

Product datasheet for **RC207981**

COG6 (NM_020751) Human Tagged ORF Clone

Product data:

Product Type:	Expression Plasmids
Product Name:	COG6 (NM_020751) Human Tagged ORF Clone
Tag:	Myc-DDK
Symbol:	COG6
Synonyms:	CDG2L; COD2; SHNS
Mammalian Cell Selection:	Neomycin
Vector:	pCMV6-Entry (PS100001)
E. coli Selection:	Kanamycin (25 ug/mL)



[View online »](#)

ORF Nucleotide
Sequence:

>RC207981 ORF sequence

Red=Cloning site Blue=ORF Green=Tags(s)

TTTTGTAATACGACTCACTATAGGGCGGCCGGGAATTCGTCGACTGGATCCGGTACCGAGGAGATCTGCC
GCCGCGATCGCCATGGCAGAGGGCAGCGGGGAAGTGGTGCAGTGTCTGCGACCGGGGTGCCAACGCCTCAACAATGGGG
CAGGCGGGACCTCGGCGACGACCTGCAACCCGCTGTCGCGCAAGCTGCATAAGATCCTGGAGACGCGGCT
GGACAACGACAAGGAGATGTTAGAAGCTCTCAAGGCACCTTTCAACCTTTTTTTGTTGAAAATAGTCTGCGG
ACTCGAAGAAATTTACGTGGAGATATTGAACGTAAAAGTTAGCCATCAATGAAGAATTTGTAAGCATT
TCAAGGAAGTGAAGGAGGAAGTGAAGCATAGCGAAGATGTTCAAGCAATGAGCAACTGTTGTCAAGA
TATGACAAGTGCCTACAGGCAGCAAAGGAACAGACTCAAGATTTAATAGTAAAAACCACTAAGCTTCAA
TCTGAAAGCCAAAAATTAGAGATAAGAGCTCAAGTTGCAGATGCCTTCTTATCCAAGTTCCAAGTCACT
CTGATGAAATGAGTCTTCTCCGAGGTACAAGAGAAGGACCCATTACTGAGGATTTTTTCAAGGCACTGGG
AAGAGTAAAACAGATTCATAATGATGTCAAAGTCTCTTTCGCTACAAATCAACAAACGGCAGGTTTAGAA
ATTATGGAACAGATGGCCTTACTTCAAGAAACGGCTTATGAAAGACTTTACCGATGGGCTCAAAGTGAAT
GCAGAACATTGACACAAGAATCATGTGACGTATCTCCGGTATTGACACAGGCAATGGAAGCCCTGCAGGA
CAGACCTGCTTATATAAATATACCTTAGATGAATTTGGAACAGCCAGAAGAAGTACAGTTGTTCTGTTGGA
TTTATTGATGCGCTCACAAAGAGGGGGCCCGGAGGTACACCTAGACCAATTGAAATGCATTCTCATGACC
CTTTGAGGTATGTAGGAGATATGTTGGCTGGCTCCATCAAGCTACTGCTTCTGAAAAGGAACACCTTGA
AGCTCTCTAAAGCATGTAACACAAAGGTGTTGAAGAAAATATTCAAGAAGTTGTTGGGCATATCACT
GAAGGTGTGTGCAGGCCCTAAAGGTTGCAATTGAGCAAGTAATAGTTGCTGAACCTGGGGCAGTTTTAT
TATATAAAATTTCTAATCTCCTCAAATTTTATCACCATAACAATCAGTGGTATTGTTGGAATAGTGCAAC
TGCATTATTGACTACCATTGAAGAAATGCATTTGCTAAGCAAAAAAATATTCTTCAATAGCTTGAGTCTT
CATGCAAGTAAATTAATGGACAAGGTTGAACTCCACCCACTGATCTTGACCAAGTTCTGCACTAAATC
AGACACTCATGTTGCTGCGTGAAGTTTTAGCATCTCACGATTCTTCAGTTGTACCATTAGATGCTCGTCA
AGCTGATTTTGTGAGGTTTTATCATGTGCTTGGATCCTCTCTACAGATGTGTACTGTATCAGCCAGC
AATTTAGGCACAGCTGACATGGCCACTTTCATGGTCAATTCATATATGATGAAGACAACATTAGCTC
TATTTGAATTCAGTACAGAGCTCTGGAATGCTACAGTTTCAGATCGAAGCACATTTGGACACACTTAT
AAATGAGCAAGCCTTTATGTTTTAACTAGGGTAGGCTTGAGTTACATCTATAACTGTACAGCAACAT
AAACCTGAACAGGCTCTTTAGCTAATATGCCCAACCTAGATTCTGTGACTGAAGGCTGCAATGGTTC
AGTTTGATCGTTATCTGTGAGCCCGAGACAACCTATTGATACCACAGCTGAACCTTCTTCTAAGTGCCAC
AGTGAAAGAGCAGATCGTAAAACAATCTACAGAATTAGTCTGCAGAGCCTATGGTGAAGGTATGACGCC
GTGATGAATCCAATCAATGAATACAAAGATCCAGAGAACATTCTTACCAGATCGCCCGAGCAAGTGCAGA
CGCTTCTTTCCACGCGTACGCGGCCGCTCGAGCAGAACTCATCTCAGAAGAGGATCTGGCAGCAATGATATCCTGGATT
ACAAGGATGACGACGATAAGGTTTAA

Reconstitution Method:

1. Centrifuge at 5,000xg for 5min.
2. Carefully open the tube and add 100ul of sterile water to dissolve the DNA.
3. Close the tube and incubate for 10 minutes at room temperature.
4. Briefly vortex the tube and then do a quick spin (less than 5000xg) to concentrate the liquid at the bottom.
5. Store the suspended plasmid at -20°C. The DNA is stable for at least one year from date of shipping when stored at -20°C.

RefSeq: [NM_020751.1](#), [NP_065802.1](#)

RefSeq Size: 3627 bp

RefSeq ORF: 1974 bp

Locus ID: 57511

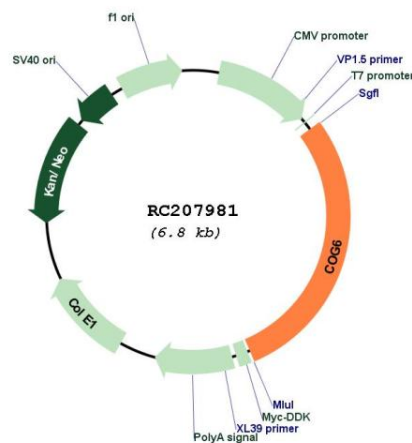
UniProt ID: [Q9Y2V7](#)

Cytogenetics: 13q14.11

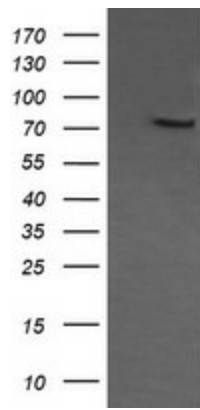
MW: 73.3 kDa

Gene Summary: This gene encodes a subunit of the conserved oligomeric Golgi complex that is required for maintaining normal structure and activity of the Golgi apparatus. The encoded protein is organized with conserved oligomeric Golgi complex components 5, 7 and 8 into a sub-complex referred to as lobe B. Alternative splicing results in multiple transcript variants. [provided by RefSeq, Feb 2009]

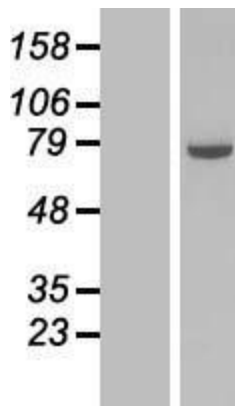
Product images:



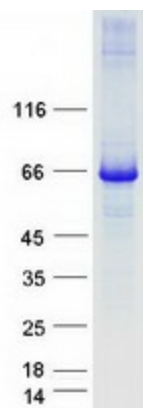
Circular map for RC207981



HEK293T cells were transfected with the pCMV6-ENTRY control (Cat# [PS100001], Left lane) or pCMV6-ENTRY COG6 (Cat# RC207981, Right lane) cDNA for 48 hrs and lysed. Equivalent amounts of cell lysates (5 ug per lane) were separated by SDS-PAGE and immunoblotted with anti-COG6 (Cat# [TA505418]). Positive lysates [LY412375] (100ug) and [LC412375] (20ug) can be purchased separately from OriGene.



Western blot validation of overexpression lysate (Cat# [LY412375]) using anti-DDK antibody (Cat# [TA50011-100]). Left: Cell lysates from untransfected HEK293T cells; Right: Cell lysates from HEK293T cells transfected with RC207981 using transfection reagent MegaTran 2.0 (Cat# [TT210002]).



Coomassie blue staining of purified COG6 protein (Cat# [TP307981]). The protein was produced from HEK293T cells transfected with COG6 cDNA clone (Cat# RC207981) using MegaTran 2.0 (Cat# [TT210002]).