

Product datasheet for RC207980

TBC1D1 (NM_015173) Human Tagged ORF Clone

Product data:

Product Type:	Expression Plasmids
Product Name:	TBC1D1 (NM_015173) Human Tagged ORF Clone
Tag:	Myc-DDK
Symbol:	TBC1D1
Synonyms:	TBC; TBC1
Mammalian Cell Selection:	Neomycin
Vector:	pCMV6-Entry (PS100001)
E. coli Selection:	Kanamycin (25 ug/mL)
ORF Nucleotide Sequence:	>RC207980 ORF sequence Red=Cloning site Blue=ORF Green=Tags(s)

TTTTGTAATACGACTCACTATAGGGCGGCCGGAATTCGTCGACTGGATCCGGTACCGAGGAGATCTGCC
GCC**CGATCGCC**

ATGGAACCAATAACATTCACAGCAAGGAAACATCTGCTTTCTAACGAGGTCTCGGTGGATTTGGCCTGC
AGCTGGTGGGCTCCCTGCCTGTGCATTCCTGACCACCATGCCCATGCTGCCCTGGGTTGTGGCTGAGGT
GCGAAGACTCAGCAGGCAGTCCACCAGAAAGAACCTGTAACCAAGCAAGTCCGGCTTTGCGTTTCACCC
TCTGGACTGAGATGTGAACCTGAGCCAGGGAGAAGTCAACAGTGGGATCCCTGATCTATTCCAGCATCT
TTGAGTGAAGCCTCAGCGTGTTCACAACTGATTCACAACAGTCATGACCCAAGTTACTTTGCTTGTCT
GATTAAGGAAGACGCTGTCCACCGCAGAGTATCTGCTATGTGTTCAAAGCCGATGATCAAACAAAAGTG
CCTGAGATCATCAGCTCCATCCGTCAGGCGGGGAAGATCGCCCGCAGGAGGAGCTGCACTGCCCGTCCG
AGTTTCAGCAGACGTTTTCCAAGAAGTTCGAGGTGCTCTTCTGCGGCCGCGTGACGGTGGCGCACAAAGAA
GGCTCCGCGGCCCTGATCGACGAGTGCATCGAGAAGTTCAATCACGTACGCGGCAGCCGGGGTCCGAG
AGCCCCGCCCAACCCGCCCATGCCGCGCCACAGGGAGCCAGGAGCCTGTGCCAGGCCCATGCGCA
AGTCTTCTCCAGCCCGCCTGCGCTCGCTGGCTTTAGGAAGGAGCTGCAGGATGGGGCCTCCGAAG
CAGCGGCTTCTCAGCTCCTTCGAGGAGAGCGACATTGAGAACCCTCATTAGCGGACACAATATTGTG
CAGCCCACAGATATCGAGGAAAATCGAACTATGCTCTTACGATTGGCCAGTCTGAAGTTTACCTCATCA
GTCTGACACCAAAAAATAGCATTGGAGAAAAATTTAAGGAGATATCCTTTTGCTCTCAGGGCATCAG
ACACGTGGACCACTTTGGTTTTATCTGTGCGGAGTCTTCCGAGGTGGCGGCTTTCAATTTGTCTGTTAC
GTGTTTTCAGTGCACAAATGAGGCTCTGGTTGATGAAATTATGATGACCCTGAAACAGGCCTTACGGTGG
CCGCAGTGCAGCAGACAGCTAAGGCGCCAGCCAGCTGTGTGAGGGCTGCCCCCTGCAAAGCCTGCACAA
GCTCTGTGAGAGGATAGAGGGAATGAATCTTCCAAAACAAAACCTAGAACTGCAAAGCACCTGACGACA
TTAACAAATCAGGAGCAGGCGACTATTTTTGAAGAGGTTTCAGAAATTGAGACCGAGAAATGAGCAGCGAG
AGAATGAATTGATTATTTCTTTTCTGAGATGTTTATATGAAGAGAAACAGAAAGAACACATCCATATTGG
GGAGATGAAGCAGACATCGCAGATGGCAGCAGAGAATATTGGAAGTGAATTACCACCCAGTGCCACTCGA



TTTAGGCTAGATATGCTGAAAAACAAAGCAAAGAGATCTTTAACAGAGTCTTTAGAAAGTATTTTGTCCC
GGGTAATAAAGCCAGAGGCCTGCAGGAACACTCCATCAGTGTGGATCTGGATAGCTCCCTGTCTAGTAC
ATTAAGTAACACCAGCAAAGAGCCATCTGTGTGTGAAAAGGAGGCCTTGCCCATCTCGAGAGCTCCTTT
AAGCTCCTCGGCTCCTCGGAGGACCTGTCCAGTGAAGTCCGAGAGTCACTCCCAGAAGAGCCAGCTCCGC
TGTCGCCCCAGCAGGCCTTCAGGAGGCGAGCAAACACCCTGAGTCACTTCCCATCGAATGCCAGGAACC
TCCACAACCTGCCCGGGGTCCCCGGGGTTCGCAAAGGAACTTATGAGGTATCACTCAGTGAACACA
GAGAGCCTCATGAACGAAAGGACTTTGAATCCAAAGCAAACCATCTTGGTGATTCTGGTGGGACTCCTG
TGAAAGCCCGGAGGCATTCTGGAGGCAGCAGATATTCTCCGAGTAGCCACCCCGAGAAGGCGTGCGA
TTCTTCCAGCAGATATGAAGATTATTCAGAGCTGGGAGAGCTTCCCCACGATCTCCTTTAGAACCAGTT
TGTGAAGATGGGCCCTTTGGCCCCCACCAGAGGAAAAGAAAAGGACATCTCGTGAAGCTCCGAGAGCTGT
GGCAAAGGCTATTCTTAAACAGATACTGCTGCTTAGAATGGAGAAGGAAAATCAGAAGCTCCAAGCCTC
TGAAAATGATTTGCTGAACAAGCGCCTGAAGCTCGATTATGAAGAAATTAAGTTTGACATGGAAAAATGC
ACTACAGTGTGGAAAAGATGCTTAGCACTCCAGGAAGATCAAAAATTAAGTTTGACATGGAAAAATGC
ACTCGGCTGTTGGCAAGGTGTGCCACGTATCACCGAGGTGAAATCTGGAATTTCTAGCTGAGCAATT
CCACCTTAAACACCAGTTTCCCAGCAAACAGCAGCCAAAGGATGTCCATACAAAGAAGCTTTAAAGCAG
CTGACTTCCCAGCAGCATGCGATTCTTATTGACCTTGGGCGAACCTTCTACACACCCATACTTCTCTG
CCCAGCTTGGAGCAGGACAGCTATCGCTTTACAACATTTTGAAGGCCTACTCACTTCTAGACCAGGAAGT
GGGATATTGCCAAGGTCTCAGCTTTGTAGCAGGCATTTTGTCTTTCATATGAGTGAAGGAAAGGCGGTTT
AAAATGCTCAAGTTTCTGATGTTTGACATGGGGCTGCGGAAACAGTATCGGCCAGACATGATTATTTTAC
AGATCCAGATGTACCAGCTCTCGAGGTTGCTTCATGATTACCACAGAGACCTCTACAATCACCTGGAGGA
GCACGAGATCGGCCCCAGCCTCTACGCTGCCCCCTGGTTCCTCACCATGTTTGCCTCACAGTTCCCGCTG
GGATTCTAGCCAGAGTCTTTGATATGATTTTCTTTCAGGGAACAGAGGTCAATTTAAAGTGGCTTTAA
GTCTGTTGGGAAGCCATAAGCCCTTGATTCTGCAGCATGAAAACCTAGAAACCATAGTTGACTTTATAAA
AAGCACGCTACCCAACCTTGGCTTGGTACAGATGGAAAAGACCATCAATCAGGTATTTGAAATGGACATC
GCTAAACAGTTACAAGCTTATGAAGTTGAGTACCACGTCCTTCAAGAAGAACTTATCGATTCTCTCCTC
TCAGTGACAACCAAGAATGGATAAATTAGAGAAAACCAACAGCAGCTTACGCAAACAGAACCTTGACCT
CCTTGAACAGTTGCAGGTGGCAAATGGTAGGATCCAAAGCCTTGAGGCCACCATTGAGAAGCTCCTGAGC
AGTGAGAGCAAGCTGAAGCAGGCCATGCTTACCTTAGAACTGGAGCGGTGGCCCTGCTGCAGACGGTGG
AGGAGCTGCGGCGGAGCGCAGAGCCCAGCGACCGGGAGCCTGAGTGCACGCAGCCCGAGCCACGGG
CGAC

ACGCGTACGCGGCCGCTCGAGCAGAAACTCATCTCAGAAGAGGATCTGGCAGCAAATGATATCCTGGATT
ACAAGGATGACGACGATAAGGTTTAA

Protein Sequence: >RC207980 protein sequence
 Red=Cloning site Green=Tags(s)

```
MEPITFTARKHLLSNEVSVDFGLQLVGLSPVHSLTTPMPLPWVVAEVRRLSRQSTRKEPVTKQVRLCVSP
SGLRCEPEPGRSQQWDPLIYSSIFECKPQRVHKL IHNSHDPSYFACLIKEDAVHRQSI CYVFKADDQTKV
PEI ISSIRQAGKIARQEELHCPSEFDDTF SKKFEVLFCGRVTVAHKKAPPAL IDECIEKFNHVS GSRGSE
SPRPNPPHAAPTGSQEPVRRPMPKSF SQPGLRSLAFRKELQDGG LRSSGFFSSFEESDIENHLISGHNIV
QPTDIEENRTMLFTIGQSEVYLISPDTKKIALEKNFKEISFCSQGI RHVDHFGFICRESSGGGFHFVCY
VFQCTNEALVDEIMMTLKQAF TVAAVQQTAKAPAQLCEGCPLQSLHKL CERIEGMNSSKTKLELQKHLTT
LTNQEQATIFEEVQKL RPRNEQRENELIISFLRCLYEEKQKEHIHIGEMKQTSQMAAENIGSELPPSATR
FRLDMLKNKAKRSLTESLESILSRGNKARGLQEHSISVDLDSSL SSSLNTSKEPSVCEKEALPISESSF
KLLGSSEDLSSDSESHLPEEPAPLSPQQAFRRRANTLSHFPIECQEPQPARGSPGVSQRKLMRYHSVST
ETPHERKDFESKANHLGDSGGTPVKTRRHSWRQQIFLRVATPQKACDSSSR YEDYSELGELPPRSPLEPV
CEDGPFPPPEEKRTSRELRELWQKAILKQILLRMEKENQKLQASENDLLNKRLKLDYEEITPCLKEV
TTVWEKMLSTPGRSKIKFDMEKMSAVGQGVPRHHRGEIWKFLAEQFHLKHQFP SKQQPKDVPYKELLKQ
LTSQQHAILIDLGRTPFTHPYFSAQLGAGQLSLYNILKAYSLLDQEVGYCQGLSFVAGILL LHMSEEEAF
KMLKFLMDFMGLRKQYRPDMIILQIQMYQLSRLLDHYHRDLYNHLEEHEIGPSL YAAPWFLTMFASQFPL
GFVARVFDMI FLQGTEVIFKVALSLLGSHKPLILQHENLETIVDFIKSTLPNLGLVQMEKTINQVFEMDI
AKQLQAYEVEYHVLQEELIDSSPLSDNQ RMDKLEKTNSSLRKQNLDLLEQLQVANGRIQSLEATIEKLLS
SESKLKQAML TLELERSALLQTVEELRRRSAEPSDREPECTQPEPTGD
```

TRTRPLEQKLISEEDLAANDILDYKDDDDKV

Chromatograms: https://cdn.origene.com/chromatograms/mk6262_c07.zip

Restriction Sites: SgfI-MluI

Cloning Scheme:



ACCN: NM_015173

ORF Size: 3504 bp

OTI Disclaimer: Due to the inherent nature of this plasmid, standard methods to replicate additional amounts of DNA in E. coli are highly likely to result in mutations and/or rearrangements. Therefore, OriGene does not guarantee the capability to replicate this plasmid DNA. Additional amounts of DNA can be purchased from OriGene with batch-specific, full-sequence verification at a reduced cost. Please contact our customer care team at custsupport@origene.com or by calling 301.340.3188 option 3 for pricing and delivery.

The molecular sequence of this clone aligns with the gene accession number as a point of reference only. However, individual transcript sequences of the same gene can differ through naturally occurring variations (e.g. polymorphisms), each with its own valid existence. This clone is substantially in agreement with the reference, but a complete review of all prevailing variants is recommended prior to use. [More info](#)

OTI Annotation: This clone was engineered to express the complete ORF with an expression tag. Expression varies depending on the nature of the gene.

Components: The ORF clone is ion-exchange column purified and shipped in a 2D barcoded Matrix tube containing 10ug of transfection-ready, dried plasmid DNA (reconstitute with 100 ul of water).

Reconstitution Method:

1. Centrifuge at 5,000xg for 5min.
2. Carefully open the tube and add 100ul of sterile water to dissolve the DNA.
3. Close the tube and incubate for 10 minutes at room temperature.
4. Briefly vortex the tube and then do a quick spin (less than 5000xg) to concentrate the liquid at the bottom.
5. Store the suspended plasmid at -20°C. The DNA is stable for at least one year from date of shipping when stored at -20°C.

Note: Plasmids are not sterile. For experiments where strict sterility is required, filtration with 0.22um filter is required.

RefSeq: [NM_015173.4](#)

RefSeq Size: 5705 bp

RefSeq ORF: 3507 bp

Locus ID: 23216

UniProt ID: [Q86TI0](#)

Cytogenetics: 4p14

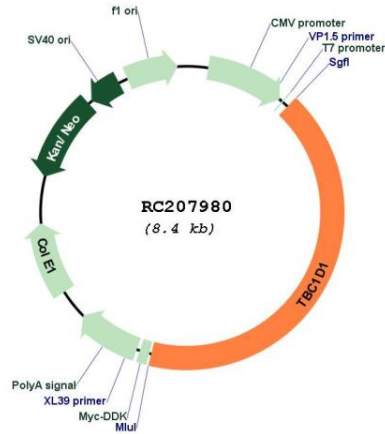
Domains: TBC

Protein Families: Druggable Genome

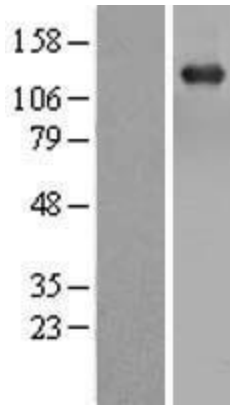
MW: 133.1 kDa

Gene Summary: TBC1D1 is the founding member of a family of proteins sharing a 180- to 200-amino acid TBC domain presumed to have a role in regulating cell growth and differentiation. These proteins share significant homology with TRE2 (USP6; MIM 604334), yeast Bub2, and CDC16 (MIM 603461) (White et al., 2000 [PubMed 10965142]).[supplied by OMIM, Mar 2008]

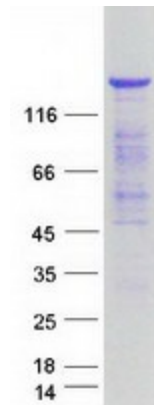
Product images:



Circular map for RC207980



Western blot validation of overexpression lysate (Cat# [LY414764]) using anti-DDK antibody (Cat# [TA50011-100]). Left: Cell lysates from untransfected HEK293T cells; Right: Cell lysates from HEK293T cells transfected with RC207980 using transfection reagent MegaTran 2.0 (Cat# [TT210002]).



Coomassie blue staining of purified TBC1D1 protein (Cat# [TP307980]). The protein was produced from HEK293T cells transfected with TBC1D1 cDNA clone (Cat# RC207980) using MegaTran 2.0 (Cat# [TT210002]).