

## Product datasheet for RC207979

### RNF149 (NM\_173647) Human Tagged ORF Clone

#### Product data:

Product Type:	Expression Plasmids
Product Name:	RNF149 (NM_173647) Human Tagged ORF Clone
Tag:	Myc-DDK
Symbol:	RNF149
Synonyms:	DNAPTP2
Mammalian Cell Selection:	Neomycin
Vector:	pCMV6-Entry (PS100001)
E. coli Selection:	Kanamycin (25 ug/mL)
ORF Nucleotide Sequence:	>RC207979 representing NM_173647 Red=Cloning site Blue=ORF Green=Tags(s)

TTTTGTAATACGACTCACTATAGGGCGGCCGGAATTCGTCGACTGGATCCGGTACCGAGGAGATCTGCC  
GCC**CGATCGCC**

ATGGCGTGGCGGGCGCGCAAGCCAGCGTCGGGGCTCGCGCGTGTGGCTCTGGCGTTGCTCGCCCTGG  
CCCTGTGCGTGCCCGGGCCCGGGCCGGGCTCTCGAGTGGTTCTCGGCCGTGGTAAACATCGAGTACGT  
GGACCCGACAGCAACCTGACGGTGTGGAGCGTCTCGGAGAGTGGCCGCTTCGGCGACAGCTCGCCCAAG  
GAGGGCGCGCATGGCCTGGTGGCGTCCCGTGGGCGCCCGCGGAGACCTCGAGGGCTGCGCGCCCGACA  
CGCGCTTCTTCGTGCCGAGCCGGCGCGGAGGGCCGCGCCCTGGGTGCCCTGGTGGCTCGTGGGG  
CTGCACCTTCAAGGACAAGGTGCTGGTGGCGCGCGGAGGAACGCCTCGGCCGTCGTCCTTACAATGAG  
GAGCGCTACGGGAACATCACCTTGCCATGTCTCACGCGGAACAGGAAATATAGTGGTCATTATGATTA  
GCTATCCAAAAGGAAGAGAAATTTGGAGCTGGTGCAAAAAGGAATTCAGTAACGATGACCATAGGGGT  
TGGCACCCGGCATGTACAGGAGTTCATCAGCGTCAGTCTGTGGTGTGGTGGCCATTGCCTTATCACC  
ATGATGATTATCTCGTTAGCCTGGCTAATTTTACTATATACAGCGTTTCTATATACTGGCTCTCAGA  
TTGGAAGTCAGAGCCATAGAAAAGAACTAAGAAAGTTATTGGCCAGCTTCTACTTCATACTGTAAGCA  
TGGAGAAAAGGAATTGATGTTGATGCTGAAAATTGTGCAGTGTGATTGAAAATTTCAAAGTAAAGGAT  
ATTATTAGAATTCTGCCATGCAAGCATATTTTTCATAGAATATGCATTGACCCATGGCTTTTGGATCACC  
GAACATGTCCAATGTGTAACCTTGATGTATCAAAAGCCCTAGGATATTGGGGAGAGCCTGGGGATGTACA  
GGAGATGCCTGTCCAGAACTCTCCTCCTGGAAGGATCCAGCTGCAAATTTGAGTCTAGCTTTACCAGAT  
GATGACGGAAGTATGAGAGCAGTCCACCATCAGCCTCCCTGCTGAATCTGAGCCACAGTGTATCCCA  
GCTTTAAAGGAGATGCAGGAGAAAATACGCATTGCTAGAAGCCGGCAGGAGTACTCTCGCATGGAGG  
ACCCATCTCC

**ACGCGT**ACGCGGCCGCTCGAGCAGAACTCATCTCAGAAGAGGATCTGGCAGCAAATGATATCTGGATT  
ACAAGGATGACGACGATAAGGTTTAA



[View online >](#)

**Protein Sequence:** >RC207979 representing NM\_173647  
Red=Cloning site Green=Tags(s)

MAWRRREASVGARGVLALALLALALCVPGARGRALEWFSAVVNIEYVDPQTNLTVWSVSESGRFGDSSPK  
 EGAHGLVGVPWAPGGDLEGCAPDTRFFVPEPGGGAAPWVALVARGGCTFKDKVLAARRNASAVVLYNE  
 ERYGNITLPMSSHAGTGNIVVIMISYPKGREILELVQKGIPTMTIGVGRHVQEFISGQSVFVAIAFIT  
 MMIISLAWLIFYIQRFLYTGSQIGSQSHRKETKKVIGQLLLHTVKHGEKGIDVDAENCAVCIENFKVKD  
 IIRILPCKHIFHRICIDPWLLDHRTPMCKLDVIKALGYWGEKQEMPAPEPPGRDPAANLSLALPD  
 DDGSESSPPSASPASEPQCDPSFKGDAGENTALLEAGRSDSRHGGPIS

TRTRPLEQKLISEEDLAANDILDYKDDDDKV

**Chromatograms:** [https://cdn.origene.com/chromatograms/mg2889\\_e08.zip](https://cdn.origene.com/chromatograms/mg2889_e08.zip)

**Restriction Sites:** SgfI-MluI

**Cloning Scheme:**



\* The last codon before the Stop codon of the ORF

**ACCN:** NM\_173647

**ORF Size:** 1200 bp

**OTI Disclaimer:** The molecular sequence of this clone aligns with the gene accession number as a point of reference only. However, individual transcript sequences of the same gene can differ through naturally occurring variations (e.g. polymorphisms), each with its own valid existence. This clone is substantially in agreement with the reference, but a complete review of all prevailing variants is recommended prior to use. [More info](#)

**OTI Annotation:** This clone was engineered to express the complete ORF with an expression tag. Expression varies depending on the nature of the gene.

**Components:** The ORF clone is ion-exchange column purified and shipped in a 2D barcoded Matrix tube containing 10ug of transfection-ready, dried plasmid DNA (reconstitute with 100 ul of water).

**Reconstitution Method:**

1. Centrifuge at 5,000xg for 5min.
2. Carefully open the tube and add 100ul of sterile water to dissolve the DNA.
3. Close the tube and incubate for 10 minutes at room temperature.
4. Briefly vortex the tube and then do a quick spin (less than 5000xg) to concentrate the liquid at the bottom.
5. Store the suspended plasmid at -20°C. The DNA is stable for at least one year from date of shipping when stored at -20°C.

**Note:** Plasmids are not sterile. For experiments where strict sterility is required, filtration with 0.22um filter is required.

**RefSeq:** [NM\\_173647.2](#), [NP\\_775918.1](#)

**RefSeq Size:** 2452 bp

**RefSeq ORF:** 1203 bp

**Locus ID:** 284996

**UniProt ID:** [Q8NC42](#)

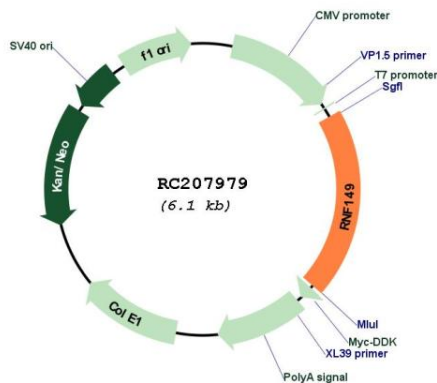
**Cytogenetics:** 2q11.2

**Protein Families:** Druggable Genome, Transmembrane

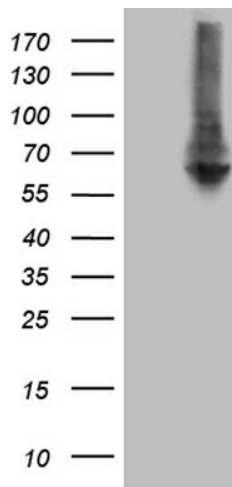
**MW:** 43 kDa

**Gene Summary:** E3 ubiquitin-protein ligase. Ubiquitinates BRAF, inducing its proteasomal degradation. [UniProtKB/Swiss-Prot Function]

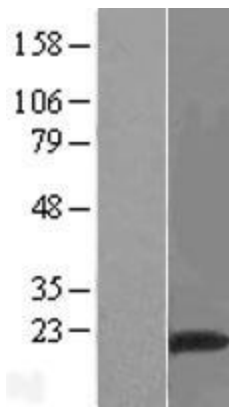
**Product images:**



Circular map for RC207979



HEK293T cells were transfected with the pCMV6-ENTRY control (Cat# [PS100001], Left lane) or pCMV6-ENTRY RNF149 (Cat# RC207979, Right lane) cDNA for 48 hrs and lysed. Equivalent amounts of cell lysates (5 ug per lane) were separated by SDS-PAGE and immunoblotted with anti-RNF149 (Cat# [TA810509])(1:2000). Positive lysates [LY406531] (100ug) and [LC406531] (20ug) can be purchased separately from OriGene.



Western blot validation of overexpression lysate (Cat# [LY406531]) using anti-DDK antibody (Cat# [TA50011-100]). Left: Cell lysates from untransfected HEK293T cells; Right: Cell lysates from HEK293T cells transfected with RC207979 using transfection reagent MegaTran 2.0 (Cat# [TT210002]).