

Product datasheet for **RC207976**

Solo (SESTD1) (NM_178123) Human Tagged ORF Clone

Product data:

Product Type:	Expression Plasmids
Product Name:	Solo (SESTD1) (NM_178123) Human Tagged ORF Clone
Tag:	Myc-DDK
Symbol:	Solo
Synonyms:	SOLO
Mammalian Cell Selection:	Neomycin
Vector:	pCMV6-Entry (PS100001)
E. coli Selection:	Kanamycin (25 ug/mL)



[View online »](#)

ORF Nucleotide
Sequence:

>RC207976 ORF sequence

Red=Cloning site Blue=ORF Green=Tags(s)

TTTTGTAATACGACTCACTATAGGGCGGCCGGAATTCGTCGACTGGATCCGGTACCGAGGAGATCTGCC
GCCGCGATCGCCATGGAGGCCTCAGTAATATTACCCATTCTGAAGAAAAAAGTAGCCTTCTTTTCAGGAGGAAAGGACAGAC
GGAGTGGCCTCATTTTGACAATTCATTATGCCTCGAACAGACAAATATGGATGAGCTGAGTGTCACCTT
AGACTTCTACTCAGCATTCCAAGTGAGAAGTGTAAAGGCTAGAGGATTTACCGTGATTGTGGATGGCAGA
AAATCACAGTGGAAATGTGGTGAAGACAGTAGTCGTAATGTACAGAATGTTGTTCCAGCTGAGGTGCC
TTGTTTGTGGTAAAGCCAGATGAATTCTGGGATAAGAAAGTAACGCATTTTTGTTTTTGAAGGAGAA
GGATAGACTTGGCTTTGAGGTTATTTAGTGTCCGCCAACAAATTGACTCGTTATATAGAACCATGCCAA
TTAACAGAAGATTTGGTGGGAGTCTCACATGATCACATGGACTGGTTAAATAAGAGGCTGGTTTTTG
AGAAGTTTACAAAGGAATCTACATCATTATTAGATGAAGTGGCTTTGATTAACAATGGAAGTGATAAAGG
AAATCAGCAAGAGAAAGAAAGGTCTGTGGATTTAACTTTCTCCATCGTTGATCCTGAAACAGTTCCT
CAGACAGGCATGAATTGTTGTCCGAATTACAGCAGCGTCGATTTAATGGCTCAGACGGAGGGTTTCAT
GGTCTCCTATGGATGATGAACTTCTGCACAGCCACAGGTTATGAAATTATTAGATTCACCTCCGAGAGCA
ATATACCCGCTACCAGGAAGTTGTAGGCAACGTAGCAAGCGCACACAGTTAGAAGAGATTAACAGAAAG
GTAATGCAGGTGGTGAAGTGGCTAGAAGGGCCTGGATCAGAACTAAGAGCCAGTGGGGCATTGGAG
ACTCCATTAGGGCCTCCCAGGCCCTACAGCAGAAACACGAAGAGATTGAGAGCCAGCACAGTGAATGGTT
TGCAGTGTATGTGGAACCTAATCAGCAAATGCAGCACTTGAATGCTGGCGATGAGGAAGATCTGTG
GAACTAAAGTCACTGCAGCAACAATAGTGTGTTGTTATCGACAGGCCAGTCAGCTGGAATTTAGGC
AAAATCTTACAAGCAGCTCTTGAATTTCAATGGTGTGGCCCAAGATTTGTCTCAGCAGTTGGATGGCTT
ATTAGGGATGTTGTGCGTAGATGTAGCACCAGCTGATGGAGCATCGATTACGAAACTTTAAACTGCTT
GAAGAGAAGCTGAAAAGTGTGATGTGGGATTGCAAGTTTTCGTGAAAAAGGTCAAGGTCTCCTGGATC
AGATCTCCAATCAGGCATCCTGGCCTATGAAAAGGATGTAACCATTGAAAATAAGAAAATGTGGACCA
CATACAAGGAGTATGGAAGATATGCAGCTTAGAAAACAAAGATGTGAAGACATGGTAGATGTGCGAAGG
TTAAAGATGCTTCAGATGGTGCAGTTGTTAAATGTGAAGAAGATGCTGCCAGGCAGTAGAATGGCTAA
GTGAACTTCTGGATGCTCTGCTTAAGACTCACATCAGATTGGGCGATGATGCTCAAGAAACGAAAGTTT
GCTGGAAAAGCATAGAAAATTTGTTGATGTTGCACAGAGCACTTATGACTATGGCAGGCAGTTGCTACAG
GCCACAGTTGTGTTATGCCAATCTTTGCGTGCCTTCTCGGTCTCTGGGATACACTTCTCGACTGA
ACAGAGTATGAAAACAATTTACAATAGCATCTGAAGAGAGAGTACATAGATTGAAAATGGCTATTGCATT
TCACTCAAATGCTGAAAAGATTTTGCAGGACTGTCCAGAAGAGCCTGAAGCTATTAATGATGAGGAGCAA
TTTGATGAAAATGAAGCAGTTGGGAAATCACTTTTGGATAGATTAAGTGTCCAGTAGTTTATCCTGATG
GAACCGAACAAATTTTTGGGAGTCCAAGTGACATGGCTTCTACTGCAGAAAACATCAGAGACAGGATGAA
ACTAGTTAATCTCAAAGGCAGCAGCTGAGACATCCTGAAATGGTGACCACAGAGAGCACGCGTACGCGGCCGCTCGAGCAGAACTCATCTCAGAAGAGGATCTGGCAGCAATGATATCCTGGATT
ACAAGGATGACGACGATAAGGTTTAA

Protein Sequence: >RC207976 protein sequence
 Red=Cloning site Green=Tags(s)

MEASVILPILKKKLAFSGGKDRRSLILTIPLCLEQTNMDELSVTLDFLLSIPSEKCKARGFTVIDGR
 KSQWNVVKTVVVMLQNVVPAEVS LVCVVKPDEFWDKVKVTHFCFWKEKDRLGFEVILV SANKLTRYIEPCQ
 LTEDFGGSLTYDHMDWLNKRLVFEKFTKESTSLDELALINNGSDKGNQEQEKERSVDLNF LPSVDPETVL
 QTGHELLSELQRRFNGSDGGVSWSPMDEL LAQPQVMKLLDSLREQYTRYQEVCQRQRSKRTQLEEIQQK
 VMQVNVWLEGPGEQLRAQWIGDSIRASQALQQKHEEIESQHSEWFAYVELNQIAALLNAGDEEDLV
 ELKSLQQQLSDVCYRQASQLEFRQNLLQAALFHVGAQDLSQQLDGLLGMLCVDVAPADGASIQQLKLL
 EEKLSVDVGLQGLREKQGLLDQISNQASWAYGKDV TIENKENVDHIQGV MEDMQLRKQRCEDMVDVRR
 LKMLQMVQLFKCEEDAAQAVEWLS ELLDALLKTHIRLGDDAQETKVLLEKHKRFVDVAQSTYDYGRLLQ
 ATVVLQSLRCTSRSSGDTLPRLNRVWKQFTIASEERVHREMAIAFHSNAEKILQDCPEEPEAINDEEQ
 FDEIEAVGKSLDLRLTVPVVYPDGEQYFGSPSDMAST AENIRDRMKLVNLKRQQLRHPPEMVTTES

TRTRPLEQKLI SEEDLAANDILDYKDDDDKV

Chromatograms: https://cdn.origene.com/chromatograms/mk6513_f10.zip

Restriction Sites: SgfI-MluI

Cloning Scheme:



ACCN: NM_178123

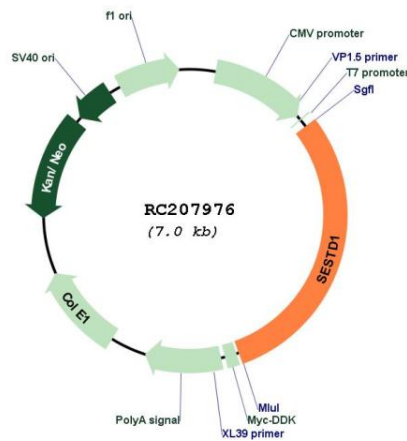
ORF Size: 2088 bp

OTI Disclaimer: The molecular sequence of this clone aligns with the gene accession number as a point of reference only. However, individual transcript sequences of the same gene can differ through naturally occurring variations (e.g. polymorphisms), each with its own valid existence. This clone is substantially in agreement with the reference, but a complete review of all prevailing variants is recommended prior to use. [More info](#)

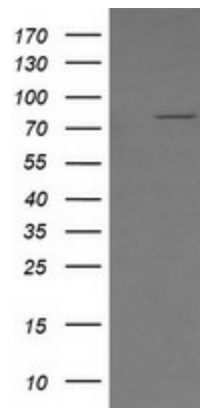
OTI Annotation: This clone was engineered to express the complete ORF with an expression tag. Expression varies depending on the nature of the gene.

Components:	The ORF clone is ion-exchange column purified and shipped in a 2D barcoded Matrix tube containing 10ug of transfection-ready, dried plasmid DNA (reconstitute with 100 ul of water).
Reconstitution Method:	<ol style="list-style-type: none"> 1. Centrifuge at 5,000xg for 5min. 2. Carefully open the tube and add 100ul of sterile water to dissolve the DNA. 3. Close the tube and incubate for 10 minutes at room temperature. 4. Briefly vortex the tube and then do a quick spin (less than 5000xg) to concentrate the liquid at the bottom. 5. Store the suspended plasmid at -20°C. The DNA is stable for at least one year from date of shipping when stored at -20°C.
RefSeq:	<u>NM_178123.2</u>
RefSeq Size:	10448 bp
RefSeq ORF:	2091 bp
Locus ID:	91404
UniProt ID:	<u>Q86VW0</u>
Cytogenetics:	2q31.2
Protein Families:	Druggable Genome
MW:	79.3 kDa
Gene Summary:	May act as the primary docking protein directing membrane turnover and assembly of the transient receptor potential channels TRPC4 and TRPC5. Binds phospholipids such as phosphatidylinositol monophosphates, phosphatidylinositol diphosphates (PIP2s) and phosphatidic acid, but not less polar lipids including phosphatidylcholine, phosphatidylserine, and phosphatidylinositol. The binding to PIP2s is calcium dependent. Might be involved in the plasma membrane localization of CTNNB1.[UniProtKB/Swiss-Prot Function]

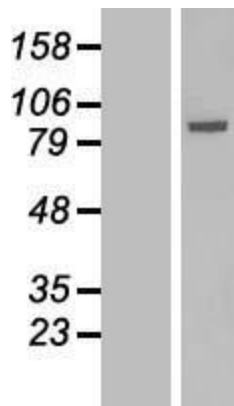
Product images:



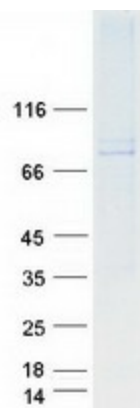
Circular map for RC207976



HEK293T cells were transfected with the pCMV6-ENTRY control (Cat# [PS100001], Left lane) or pCMV6-ENTRY SESTD1 (Cat# RC207976, Right lane) cDNA for 48 hrs and lysed. Equivalent amounts of cell lysates (5 ug per lane) were separated by SDS-PAGE and immunoblotted with anti-SESTD1 (Cat# [TA505932]). Positive lysates [LY406035] (100ug) and [LC406035] (20ug) can be purchased separately from OriGene.



Western blot validation of overexpression lysate (Cat# [LY406035]) using anti-DDK antibody (Cat# [TA50011-100]). Left: Cell lysates from untransfected HEK293T cells; Right: Cell lysates from HEK293T cells transfected with RC207976 using transfection reagent MegaTran 2.0 (Cat# [TT210002]).



Coomassie blue staining of purified SESTD1 protein (Cat# [TP307976]). The protein was produced from HEK293T cells transfected with SESTD1 cDNA clone (Cat# RC207976) using MegaTran 2.0 (Cat# [TT210002]).