

Product datasheet for **RC207975**

ZNF227 (NM_182490) Human Tagged ORF Clone

Product data:

Product Type:	Expression Plasmids
Product Name:	ZNF227 (NM_182490) Human Tagged ORF Clone
Tag:	Myc-DDK
Symbol:	ZNF227
Mammalian Cell Selection:	Neomycin
Vector:	pCMV6-Entry (PS100001)
E. coli Selection:	Kanamycin (25 ug/mL)



[View online »](#)

ORF Nucleotide Sequence:

>RC207975 representing NM_182490
 Red=Cloning site Blue=ORF Green=Tags(s)

TTTTGTAATACGACTCACTATAGGGCGGCCGGGAATTCGTCGACTGGATCCGGTACCGAGGAGATCTGCC
 GCC**CGCATCGCC**

ATGCCATCTCAGAACTATGACCTTCCCCAGAAGAAGCAGGAGAAAATGACCAAGTTTCAGGAGGCTGTGA
 CATTCAAGGATGTGGCTGTGGTCTTCTCCAGGGAGGAACCTGCGACTGCTCGATCTTACCCAGAGGAAGCT
 GTACCGAGATGTCATGGTGGAGAAGTTCAGAACTGGTTGCAAGTGGGGCATCTTCCCTTCCAACAGAT
 ATGGTATCCCAATTGGAAGCAGAAGAAAAGCTTTGGATGATGGAACAGAAACCCAAAGAAGCAGCAAGC
 ATCAAAAATAAGATGGAACACTCCAAAAATTTGCATTAATAACCTTTCAAATCAAGAGCTGCTCCTGCTG
 GCAAACTGGAACAGGTTGCAAGTGAATTAACAGGTGTCTTCAGGGGAAGAGTCCCAGTTATTACAA
 GGTGACTCTATTCAGTTTCTGAAAATGAGAACAATAAATGAACCTAAAGGAGATAGCTCTATTTATA
 TTGAAAATCAAGAGTTTCCATTTTGGAGAACCAGCATTCTTGCAGGAATACATATCTGAGTGAGTCACA
 GATTCAGAGTAGAGGTAAGCAAATTTGATGTGAAAAATAACCTGCAAATACATGAAGACTTCATGAAGAAA
 TCACCATTTTCATGAGCATATTAAACTGACACAGAACCAAAACCCCTGCAAAGGTAATGAATATGGCAAAA
 TCATTAGTGATGGCTCCAACAGAAATTACCCTTAGGAGAGAAAACCCATCCATGTGGTGAGTGTGGAAG
 GGGCTTCAGTTATAGCCCAAGGCTTCCCCTTATCCGAATGTTACACAGGAGAAAAATGCTTCAGTCAA
 AGCTCACATCTGCGAACTCATCAGAGAATTCACCCAGGAGAGAACTCAATAGATGTCATGAATCTGGTG
 ATTGCTCAATAAGAGCTCTTTTCATTCTTATCAATCTAATCATAACAGGAGAGAAGTCTTATAGATGCGA
 CAGTTGCGGCAAGGGATTAGTAGCAGCACGGGCTTATCATTACAGAACTCATACTGGAGAGAAA
 CCCTATAAATGCGAGGAATGTGGTAAATGCTTTAGTCAAAGTTCAAATTTTCAGTGCCATCAGAGAGTCC
 CACTGAAGAAAAACCATACAAAATGCGAAGAGTGTGGTAAGGGCTTCGGTTGGAGTGTAAATCTCCGTGT
 TCACCAGAGGGTCCACAGGGGTGAGAAGCCCTATAAATGTGAGGAATGTGGTAAGGGCTTCACTCAGGCT
 GCACATTTTCACATCCATCAGAGAGTCCACACTGGAGAGAAAACCTACAAGTGTGATGTGTGGTAAGG
 GCTTCAGCCACAATTCACCATAATATGCCATCGGAGAGTCCACACAGGAGAGAAGCCATAACAAGTGTGA
 GGCGTGTGGGAAAGGCTTACCCTGAATACAGATCTGCATATTTCATTTTCAGAGTTCACACGGGAGAGAAA
 CCCTATAAATGTAAGGAGTGTGGTAAGGGCTTCAGTCAGGCTTCAAATCTTCAAGTCCATCAGAATGTCC
 AACTGGGAGAAAACGATTCAAGTGTGAAACGTGTGGGAAAGGCTTCAGTCAGTCTCAAAGCTTCAAAC
 CCATCAGCGAGTCCACACTGGAGAGAAACCATATAGATGTGATGTGTGGTAAGGACTTCAGTTATAGT
 TCAAATCTTAAACTACACCAAGTAATTCACACTGGAGAAAAACCATATAAATGTGAGGAATGTGGGAAAG
 GCTTCAGTTGGAGATCAAATCTTCATGCACATCAAAGAGTTCACTCAGGAGAAAAACCCATAAATGTGA
 GCAGTGTGATAAGAGCTTCAGTCAGGCCATAGATTTTCGGGTACATCAGAGAGTCCATACTGGAGAGAAG
 CCATACAAATGTGGTGTCTGTGGTAAGGGCTTCAGTCAGTCTCTGGTCTTCAATCCCATCAGAGAGTCC
 ACACGGGGGAAAAGCCATACAAAATGTGATGTGTGTGGAAAGGCTTTAGATACAGTTTCGAGTTTATATA
 CCATCAGAGAGGCCACACTGGAGAAAAACCTTACAAAATGTGAAGAGTGTGGGAAAGGCTTTGGTAGGAGC
 TTGAATCTTCGCCATCATCAGAGGGTCCACACGGGAGAGAAAACCCATATATGTGAGGAGTGTGGTAAGG
 CCTTCAGTCTCCCTCAAATCTTCAGTCCACCTGGGTGTTACACCAGGGAAAAACTCTTTAAATGTGA
 AGAGTGTGGTAAAGGCTTCAGTCAGAGTGCACGTCTTGAAGCCATCAGAGAGTCCACACTGGAGAAAAA
 CCATACAAATGTGACATATGTGATAAGGACTTCCGTACCGTTACAGTCTTACATATCATCAGAAAGTCC
 ATACTGGTAAAAAGCTT

ACGCGTACGCGGCCGCTCGAGCAGAACTCATCTCAGAAGAGGATCTGGCAGCAAATGATATCCTGGATT
 ACAAGGATGACGACGATAAGGTTTAA

Protein Sequence: >RC207975 representing NM_182490

Red=Cloning site Green=Tags(s)

MPSQNYDLPQKKQEKMTKFQEAVTFKDVAVVFSREELRLDLTQRKLYRDVMVENFKNLVAVGHLPFQPD
MVSQLEAEEKLWMMETETQRSSKHQNKMETLQKFALKYLSNQLSCWQIWKQVASELTRCLQGKSSQLLQ
GDSIQVSEENENIMNPKGDSSIIYENQEFPPFWRTQHSCGNTYLSESQIQSRGKQIDVKNNLQIHEDFMKK
SPFHEHIKTDTEPKPCKGNEYGKIIISDGSNQKLPLGKPHPCGECGRGFSYSPRLPLHPNVHTGKCFSSQ
SSHLRTHQRIHPGKELNRCHESGDFNKSSFHSYQSNHTGKESYRCDSCGKGFSSSTGLIIHYRTHGTEK
PYKCEECGKCFSSSNFQCHQRVHTEEKPYKCEECGKGFWSVNLRVHQRVHRGKPYKCEECGKGFQA
AHFHIHQRVHTGKPYKCDVCGKGFSHNSPLICHRRVHTGKPYKCEACGKGFTRNTDLHIHFRVHTGK
PYKCKEKGKGFSAANLQVHQNVHTGKRFKCECTCGKGFSSSKLQTHQRVHTGKPYRCDVCGKDFSYS
SNLKLHQVIHTGKPYKCEECGKGFSWRSNLHAHQRVHSGEKPYKCEQDKSFSQAIDFRVHQRVHTGK
PYKCGVCGKGFSSSGLQSHQRVHTGKPYKCDVCGKGFYSSQFIYHQRGHTGKPYKCEECGKGFGRS
LNLRHHQRVHTGKPHICEECGKAFSLPSNLRVHLGVHTREKLFKCEECGKGFSSQARLEAHQRVHTGK
PYKCDICDKDFRHRSLTYHQVHTGKKL

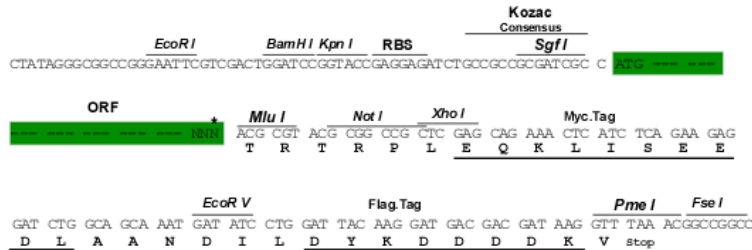
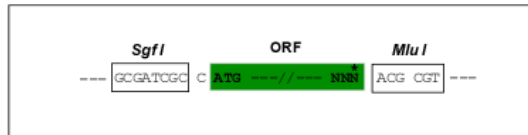
TRTRPLEQKLISEEDLAANDILDYKDDDDKV

Chromatograms: https://cdn.origene.com/chromatograms/mk8120_a06.zip

Restriction Sites: Sgfl-Mlul

Cloning Scheme:

Cloning sites used for ORF Shutting:



* The last codon before the Stop codon of the ORF

ACCN: NM_182490

ORF Size: 2397 bp

OTI Disclaimer: The molecular sequence of this clone aligns with the gene accession number as a point of reference only. However, individual transcript sequences of the same gene can differ through naturally occurring variations (e.g. polymorphisms), each with its own valid existence. This clone is substantially in agreement with the reference, but a complete review of all prevailing variants is recommended prior to use. [More info](#)
OTI Annotation: This clone was engineered to express the complete ORF with an expression tag. Expression varies depending on the nature of the gene.

Components: The ORF clone is ion-exchange column purified and shipped in a 2D barcoded Matrix tube containing 10ug of transfection-ready, dried plasmid DNA (reconstitute with 100 ul of water).

Reconstitution Method:

1. Centrifuge at 5,000xg for 5min.
2. Carefully open the tube and add 100ul of sterile water to dissolve the DNA.
3. Close the tube and incubate for 10 minutes at room temperature.
4. Briefly vortex the tube and then do a quick spin (less than 5000xg) to concentrate the liquid at the bottom.
5. Store the suspended plasmid at -20°C. The DNA is stable for at least one year from date of shipping when stored at -20°C.

RefSeq: [NM_182490.1](#), [NP_872296.1](#)

RefSeq Size: 3075 bp

RefSeq ORF: 2400 bp

Locus ID: 7770

UniProt ID: [Q86WZ6](#)

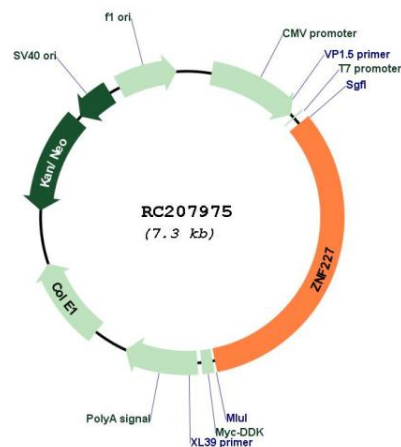
Cytogenetics: 19q13.31

Protein Families: Transcription Factors

MW: 92.5 kDa

Gene Summary: May be involved in transcriptional regulation.[UniProtKB/Swiss-Prot Function]

Product images:



Circular map for RC207975