

## Product datasheet for **RC207972**

### JAKMIP1 (NM\_144720) Human Tagged ORF Clone

#### Product data:

Product Type:	Expression Plasmids
Product Name:	JAKMIP1 (NM_144720) Human Tagged ORF Clone
Tag:	Myc-DDK
Symbol:	JAKMIP1
Synonyms:	Gababrbp; JAMIP1; MARLIN1
Mammalian Cell Selection:	Neomycin
Vector:	pCMV6-Entry (PS100001)
E. coli Selection:	Kanamycin (25 ug/mL)



[View online »](#)

**ORF Nucleotide Sequence:**

>RC207972 ORF sequence  
 Red=Cloning site Blue=ORF Green=Tags(s)

TTTTGTAATACGACTCACTATAGGGCGGCCGGAATTCGTCGACTGGATCCGGTACCGAGGAGATCTGCC  
 GCC**CGGATCGCC**

ATGTCGAAGAAAGCCGGAGCAAGGGCGAGAAGCCCGAGATGGAGACGGACGCGGTGCAGATGGCCAACG  
 AGGAGCTGCGGGCCAAGCTGACCAGCATTTCAGATCGAGTTCAGCAGGAAAAAGCAAGGTGGGCAAACT  
 GCGCGAGCGGCTGCAGGAGGCGAAGCTGGAGCGGAGCAGGAGCAGCGACGGCACACGGCTACATTTTCG  
 GAGCTCAAGGCCAAGCTGCATGAGGAGAAGACCAAGGAGCTGCAGGCGCTGCGGAGGGGCTCATCCGGC  
 AGCAGCAGCAGGAGGCGGCGCACCCGCAAGATCAAGGAGGGCGAGCTGCAGCGGCTACAGGCCACGCT  
 GAACGTGCTGCGCGACGGCGGGCCGACAAGGTCAAGACGGCGCTGTGACCGAGGCGCGGAGGAGGCG  
 CGCAGGGCCTTCGATGGAGAGCGCTGCGGCTGCAGCAGGAGATCCTGGAGCTCAAGGCAGCGCGCAATC  
 AGGCAGAGGAGGCGCTCAGTAAGTGCATGCAGGCCGACAAGACCAAGGCAGCGGACTGCGTGCCGCTA  
 CCAGGCGCACCAAGACGAGGTGCACCGCATCAAGCGCGAGTGCAGCGCGACATCCGAGGCTGATGGAT  
 GAGATCAAAGGGAAAGACCGTGTGATTCTGGCCTTGGAGAAGGAACTTGGCGTGCAGGCTGGGCAGACCC  
 AGAAGCTGCTTCTGCAGAAAGAGGCTTTGGATGAGCAGCTGGTTCAGGTCAAGGAGGCGGAGCGGACCA  
 CAGTAGTCCAAAGAGAGAGCTCCCGCCGGGATCGGGGACATGGTGGAGCTCATGGGCGTCCAGGATCAA  
 CATATGGACGAGCGAGATGTGAGGCGATTTCAACTAAAAATTGCTGAACTGAATTCAGTGATACGGAAAGC  
 TGAAGACAGAAATACGCTGTTGGCAGATGAGAGGAATGAACTGCTGAAACGCTCACGAGAGACCGAGGT  
 TCAGCTGAAGCCCTGGTGGAGAAGAACAAGCGGATGAACAAGAAGAATGAGGATCTGTTGCAGAGTATC  
 CAGAGGATGGAGGAGAAAATCAAGAACCACGCGGGAAAACGTGAAAATGAAAGAAAAGCTGTCAGCGC  
 AGGCGTCTCTGAAGCGGCATACCTCCTTGAATGACCTCAGCCTGACGAGGATGAGCAGGAGATCGAGTT  
 CCTGAGGCTGCAGGTGCTGGAGCAGCAGCAGCTCATTGACGACCTCTCACTGGAGAGAGAACGGCTGTTG  
 CGCTCCAAAAGGCATCGAGGAAAAGTCTGAAACCGCCCAAGAAGCATGTTGTGGAGACATTTTTTGGAT  
 TTGATGAGGAGTCTGTGGACTCAGAAACGTTGTCCGAAACATCCTACAACACAGACAGGACAGACAGGAC  
 CCCAGCCACGCCGAAGAAGACTTGGACGATGCCACAGCCGAGAGGAGGCTGACCTGCGCTTCTGCCAG  
 CTGACCCGGGAGTACCAGGCCCTGCAACGCGCTACGCCCTGCTCCAGGAGCAGGTGGGAGGACAGCTGG  
 ACGCTGAGAGGGAGGCCGACTCGGGAGCAGTACAAGCTGATCTGCTGAGGTGTCAGGCCAAAATCGA  
 AGATTTGAGAAGTTACTGGTTGAGAAGGACAGGATTCAGTGGGTTGAAGAGAAGCAGCTGCTCATC  
 AGAACAACCAAGACTTGTGAAAAGATTTACAGACTGAAATGGAAGAGAACCAGCTGAAGAATGAAA  
 TGAAGACGCCAAGGATCAGAACGAGCTGTTAGAATTCAGAGTGCTAGAAGTGAAGTAAGAGACTCTAT  
 CTGTTGTAACCTCTCAAACGGAGCAGACATTCTTTGAACCCAAACTGAAATTCATG

**ACGCGT**ACGCGGCCGCTCGAGCAGAAACTCATCTCAGAAGAGGATCTGGCAGCAATGATATCCTGGATT  
 ACAAGGATGACGACGATAAGGTTTAA

**Protein Sequence:**

>RC207972 protein sequence  
 Red=Cloning site Green=Tags(s)

MSKKGSRKGEKPEMETDAVQMANEELRAKLTSIQIEFQQEKSXVGLRERLQEAKLEREQEQRRHTAYIS  
 ELKAKLHEEKTKEQLALREGLIRQHEQEAAARTAKIKEGELQRLQATLNVLRDGAADKVKTALLTEAREEA  
 RRAFDGERLRLQQEILELKAARNQAEALSNMQADKTKAADLRAAYQAHQDEVHRIKRECERDIRRLMD  
 EIKGKDRVILALEKELGVQAGTQKLLQKEALDEQLVQVKEAERHHSSPKRELPPGIGDMVELMGVQDQ  
 HMDERDVRRFQLKIAELNSVIRKLEDRNTLLADERNELLRKSRETEVQLKPLVEKNKRMNKNEDLLQSI  
 QRMEEKIKNLTRNVEMKEKLSAQASLKRHTSLNDLSLTRDEQIEFLRLQVLEQQHVIDDLSLERERLL  
 RSKRHRGKSLKPPKHVYVETFFGFDEESVDSETLSETSNTDRTDRTPATPEEDLDDATAREEADLRFCC  
 LTREYQALQRAYALLQEQQVGGTLDAEREARTREQLQADLLRCQAKIEDLEKLLVEKGQDSKWVEEKQLLI  
 RTNQDILLEKIYRLEMEENQLKNEMQDAKDQNELLEFRVLELEVRDSICCKLSNGADILFEPKLFM

**TR**TRPLEQKLISEEDLAANDILDYKDDDDKV

Chromatograms: [https://cdn.origene.com/chromatograms/mk6147\\_a08.zip](https://cdn.origene.com/chromatograms/mk6147_a08.zip)

Restriction Sites: SgfI-MluI

Cloning Scheme:



ACCN: NM\_144720

ORF Size: 1878 bp

OTI Disclaimer: The molecular sequence of this clone aligns with the gene accession number as a point of reference only. However, individual transcript sequences of the same gene can differ through naturally occurring variations (e.g. polymorphisms), each with its own valid existence. This clone is substantially in agreement with the reference, but a complete review of all prevailing variants is recommended prior to use. [More info](#)

OTI Annotation: This clone was engineered to express the complete ORF with an expression tag. Expression varies depending on the nature of the gene.

Components: The ORF clone is ion-exchange column purified and shipped in a 2D barcoded Matrix tube containing 10ug of transfection-ready, dried plasmid DNA (reconstitute with 100 ul of water).

Reconstitution Method:

1. Centrifuge at 5,000xg for 5min.
2. Carefully open the tube and add 100ul of sterile water to dissolve the DNA.
3. Close the tube and incubate for 10 minutes at room temperature.
4. Briefly vortex the tube and then do a quick spin (less than 5000xg) to concentrate the liquid at the bottom.
5. Store the suspended plasmid at -20°C. The DNA is stable for at least one year from date of shipping when stored at -20°C.

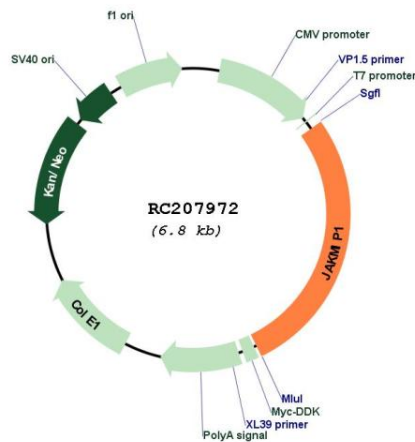
RefSeq: [NM\\_144720.4](#)

RefSeq Size: 2593 bp

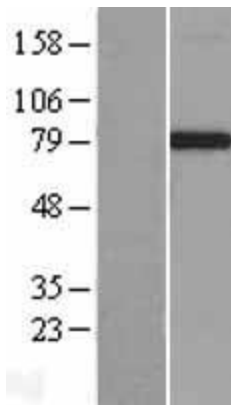
RefSeq ORF: 1881 bp

**Locus ID:** 152789  
**UniProt ID:** [Q96N16](#)  
**Cytogenetics:** 4p16.1  
**Protein Families:** Druggable Genome  
**MW:** 73.2 kDa  
**Gene Summary:** Associates with microtubules and may play a role in the microtubule-dependent transport of the GABA-B receptor. May play a role in JAK1 signaling and regulate microtubule cytoskeleton rearrangements.[UniProtKB/Swiss-Prot Function]

### Product images:



Circular map for RC207972



Western blot validation of overexpression lysate (Cat# [LY403406]) using anti-DDK antibody (Cat# [TA50011-100]). Left: Cell lysates from untransfected HEK293T cells; Right: Cell lysates from HEK293T cells transfected with RC207972 using transfection reagent MegaTran 2.0 (Cat# [TT210002]).