

Product datasheet for RC207969

HORMAD1 (NM_032132) Human Tagged ORF Clone

Product data:

Product Type:	Expression Plasmids
Product Name:	HORMAD1 (NM_032132) Human Tagged ORF Clone
Tag:	Myc-DDK
Symbol:	HORMAD1
Synonyms:	CT46; NOHMA
Mammalian Cell Selection:	Neomycin
Vector:	pCMV6-Entry (PS100001)
E. coli Selection:	Kanamycin (25 ug/mL)
ORF Nucleotide Sequence:	>RC207969 ORF sequence Red=Cloning site Blue=ORF Green=Tags(s)

TTTTGTAATACGACTCACTATAGGGCGCCGGGAATTCGTCGACTGGATCCGGTACCGAGGAGATCTGCC
GCC**CGGATCGCC**

ATGGCCACTGCCAGTTGCAGAGGACTCCCATGAGTGCCTGGTATTTCCAATAAGATATCAACTGAAC
ACCAGTCTTTGGTGTAGTGAAGAGGCTTCTAGCAGTTTCAGTATCCTGTATCACGTATTTGAGGGGAAT
ATCCCAGAATGCGCTTATGGAACAAGATCTAGATGATCTTTGTGTCAAATACTGAGAGAAGATAAA
AATTGCCAGGATCTACACAGTTAGTGAATGGATGCTAGGATGTTATGATGCTTACAGAAAAATATC
TAAGGATGGTTGTTCTAGCTGTATACACAAACCCAGAAGATCCTCAGACAATTTCAAGATGTTACCAATT
CAAATTCAAATACACCAATAATGGACCACTCATGGACTTCATAAGTAAAAACCAAGCAACGAATCTAGC
ATGTTGTCTACTGACACCAAGAAAGCAAGCATTCTCCTCATTGCAAGATTTATATCCTAATGCAAATC
TGGGGCCTTACCTAATGATGTTTGTGGTGGTGAAGGAGTTATATTTGAAGGGGAACCTATGTATTTA
AATGTGGGAGAAGTCTCAACACCTTTTCACATCTCAAAGTAAAAGTGACCACTGAGAGAGAACGAATGG
AAAATATTGACTCAACTATACTATCACCAAAACAAATAAAAACACCATTTCAAAAAATCCTGAGGGACAA
AGATGTAGAAGATGAACAGGAGCATTATACAAGTATGATTTGGACATTGAACTAAAATGGAAGAACAG
GAAAAAACCCCTGCATCTTCTGAACCTTGAAGAACCAAGTTTAGTTGTGAGGAAGATGAAATTTAGAGT
CTAAAGAAAGTCCAGATCTTTCTATTTCTCATTCTCAGGTTGAGCAGTTAGTCAATAAAACATCTGAAC
TGATATGTCTGAAAGCAAAACAAGAAGTGAAAAGTCTTTCAGAATAAAATGGCAATGGAATCAACCA
GTAAAATCTTCCAAAGAAAATCGGAAGAGAAGTCAACATGAATCTGGGAGAATAGTCTCCATCACTTTG
ATTCTTCTAGTCAAGAGTCAGTGCCAAAAGGAGAAAAGTTAGTGAACCAAGGAACATATA

ACGCGTACGCGGCCGCTCGAGCAGAACTCATCTCAGAAGAGGATCTGGCAGCAATGATATCCTGGATT
ACAAGGATGACGACGATAAGGTTTAA



[View online »](#)

Protein Sequence: >RC207969 protein sequence
Red=Cloning site Green=Tags(s)

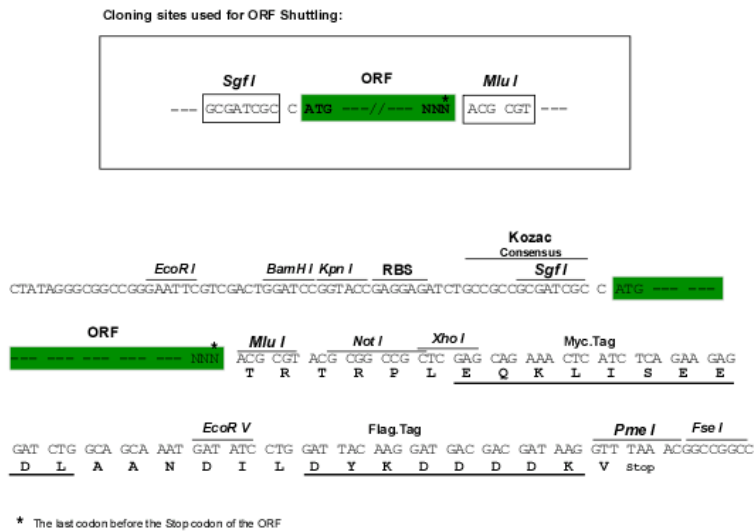
MATAQLQRTPMSALVFPNKISTEHQSLVLVKRL LAVSVSCITYLRGIFPECA YGTRYLDDLCVKILREDK
 NCPGSTQLVKWMLGCDALQKKYLRMVVLAVYTNPEDPQTISECYQFKFYTNNGPLMDFISKNSNESS
 MLSTDTKKASILLIRKIYILMQNLGPLNDVCLTMKLFYDEVTPPDYQPPGFKDGDCEGVIFEGEPMYL
 NVGEVSTPFHIFKVKVTTTERERMENIDSTILSPKQIKTPFQKILRDKDVEDEQEHYTSDDLDIETKMEEQ
 EKNPASSELEEPSLVCEEDEIMRSKESPDLSISHSQVEQLVNKTSELDMSESKTRSGKVFQNKMANGNQP
 VKSSKENRKRKRSQHESGRIVLHFDSSSQESVPKRRKFSEPKHEI

TRTRPLEQKLISEEDLAANDILDYKDDDDKV

Chromatograms: https://cdn.origene.com/chromatograms/mk6513_a03.zip

Restriction Sites: SgfI-MluI

Cloning Scheme:



ACCN: NM_032132

ORF Size: 1182 bp

OTI Disclaimer: The molecular sequence of this clone aligns with the gene accession number as a point of reference only. However, individual transcript sequences of the same gene can differ through naturally occurring variations (e.g. polymorphisms), each with its own valid existence. This clone is substantially in agreement with the reference, but a complete review of all prevailing variants is recommended prior to use. [More info](#)

OTI Annotation: This clone was engineered to express the complete ORF with an expression tag. Expression varies depending on the nature of the gene.

Components: The ORF clone is ion-exchange column purified and shipped in a 2D barcoded Matrix tube containing 10ug of transfection-ready, dried plasmid DNA (reconstitute with 100 ul of water).

Reconstitution Method:

1. Centrifuge at 5,000xg for 5min.
2. Carefully open the tube and add 100ul of sterile water to dissolve the DNA.
3. Close the tube and incubate for 10 minutes at room temperature.
4. Briefly vortex the tube and then do a quick spin (less than 5000xg) to concentrate the liquid at the bottom.
5. Store the suspended plasmid at -20°C. The DNA is stable for at least one year from date of shipping when stored at -20°C.

RefSeq: [NM_032132.5](#)

RefSeq Size: 1898 bp

RefSeq ORF: 1185 bp

Locus ID: 84072

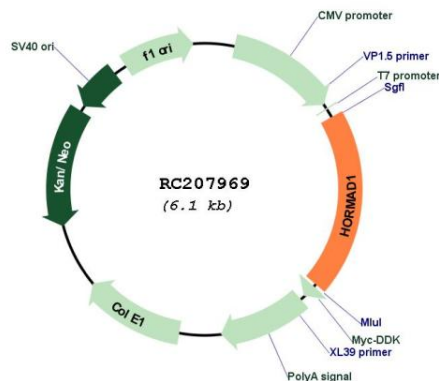
UniProt ID: [Q86X24](#)

Cytogenetics: 1q21.3

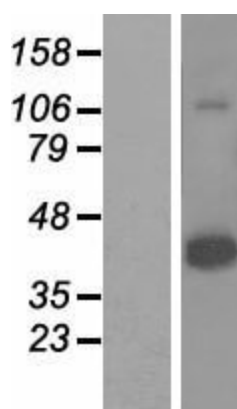
MW: 45.2 kDa

Gene Summary: This gene encodes a HORMA domain-containing protein. HORMA domains are involved in chromatin binding and play a role in cell cycle regulation. The encoded protein may play a role in meiosis, and expression of this gene is a potential marker for cancer. A pseudogene of this gene is located on the long arm of chromosome 6. Alternatively spliced transcript variants encoding multiple isoforms have been observed for this gene. [provided by RefSeq, Dec 2010]

Product images:



Circular map for RC207969



Western blot validation of overexpression lysate (Cat# [LY410325]) using anti-DDK antibody (Cat# [TA50011-100]). Left: Cell lysates from untransfected HEK293T cells; Right: Cell lysates from HEK293T cells transfected with RC207969 using transfection reagent MegaTran 2.0 (Cat# [TT210002]).