

## Product datasheet for **RC207968**

### **MARCHF3 (NM\_178450) Human Tagged ORF Clone**

#### Product data:

**Product Type:** Expression Plasmids  
**Product Name:** MARCHF3 (NM\_178450) Human Tagged ORF Clone  
**Tag:** Myc-DDK  
**Symbol:** MARCHF3  
**Synonyms:** MARCH-III; MARCH3; RNF173  
**Mammalian Cell Selection:** Neomycin  
**Vector:** pCMV6-Entry (PS100001)  
**E. coli Selection:** Kanamycin (25 ug/mL)  
**ORF Nucleotide Sequence:** >RC207968 representing NM\_178450  
**Red=Cloning site Blue=ORF Green=Tags(s)**

TTTTGTAATACGACTCACTATAGGGCGCCGGGAATTCGTCGACTGGATCCGGTACCGAGGAGATCTGCC  
GCC**CGATCGCC**

ATGACAACCAGCCGCTGCAGTCACCTGCCGAAGTCCTGCCAGACTGCACCAGCTCAGCTGCACCCGTGG  
TGAAGACGGTGGAGGATTGTGGCAGCCTAGTGAATGGGCAGCCGAGTATGTCATGCAAGTTTCAGCCAA  
GGACGGGCAGCTGCTGTCAACAGTAGTGGGACTCTTGCCACCCAGAGCCCTTCAATGACCGGCCGATG  
TGCAGGATCTGCCACGAGGGCAGCAGCCAAGAGGACTTGCTCTCCATGTGAATGTACAGGGACCTTGG  
GGACAATTCATCGGAGCTGCCTGGAGACTGGCTGTCATCCTCAAACACCAGCTACTGTGAACCTGCCA  
CTTCAGGTTTGCAGTCGAGCGCAAACCCAGGCCGTTAGTGGAGTGGCTGAGAAACCTGGCCCCAGCAT  
GAGAAGCGGACTCTGTTTGGCGACATGGTGTGCTTCTGTTTATAACTCCCCTGGCCACCATCTCGGGCT  
GGCTGTGCCTGCGGGGCGCCGTGGACCCTGCACTTTAGTAGTCGGCTGGAAGCCGTCGGACTGATTGC  
ACTCACTGTGCACTCTTCACTATTTACCTCTTTGGACTAGTGTCAATTTAGGTACCCTGTCGATTG  
TACAACGAGTGGCGTCGGACCAATCAGAGGGTATTCTCCTCATTCAAAGTCTGTCAATGTACCTTCTA  
ACCAGCCGTCCTTGCTGGCCCTCCATTCGGTCAAGAGGAACTCAAAGGAGACAGTTGTT

**ACGCGT**ACGCGGCCGCTCGAGCAGAACTCATCTCAGAAGAGGATCTGGCAGCAAATGATATCCTGGATT  
ACAAGGATGACGACGATAAGGTTTAA



[View online »](#)

**Protein Sequence:** >RC207968 representing NM\_178450  
Red=Cloning site Green=Tags(s)

MTTSRCSHLPEVLPDCTSSAAPVVKTVEDCGSLVNGQPQYVMQVSAKDGQLLSTVVRTLATQSPFNDRPM  
 CRICHEGSSQEDLLSPCECTGLGTIHRSCLEHWLSSSNTSYCELCHFRFAVERKPRPLVEWLRNPGPQH  
 EKRTLFGDMVCFLEFITPLATISGWLCLRGAVDHLHFSSRLEAVGLIALTVALFTIYLFWTLVSFRYHCL  
 YNEWRRTNQRVILLIPKSVNVPNQPSLLGLHSVKRNSKETVV

TRTRPLEQKLISEEDLAANDILDYKDDDDKV

**Chromatograms:** [https://cdn.origene.com/chromatograms/mg2875\\_g05.zip](https://cdn.origene.com/chromatograms/mg2875_g05.zip)

**Restriction Sites:** SgfI-MluI

**Cloning Scheme:**

Cloning sites used for ORF Shuttling:



\* The last codon before the Stop codon of the ORF

**ACCN:** NM\_178450

**ORF Size:** 759 bp

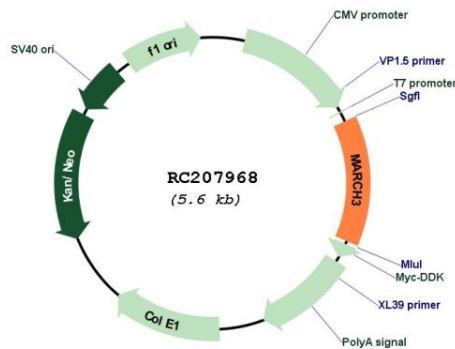
**OTI Disclaimer:** Due to the inherent nature of this plasmid, standard methods to replicate additional amounts of DNA in E. coli are highly likely to result in mutations and/or rearrangements. Therefore, OriGene does not guarantee the capability to replicate this plasmid DNA. Additional amounts of DNA can be purchased from OriGene with batch-specific, full-sequence verification at a reduced cost. Please contact our customer care team at [custsupport@origene.com](mailto:custsupport@origene.com) or by calling 301.340.3188 option 3 for pricing and delivery.

The molecular sequence of this clone aligns with the gene accession number as a point of reference only. However, individual transcript sequences of the same gene can differ through naturally occurring variations (e.g. polymorphisms), each with its own valid existence. This clone is substantially in agreement with the reference, but a complete review of all prevailing variants is recommended prior to use. [More info](#)

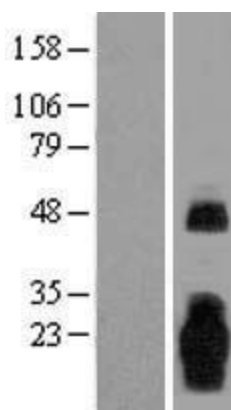
**OTI Annotation:** This clone was engineered to express the complete ORF with an expression tag. Expression varies depending on the nature of the gene.

- Components:** The ORF clone is ion-exchange column purified and shipped in a 2D barcoded Matrix tube containing 10ug of transfection-ready, dried plasmid DNA (reconstitute with 100 ul of water).
- Reconstitution Method:**
1. Centrifuge at 5,000xg for 5min.
  2. Carefully open the tube and add 100ul of sterile water to dissolve the DNA.
  3. Close the tube and incubate for 10 minutes at room temperature.
  4. Briefly vortex the tube and then do a quick spin (less than 5000xg) to concentrate the liquid at the bottom.
  5. Store the suspended plasmid at -20°C. The DNA is stable for at least one year from date of shipping when stored at -20°C.
- Note:** Plasmids are not sterile. For experiments where strict sterility is required, filtration with 0.22um filter is required.
- RefSeq:** [NM\\_178450.5](#)
- RefSeq Size:** 1816 bp
- RefSeq ORF:** 762 bp
- Locus ID:** 115123
- UniProt ID:** [Q86UD3](#)
- Cytogenetics:** 5q23.2
- Protein Families:** Druggable Genome, Transmembrane
- MW:** 28.3 kDa
- Gene Summary:** This gene encodes a member of the membrane-associated RING-CH (MARCH) family. The encoded protein is an E3 ubiquitin-protein ligase that may be involved in regulation of the endosomal transport pathway. [provided by RefSeq, Mar 2013]

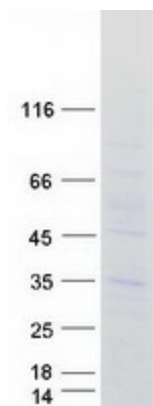
**Product images:**



Circular map for RC207968



Western blot validation of overexpression lysate (Cat# [LY405925]) using anti-DDK antibody (Cat# [TA50011-100]). Left: Cell lysates from untransfected HEK293T cells; Right: Cell lysates from HEK293T cells transfected with RC207968 using transfection reagent MegaTran 2.0 (Cat# [TT210002]).



Coomassie blue staining of purified MARCH3 protein (Cat# [TP307968]). The protein was produced from HEK293T cells transfected with MARCH3 cDNA clone (Cat# RC207968) using MegaTran 2.0 (Cat# [TT210002]).