

Product datasheet for **RC207967**

N WASP (WASL) (NM_003941) Human Tagged ORF Clone

Product data:

Product Type:	Expression Plasmids
Product Name:	N WASP (WASL) (NM_003941) Human Tagged ORF Clone
Tag:	Myc-DDK
Symbol:	N WASP
Synonyms:	N-WASP; NWASP; WASPB
Mammalian Cell Selection:	Neomycin
Vector:	pCMV6-Entry (PS100001)
E. coli Selection:	Kanamycin (25 ug/mL)



[View online »](#)

ORF Nucleotide Sequence:

>RC207967 ORF sequence
 Red=Cloning site Blue=ORF Green=Tags(s)

TTTTGTAATACGACTCACTATAGGGCGGCCGGGAATTCGTCGACTGGATCCGGTACCGAGGAGATCTGCC
 GCC**CGGATCGCC**

ATGAGCTCCGTCACGACAGCCGCCGCCGCCGGAGGTCACCAACGTGGGGTCCCTGTTGCTACCC
 CGCAGGAGAACGAGTCCCTCTTCACTTTCTCGCAAGAAATGTGTGACTATGTCTTCAGCAGTGGTGCA
 GTTATATGCAGCAGATCGGAAGTGTATGTGGTCAAAGAAGTGCAGTGGTGTGCTTGTCTTGTAAAGGAC
 AATCCACAGAGATCTTATTTTTTAAAGATATTTGACATTAAGGATGGGAACTATTGTGGGAACAAGAGC
 TATACAATAACTTTGTATATAATAGTCCTAGAGGATATTTTCATACCTTTGCTGGAGATACTTGTCAAGT
 TGCTCTTAATTTTGCCAATGAAGAAGAAGCAAAAAATTCGAAAAGCAGTTACAGACCTTTTGGCCGT
 CGACAAAGGAAATCTGAGAAAAGACGAGATCCCCAAATGGTCTAATCTACCCATGGCTACAGTTGATA
 TAAAAATCCAGAAATCACAACAATAGATTTTATGGTCCACAAGTCAACAACATCTCCCATACCAAGA
 AAAGAAGAAGGAAAAGCTAAAAAGAAGAGATTAAACCAAGGCAGATATAGGAACCAAGCAATTTCCAG
 CACATTGGACATGTTGGTTGGGATCCAAATACAGGCTTTGATCTGAATAATTTGGATCCAGAATTGAAGA
 ATCTTTTCGATATGTGTGGAATCTCAGAGGCACAACCTAAAGACAGAGAAACATCAAAAGTTATATATGA
 CTTTATTGAAAAACAGGAGGTGTTGAAGCTGTTAAAAATGAACTGCGGAGGCAAGCACCACCACCTCCA
 CCACCATCAAGGGGAGGGCCACCTCCTCCTCCTCCCTCCACACAACCTCAGGTCCTCCTCCTCCTCCTG
 CTAGGGGAAGAGGCGCTCCTCCCCACCACCTCAAGAGCTCCCACAGCTGCACCTCCACCACCGCTCC
 TTCCAGGCCAAGTGTAGCAGTCCCTCCACCACCGCCAAATAGGATGTACCCTCCTCCACCTCCAGCCCT
 CCCTCCTCAGCACCTTCAGGGCCTCCACCACCCTCCATCTGTGTTGGGGTAGGGCCAGTGGCACCAC
 CCCCACCGCCTCACCTCCACCTCCTCTGGGCCACCGCCCCGCTGGCCTGCCTCTGATGGGACCA
 TCAGGTTCCAACACTGTCAGGAAACAAAGCAGCTCTTTTAGATCAAATTAGAGAGGGTGCTCAGCTAAAA
 AAAGTGGAGCAGAACAGTCGGCCAGTGTCTGCTCTGGACGAGATGCACTGTTAGACCAGATACGACAGG
 GTATCCAATAAATCTGTGGCTGATGGCCAAGAGTCTACACCACCAACACCTGCACCCACTTCAGGAAT
 TGTGGGTGCATTAATGGAAGTGTGCAGAAAAGGAGCAAAGCCATTATTCTTCAGATGAAGATGAAGAT
 GAAGATGATGAAGAAGATTTTGAGGATGATGATGAGTGGGAAGAC

ACGCGTACGCGGCCGCTCGAGCAGAACTCATCTCAGAAGAGGATCTGGCAGCAAATGATATCCTGGATT
 ACAAGGATGACGACGATAAGGTTTAA

Protein Sequence:

>RC207967 protein sequence
 Red=Cloning site Green=Tags(s)

MSSVQQPPPPRRVTNVGSLLLTPQENESLFTFLGKKCVTMSSAVVQLYAADRNCMWSKCSGVAQLVKD
 NPQRSYFLRIFDIKDGKLLWEQELYNNFVYNSPRGYFHTFAGDTCQVALNFANEEAAKFRKAVTDLLGR
 RQRKSEKRRDPPNGPNLPMATVDIKNPEITTRNFYGPQVNNISHTKEKKKGAKKKRLTKADIGTPSNFQ
 HIGHVWDPNTGFDLNNLDPELKNLFDMCGISEAQLKDRETSKVIYDFIEKTGGVEAVKNELRRQAPPPP
 PPSRGGPPPPPPHNSGPPPPARGRGAPPPPSRAPTAAPPPPPSRPSVAVPPPPPNRMYPPPPPAL
 PSSAPSGPPPPPSVLGVGPVAPPPPPPPPPPPGLPSDGDHQPVTAGNKAALLDQIREGAQLK
 KVEQNSRPVSCSGRDALLDQIRQIQLKSVADGQESTPPTPAPTSGIVGALMEVMQKRSKAIHSSDEDED
 EDDEEDFEDDDEWED

TRTRPLEQKLISEEDLAANDILDYKDDDDKV

Chromatograms:

https://cdn.origene.com/chromatograms/mk6134_d09.zip

Restriction Sites:

Sgfl-Mlul

Cloning Scheme:



ACCN: NM_003941

ORF Size: 1515 bp

OTI Disclaimer: The molecular sequence of this clone aligns with the gene accession number as a point of reference only. However, individual transcript sequences of the same gene can differ through naturally occurring variations (e.g. polymorphisms), each with its own valid existence. This clone is substantially in agreement with the reference, but a complete review of all prevailing variants is recommended prior to use. [More info](#)

OTI Annotation: This clone was engineered to express the complete ORF with an expression tag. Expression varies depending on the nature of the gene.

Components: The ORF clone is ion-exchange column purified and shipped in a 2D barcoded Matrix tube containing 10ug of transfection-ready, dried plasmid DNA (reconstitute with 100 ul of water).

- Reconstitution Method:
1. Centrifuge at 5,000xg for 5min.
 2. Carefully open the tube and add 100ul of sterile water to dissolve the DNA.
 3. Close the tube and incubate for 10 minutes at room temperature.
 4. Briefly vortex the tube and then do a quick spin (less than 5000xg) to concentrate the liquid at the bottom.
 5. Store the suspended plasmid at -20°C. The DNA is stable for at least one year from date of shipping when stored at -20°C.

Note: Plasmids are not sterile. For experiments where strict sterility is required, filtration with 0.22um filter is required.

RefSeq: [NM_003941.4](#)

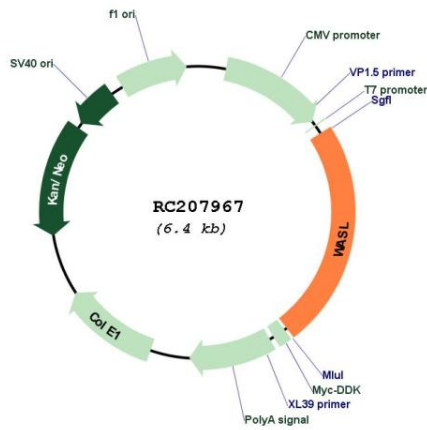
RefSeq Size: 4447 bp

RefSeq ORF: 1518 bp

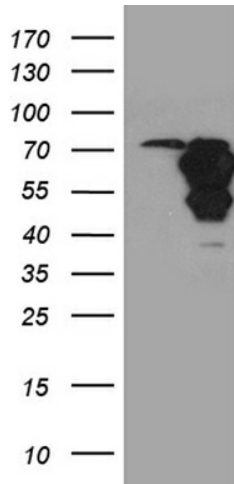
Locus ID: 8976

UniProt ID:	<u>O00401</u>
Cytogenetics:	7q31.32
Domains:	PBD, WH1, WH2
Protein Families:	Druggable Genome
Protein Pathways:	Adherens junction, Chemokine signaling pathway, Fc gamma R-mediated phagocytosis, Pathogenic Escherichia coli infection, Regulation of actin cytoskeleton
MW:	54.8 kDa
Gene Summary:	This gene encodes a member of the Wiskott-Aldrich syndrome (WAS) protein family. Wiskott-Aldrich syndrome proteins share similar domain structure, and associate with a variety of signaling molecules to alter the actin cytoskeleton. The encoded protein is highly expressed in neural tissues, and interacts with several proteins involved in cytoskeletal organization, including cell division control protein 42 (CDC42) and the actin-related protein-2/3 (ARP2/3) complex. The encoded protein may be involved in the formation of long actin microspikes, and in neurite extension. [provided by RefSeq, Jul 2013]

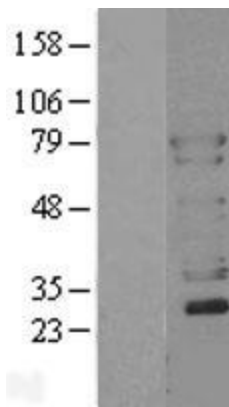
Product images:



Circular map for RC207967



HEK293T cells were transfected with the pCMV6-ENTRY control (Cat# [PS100001], Left lane) or pCMV6-ENTRY WASL (Cat# RC207967, Right lane) cDNA for 48 hrs and lysed. Equivalent amounts of cell lysates (5 ug per lane) were separated by SDS-PAGE and immunoblotted with anti-WASL (Cat# [TA811282])(1:2000). Positive lysates [LY401293] (100ug) and [LC401293] (20ug) can be purchased separately from OriGene.



Western blot validation of overexpression lysate (Cat# [LY401293]) using anti-DDK antibody (Cat# [TA50011-100]). Left: Cell lysates from untransfected HEK293T cells; Right: Cell lysates from HEK293T cells transfected with RC207967 using transfection reagent MegaTran 2.0 (Cat# [TT210002]).



Coomassie blue staining of purified WASL protein (Cat# [TP307967]). The protein was produced from HEK293T cells transfected with WASL cDNA clone (Cat# RC207967) using MegaTran 2.0 (Cat# [TT210002]).