

Product datasheet for **RC207965**

CSNK1G3 (NM_001031812) Human Tagged ORF Clone

Product data:

Product Type:	Expression Plasmids
Product Name:	CSNK1G3 (NM_001031812) Human Tagged ORF Clone
Tag:	Myc-DDK
Symbol:	CSNK1G3
Synonyms:	CKI-gamma 3; CSNK1G3L
Mammalian Cell Selection:	Neomycin
Vector:	pCMV6-Entry (PS100001)
E. coli Selection:	Kanamycin (25 ug/mL)



[View online »](#)

ORF Nucleotide Sequence:

>RC207965 ORF sequence
 Red=Cloning site Blue=ORF Green=Tags(s)

TTTTGTAATACGACTCACTATAGGGCGGCCGGAATTCGTCGACTGGATCCGGTACCGAGGAGATCTGCC
 GCC**CGCATCGCC**

ATGAAAAATAAAAAGAAAGACAAGGACAAATCAGATGATAGAATGGCAGCAGCTAGTGGTCGATCGGGAC
 ACAACACTCGAGGAAGTGGTCTTCATCGTCTGGAGTTTTAATGGTTGGACCTAACTTTAGAGTTGGAAA
 AAAAAATTGGATGTGGCAATTTTGGAGAATTACGATTAGGGAAAAATTTATACACAATGAATATGTGGCA
 ATTAAGTTGGAGCCCATGAAATCAAGAGCACCACAGCTACATTTGGAATACAGATTCTATGAGCAGTTAG
 GATCTGGAGATGGTATACCTCAAGTTTACTATTTTCGGCCCTTGTGGTAAATACAATGCTATGGTCTGGA
 ACTGCTGGGACCTAGTTTGAAGACTTGTGGTGTGTGACAGAACATTTTCTCTAAAAACAGTTCTC
 ATGATAGCTATACAACTGATTTCTCGCATGGAATATGTCCATTCAAAGAAGTTGATATACAGAGATGTAA
 AACCTGAGAACTTCTTAATAGGACGACCAGGAAACAAAACCCAGCAAGTTATTCACATTATAGATTTTGG
 TTTGGCAAAGGAATATATTGATCCGGAGACAAAGAAACACATACCATACAGAGAACAAGAGCCTTACA
 GGAACAGCTAGATATATGAGCATAAACACACATTTAGGAAAAGAACAAGTAGAAGAGACGATTTAGAAG
 CTTTAGGTCATATGTTTATGATTTTCTGAGAGGCAAGTCTTCTTGGCAAGGCTTAAAGGCTGACACATT
 AAAGGAGAGGTATCAGAAAATTGGAGATACAAAACGGGCTACACCAATAGAAGTGTATGTGAAAATTTT
 CCAGAAATGGCAACATATCTTCGTTATGTAAGAAGGCTAGATTTTTTTGAAAACAGACTATGACTACT
 TAAGAAAGCTTTTTACTGACTTGTGGTTCGAAAAGGATATATGTTTGATTATGAATATGACTGGATTGG
 TAAACAGTTGCCTACTCCAGTGGTGCAGTTTCAGCAAGATCCTGCTCTGTATCAACAGAGAAGCACAT
 CAACACAGAGATAAGATGCAACAATCCAAAACAGGTTGTAAGTTCTACAAATGGAGAGTTAAACACAG
 ATGACCCACCGCAGGACGTTCAAATGCACCCATCACAGCCCTACTGAAGTAGAAGTATGATGATGAAAC
 CAACTGCCAGAAAGTGTGAACATGTGGTGTCTGCTGTTTTTTCAAACGAAGGAAAAGGAAAACCATACAG
 CGCCACAAA

ACGCGTACGCGGCCGCTCGAGCAGAAACTCATCTCAGAAGAGGATCTGGCAGCAATGATATCCTGGATT
 ACAAGGATGACGACGATAAGGTTTAA

Protein Sequence:

>RC207965 protein sequence
 Red=Cloning site Green=Tags(s)

MENKKKDKDKSDDRMARPSGRSGHNTRGTGSSSSGVLVMPNFRVGGKIGCGNFGELELRGKPLYTNEYVA
 IKLEPMKSRAPQLHLEYRFYEQLGSGDGIPQVYFPGCGKYNAMVLELLGPSLEDLFDLCDRTFSLKTVL
 MIAIQLISRMEYVHSKNLIYRDVKPENFLIGRPGNKTQQVIHIIDFGLAKEYIDPETKKHIPPYREHSLT
 GTARYMSINTHLGKEQSRDDLEALGHMFMYFLRGSLPWQGLKADTLKERYQKIGDTRATPIEVLNENF
 PEMATYLRVRRLLDFEKPDPDYLRKLFIDLFRKGYMFDYEDWIGKQLPTPVGAVQQDPALSSNREAH
 QHRDKMQQSKNQVVSSTNGELNTDDPTAGRSNAPITAPTEVEVMDETNCQKVLNMMWCCCFKRRKRKTIQ
 RHK

TRTRPLEQKLISEEDLAANDILDYKDDDDKV

Chromatograms:

https://cdn.origene.com/chromatograms/mk6513_h08.zip

Restriction Sites:

SgfI-MluI

Cloning Scheme:


ACCN: NM_001031812

ORF Size: 1269 bp

OTI Disclaimer: The molecular sequence of this clone aligns with the gene accession number as a point of reference only. However, individual transcript sequences of the same gene can differ through naturally occurring variations (e.g. polymorphisms), each with its own valid existence. This clone is substantially in agreement with the reference, but a complete review of all prevailing variants is recommended prior to use. [More info](#)

OTI Annotation: This clone was engineered to express the complete ORF with an expression tag. Expression varies depending on the nature of the gene.

Components: The ORF clone is ion-exchange column purified and shipped in a 2D barcoded Matrix tube containing 10ug of transfection-ready, dried plasmid DNA (reconstitute with 100 ul of water).

Reconstitution Method:

1. Centrifuge at 5,000xg for 5min.
2. Carefully open the tube and add 100ul of sterile water to dissolve the DNA.
3. Close the tube and incubate for 10 minutes at room temperature.
4. Briefly vortex the tube and then do a quick spin (less than 5000xg) to concentrate the liquid at the bottom.
5. Store the suspended plasmid at -20°C. The DNA is stable for at least one year from date of shipping when stored at -20°C.

RefSeq: [NM_001031812.3](#), [NP_001026982.1](#)

RefSeq Size: 4651 bp

RefSeq ORF: 1272 bp

Locus ID: 1456

UniProt ID: [Q9Y6M4](#)

Cytogenetics: 5q23.2

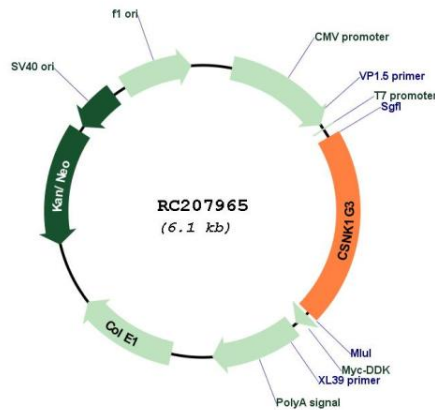
Protein Families: Druggable Genome, Protein Kinase

Protein Pathways: Hedgehog signaling pathway

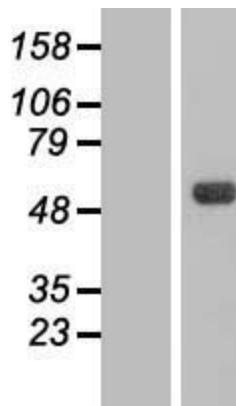
MW: 48.9 kDa

Gene Summary: This gene encodes a member of a family of serine/threonine protein kinases that phosphorylate caseins and other acidic proteins. A related protein in the African clawed frog participates in the transmission of Wnt/beta-catenin signaling. Alternatively spliced transcript variants encoding multiple isoforms have been observed for this gene. [provided by RefSeq, Jul 2012]

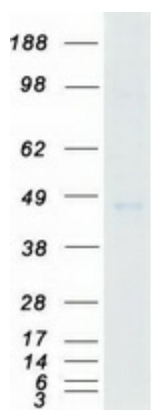
Product images:



Circular map for RC207965



Western blot validation of overexpression lysate (Cat# [LY422199]) using anti-DDK antibody (Cat# [TA50011-100]). Left: Cell lysates from untransfected HEK293T cells; Right: Cell lysates from HEK293T cells transfected with RC207965 using transfection reagent MegaTran 2.0 (Cat# [TT210002]).



Coomassie blue staining of purified CSNK1G3 protein (Cat# [TP307965]). The protein was produced from HEK293T cells transfected with CSNK1G3 cDNA clone (Cat# RC207965) using MegaTran 2.0 (Cat# [TT210002]).