

Product datasheet for RC207962

MORC1 (NM_014429) Human Tagged ORF Clone

Product data:

Product Type:	Expression Plasmids
Product Name:	MORC1 (NM_014429) Human Tagged ORF Clone
Tag:	Myc-DDK
Symbol:	MORC1
Synonyms:	CT33; MORC; ZCW6
Mammalian Cell Selection:	Neomycin
Vector:	pCMV6-Entry (PS100001)
E. coli Selection:	Kanamycin (25 ug/mL)
ORF Nucleotide Sequence:	>RC207962 ORF sequence Red=Cloning site Blue=ORF Green=Tags(s)

TTTTGTAATACGACTCACTATAGGGCGGCCGGAATTCGTCGACTGGATCCGGTACCGAGGAGATCTGCC
GCCCGCATCGCC

ATGGACGACAGGTACCCTGCGCTTCAGCGGGCCAGCTGCGTCTGGATTCATCCACGCCAACTCCACCA
CTCACAGTTTCCTTTTGGAGCACTGGCTGAATTGCTGGACAATGCAAGAGATGCAGGGGCTGAAAGACT
TGATGTCTTTTCAGTGGATAATGAAAACTGCAGGGGGATTGATGTTGTGTTTCCTGGATGATGGATG
GGCATGAGCCCTGAGGAAGCTTCAGACATCATTTACTTTGGACGATCCAAAAACGGCTGTCAACCTTGA
AGTTCATAGGGCAATACGGCAATGGTCTTAAAAGTGGTCCATGAGAATTGGAAAAGACTTTATTCTTTT
TACGAAGAAGGAAGAAACGATGACCTGTGTGTTTTTTCTCAGACATTCTGTGAAGAAGAAAGTCTTAGT
GAGGTTGTAGTTCCAATGCCCTCATGGTTAATAAGAACCAGAGAATCTGTACAGATGATCCCCAGAAAT
TTGCAATGGAAATTATCTATAATTTATAAATACTCCCCATTTAAAAGTGAAGCAGAATTGATGCAGCAGTT
TGATGTGATCTATGGAAAATGTGGTACTTTGCTGGTTATTTATAAAGTGAAGCTTCTGCTTAATGGAGAA
CCAGAGTTGGATGTTAAAAGTGAAGAAAGATATACTGATGGCTGGAGCTCTGGAGGATTTCCAGCGA
GGTGGTCATTGAGAGCTACACATCTGTTCTGTATTTAAACCATGGATGAGAATATTCAATCAAGCCAA
GAGAGTTAAAAGTAAACATCTTTGCTATTGCCTCTACAGACCCAGAAAGTATCTTTATGTCACATCTTCT
TTTAAAGGAGCATTAAAGATGAAGTTAAAAGGCAAGAAGCAGTAAAGATTGCTGAATCCATATTGA
AAGAAGCACAAATCAAAGTAAACCAAGTGTGACAGAACCTTTTATCTTCTGCCAAGGATGATTACAGAG
AGCTTTGGAAGATGTAGAAGCAAAGCAAAGAATCTTAAAGAGAAACAAAGAGAATTTAAAAACAGCAAGA
ACGCTCTCCCTGTTCTATGGAGTGAACGTAGAAAACCGAAGCCAAAGCTGGAATGTTCAATTAAGTAATA
ACCGTTTGATCAAAATGCATGAAAAAGTGGGCTCACAGTTGAAAGTGAAGTCTTACTTGGCGCAGGCGT
GGTTGGAATTGTTAATATACCCTTGAGGTCATGGAACCATCCCATAATAAACAGGAATTTCTCAATGTC
CAAGAGTATAATCATCTACTAAAAGTCAAGGACAGTACTTGGTCCAGTACTGTAAGGACACCGGCATCA
ATAATAGAAATTTAACATTGTTTTGCAATGAATTTGGATACCAGAATGACATCGATGTGGAGAAACCTTT
AAATTCTATTCAATATCAAAGAAGACAAGCCATGGGTATCCCATTCATCATAACAATGTGATCTTTGTCTT



AAATGGAGAGTCTTGCCCTCCTCTACTAATTATCAGGAAAAAGAATTTTTGACATTTGGATTTGTGCTA
 ATAATCCCAACCCTTGAAAAACAGTTGTATCAGGTAGAATGTCTACCTTCCATCCCCTGGGCACCAT
 GAGCACAATATCACCATCAAAAAATGAGAAAGAGAAGCAACTTAGAGAGTCGGTCATAAAGTATCAAAAT
 AGACTGGCAGAACAGCAGCCACAGCCTCAATTTATACCAGTGGACGAAATCACTGTCACCTCCACCTGCC
 TAACCTCAGCACATAAGGAAAAACCAAAACCCAGAAAAATCAGGCTTTTGGGCGATGACTTGAAGCATGA
 ATCTCTTTCATCTTTGAGCTTTCAGCGAGCCGTAGAGGACAGAAAAGAAACATAGAAGAGACAGACTCT
 GATGTAGAGTATATTTTCAGAAACAAAAATGAAAAAGTCTATGGAGGAGAAAAATGAACCTCAACAGC
 AGAGAATTCAGTAGCTCTGCCAGAAAAATGTCAAAGTCTGAGAGATCCAGAGAAAGTCAGATTGCTAA
 TATTACCACTGTCTGGAGAGCTCAACCAACTGAAGGGTGCCTGAAGAATGCCAGGCCGCTTCTTGGGAA
 ATGAAAAGGAAGCAGAGTCTGAACCTTGTAGAGGAATGTAAGGATTGACTGAAGATGAGAACACGAGTG
 ATTCAGATATAATCCTGGTTTCAGATAAAAGCAACACTGATGTTTCATTGAAACAAGAAAAAAGGAAAT
 TCCTCTTTTAAACCAAGAAAAACAGGAGCTGTGCAATGATGTTCTAGCAATGAAAAGAAGCTCTTCATTA
 CCTAGCTGGAAAAGCTTGTCTCAATGTGCCGATGGAAGATGTAATCTAAGTTCTGGACACATAGCCAGAG
 TTTCTGTGAGTGGCAGTTGTAAGTTGCTTCTCGCCAGCGTCTTCTCAAAGCACACCTGTCAAGGAAAC
 AGTGAGAAAAGTGAAGTCTAAGTTAAGGGAGATCTTCTGTATTTTTTCTGAGCATCAGCTACCATCA
 GAATTGGAAGAAGCTGCATTAAGTTGTGAGCTGGAGCAGTGCCAGAGCAGATGAACAAAAAGCTGAAAA
 TGTGTTTCAACAGATACAGAATACTTACATGGTCCAATATGAAAAAAAATAAAGAGGAAATTGCAAGTC
 CATTATCTATGATTCAAATACAAGAGGAATACATAATGAAATCTCTCTGGGGCAATGTGAAAAATAAAGA
 AAAATCTCTGAGGATAAGCTGAAGAATCTTCGTATAAACTGGCACTATTGTTGCAGAACTCCAAGTGG
 GTGGTCCAGAAGTGACCTGGAGCAGACTGACACTATTTAGAAGCTTTGCTTAAAGAAGATAATCTTCT
 CTTCCAGAACAAATTTAAATAAAGTAACTATAGATGCAAGACATAGACTCCCTTTAGAAAAAATGAAAAG
 ACTTCGGAAAAAT

ACGCGTACGCGGCCGCTCGAGCAGAACTCATCTCAGAAGAGGATCTGGCAGCAAATGATATCCTGGATT
 ACAAGGATGACGACGATTAAGTTTAA

Protein Sequence:

>RC207962 protein sequence
 Red=Cloning site Green=Tags(s)

MDDRYPALQRAQLRDLFIHANSTHSHFLGALAEILLDNARDAGAERLDVFSVDNEKLQGGFMLCFLDDGC
 GMSPEEASDIIYFGRSKKRLSTLKFIFGQYGNLKSMSMRIGKDFILFTKKEETMTCVFFSQTFCEEEESLS
 EVVVPMPSWLIRTRESVTDDPQKFAMELSIIYKYSPFKTEAELMQQFDVIYKCGTLLVIYNLKLNLNNGE
 PELDVKTDKEDILMAGALEDFPARWSFRAYTSVLVFNPMWRIFIQAKRVKTKHLCYLYRPRKYLVTSS
 FKGAFKDEVKKAEEAVKIAESILKEAQIKVNQCDRTSLSSAKDVLQRALEDVEAKQKNLKEKQRELKTAR
 TLSLFYGVNVENRSQAGMFIYSNNRLIKMHEKVGSQLKLSLLGAGVVGIVNIPLVEMEP SHNKQEFNLV
 QEYNHLLKVMGQYL VQYCKDTGINNRNL TLF CNEFGYQNDIDVEKPLNSIQYQRRQAMGIPFIIQCDLCL
 KWRVLPSSSTNYQEKEFFDIWICANNPNRLENSCHQVECLPSIPLGTMSTISPSKNEKEKQLRESVIKYQN
 RLAEQQPQPQFIPVDEITVTSTCLTSAHKENTKTQKIRLLGDDLKHESSLFEL SASRRGQKRNIEETDS
 DVEYISETKIMKKSMEEKMNSQQQRIPVALPENVKLAERSQRSQIANITTVWRAQPTEGCLKNAQASWE
 MKRKQSLNFVEECKVLTEDENTSDSDIILVSDKSNTDVS LKQEKEIPLLNQEKQELCNDVLAMKRSSSL
 PSWKSLNVPMDVNLSSGHIARVSVSGSKVASSPASSQSTPVKETVRKLKSKLREILLYFFPEHQLP
 ELEEPALSCELEQCPEQMKNKLMCFNQIQNTYVMVQYEKKIKRKLQSIIDYSDNTRGIHNEISLGQCENKR
 KISEDKLNLRIKLALLLQKLQLGGPEGDLQTDTYLEALLKEDNLLFQNNLNKVTIDARHRLPLEKNEK
 TSEN

TRTRPLEQKLISEEDLAANDILDYKDDDDKV

Chromatograms:

https://cdn.origene.com/chromatograms/mk6694_g08.zip

Restriction Sites:

Sgfl-MluI

Cloning Scheme:


ACCN: NM_014429

ORF Size: 2952 bp

OTI Disclaimer: The molecular sequence of this clone aligns with the gene accession number as a point of reference only. However, individual transcript sequences of the same gene can differ through naturally occurring variations (e.g. polymorphisms), each with its own valid existence. This clone is substantially in agreement with the reference, but a complete review of all prevailing variants is recommended prior to use. [More info](#)

OTI Annotation: This clone was engineered to express the complete ORF with an expression tag. Expression varies depending on the nature of the gene.

Components: The ORF clone is ion-exchange column purified and shipped in a 2D barcoded Matrix tube containing 10ug of transfection-ready, dried plasmid DNA (reconstitute with 100 ul of water).

- Reconstitution Method:**
1. Centrifuge at 5,000xg for 5min.
 2. Carefully open the tube and add 100ul of sterile water to dissolve the DNA.
 3. Close the tube and incubate for 10 minutes at room temperature.
 4. Briefly vortex the tube and then do a quick spin (less than 5000xg) to concentrate the liquid at the bottom.
 5. Store the suspended plasmid at -20°C. The DNA is stable for at least one year from date of shipping when stored at -20°C.

RefSeq: [NM_014429.2](#), [NP_055244.2](#)

RefSeq Size: 3790 bp

RefSeq ORF: 2955 bp

Locus ID: 27136

UniProt ID: [Q86VD1](#)

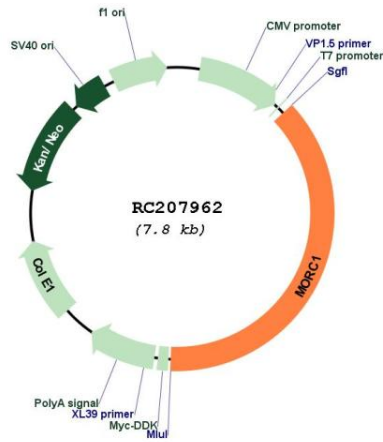
Cytogenetics: 3q13.13

Protein Families: Druggable Genome

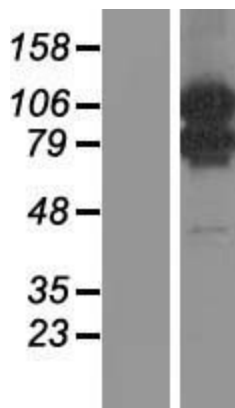
MW: 112.8 kDa

Gene Summary: This gene encodes the human homolog of mouse morc and like the mouse protein it is testis-specific. Mouse studies support a testis-specific function since only male knockout mice are infertile; infertility is the only apparent defect. These studies further support a role for this protein early in spermatogenesis, possibly by affecting entry into apoptosis because testis from knockout mice show greatly increased numbers of apoptotic cells. [provided by RefSeq, Jan 2009]

Product images:



Circular map for RC207962



Western blot validation of overexpression lysate (Cat# [LY415278]) using anti-DDK antibody (Cat# [TA50011-100]). Left: Cell lysates from untransfected HEK293T cells; Right: Cell lysates from HEK293T cells transfected with RC207962 using transfection reagent MegaTran 2.0 (Cat# [TT210002]).