

Product datasheet for **RC207961**

RIPX (RUFY3) (NM_014961) Human Tagged ORF Clone

Product data:

Product Type:	Expression Plasmids
Product Name:	RIPX (RUFY3) (NM_014961) Human Tagged ORF Clone
Tag:	Myc-DDK
Symbol:	RIPX
Synonyms:	RIPX; SINGAR1; ZFYVE30
Mammalian Cell Selection:	Neomycin
Vector:	pCMV6-Entry (PS100001)
E. coli Selection:	Kanamycin (25 ug/mL)



[View online »](#)

ORF Nucleotide Sequence:

>RC207961 ORF sequence
 Red=Cloning site Blue=ORF Green=Tags(s)

TTTTGTAATACGACTCACTATAGGGCGGCCGGAATTCGTCGACTGGATCCGGTACCGAGGAGATCTGCC
 GCC**CGCATCGCC**

ATGTCTGTCTGACGCCTCCGACCGATATGCCAACCCACCACACTGACAAGATCACACAGGCTGCCATGG
 AGACCATCTACCTTTGCAAATCCGAGTGTCCATGGATGGAGAATGGCTCTGCCTGCGAGAGCTGGATGA
 CATCTCACTTACACCTGACCCAGAGCCTACCCATGAAGATCCTAATTATCTCATGGCTAATGAACGCATG
 AACCTCATGAACATGGCCAAGCTGAGTATCAAGGGCTTGATTGAATCAGCTCTGAACCTGGGGAGGACTC
 TTGACTCTGACTATGCACCTCTCCAGCAATTTCTTGTGGTATGGAGCACTGTCTGAAACATGGCTTGAA
 AGCTAAAAAACTTTTCTCGGACAAAATAAATCCTTCTGGGGCCTCTAGAAGTGTAGAAAAGCTTGT
 CCAGAAGCCGAGAGATAACAGCAAGTGTAAAGATCTCCAGGACTTAAGACACCAGTAGGTAGAGGAA
 GAGCCTGGCTTCGTTTGGCATTAAATGAAAAGAACTTTTCTGAAATATATGAAAGCTTTGATCAATAAGAA
 AGAACTTCTCAGTGAATCTACGAACCCAATGCCCTCATGATGGAAGAAGAAGGACCCATAATTGCTGGT
 CTGTTGGTGGGTCTGAATGTCATTGATGCCAATTTCTGTATGAAAGGAGAAGACTTGACTCTCAGTTG
 GAGTTATAGATTTTTCAATGTATCTCAAGGACGGGAACAGCAGTAAAGGTACTGAAGGAGACGGTCAGAT
 TACTGCAATTTCTGGACCAGAAGAACTATGTAGAAGAACTGAACAGACATTTGAATGCTACTGTAAACAAC
 CTTCAGGCAAAAGTAGATGCATTAGAAAAATCCAACACTAAACTGACAGAGGAGCTTGCAAGTTGCAAAACA
 ACAGGATCATTACCTTACAAGAAGAAATGGAACGAGTTAAAGAGGAAAGTTCTACATACTGGAATCCAA
 TCGGAAGGGTCCCAAGCAAGACAGAAGTGCAGAAGGGCAAGCACTAAGTGAAGCAAGAAAGCATTAAAA
 GAAGAGACACAATTACGATTGGATGTTGAGAAAAGAACTGGAGATGCAGATCAGCATGAGGCAGGAGATGG
 AATTGGCTATGAAGATGCTGGAGAAGGATGCTGTGAGAAGCAGGATGCCCTGGTATCTCTCGGCAGCA
 GCTGGATGACCTCAGAGCTCTCAAGCATGAACTTGCCCTTAAAGCTGCAGAGTTTCAAGCTTAGGAGTAAAA
 CAGAAAAGTGAACATAACAGTCTGCTTGGAAAGAGAAGACTAATCAGATGGCTGCTACCATAAACAATTG
 AACAAAGTAAAAGGATTTGGTGAACAGGCAAGACCTTAAATAGTGCAGCAAAATAACTGATCCCAAA
 ACATCAT

ACGCGTACGCGGCCGCTCGAGCAGAAACTCATCTCAGAAGAGGATCTGGCAGCAATGATATCCTGGATT
 ACAAGGATGACGACGATAAGGTTTAA

Protein Sequence:

>RC207961 protein sequence
 Red=Cloning site Green=Tags(s)

MSALTPPTDMPPTTDDKITQAAMETIYLCKFRVSMDEWLCRELDLISLTPDPEPTHEDPNYLMANERM
 NLMNMAKLSIKGLIESALNLRGRLDSYAPLQQFFVMEHCLKHGLKAKKTFLLGQNKSFWGPLELVEKLV
 PEAAEITASVKDLPGLKTPVGRGRAWRLALMQKKLSEYMKALINKKELLSEFYEPNALMMEEEGAIAG
 LLVGLNVIDANFCMKGEDLDSQGVDFSMYKLDGNSSKTEGDGQITAILDQKNYVEELNRHLNATVNN
 LQAKVDALEKSNTKLTEELAVANNRIITLQEEMERVKEESSYILESNRKGPKQDRTAEGQALSEARKHLK
 EETQLRLDVEKELEMQISMRQEMELAMKMLEKDVCEKQDALVSLRQQLDDLRLKHELAFKLSDDLGVK
 QKSELNSRLEEKTNQMAATIKQLEQSEKDLVKQAKTLNSAANKLIPKHH

TRTRPLEQKLISEEDLAANDILDYKDDDDKV

Chromatograms:

https://cdn.origene.com/chromatograms/mk6726_g08.zip

Restriction Sites:

Sgfl-MluI

Cloning Scheme:


ACCN: NM_014961

ORF Size: 1407 bp

OTI Disclaimer: The molecular sequence of this clone aligns with the gene accession number as a point of reference only. However, individual transcript sequences of the same gene can differ through naturally occurring variations (e.g. polymorphisms), each with its own valid existence. This clone is substantially in agreement with the reference, but a complete review of all prevailing variants is recommended prior to use. [More info](#)

OTI Annotation: This clone was engineered to express the complete ORF with an expression tag. Expression varies depending on the nature of the gene.

Components: The ORF clone is ion-exchange column purified and shipped in a 2D barcoded Matrix tube containing 10ug of transfection-ready, dried plasmid DNA (reconstitute with 100 ul of water).

- Reconstitution Method:**
1. Centrifuge at 5,000xg for 5min.
 2. Carefully open the tube and add 100ul of sterile water to dissolve the DNA.
 3. Close the tube and incubate for 10 minutes at room temperature.
 4. Briefly vortex the tube and then do a quick spin (less than 5000xg) to concentrate the liquid at the bottom.
 5. Store the suspended plasmid at -20°C. The DNA is stable for at least one year from date of shipping when stored at -20°C.

Note: Plasmids are not sterile. For experiments where strict sterility is required, filtration with 0.22um filter is required.

RefSeq: [NM_014961.5](#)

RefSeq Size: 4419 bp

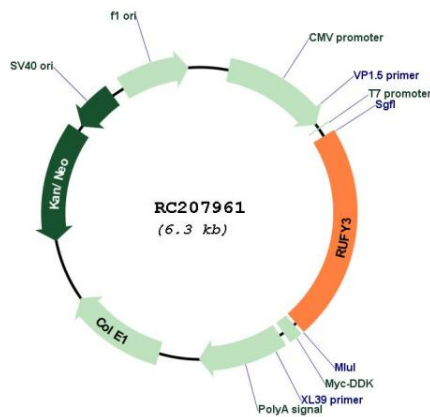
RefSeq ORF: 1410 bp

Locus ID: 22902

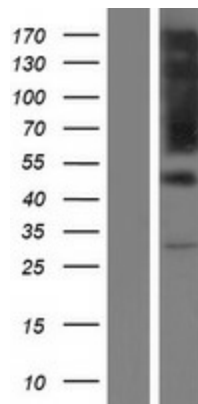
UniProt ID: [Q7L099](#)
Cytogenetics: 4q13.3
Domains: RUN
MW: 53 kDa

Gene Summary: This gene encodes a RPIP8, UNC-14, and NESCA domain-containing protein that is required for maintenance of neuronal polarity. In addition, it has been implicated in mediation of gastric cancer cell migration and invasion via interaction with P21-activated kinase-1, which promotes its expression. The encoded protein localizes to F-actin-enriched invadopodia to induce formation of protrusions, thereby facilitating cell migration. Alternative splicing results in multiple transcript variants. [provided by RefSeq, Sep 2016]

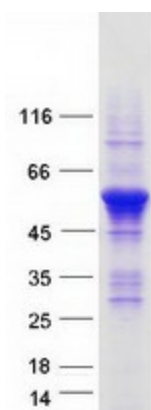
Product images:



Circular map for RC207961



Western blot validation of overexpression lysate (Cat# [LY414890]) using anti-DDK antibody (Cat# [TA50011-100]). Left: Cell lysates from untransfected HEK293T cells; Right: Cell lysates from HEK293T cells transfected with RC207961 using transfection reagent MegaTran 2.0 (Cat# [TT210002]).



Coomassie blue staining of purified RUFY3 protein (Cat# [TP307961]). The protein was produced from HEK293T cells transfected with RUFY3 cDNA clone (Cat# RC207961) using MegaTran 2.0 (Cat# [TT210002]).