

Product datasheet for **RC207960**

Lipolysis Stimulated Lipoprotein Receptor (LSR) (NM_205834) Human Tagged ORF Clone

Product data:

Product Type:	Expression Plasmids
Product Name:	Lipolysis Stimulated Lipoprotein Receptor (LSR) (NM_205834) Human Tagged ORF Clone
Tag:	Myc-DDK
Symbol:	Lipolysis Stimulated Lipoprotein Receptor
Synonyms:	ILDR3; LISCH7
Mammalian Cell Selection:	Neomycin
Vector:	pCMV6-Entry (PS100001)
E. coli Selection:	Kanamycin (25 ug/mL)



[View online »](#)

ORF Nucleotide Sequence:

>RC207960 representing NM_205834
 Red=Cloning site Blue=ORF Green=Tags(s)

TTTTGTAATACGACTCACTATAGGGCGGCCGGGAATTCGTCGACTGGATCCGGTACCGAGGAGATCTGCC
 GCC**CGGATCGCC**

ATGCAACAGGACGGACTTGGAGTAGGGACAAGGAACGGAAGTGGGAAGGGGAGGAGCGTGCACCCCTCCT
 GGCTTGGTGCAGCGCCGCCCCCTAAGTACTTTGGAAGGACGCGCGGCCAGACGCGCCAGACGGC
 CGCGATGGCGCTGTTGGCCGGCGGGCTCTCCAGAGGGCTGGGCTCCACCCGGCCGCCAGGCCGGGAC
 GCGGTCTGCTTCTGTTGGCTTCTGCTTAGCACCTGGTGCACAGCTCCTGCCAGGGCCATCCAGGTGACCG
 TGTCCAACCCCTACCACGTGGTATCCTCTCCAGCCTGTGACCTGCCGTACCTACCAGATGACCTC
 GACCCCAACGCAACCCATCGTCACTGGAAGTACAAGTCTTTCTGCCGGGACCGCATCGCCGATGCCTTC
 TCCCCGGCCAGCGTGCACAACAGCTCAATGCCAGCTGGCAGCCGGGAACCCAGGCTACAACCCCTACG
 TTGAGTGCCAGGACAGCGTGCACACCGTACGGGTCGTGGCCACCAAGCAGGGCAACGCTGTGACCCCTGGG
 AGATTACTACCAGGGCCGGAGGATTACCATCACCGGAAATGCTGACCTGACCTTTGACCAGACGGCGTGG
 GGGGACAGTGGTGTGATTACTGCTCCGTGGTCTCAGCCAGGACCTCCAGGGGAACAATGAGGCCCTACG
 CAGAGCTCATCGTCTTGGGAGGACCTCAGGGGTGGCTGAGCTTTACCTGGTTTTACGGCGGGGCCAT
 AGAAGACTGGCTTCTGTTGGTATGCCTGGCTGCCTTCTCATCTTCTCCTCTCTGGGACTCTGC
 TGGTGCCAGTGTGCCCGCACACTTGTGCTGCTACGTACAGTGGCCCTGCTGCCAGACAAGTGTGCT
 GCCCGAGGCCCTGTATGCCCGCCGCAAGCAGCCACCTCAGGTGTTCCAGCATTTATGCCCCAGCAC
 CTATGCCACCTGTCTCCCGCAAGACCCACCCACCAGCTATGATCCCATGGGCCCTGCCTACAAC
 GGGTACCCTGGAGGATACCCTGGAGACGTTGACAGGAGTAGCTCAGCTGGTGGCAAGGCTCCTATGTAC
 CCCTGCTTCGGGACACGGACAGCAGTGTGGCCTCTGAAGTCCGACGTGGCTACAGGATTACAGCCAGCCA
 GCAGGACGACTCCATGCCGGTCTGTACTACATGGAGAAGGAGCTGGCCAACCTCGACCCTTCTCGACCT
 GGCCCCCAGTGGCCGTGTGGAGCGGGCCATGAGTGAAGTACCTCCCTCCACGAGGACGACTGGCGAT
 CTGCGCTTCCCGGGCCCTGCCCTCACCCGATCCGGGATGAGGAGTGGGGTGGCCACTCCCCCGGAG
 TCCCAGGGGATGGGACCAGGAGCCGCCAGGGAGCAGGCAGGCGGGGGTGGCGGGCCAGGCGGCCCGG
 GCCCGCTCCGTGGACGCCCTGGACGACCTCACCCGCGAGCACCGCCGAGTACGGGAGCAGGTCTCCA
 CGAGTAATGGTGGGAGAAGCCGGCCTACATGCCCGCGGAGCCGACCCGGGACGACCTATGACCA
 AGACGACTCGAGGGACTCCCACGCTCCCGGGACCCCACTACGACGACTTACGGTCTCGGGAGCGCCCT
 CCTGCCGACCCAGGTCCACCACCACCGTACCCGGGACCTCGGGACAACGGCTCCAGGTCCGGGGACC
 TCCCTATGATGGGCGGCTACTGGAGGAGGCTGTGAGGAAGAAGGGTTCGGAGGAGGAGGAGACCCCA
 CAAGGAGGAGGAGGAAGAGGCTACTACCCGCCGCGCCGCCCCCGTACTCGGAGACCGACTCGCAGGCG
 TCCCGAGAGCGCAGGCTCAAGAAGAACTTGGCCCTGAGTCGGGAAAGTTAGTCGTC

ACGCGTACGCGGCCGCTCGAGCAGAACTCATCTCAGAAGAGGATCTGGCAGCAATGATATCCTGGATT
 ACAAGGATGACGACGATAAGGTTAA

Protein Sequence: >RC207960 representing NM_205834
Red=Cloning site Green=Tags(s)

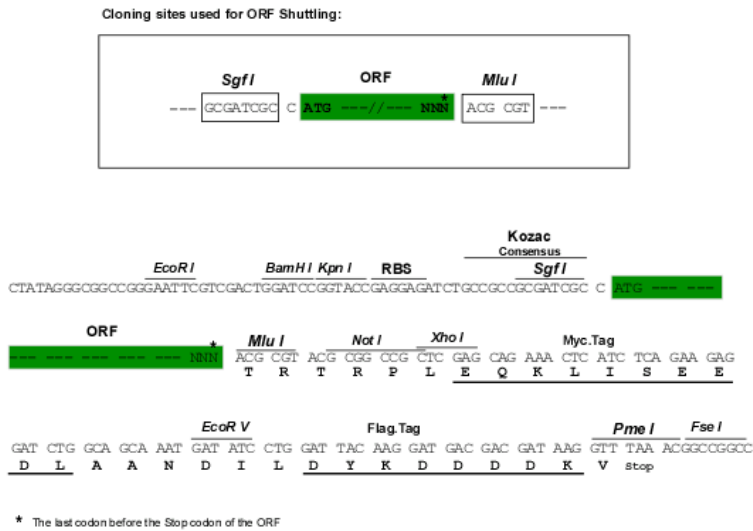
MQQDGLGVGTRNGSGKGRSVHPSWPWCAPRPLRYFGRDARARRAQTAAALLAGGLSRGLGSHPPAAAGR
 AVVFVWLLLLSTWCTAPARAIQVTVSNPYHVILFQPVTLPCTYQMTSTPTQPIVIWKYSFCRDRIADAF
 SPASVDNQLNAQLAAGNPGYNPYVEQCQDSVRTVRVVATKQGNVTLGDYYQGRRIITIGNADLTFDQTAW
 GDSGVYYCSVVSQAQDLQGNNEAYAEILVLRGRTSGVAELLPGFQAGPIEDWLFVVVVCLAFLIFLLLGIC
 WCQCCPHTCCCYVRCPCPCDKCCPEALYAAGKAATSGVPSIYAPSTYAHLSPAKTPPPPAMIPMPAYN
 GYPGGYPGDVDRSSSAGGQGSYVPLLRDTSVASEVRSYRIQASQQDDSMRVLYYMEKELANFDPSPR
 GPPSGRVERAMSEVTSLEHEDWRSRPSRGPALTPIRDEEWGGHSPRSPRGWDQEPAREQAGGGWRARRPR
 ARSYDALDDLTPSTAESGSRSPSTNNGRSRAYMPPRSRSDDL YDQDSDRDFPRSRDPHYDDFRSRRP
 PADPRSHHRTDRPDNGSRSGDLPYDGRLL EEA VRKKGSEERRRPHKEEEEEAYYPAPPYSETDSQA
 SRERLKKNLALSRESL VV

TRTRPLEQKLISEEDLAANDILDYKDDDDKV

Chromatograms: https://cdn.origene.com/chromatograms/ja1869_b02.zip

Restriction Sites: Sgfl-MluI

Cloning Scheme:

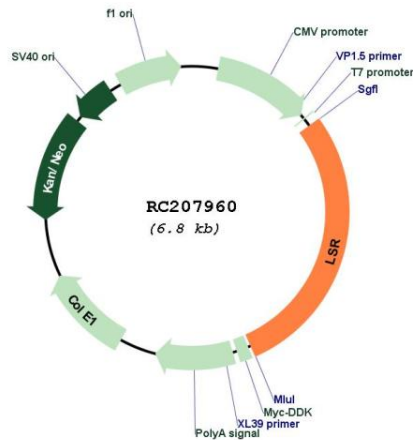


ACCN: NM_205834

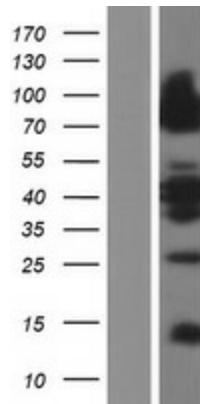
ORF Size: 1947 bp

OTI Disclaimer:	<p>Due to the inherent nature of this plasmid, standard methods to replicate additional amounts of DNA in E. coli are highly likely to result in mutations and/or rearrangements. Therefore, OriGene does not guarantee the capability to replicate this plasmid DNA. Additional amounts of DNA can be purchased from OriGene with batch-specific, full-sequence verification at a reduced cost. Please contact our customer care team at custsupport@origene.com or by calling 301.340.3188 option 3 for pricing and delivery.</p> <p>The molecular sequence of this clone aligns with the gene accession number as a point of reference only. However, individual transcript sequences of the same gene can differ through naturally occurring variations (e.g. polymorphisms), each with its own valid existence. This clone is substantially in agreement with the reference, but a complete review of all prevailing variants is recommended prior to use. More info</p>
OTI Annotation:	This clone was engineered to express the complete ORF with an expression tag. Expression varies depending on the nature of the gene.
Components:	The ORF clone is ion-exchange column purified and shipped in a 2D barcoded Matrix tube containing 10ug of transfection-ready, dried plasmid DNA (reconstitute with 100 ul of water).
Reconstitution Method:	<ol style="list-style-type: none"> 1. Centrifuge at 5,000xg for 5min. 2. Carefully open the tube and add 100ul of sterile water to dissolve the DNA. 3. Close the tube and incubate for 10 minutes at room temperature. 4. Briefly vortex the tube and then do a quick spin (less than 5000xg) to concentrate the liquid at the bottom. 5. Store the suspended plasmid at -20°C. The DNA is stable for at least one year from date of shipping when stored at -20°C.
Note:	Plasmids are not sterile. For experiments where strict sterility is required, filtration with 0.22um filter is required.
RefSeq:	NM_205834.3 , NP_991403.1
RefSeq Size:	2292 bp
RefSeq ORF:	1806 bp
Locus ID:	51599
UniProt ID:	Q86X29
Cytogenetics:	19q13.12
Protein Families:	Druggable Genome, Transcription Factors, Transmembrane
MW:	71.4 kDa
Gene Summary:	Probable role in the clearance of triglyceride-rich lipoprotein from blood. Binds chylomicrons, LDL and VLDL in presence of free fatty acids and allows their subsequent uptake in the cells (By similarity).[UniProtKB/Swiss-Prot Function]

Product images:



Circular map for RC207960



Western blot validation of overexpression lysate (Cat# [LY404260]) using anti-DDK antibody (Cat# [TA50011-100]). Left: Cell lysates from untransfected HEK293T cells; Right: Cell lysates from HEK293T cells transfected with RC207960 using transfection reagent MegaTran 2.0 (Cat# [TT210002]).