

Product datasheet for **RC207959**

RALGPS2 (NM_152663) Human Tagged ORF Clone

Product data:

Product Type:	Expression Plasmids
Product Name:	RALGPS2 (NM_152663) Human Tagged ORF Clone
Tag:	Myc-DDK
Symbol:	RALGPS2
Synonyms:	dj595C2.1
Mammalian Cell Selection:	Neomycin
Vector:	pCMV6-Entry (PS100001)
E. coli Selection:	Kanamycin (25 ug/mL)



[View online »](#)

ORF Nucleotide Sequence:

>RC207959 representing NM_152663
 Red=Cloning site Blue=ORF Green=Tags(s)

TTTTGTAATACGACTCACTATAGGGCGGCCGGAATTCGTCGACTGGATCCGGTACCGAGGAGATCTGCC
 GCC**GCGATCGCC**

ATGGACCTAATGAACGGGCAGGCAAGCAGTGTCAATATTGCAGCTACTGCTTCTGAGAAAAGTAGCAGT
 CTGAATCCTTAAGTGACAAAGGCTCTGAATTGAAGAAAAGCTTTGATGCTGTGGTATTTCGATGTTCTTAA
 GGTACACCAGAAGAATATGCGGGTCAGATAACATTAATGGATGTTCCAGTATTTAAAGCTATTCACCA
 GATGAGCTTTCAAGTTGTGGATGGAATAAAAAAGAAAAATATAGTTCTGCACCAATGCAGTTGCCTTCA
 CAAGAAGATTCAATCATGTAAGCTTTTGGGTTGTTAGAGAGATTCTTCATGCTCAAACATTAATAAATTAG
 AGCAGAAGTTTGTAGCCACTATATTAAGCTGCTAAGAACTGTATGAGCTGAATAACCTTCATGCACTT
 ATGGCAGTGGTTTCTGGCCTACAGAGTGCCCAATTTTCAGGTTGACTAAAACATGGGCGTTATTAAGTC
 GAAAAGACAAAACCTTTGAAAAATAGAATATGTAATGAGTAAAGAAGATAACTACAAAAGACTCAG
 AGACTATATAAGTAGCTTAAAGATGACACCTTGCATTCCCTATTTAGGTATCTATTTGTGAGATTTAACA
 TACATCGATTACGATACCCATCAACTGGCAGCATTCTAGAAAATGAGCAAAGATCAAATTTAATGAATA
 ATATCCTTCGAATAATTTCTGATTTACAGCAGTCTTGTGAATATGATATCCCATGTTGCCTCATGTCCA
 AAAATATCTCAACTCTGTTTCAGTATATAGAAGAACTACAAAAATTTGTGGAAGACGATAATTACAAGCTT
 TCATTAAGATAGAACCAGGGACAAGCACCCACGTTCTGCTGCTCCAGAGAAGATTTAGTAGGTCCTG
 AAGTAGGAGCGTCTCCACAGAGTGGACGAAAAAGTGTGGCAGCTGAAGGAGCCTTGCTCCACAGACACC
 GCCATCCCCTCGGAATCTGATCCACATGGACATAGGAAGTCCATAGTTTGGGTATAATTTCAATTCAT
 AAAATGAACACAGCAGAATTTAAGAGTGAACGTTTCCAATGCAGGACCAAGACATCTGTTAGATGATA
 GCGTCTGGAGCCCCATGCGCCATCTCGAGGCCAAGCTGAAAGTCTACTCTTTCTAGTGAATATCAAT
 AGGTAGCAGCGATGGTTCTGAACTAAGTGAAGAGACCTCATGGCCTGCTTTTGAAGGAACAGATTATAC
 CATTCTCTCGGCCCGGTGACAAGAGTGGCACGAAATGGCTATCGAAGTCACATGAAGGCCAGCAGTTCTG
 CAGAATCAGAAGATTTGGCAGTACATTTATATCCAGGAGCTGTTACTATTCAAGGTGTTCTCAGGAGAAA
 AACTTTGTAAAAGAAGGCAAAAAGCCTACAGTAGCATCTTGGACAAAATATTGGCAGCTTTGTGTGGG
 ACACAGCTTTTTACTATGCTGCCAAATCTCTAAAGGCTACCGAAAAGAAAACATTTCAAATCAACATCCA
 ATAAGAACGTATCTGTGATAGGATGGATGGTATGATGGCTGATGACCCTGAACATCCTGATCTCTTCT
 GCTGACTGACTCTGAGAAAGAAATTCGTACAAGTTTCAAGCTGGCAATAGAATGAATGCAATGTTATGG
 TTTAAGCATTGAGTGCAGCCTGCCAAAGTAACAAACAACAGGTTCTACAACTTGATGACTTTTGAG

ACGCGTACGCGGCCGCTCGAGCAGAAACTCATCTCAGAAGAGGATCTGGCAGCAAATGATATCCTGGATT
 ACAAGGATGACGACGATAAGGTTTAA

Protein Sequence:

>RC207959 representing NM_152663
 Red=Cloning site Green=Tags(s)

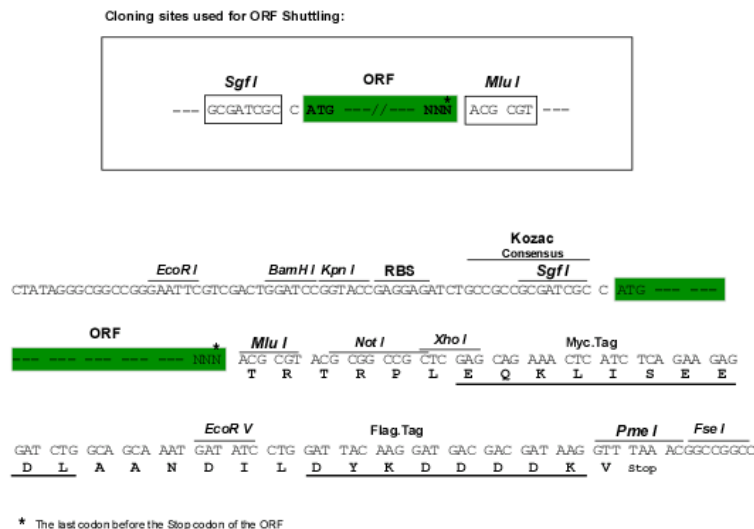
MDLMNGQASSVNI AATASEKSSSESLSDKGSELKKSFDVAVFVFLKVTPEEYAGQITLMDVPVFKAIQP
 DELSSCGWNKKEKYSSAPNAFAFTRRFNHVSFWVREILHAQTLKIRAEVL SHYIKTAKKLYELNHLHAL
 MAVVSQLQSAPIFRLTKTWALLSRKDKTTFEKLEYVMSKEDNYKRLRDYISSLKMTPCIPYLG IYLSDLT
 YIDSAYPSTGSILENEQRSNLMNNILRIISDLQQSCEYDIPMLPHVQKYLNSVQYIEELQKFVEDDNYKL
 SLKIEPGTSTPRSAASREDLVGPEVGAS PQSGRKSVA AEGALLPQTTPSPRNLIPHGRKCHSLGYNFIH
 KMNTAEFKSATFPNAGPRHLDDSVMEPHAPSRQAESSTLSSGISIGSSDGSSELSEETSWPAFERNRLY
 HSLGPVTRVARNGYRSHMKASSSAESED LAVHLYPGAVTIQGVLRKRLLLKEGKKPTVASWTKYWAALCG
 TQLFYAAKSLKATERKHFKSTSNKNVSVIGWMMADDPEHPDLFLLTDSEKGNYSYK FQAGNRMNAMLW
 FKHL SAACQSNKQQVPTNLMTFE

TRTRPLEQKLISEEDLAANDILDYKDDDDKV

Restriction Sites:

Sgfl-MluI

Cloning Scheme:



ACCN: NM_152663

ORF Size: 1749 bp

OTI Disclaimer: The molecular sequence of this clone aligns with the gene accession number as a point of reference only. However, individual transcript sequences of the same gene can differ through naturally occurring variations (e.g. polymorphisms), each with its own valid existence. This clone is substantially in agreement with the reference, but a complete review of all prevailing variants is recommended prior to use. [More info](#)

OTI Annotation: This clone was engineered to express the complete ORF with an expression tag. Expression varies depending on the nature of the gene.

Components: The ORF clone is ion-exchange column purified and shipped in a 2D barcoded Matrix tube containing 10ug of transfection-ready, dried plasmid DNA (reconstitute with 100 ul of water).

Reconstitution Method:

1. Centrifuge at 5,000xg for 5min.
2. Carefully open the tube and add 100ul of sterile water to dissolve the DNA.
3. Close the tube and incubate for 10 minutes at room temperature.
4. Briefly vortex the tube and then do a quick spin (less than 5000xg) to concentrate the liquid at the bottom.
5. Store the suspended plasmid at -20°C. The DNA is stable for at least one year from date of shipping when stored at -20°C.

Note: Plasmids are not sterile. For experiments where strict sterility is required, filtration with 0.22um filter is required.

RefSeq: [NM_152663.5](#)

RefSeq Size: 2458 bp

RefSeq ORF: 1752 bp

Locus ID: 55103

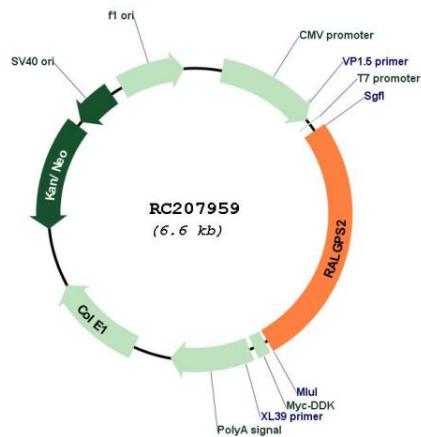
UniProt ID: [Q86X27](#)

Cytogenetics: 1q25.2

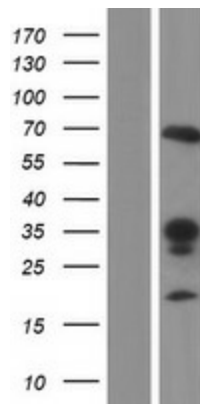
MW: 65 kDa

Gene Summary: Guanine nucleotide exchange factor for the small GTPase RALA. May be involved in cytoskeletal organization. May also be involved in the stimulation of transcription in a Ras-independent fashion (By similarity).[UniProtKB/Swiss-Prot Function]

Product images:



Circular map for RC207959



Western blot validation of overexpression lysate (Cat# [LY407385]) using anti-DDK antibody (Cat# [TA50011-100]). Left: Cell lysates from untransfected HEK293T cells; Right: Cell lysates from HEK293T cells transfected with RC207959 using transfection reagent MegaTran 2.0 (Cat# [TT210002]).