

Product datasheet for **RC207958**

LMBRD1 (NM_018368) Human Tagged ORF Clone

Product data:

Product Type:	Expression Plasmids
Product Name:	LMBRD1 (NM_018368) Human Tagged ORF Clone
Tag:	Myc-DDK
Symbol:	LMBRD1
Synonyms:	C6orf209; LMBD1; MAHCF; NESI
Mammalian Cell Selection:	Neomycin
Vector:	pCMV6-Entry (PS100001)
E. coli Selection:	Kanamycin (25 ug/mL)



[View online »](#)

ORF Nucleotide Sequence:

>RC207958 ORF sequence
 Red=Cloning site Blue=ORF Green=Tags(s)

TTTTGTAATACGACTCACTATAGGGCGGCCGGGAATTCGTCGACTGGATCCGGTACCGAGGAGATCTGCC
 GCC**CGCATCGCC**

ATGGCGACTTCTGGCGCGCCTCGGCGGAGCTGGTGATCGGCTGGTGCATATTCGGCCTCTTACTACTGG
 CTATTTTGGCATTCTGCTGGATATATGTTTCGTAATACCAAAGTCGGCGGAAAGTGAAGTTGTCTCCAC
 CATAACAGCAATTTTTCTCTAGCAATTGCACTTATCACATCAGCACTTCTACCAGTGGATATATTTTGG
 GTTTCTTACATGAAAAATCAAAATGGTACATTTAAGGACTGGGCTAATGCTAATGTCAGCAGACAGATTG
 AGGACACTGTATTATACGGTTACTATACTTTATATTCTGTTATATTGTTCTGTGTGTTCTTCTGGATCCC
 TTTTGTCTACTTCTATTATGAAGAAAAGGATGATGATACTAGTAAATGTAAGTCAAAATAAAACGGCA
 CTCAGTATACTTTGGGATTTGTTGTGATTTGTGCACTGCTTCTTTTAGTTGGTGCCTTTGTTCCATTGA
 ATGTTCCCAATAACAAAATTCTACAGAGTGGGAAAAAGTGAAGTCCCTATTTGAAGAACTTGAAGTAG
 TCATGGTTTAGCTGCATTGTCATTTTCTATCAGTTCTCTGACCTTGATTGGAATGTTGGCAGCTATAACT
 TACACAGCCTATGGCATGTCTGCGTTACCTTTAAATCTGATAAAAAGGCACTAGAAGCGCTGCTTATGAAC
 GTTTGAAAAACACTGAAGACATTGAAGAAGTAGAACAACACATTCAAACGATTAATCAAAAAGCAAAGA
 TGGTCGACCTTTGCCAGCAAGGGATAAACCGCGCCTTAAACAATTTGAAGAAAGGTTACGAACACTTAAG
 AAGAGAGAGAGGCATTTAGAATTCATTGAAAACAGCTGGTGGACAAAATTTGTGGCGCTCTGCGTCCCC
 TGAAGATCGTCTGGGAAATTTTTTCACTTAGTTGCATTGCTGTTTGAATTTCTCTCTTCTTGTCAA
 TTTAGATAAAGCTCTTCATTGAGCTGGAATAGATTCTGGTTTCATAATTTTGGAGCTAACCTGAGTAAT
 CCACTGAATATGCTTTTGCCTTTACTACAAACAGTTTTCCCTCTTGATTATATCTTATAACAATTATTA
 TTATGTACTTTATTTTTACTTCAATGGCAGGAATTCGAAATATTGGCATATGGTTCTTTGGGTTAGATT
 ATATAAAATCAGAAGAGGTAGAACCAGGCCCAAGCACTCCTTTTTCTCTGCATGATACTTCTGCTTATT
 GTCCTTACACTAGCTACATGATTTATAGTCTTCTGCTCCCAATATGTTATGATGAAGCCAAAATTACT
 TAATAGAGACTAATATACTTCTGATAATCATAAAGGCAATTCACCCTTCTGTGCCAAAGAGATGTGA
 TGCAGATGCTCCTGAAGATCAGTGTACTGTTACCCGGACATACCTATTCTTCCAAAGTTCTGGTTCTTC
 AGTGTCTTACTATTTTGGTAACTGGGCCTTCTTGGGGATTTTTGATTGGATTAATTGTATCCTGTT
 GTAAAGGGAAGAAATCGGTTATTGAAGGAGTAGATGAAGATTCAGACATAAGTGATGATGAGCCCTCTGT
 CTATTCTGCT

ACGCGTACGCGGCGCCTCGAGCAGAAACTCATCTCAGAAGAGGATCTGGCAGCAAATGATATCCTGGATT
 ACAAGGATGACGACGATAAGGTTTAA

Protein Sequence:

>RC207958 protein sequence
 Red=Cloning site Green=Tags(s)

MATSGAASAELVIGWCIFGLLLLAILAFWCWYVRYKYSRRESEVVSTITAIIFSLAIALITSALLPVDIFL
 VSYMKNQNGTFKDWANANVSRQIEDTVLYGYTLYSVILFCVFFWIPFVYFYEEKDDDDTSKCTQIKTA
 LKYTLGFVVICALLLVGAFVPLNVPNNKNSTEWKVKSLFEELGSSHGLAALSFSSSLTIGMLAAIT
 YTAYGMSALPLNLIKGTRSAAYERLENTEDIEEVEQHIQTIKSKSKDGRPLPARDKRALQFEERLRLK
 KRERHLEFIENSWWTKFCGALRPLKIVWGIFFILVALLFVISLFLSNLDKALHSAGIDSGFIFGANLSN
 PLNMLLPLLQTVFPLDYILITIIIMYFIFTSMAGIRNIGIWWFVWRLYKIRRGTRPQALLFLCMILLI
 VLHTSYMIYSLAPQYVYMGSONYL IETNITSDNHKGNSTL SVPKRCADADAPEDQCTVTRTYLFLHKFWF
 SAAYYFGNWAFLGVFLIGLIVSCKGKKSVEGVDESDISDDEPSVYSA

TRTRPLEQKLI SEEDLAANDILDYKDDDDKV

Chromatograms:

https://cdn.origene.com/chromatograms/mk6352_e10.zip

Restriction Sites:

Sgfl-Mlul

Cloning Scheme:


ACCN: NM_018368

ORF Size: 1620 bp

OTI Disclaimer: Due to the inherent nature of this plasmid, standard methods to replicate additional amounts of DNA in E. coli are highly likely to result in mutations and/or rearrangements. Therefore, OriGene does not guarantee the capability to replicate this plasmid DNA. Additional amounts of DNA can be purchased from OriGene with batch-specific, full-sequence verification at a reduced cost. Please contact our customer care team at custsupport@origene.com or by calling 301.340.3188 option 3 for pricing and delivery.

The molecular sequence of this clone aligns with the gene accession number as a point of reference only. However, individual transcript sequences of the same gene can differ through naturally occurring variations (e.g. polymorphisms), each with its own valid existence. This clone is substantially in agreement with the reference, but a complete review of all prevailing variants is recommended prior to use. [More info](#)

OTI Annotation: This clone was engineered to express the complete ORF with an expression tag. Expression varies depending on the nature of the gene.

Components: The ORF clone is ion-exchange column purified and shipped in a 2D barcoded Matrix tube containing 10ug of transfection-ready, dried plasmid DNA (reconstitute with 100 ul of water).

- Reconstitution Method:**
1. Centrifuge at 5,000xg for 5min.
 2. Carefully open the tube and add 100ul of sterile water to dissolve the DNA.
 3. Close the tube and incubate for 10 minutes at room temperature.
 4. Briefly vortex the tube and then do a quick spin (less than 5000xg) to concentrate the liquid at the bottom.
 5. Store the suspended plasmid at -20°C. The DNA is stable for at least one year from date of shipping when stored at -20°C.

RefSeq: [NM_018368.2](#), [NP_060838.2](#)

RefSeq Size: 2308 bp

RefSeq ORF: 1623 bp

Locus ID: 55788

UniProt ID: [Q9NUN5](#)

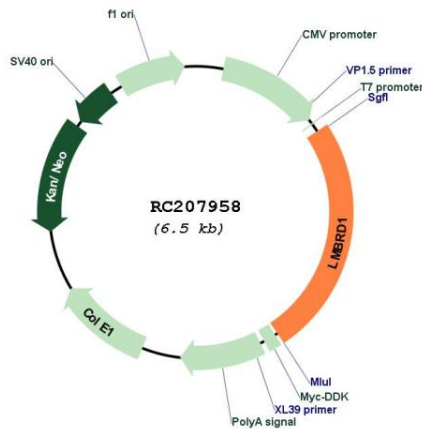
Cytogenetics: 6q13

Protein Families: Transmembrane

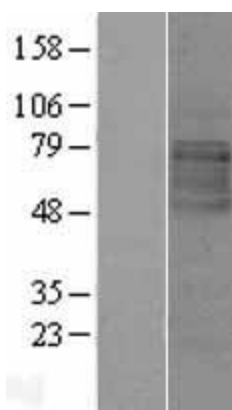
MW: 61.4 kDa

Gene Summary: This gene encodes a lysosomal membrane protein that may be involved in the transport and metabolism of cobalamin. This protein also interacts with the large form of the hepatitis delta antigen and may be required for the nucleocytoplasmic shuttling of the hepatitis delta virus. Mutations in this gene are associated with the vitamin B12 metabolism disorder termed, homocystinuria-megaloblastic anemia complementation type F.[provided by RefSeq, Oct 2009]

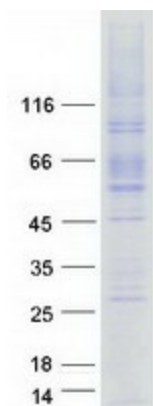
Product images:



Circular map for RC207958



Western blot validation of overexpression lysate (Cat# [LY413120]) using anti-DDK antibody (Cat# [TA50011-100]). Left: Cell lysates from untransfected HEK293T cells; Right: Cell lysates from HEK293T cells transfected with RC207958 using transfection reagent MegaTran 2.0 (Cat# [TT210002]).



Coomassie blue staining of purified LMBRD1 protein (Cat# [TP307958]). The protein was produced from HEK293T cells transfected with LMBRD1 cDNA clone (Cat# RC207958) using MegaTran 2.0 (Cat# [TT210002]).