

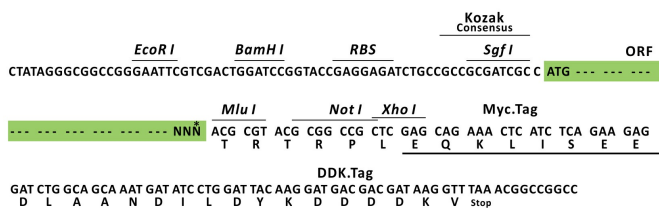
Product datasheet for RC207954L1

SLC22A16 (NM_033125) Human Tagged Lenti ORF Clone

Product data:

Product Type:	Expression Plasmids
Product Name:	SLC22A16 (NM_033125) Human Tagged Lenti ORF Clone
Tag:	Myc-DDK
Symbol:	SLC22A16
Synonyms:	CT2; dJ261K5.1; FLIPT2; HEL-S-18; OAT6; OCT6; OKB1
Mammalian Cell Selection:	None
Vector:	pLenti-C-Myc-DDK (PS100064)
E. coli Selection:	Chloramphenicol (34 ug/mL)
ORF Nucleotide Sequence:	The ORF insert of this clone is exactly the same as(RC207954).
Restriction Sites:	SgfI-MluI
Cloning Scheme:	

Cloning sites used for ORF Shuttling:



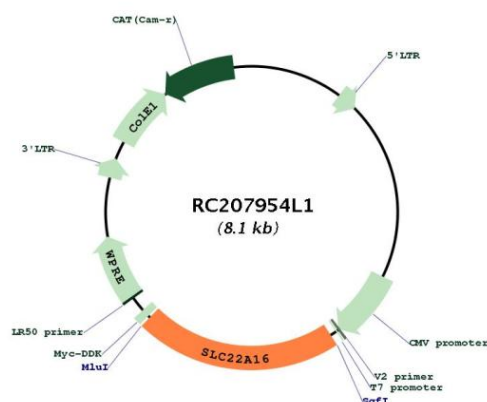
* The last codon before the Stop codon of the ORF.

ACCN:	NM_033125
ORF Size:	1731 bp

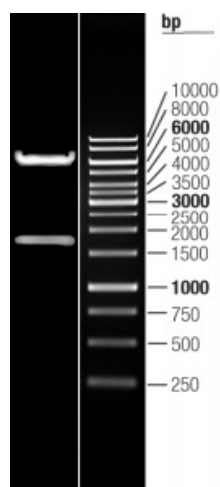


OTI Disclaimer:	The molecular sequence of this clone aligns with the gene accession number as a point of reference only. However, individual transcript sequences of the same gene can differ through naturally occurring variations (e.g. polymorphisms), each with its own valid existence. This clone is substantially in agreement with the reference, but a complete review of all prevailing variants is recommended prior to use. More info
OTI Annotation:	This clone was engineered to express the complete ORF with an expression tag. Expression varies depending on the nature of the gene.
Components:	The ORF clone is ion-exchange column purified and shipped in a 2D barcoded Matrix tube containing 10ug of transfection-ready, dried plasmid DNA (reconstitute with 100 ul of water).
Reconstitution Method:	<ol style="list-style-type: none"> 1. Centrifuge at 5,000xg for 5min. 2. Carefully open the tube and add 100ul of sterile water to dissolve the DNA. 3. Close the tube and incubate for 10 minutes at room temperature. 4. Briefly vortex the tube and then do a quick spin (less than 5000xg) to concentrate the liquid at the bottom. 5. Store the suspended plasmid at -20°C. The DNA is stable for at least one year from date of shipping when stored at -20°C.
Note:	Plasmids are not sterile. For experiments where strict sterility is required, filtration with 0.22um filter is required.
RefSeq:	NM_033125.2
RefSeq Size:	1997 bp
RefSeq ORF:	1734 bp
Locus ID:	85413
UniProt ID:	Q86VW1
Cytogenetics:	6q21-q22.1
Protein Families:	Transmembrane
MW:	64.6 kDa
Gene Summary:	This gene encodes a member of the organic zwitterion transporter protein family which transports carnitine. The encoded protein has also been shown to transport anticancer drugs like bleomycin (PMID: 20037140) successful treatment has been correlated with the level of activity of this transporter in tumor cells. [provided by RefSeq, Dec 2011]

Product images:



Circular map for RC207954L1



Double digestion of RC207954L1 using Sgfl and MluI