

Product datasheet for **RC207953**

Radixin (RDX) (NM_002906) Human Tagged ORF Clone

Product data:

Product Type:	Expression Plasmids
Product Name:	Radixin (RDX) (NM_002906) Human Tagged ORF Clone
Tag:	Myc-DDK
Symbol:	Radixin
Synonyms:	DFNB24
Mammalian Cell Selection:	Neomycin
Vector:	pCMV6-Entry (PS100001)
E. coli Selection:	Kanamycin (25 ug/mL)



[View online »](#)

ORF Nucleotide Sequence:

>RC207953 representing NM_002906
 Red=Cloning site Blue=ORF Green=Tags(s)

TTTTGTAATACGACTCACTATAGGGCGGCCGGAATTCGTCGACTGGATCCGGTACCGAGGAGATCTGCC
 GCC**CGCATCGCC**

ATGCCGAAACCAATCAACGTAAGAGTAACAATGGATGCTGAGCTGGAATTTGCCATTACGCCAATA
 CAACTGGCAAACAACTTTTTGACCAGGTGGTGAACAGTTGGTTTTCGCTGAGGTCTGGTTTTTGGGCT
 GCAGTATGTAGACAGCAAAGTTATTCTACATGGCTTAACTAAATAAAAAGGTAAACACAGCAGGATGTT
 AAAAAAGAGAATCCTTTACAGTTCAAGTTAGAGCTAAATTTCTTCTGAAGATGTTTCTGAGGAATTA
 TTCAAGAAATAACCCAGAGACTCTTCTTCTGCAAGTTAAAGAAGCCATCTTAAATGATGAGATATTTG
 CCCGCCAGAACTGCAGTTCTTTGGCTTCTATGCTGTCCAAGCCAAGTATGGAGATTACAATAAAGAG
 ATTCATAAGCCAGGCTACCTGGTAATGATAGACTCTACCCAGCGTATTGGAACAACAACTAA
 CAAAAGAACAGTGGGAAGAAAGAATACAGAAGTGGCATGAAGAACATAGAGGAATGTTAAGGGAGGATTC
 TATGATGGAATACCTGAAGATTGCACAAGATCTAGAAATGTATGGAGTCAACTATTTTGAATAAAAAAT
 AAAAAAGGAACTGAATTTGGCTAGGTGTTGATGCTTTGGGTCTGAATATTTATGAGCATGACGACAAGT
 TAACACCTAAAAATGGTTTTCCCTGGAGTGAAATCAGAAATATTTCAATTAATGACAAAAAATTTGTTAT
 AAAGCCAATCGACAAAAAGGCACCTGATTTTGTGTTTTATGCACCTCGTCTGAGAATCAATAAGAGGATT
 TTGGCCTTATGTATGGGAAACCTGAACATACATGCGAAGAAGGAAGCCTGATACTATTGAAGTACAAC
 AGATGAAGGCTCAGGCTAGGGAGGAGAAACATCAGAAGCAGTTGGAAAGGGCACAATTAGAGAATGAAAA
 GGAGAAAAGAGAAATAGCAGAAAAGGAAAAGGAAAAGAAATAGAACGTGAAAAGGAAGAGCTAATGGAACGT
 CTAACCAAAATGAAGAGCAGACAATTAAGCTCAGAAAGAACTAGAAGAACAGACTCGAAAAGCTCTAG
 AACTGGTCAAGAACGAAAACGAGCAAAAAGAAGCAAGCAAGTGGAAAAGGAGCGTGCAGCTGCTGA
 AGAGGCAAAGTCTGCCATAGCAAAAACAAGCTGCCGACCAGATGAAGAATCAGGAGCAGCTAGCAGCAGAA
 CTTGCTGAATTCAGTCCAAAGATTGCACTTCTAGAGGAAGCCAAGAAGAAAAGGAAGGAAAGCTACTG
 AGTGGCAACACAAAGCTTTTGCAGCCCAGGAAGACTTGGAAAAGACCAAGAAGAGTTAAAAACTGTGAT
 GTCTGCCCCCCCTCCACCTCCACCACCAGTCATTCTCCAACAGAAAACGAACATGATGAACACGAT
 GAGAATAATGCTGAAGCTAGTGTGAATTATCAATGAAGGGTAAATGAACCATAGAAGCGGGAAGAAC
 GTGTAACCGAAACACAGAAAAATGAGCGTGTAAAGAAGCAACTTCAGGCATTAAGTTCAGAATTAGCCCA
 AGCCAGAGATGAAACCAAGAAAACAAAAATGATGTTCTCATGCTGAGAATGTTAAAGCAGGCCGTGAT
 AAGTACAAGACTCTGCGACAGATTTCGACAAGGCAATACAAGCAGCGTATCGATGAGTTGAAGCAATG

ACGCGTACGCGGCCGCTCGAGCAGAACTCATCTCAGAAGAGGATCTGGCAGCAAATGATATCCTGGATT
 ACAAGGATGACGACGATAAGGTTTAA

Protein Sequence:

>RC207953 representing NM_002906
 Red=Cloning site Green=Tags(s)

MPKPINVRVTTMDAELEFAIQPNTTGKQLFDQVVKTVGLREVWFFGLQYVDSKGYSTWLKLNKKVTQQDV
 KKENPLQFKFRAKFFPEDVSEELIQEITQRLFFLQVKEAILNDEIYCPPETAVLLASYAVQAKYGDYNKE
 IHKPGYLANDRLLPQRVLEQHKLTKEQWEERIQNWHEEHRGMLREDSMMEYLKIAQDLEMYGVNYFEIKN
 KKGTELWLGVDALGLNIYEHDDKLTPIGFPWSEIRNISFNDKKFVIKPIDKKAPDFVFYAPRLRINKRI
 LALCMGNHEL YMRRRKPDTIEVQMQKAQAREEKHQKQLERAQLENEKEKREIAEKEKERIEREKEELMER
 LKQIEEQTIKAQKELLEEQTRKALELDQERKRAKEEAERLEKERRAAEEAKSAIAKQAADQMKNQEQLAAE
 LAEFTAKIALLEEAKKKKEEATEWQHKAFAAQEDLEKTEELKTVM SAPPPPPPPVPIPTENEHDEHD
 ENNAEASAE LSNEGVMNHRSEEEERVETQKNERVKKQLQAL SSELAQARDETKKTQNDVLHAENVKAGRD
 KYKTLRQIRQGNTKQRIDEFEAM

TRTRPLEQKLISEEDLAANDILDYKDDDDKV

Chromatograms:

https://cdn.origene.com/chromatograms/mg2477_e04.zip

Restriction Sites:

Sgfl-Mlul

Cloning Scheme:


ACCN: NM_002906

ORF Size: 1749 bp

OTI Disclaimer: The molecular sequence of this clone aligns with the gene accession number as a point of reference only. However, individual transcript sequences of the same gene can differ through naturally occurring variations (e.g. polymorphisms), each with its own valid existence. This clone is substantially in agreement with the reference, but a complete review of all prevailing variants is recommended prior to use. [More info](#)

OTI Annotation: This clone was engineered to express the complete ORF with an expression tag. Expression varies depending on the nature of the gene.

Components: The ORF clone is ion-exchange column purified and shipped in a 2D barcoded Matrix tube containing 10ug of transfection-ready, dried plasmid DNA (reconstitute with 100 ul of water).

- Reconstitution Method:**
1. Centrifuge at 5,000xg for 5min.
 2. Carefully open the tube and add 100ul of sterile water to dissolve the DNA.
 3. Close the tube and incubate for 10 minutes at room temperature.
 4. Briefly vortex the tube and then do a quick spin (less than 5000xg) to concentrate the liquid at the bottom.
 5. Store the suspended plasmid at -20°C. The DNA is stable for at least one year from date of shipping when stored at -20°C.

RefSeq: [NM_002906.4](#)

RefSeq Size: 4498 bp

RefSeq ORF: 1752 bp

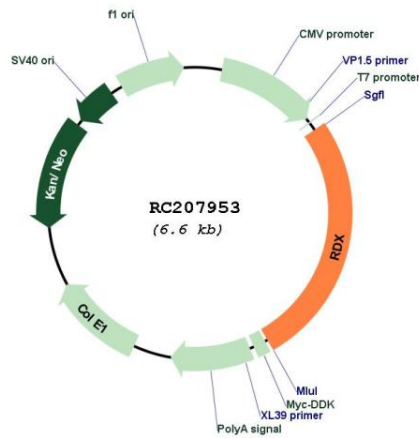
Locus ID: 5962

UniProt ID: [P35241](#)

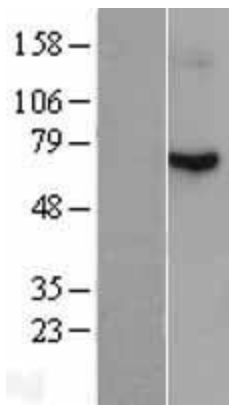
Cytogenetics: 11q22.3

Domains:	B41, ERM
Protein Families:	Druggable Genome
Protein Pathways:	Regulation of actin cytoskeleton
MW:	68.4 kDa
Gene Summary:	Radixin is a cytoskeletal protein that may be important in linking actin to the plasma membrane. It is highly similar in sequence to both ezrin and moesin. The radixin gene has been localized by fluorescence in situ hybridization to 11q23. A truncated version representing a pseudogene (RDXP2) was assigned to Xp21.3. Another pseudogene that seemed to lack introns (RDXP1) was mapped to 11p by Southern and PCR analyses. Multiple alternatively spliced transcript variants encoding different isoforms have been found for this gene. [provided by RefSeq, May 2012]

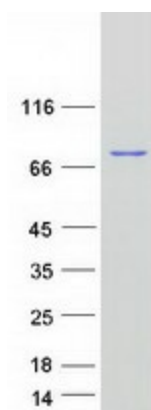
Product images:



Circular map for RC207953



Western blot validation of overexpression lysate (Cat# [LY401020]) using anti-DDK antibody (Cat# [TA50011-100]). Left: Cell lysates from untransfected HEK293T cells; Right: Cell lysates from HEK293T cells transfected with RC207953 using transfection reagent MegaTran 2.0 (Cat# [TT210002]).



Coomassie blue staining of purified RDX protein (Cat# [TP307953]). The protein was produced from HEK293T cells transfected with RDX cDNA clone (Cat# RC207953) using MegaTran 2.0 (Cat# [TT210002]).