

## Product datasheet for **RC207949**

### LRRTM1 (NM\_178839) Human Tagged ORF Clone

#### Product data:

Product Type:	Expression Plasmids
Product Name:	LRRTM1 (NM_178839) Human Tagged ORF Clone
Tag:	Myc-DDK
Symbol:	LRRTM1
Mammalian Cell Selection:	Neomycin
Vector:	pCMV6-Entry (PS100001)
E. coli Selection:	Kanamycin (25 ug/mL)



[View online »](#)

**ORF Nucleotide Sequence:**

>RC207949 ORF sequence  
 Red=Cloning site Blue=ORF Green=Tags(s)

TTTTGTAATACGACTCACTATAGGGCGGCCGGAATTCGTCGACTGGATCCGGTACCGAGGAGATCTGCC  
 GCC**CGCATCGCC**

ATGGATTTCTGTGCTCGGTCTGTCTATACTGGCTGTGAGGAGCCCTCGGGGTGGTCTTGTGTC  
 TGCTGGGGCCTGCTTTAGATGCTGCCGCCGCCAGCGGGTGCCCGAGCTGTCCGGTGCGAGGG  
 GCGGCTGTACTGCGAGGCGCTCAACCTCACGAGGCGCCCAACCTGTCCGGCTGCTGGGCTTG  
 TCCCTGCGCTACAACAGCCTCTCGGAGCTGCGCGCCGGCCAGTTCACGGGGTAAATGCGACTCACGTGGC  
 TCTATCTGGATACAATCACATCTGCTCCGTGCAGGGGACGCCTTTAGAACTGCGCCGAGTTAAGGA  
 ACTCACGTGAGTTCCAACCAGATCACCAACTGCCAACACCACCTCCGGCCCATGCCAACCTGCGC  
 AGCGTGGACTCTCGTACAACAAGCTGCAGGCGCTCGCGCCGACCTCTCCACGGGCTCGGAAGCTCA  
 CCACGCTGCATATGCGGGCCAACGCCATCCAGTTTGTCCCGTGCATCTTCCAGGACTGCCGACGCT  
 CAAGTTTCTCGACATCGGATAACAATCAGCTCAAGAGTCTGGCGCGCAACTTTTCGCCGGCTTGTAAAG  
 CTACCGAGTGCACCTCGAGCACAACGACTTGGTCAAGTGAACCTCCGCCACTTCCCGCCTCATCT  
 CCCTGCACTCGCTCTGCCTGCGGAGGAACAAGGTGCCATTGTGGTCAGCTCGCTGGACTGGGTTTGAA  
 CCTGGAGAAAATGGACTTGTGCGGCAACGAGATCGAGTACATGGAGCCCATGTGTTGAGACCGTGCCG  
 CACCTGCAGTCCCTGCAGCTGGACTCCAACCGCTCACCTACATCGAGCCCGGATCCTCAACTCTTGA  
 AGTCCCTGACAAGCATCACCTGGCCGGGAACCTGTGGGATTGCGGGCGCAACGTGTGTGCCCTAGCCTC  
 GTGGCTCAGCAACTTCCAGGGCGCTACGATGGCAACTGCAGTGCAGCCAGCCGGAGTACGCACAGGGC  
 GAGGACGTCTGGACGCCGTGACGCCTCCACCTGTGCGAGGATGGGGCCGAGCCACCAGCGGCCACC  
 TGCTCTCGGCCGTACCAACCGCAGTGATCTGGGGCCCTGCCAGCTCGGCCACCAGCTCGCGGACGG  
 CGGGGAGGGGCAGCAGCAGCGGCACATTCGAGCCTGCCACCGTGGCTCTTCCAGGCGCGAGCAGCCGAG  
 AACGCCGTGCAGATCCACAAGGTGGTACGCGGCACCATGGCCCTCATCTTCTCCTCATCGTGGTCC  
 TGGTGCTACTGTCTGGAAGTGTTCAGCCAGCCTCAGGCAGCTCAGACAGTGTGTTGTCACGCA  
 GCGCAGGAAGCAAAGCAGAAACAGACCATGCATCAGATGGTGGCATGTCTGCCAGGAATACTACGTT  
 GATTACAAACCGAACACATTGAGGGAGCCCTGGTATCATCAACGAGTATGGCTCGTGTACCTGCCACC  
 AGCAGCCCGGAGGGAATGCGAGGTG

**ACGCGT**ACGCGGCCGCTCGAGCAGAAACTCATCTCAGAAGAGGATCTGGCAGCAAATGATATCTGGATT  
 ACAAGGATGACGACGATAAGGTTTAA

**Protein Sequence:**

>RC207949 protein sequence  
 Red=Cloning site Green=Tags(s)

MDFLLGLCLYWLLRRPSGVVLCLLGACFQMLPAAPSGCPQLCRCEGRLLYCEALNLTEAPHNLSGLLGL  
 SLRYNSLSELRAQFTGLMQLTWLYLDHNHICSVQDAFQKLRRVKELTLSSNQITQLPNTTFRPMPNLR  
 SVDLSYNKLQALAPDLFHGLRKLTLHMRANAIQFVPRIFQDCRSLKFLDIGYNQLKSLARNSFAGLFK  
 LTELHLEHNDLVKVNFAHFPRILSLHSLCLRRNKVAIVVSSLDWVWNLEKMDLSGNEIEYMEPHVFETVP  
 HLQSLQLDSNRLTYIEPRILNSWKSLSITLAGNLWDCGRNVCALASWLSNFQGRYDGNLQCASPEYAQG  
 EDVLDVAYAFHLCEDGAEPSTGHLLSAVTNRSDLGPPASSATTLADGGEGQHDGTFEPATVALPGGEHAE  
 NAVQIHKVVTGTMALIFSFLIVVLVLYVSWKCFPASLRQLRQCFVTQRRKQKQKQTMHQMAAMSAQEYVV  
 DYKPNHIEGALVIINEYGSCTCHQPARECEV

**TR**TRPLEQK**LI**SEEDLAANDILDYKDDDDK**V**

**Chromatograms:**

[https://cdn.origene.com/chromatograms/mk6088\\_e03.zip](https://cdn.origene.com/chromatograms/mk6088_e03.zip)

**Restriction Sites:**

Sgfl-Mlul

**Cloning Scheme:**


**ACCN:** NM\_178839

**ORF Size:** 1566 bp

**OTI Disclaimer:** The molecular sequence of this clone aligns with the gene accession number as a point of reference only. However, individual transcript sequences of the same gene can differ through naturally occurring variations (e.g. polymorphisms), each with its own valid existence. This clone is substantially in agreement with the reference, but a complete review of all prevailing variants is recommended prior to use. [More info](#)

**OTI Annotation:** This clone was engineered to express the complete ORF with an expression tag. Expression varies depending on the nature of the gene.

**Components:** The ORF clone is ion-exchange column purified and shipped in a 2D barcoded Matrix tube containing 10ug of transfection-ready, dried plasmid DNA (reconstitute with 100 ul of water).

- Reconstitution Method:**
1. Centrifuge at 5,000xg for 5min.
  2. Carefully open the tube and add 100ul of sterile water to dissolve the DNA.
  3. Close the tube and incubate for 10 minutes at room temperature.
  4. Briefly vortex the tube and then do a quick spin (less than 5000xg) to concentrate the liquid at the bottom.
  5. Store the suspended plasmid at -20°C. The DNA is stable for at least one year from date of shipping when stored at -20°C.

**RefSeq:** [NM\\_178839.3](#), [NP\\_849161.1](#)

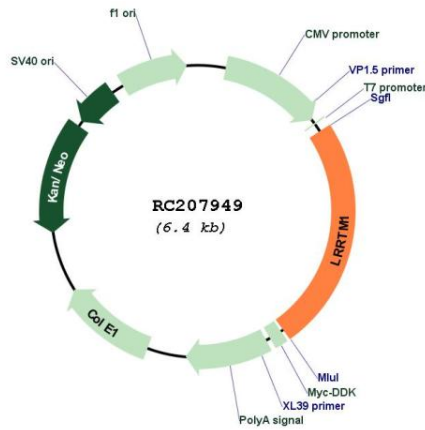
**RefSeq Size:** 2217 bp

**RefSeq ORF:** 1569 bp

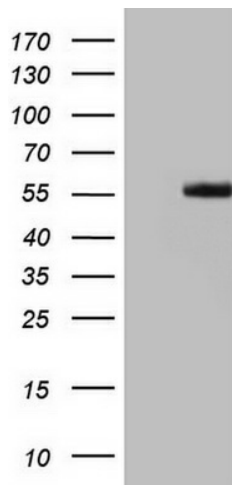
**Locus ID:** 347730

**UniProt ID:** [Q86UE6](#)

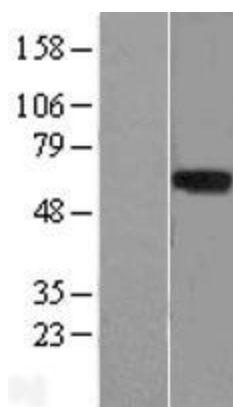
**Cytogenetics:** 2p12  
**Protein Families:** Transmembrane  
**MW:** 58.6 kDa  
**Gene Summary:** Exhibits strong synaptogenic activity, restricted to excitatory presynaptic differentiation, acting at both pre- and postsynaptic level.[UniProtKB/Swiss-Prot Function]

**Product images:**


Circular map for RC207949



HEK293T cells were transfected with the pCMV6-ENTRY control (Cat# [PS100001], Left lane) or pCMV6-ENTRY LRRTM1 (Cat# RC207949, Right lane) cDNA for 48 hrs and lysed. Equivalent amounts of cell lysates (5 ug per lane) were separated by SDS-PAGE and immunoblotted with anti-LRRTM1(Cat# [TA805611]). Positive lysates [LY405855] (100ug) and [LC405855] (20ug) can be purchased separately from OriGene.



Western blot validation of overexpression lysate (Cat# [LY405855]) using anti-DDK antibody (Cat# [TA50011-100]). Left: Cell lysates from untransfected HEK293T cells; Right: Cell lysates from HEK293T cells transfected with RC207949 using transfection reagent MegaTran 2.0 (Cat# [TT210002]).