

## Product datasheet for RC207947

### CD299 (CLEC4M) (NM\_014257) Human Tagged ORF Clone

#### Product data:

Product Type:	Expression Plasmids
Product Name:	CD299 (CLEC4M) (NM_014257) Human Tagged ORF Clone
Tag:	Myc-DDK
Symbol:	CD299
Synonyms:	CD209L; CD299; DC-SIGN2; DC-SIGNR; DCSIGNR; HP10347; L-SIGN; LSIGN
Mammalian Cell Selection:	Neomycin
Vector:	pCMV6-Entry (PS100001)
E. coli Selection:	Kanamycin (25 ug/mL)
ORF Nucleotide Sequence:	>RC207947 ORF sequence Red=Cloning site Blue=ORF Green=Tags(s)

TTTTGTAATACGACTCACTATAGGGCGGCCGGAATTCGTCGACTGGATCCGGTACCGAGGAGATCTGCC  
GCC**CGATCGCC**

ATGAGTGACTCCAAGGAACCAAGGGTGCAGCAGCTGGCCTCCTGGAAGAAGATCCAACAACCAAGTGGCA  
TCAGACTTTTTCCAAGAGACTTTCAATTCAGCAGATACATGGCCACAAGAGCTCTACAGGGTGTCTTGG  
CCATGGCGCCCTGGTGTGCAACTCCTCTCCTTCATGCTCTTGGCTGGGGTCTGGTGGCCATCCTTGTC  
CAAGTGTCCAAGGTCCCCAGCTCCCTAAGTCAGGAACAATCCGAGCAAGACGCAATCTACCAGAACCTGA  
CCCAGCTTAAAGCTGCAGTGGGTGAGCTCTCAGAGAAATCCAAGCTGCAGGAGATCTACCAGGAGCTGAC  
CCAGCTGAAGGCTGCAGTGGGTGAGTTGCCAGAGAAATCCAAGCTGCAGGAGATCTACCAGGAGCTGACC  
CGGCTGAAGGCTGCAGTGGGTGAGTTGCCAGAGAAATCCAAGCTGCAGGAGATCTACCAGGAGCTGACCC  
GGCTGAAGGCTGCAGTGGGTGAGTTGCCAGAGAAATCCAAGCTGCAGGAGATCTACCAGGAGCTGACCCG  
GCTGAAGGCTGCAGTGGGTGAGTTGCCAGAGAAATCCAAGCTGCAGGAGATCTACCAGGAGCTGACCCG  
CTGAAGGCTGCAGTGGGTGAGTTGCCAGAGAAATCCAAGCTGCAGGAGATCTACCAGGAGCTGACCCAGC  
TGAAGGCTGCAGTGGGTGAGTTGCCAGACCAGTCCAAGCAGCAGCAAATCTATCAAGAACTGACCGATTT  
GAAGACTGCATTTGAACGCCTGTGCCGCCACTGTCCAAGGACTGGACATTTTCCAAGGAAACTGTTAC  
TTCATGTCTAACTCCCAGCGAACTGGCAGCAGTCCGTCACCGCTGCCAGGAAGTGAGGGCCAGCTCG  
TCGTAATCAAAAAGTCTGAGGAGCAGAATTCCTACAGCTGCAGACTTCCAGGAGTAACCGCTTCTCCTG  
GATGGGACTTTCAGACCTAAATCAGGAAGGCACGTGGCAATGGGTGGACGGCTCACCTCTGTCAACCAGC  
TTCCAGCGGTAAGTGAACAGTGGAGAACCACAATAGCGGGAATGAAGACTGTGCGGAATTTAGTGGCA  
GTGGCTGGAACGACAATCGATGTGACGTTGACAATTACTGGATCTGCAAAAAGCCCGCAGCCTGTTTCA  
AGACGAA

**ACGGCT**ACGCGGCCGCTCGAGCAGAAACTCATCTCAGAAGAGGATCTGGCAGCAAATGATATCCTGGATT  
ACAAGGATGACGACGATAAGGTTTAA



[View online »](#)



**Reconstitution Method:**

1. Centrifuge at 5,000xg for 5min.
2. Carefully open the tube and add 100ul of sterile water to dissolve the DNA.
3. Close the tube and incubate for 10 minutes at room temperature.
4. Briefly vortex the tube and then do a quick spin (less than 5000xg) to concentrate the liquid at the bottom.
5. Store the suspended plasmid at -20°C. The DNA is stable for at least one year from date of shipping when stored at -20°C.

**Note:** Plasmids are not sterile. For experiments where strict sterility is required, filtration with 0.22um filter is required.

**RefSeq:** [NM\\_014257.5](#)

**RefSeq Size:** 1976 bp

**RefSeq ORF:** 1200 bp

**Locus ID:** 10332

**UniProt ID:** [Q9H2X3](#)

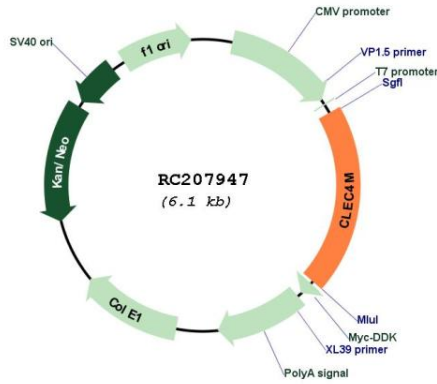
**Cytogenetics:** 19p13.2

**Protein Families:** Druggable Genome, Transmembrane

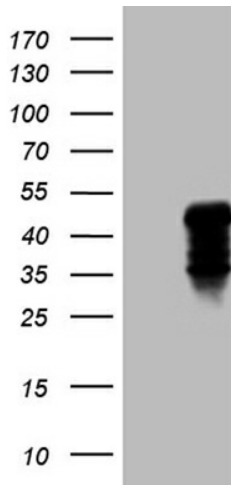
**MW:** 45.4 kDa

**Gene Summary:** This gene encodes a C-type lectin that functions in cell adhesion and pathogen recognition. This receptor recognizes a wide range of evolutionarily divergent pathogens with a large impact on public health, including tuberculosis mycobacteria, and viruses including Ebola, hepatitis C, HIV-1, influenza A, West Nile virus and the SARS-CoV acute respiratory syndrome coronavirus. The protein is organized into four distinct domains: a C-terminal carbohydrate recognition domain, a flexible tandem-repeat neck domain of variable length, a transmembrane region and an N-terminal cytoplasmic domain involved in internalization. This gene is closely related in terms of both sequence and function to a neighboring gene, CD209 (Gene ID: 30835), also known as DC-SIGN. The two genes differ in viral recognition and expression patterns, with this gene showing high expression in endothelial cells of the liver, lymph node and placenta. Polymorphisms in the tandem repeat neck domain are associated with resistance to SARS infection. [provided by RefSeq, May 2020]

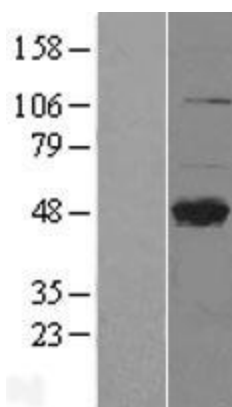
Product images:



Circular map for RC207947



HEK293T cells were transfected with the pCMV6-ENTRY control (Cat# [PS100001], Left lane) or pCMV6-ENTRY CLEC4M (Cat# RC207947, Right lane) cDNA for 48 hrs and lysed. Equivalent amounts of cell lysates (5 ug per lane) were separated by SDS-PAGE and immunoblotted with anti-CLEC4M (Cat# [TA810067])(1:2000). Positive lysates [LY402300] (100ug) and [LC402300] (20ug) can be purchased separately from OriGene.



Western blot validation of overexpression lysate (Cat# [LY403743]) using anti-DDK antibody (Cat# [TA50011-100]). Left: Cell lysates from untransfected HEK293T cells; Right: Cell lysates from HEK293T cells transfected with [RC211716] using transfection reagent MegaTran 2.0 (Cat# [TT210002]).



Coomassie blue staining of purified CLEC4M protein (Cat# [TP307947]). The protein was produced from HEK293T cells transfected with CLEC4M cDNA clone (Cat# RC207947) using MegaTran 2.0 (Cat# [TT210002]).