

## Product datasheet for **RC207936**

### **APLF (NM\_173545) Human Tagged ORF Clone**

#### **Product data:**

Product Type:	Expression Plasmids
Product Name:	APLF (NM_173545) Human Tagged ORF Clone
Tag:	Myc-DDK
Symbol:	APLF
Synonyms:	APFL; C2orf13; PALF; Xip1; ZCCHH1
Mammalian Cell Selection:	Neomycin
Vector:	pCMV6-Entry (PS100001)
E. coli Selection:	Kanamycin (25 ug/mL)



[View online »](#)

**ORF Nucleotide Sequence:**

>RC207936 ORF sequence  
 Red=Cloning site Blue=ORF Green=Tags(s)

TTTTGTAATACGACTCACTATAGGGCGGCCGGGAATTCGTCGACTGGATCCGGTACCGAGGAGATCTGCC  
 GCC**CGCATCGCC**

ATGTCGGGGGCTTCGAGCTGCAGCCGCGGGACGCGCGTCCCGGGTGGCCCTGGCGCCCGGGAGACGG  
 TGATCGGCCGCGGCCGCTGCTGGGAATAACAGACAAGAGAGTATCCAGAAGACATGCCATTCTTGAGGT  
 GGCAGGTGGTCAGCTGCGAATCAAACCGATACACACAAATCCATGTTTTTACCAGTCTTCAGAGAAGAGT  
 CAGCTCTTACCATTGAAGCCAAATCTATGGTGCTATTTGAATCCTGGAGACAGCTTTTCTTTGTTAGTTG  
 ACAAATACATTTTCCGATTCTCTCTATACCCTCTGAAGTGAAATGCAATGTACCTTAAGAAACAGTCA  
 AGTGCTTGATGAAGATAATATATTGAATGAAACACCAAAATCCCCGTGATTAATTTACCTCATGAGACT  
 ACTGGTGCCTCACAACCTGGAAGGAAGCACAGAAATAGCCAAGACCAGATGACTCCACAAATAGTGTGT  
 CTTTCTAGTGAAAATAGAGACTGCAATAAGCAGCAGCCAATCCTTGCCGAGAGGAAAAGAATCCTTCC  
 AACTTGGATGTTAGCAGAACATTTAAGTGATCAAACCTTTCAGTACCAGCAATCAGTGGAGGTAATGTA  
 ATCCAGGGAAGTGAAAAGAAGAAATCTGCAAAGATAAATCCAGCTAAACACAACCCAGCAAGGAAGAA  
 GGCAATTAATTTTCATCAGGAAGTTCAGAAAATACATCAGCAGAACAAGACACAGGAGAAGAGTGCAAAAA  
 TACTGATCAGGAAGAGTCTACCATTTTCATCCAAGGAAATGCCACAATCATTTTCTGCAATCACATTAAGT  
 AACACAGAGATGAATAATATTAAGACTAATGCACAGAGAAAACAACTTCCAATAGAGGAAGTGGTAAAG  
 TTTCTAAACATAAAATTTGCCACTAAAAGAACACCACATAAAGAAGATGAGGCAATGAGCTGTTCTGAAA  
 TTGTTTCGAGTGCCAGGGCGACTCACTTCAGGATGAGTCTCAAGGGTCTCATTCTGAGTCCAGCTTAAT  
 CCCTCCAATCCTGAAACTTTGCATGCAAAGGCAACTGATTCAGTCTACAAGGTTCTGAAGGAAACAAGG  
 TCAAGAGGACATCCTGCATGTATGGGGCAAATGCTATAGGAAGAATCCTGTTTCAATTTTCAACATTTT  
 CCATCCTGGTGATAGTGATTATGGAGGTGTACAATCGTGGGCCAAGATGAGACTGATGACCGGCCTGAA  
 TGTCCTATAGGACCATCCTGTTATAGGAAGAATCCCCAGCACAAGATAGAATATAGACATAATACGCTTC  
 CAGTGAGAAAATGTTTATAGATGAAGATAATGATAATGTTGGGCAACCCAATGAGTATGACCTGAACGACAG  
 CTTTCTAGATGATGAGGAAGAAGACTATGAGCCAACAGATGAAGATTCTGACTGGGAACAGGAAAGGAA  
 GATGAAGAGAAGGAAGATGTGGAAGAGCTTTTGAAGAAGCAAAAAGGTTTATGAAAAGAAA

**ACGCGT**ACGCGGCCGCTCGAGCAGAAACTCATCTCAGAAGAGGATCTGGCAGCAATGATATCCTGGATT  
 ACAAGGATGACGACGATAAGGTTTAA

**Protein Sequence:**

>RC207936 protein sequence  
 Red=Cloning site Green=Tags(s)

MSGGFELQPRDGGPRVALAPGETVIGRPLLGITDKRVSRRHAILEVAGGQLRIKPIHTNPCFYQSSEKS  
 QLLPLKPNLWCYLNPGDSFLLVDKYIFRILSIPSEVEMQCTLRNSQVLDEDNILNETPKSPVINLPHET  
 TGASQLEGSTEIAKTQMTPTNSVSFLGENRDCNKQPILAEKRILPTWMLAEHLSQNLVPAISGGNV  
 IQGSGKEEICKDKSQLNTTQQGRRQLISSGSENTSAEQDTGEECKNTDQEEESTISSKEMPQSFSAITLS  
 NTEMNLIKTNQRNKLPTEELGKVSCHKIATKRTPHKEDEAMSCSENCSSAQGDSLQDESQGSSESSN  
 PSNPETLHAKATDSVLQGSEGNKVKRTSCMYGANCYRKNPVHFQHF SHPGSDYGGVQIVGQDETDPRPE  
 CPYGPSCYRKNPQHKIEYRHNTLPVRNVLDEDNDNVGQPNEDLNDNFLDDEEEDYEPTDESDWEPEGKE  
 DEEKEDVEELLKEAKRFMKRK

**TRTRPLEQKLI**SEEDLAANDILDYKDDDDKV

**Chromatograms:**

[https://cdn.origene.com/chromatograms/mk6343\\_h09.zip](https://cdn.origene.com/chromatograms/mk6343_h09.zip)

**Restriction Sites:**

Sgfl-Mlul

**Cloning Scheme:**


**ACCN:** NM\_173545

**ORF Size:** 1533 bp

**OTI Disclaimer:** The molecular sequence of this clone aligns with the gene accession number as a point of reference only. However, individual transcript sequences of the same gene can differ through naturally occurring variations (e.g. polymorphisms), each with its own valid existence. This clone is substantially in agreement with the reference, but a complete review of all prevailing variants is recommended prior to use. [More info](#)

**OTI Annotation:** This clone was engineered to express the complete ORF with an expression tag. Expression varies depending on the nature of the gene.

**Components:** The ORF clone is ion-exchange column purified and shipped in a 2D barcoded Matrix tube containing 10ug of transfection-ready, dried plasmid DNA (reconstitute with 100 ul of water).

**Reconstitution Method:**

1. Centrifuge at 5,000xg for 5min.
2. Carefully open the tube and add 100ul of sterile water to dissolve the DNA.
3. Close the tube and incubate for 10 minutes at room temperature.
4. Briefly vortex the tube and then do a quick spin (less than 5000xg) to concentrate the liquid at the bottom.
5. Store the suspended plasmid at -20°C. The DNA is stable for at least one year from date of shipping when stored at -20°C.

**RefSeq:** [NM\\_173545.3](#)

**RefSeq Size:** 3869 bp

**RefSeq ORF:** 1536 bp

**Locus ID:** 200558

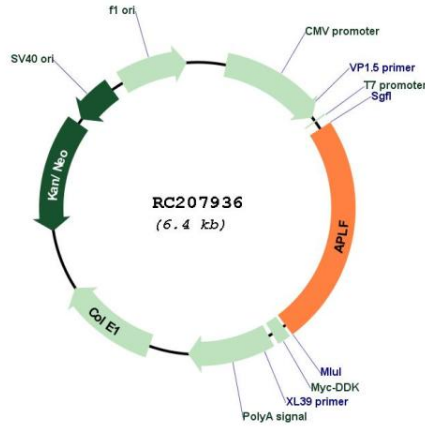
**UniProt ID:** [Q8IW19](#)

**Cytogenetics:** 2p13.3

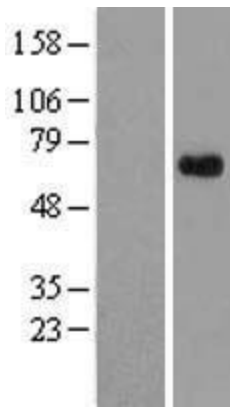
**MW:** 57 kDa

**Gene Summary:** C2ORF13 is a component of the cellular response to chromosomal DNA single- and double-strand breaks (Iles et al., 2007 [PubMed 17353262]).[supplied by OMIM, Mar 2008]

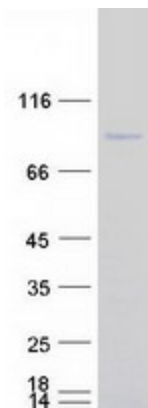
**Product images:**



Circular map for RC207936



Western blot validation of overexpression lysate (Cat# [LY406456]) using anti-DDK antibody (Cat# [TA50011-100]). Left: Cell lysates from untransfected HEK293T cells; Right: Cell lysates from HEK293T cells transfected with RC207936 using transfection reagent MegaTran 2.0 (Cat# [TT210002]).



Coomassie blue staining of purified APLF protein (Cat# [TP307936]). The protein was produced from HEK293T cells transfected with APLF cDNA clone (Cat# RC207936) using MegaTran 2.0 (Cat# [TT210002]).