

## Product datasheet for **RC207935**

### **KIAA1586 (NM\_020931) Human Tagged ORF Clone**

#### **Product data:**

Product Type:	Expression Plasmids
Product Name:	KIAA1586 (NM_020931) Human Tagged ORF Clone
Tag:	Myc-DDK
Symbol:	KIAA1586
Mammalian Cell Selection:	Neomycin
Vector:	pCMV6-Entry (PS100001)
E. coli Selection:	Kanamycin (25 ug/mL)



[View online »](#)

ORF Nucleotide  
Sequence:

>RC207935 ORF sequence  
Red=Cloning site Blue=ORF Green=Tags(s)

TTTTGTAATACGACTCACTATAGGGCGGCCGGGAATTCGTCGACTGGATCCGGTACCGAGGAGATCTGCC  
GCC**CGCATCGCC**

ATGGGAGACCCGGGGTCGAAATATAGAATCTGTCCCTCCAGCTGGCCCTGAGGCATCTGAGTCAACAA  
CGGATGAAAAATGAAGACGACATTCAGTTTGTCACTGAAGGACCATCGAGACCTGTTCTTGAATACATCGA  
TCTGGTCTGTGGTGATGATGAAAACCTAGCGCCTATTATAGTGATATTCTGTTTCTAAAAATGCCAAAA  
CGACAGGGTGATTTTTTGCATTTTTTAAATGTGAAGAAGGTGAAAACAGACACAGAAAAATGAAGTGA  
GCAAAAAATCACTGCAGATTGTCTAAGGCAAGGAACCACATTCGAGTATATTGAACAACCAATCATTGA  
AGAAAAGCCATCACTTTCATCAAAGAAAGAAATAGATAATCTTGTGCTTCCAGATTGTTGGAATGAAAA  
CAAGCATTTATGTTTACAGAACAATACAAATGGCTTGAATAAAAAGAAGGTAAATTAGGATGTAAGGATT  
GTTCCAGCAGTTCCGCATTTGGGATCGAAAGCAGAAAAGCATGTCCATGTGTCCAAGGAATGGATTGCATA  
TTTAGTAACCCCTAATGGCAGTAATAAACTACTAGGCAAGCTTCTCTACGAAAAAAAATTAGGGAACAT  
GATGTTTTCTAAAGCCCATGGTAAAAATTCAGGATTTGTTAAAGGAATCAACTAATGATTCAATTTGTAATT  
TAGTGATAAAACAAAATAATAAAAAATTTGATGCTACTGTAAAAGTTTTCAACTGTTTACAGTTTAGT  
AAAACATAACAGACCTTTATCTGATATTGAGGGGGCAAGAGAATTACAGGAAAAAATGGAGAGGTAAT  
TGTTTAAATACACGTTACAGTGCAACAAGAATAGCAGAACATATTGCAAAAAGAAATGAAGATGAAGATAT  
TTAAGAATATTATAGAAGAGAATGCCAAAATCTGTATCATAATTGATGAGGCATCTACAGTTTCAAAGAA  
AACCACCCTAGTGATTTATCTCCAGTGCAAAATCAGTCAGCTCCTGCACCTGTTATGTTATTTGTGGCT  
TTAAAAGAAATGGTGTCAACTATAGCAGAGTGTATTGTCAATACATTATGACTACTTTAAATGATGTG  
GTTTTACAAATGAATATTTGAAAGCAAATTTAATTGCATTTTGTCTGATGGTGCTAATACAATCCTGGG  
AAGAAAAGTCTGGAGTAGCTACAAAATTTAGAAAATTTTCTGAAATCATCATTTTGAAGTGTAAAAAT  
CATCGATTACAATTGTCCTTGTGATTCTATATCCGAAATAAAACAAATTAATCATTTAAAAATATTTA  
TTGATAAAATTTATTCTATTTATCATCAACCTAATAAAAAATCAAACCAAGCTTCTAGGAACTGTAGCTAA  
AGAAGTGAAGTGAAGTATTTAAAAATTTGGTCGAGTAATGGGACCAAGATGGGCGGCATGTAGTTTACAA  
GCTGCTACTGCTGTATGGCATGCATATCCTATATTATATATGCATTTTCTCATTCTTACTCTGGTTTGG  
CGAAGAGATTAGCTAACATTAATTTCTTACAAGACCTTGCTTTAATGATTGACATTCTTGAAGAATTTTC  
AGTACTTTCAACTGCATTACAGTCAAGATCAACTAATATTAAGAAAGCACAAAAATGATCAAACGTACC  
ATAAGAGCTTTGAAAAATTTAAAAATTTGGTACTGGAAAGTATGAATCTCAAATTTGAAGATTTGATCAAGT  
CAGATAAGTTTAAAGATATTCCATTTAATAAAAACAATAAATTTAATGCTCTTCTAGGAGTATATTACT  
AGACAATAATAATTCAGCACATGAACCTACGCCTTTTATCTGACAGAAACCATGAAGATATTTTTAATTAC  
TTTGATTTGCTGGAACTTCCACATGGCCTTATGAAGAAATAACTTCACCATGGATAGCTGGTGAAAAAA  
CATTATTTCAATTTGTGTAATAATTTAAAAATGAAGTTGATTTGAATGATTTTCCGGGAATTTGTAATAA  
TAATATAAAATCAAACAATGTTTCAATTCCTACAACATATACAAAGCTAAAAAGATAGTTAGCACCATT  
GCAATCAATAGTGCTGAAGCTGAAAGGGGTTTCAATTTAATGAACATAATTTGTACAAGGGTGAGAAATA  
GTTTAAACAATAGATCATGTATCAGATTTAATGACAATAAATTTACTGGGAAAGAATTAGCAGATTGGGA  
TGCAACACCGTTTGTAAAATCTTGGTCAAATTTGCAACACAGGTTGGCTACAGATACAAGAGTTCCGGCAA  
AAGTCAACAAAAGTCTTCCATGAGAATCAATTGGCTATATGGAACCTAAAA

**ACGCGT**ACGCGGCCGCTCGAGCAGAACTCATCTCAGAAGAGGATCTGGCAGCAATGATATCCTGGATT  
ACAAGGATGACGACGATAAGGTTTAA

**Protein Sequence:** >RC207935 protein sequence  
Red=Cloning site Green=Tags(s)

MGDPGSEIIESVPPAGPEASESTTDENEDDIQFVSEGPSRPVLEYIDL VCGDDENPSAYYSDILFPKMPK  
RQGDFLHFLNVKKVKTDTENNEVSKNHCR LSKAKEPHFEYIEQPIIEEKPSLSSKKEIDNLVLPDCWNEK  
QAFMFTEQYKWL EIKEGKLGCKDCSAVRHLGSKAEKHVHVSKEWIAYL VTPNGSNKTRQASLRKKIREH  
DYSKAHGKI QDLLKESTNDSICNLVHKQNNKNIDATVKVFNTVYSLVKHNRPLSDIEGARELQEKNGEVN  
CLNTRYSATRIA EHI AKEMKMKIFKNII EENAKICII IDEASTVSKTTLVIY LQCTIQSAPAPVMLFVA  
LKELVSTIAECIVNTLLTTLNDCGFTNEY LKANLIAFCSDGANTILGRKSGVATKLL ENFPEII IWNCLN  
HRLQLSLDD SISEIKQINHLKIFIDKIYSIYHQPNKNQTKLLGTVAKELETEI I KIGRVMGPRWAACSLQ  
AATAVWHAYPIL YMHFSHSY SGLAKRLANINFLQDLALMIDILEEFSVLSTALQSRSTNIKKAQKLIKRT  
IRALENLKIGTGKYESQIEDLIKSDKFKDIPFNKNNKFNALPR SILLDNIIQHMNLRLLSDRNHEDIFNY  
FDLLEPSTWPYEEITSPW IAGEKTLFHLCKILKYEVDL NDFREFVNNNIKSNNSIPTTIYKAKKIVSTI  
AINSAAEERGFNLMNIICTRV RNSLTIDHVS DLM TINLLGKELADWDATPFVKSWSN CNHRLATDTRVRQ  
KSTKVFHENQLAIWNLK

TRTRPLEQKLI SEEDLAANDILDYKDDDDKV

**Chromatograms:** [https://cdn.origene.com/chromatograms/mk6343\\_d07.zip](https://cdn.origene.com/chromatograms/mk6343_d07.zip)

**Restriction Sites:** Sgfl-Mlul

**Cloning Scheme:**


**ACCN:** NM\_020931

**ORF Size:** 2361 bp

**OTI Disclaimer:** The molecular sequence of this clone aligns with the gene accession number as a point of reference only. However, individual transcript sequences of the same gene can differ through naturally occurring variations (e.g. polymorphisms), each with its own valid existence. This clone is substantially in agreement with the reference, but a complete review of all prevailing variants is recommended prior to use. [More info](#)

**OTI Annotation:** This clone was engineered to express the complete ORF with an expression tag. Expression varies depending on the nature of the gene.

**Components:** The ORF clone is ion-exchange column purified and shipped in a 2D barcoded Matrix tube containing 10ug of transfection-ready, dried plasmid DNA (reconstitute with 100 ul of water).

**Reconstitution Method:**

1. Centrifuge at 5,000xg for 5min.
2. Carefully open the tube and add 100ul of sterile water to dissolve the DNA.
3. Close the tube and incubate for 10 minutes at room temperature.
4. Briefly vortex the tube and then do a quick spin (less than 5000xg) to concentrate the liquid at the bottom.
5. Store the suspended plasmid at -20°C. The DNA is stable for at least one year from date of shipping when stored at -20°C.

**RefSeq:** [NM\\_020931.4](#)

**RefSeq Size:** 2964 bp

**RefSeq ORF:** 2364 bp

**Locus ID:** 57691

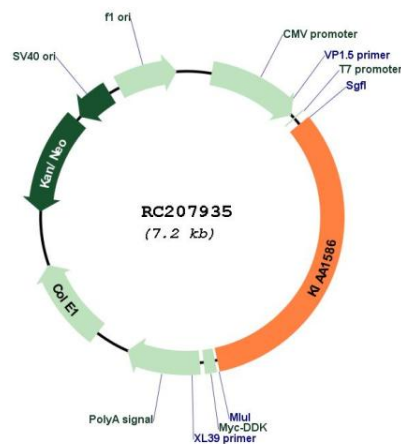
**UniProt ID:** [Q9HCI6](#)

**Cytogenetics:** 6p12.1

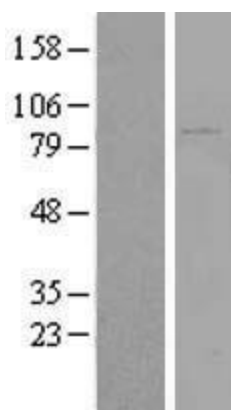
**MW:** 89.7 kDa

**Gene Summary:** E3 SUMO-protein ligase; facilitates UBE2I/UBC9-mediated SUMO2 modification of target proteins (PubMed:26524493).[UniProtKB/Swiss-Prot Function]

### Product images:



Circular map for RC207935



Western blot validation of overexpression lysate (Cat# [LY412227]) using anti-DDK antibody (Cat# [TA50011-100]). Left: Cell lysates from untransfected HEK293T cells; Right: Cell lysates from HEK293T cells transfected with RC207935 using transfection reagent MegaTran 2.0 (Cat# [TT210002]).