

Product datasheet for **RC207932**

IGJ (JCHAIN) (NM_144646) Human Tagged ORF Clone

Product data:

Product Type: Expression Plasmids
Product Name: IGJ (JCHAIN) (NM_144646) Human Tagged ORF Clone
Tag: Myc-DDK
Symbol: JCHAIN
Synonyms: IGCJ; IGJ; JCH
Mammalian Cell Selection: Neomycin
Vector: pCMV6-Entry (PS100001)
E. coli Selection: Kanamycin (25 ug/mL)
ORF Nucleotide Sequence: >RC207932 ORF sequence
Red=Cloning site Blue=ORF Green=Tags(s)

TTTTGTAATACGACTCACTATAGGGCGGCCGGAATTCGTCGACTGGATCCGGTACCGAGGAGATCTGCC
GCC**CGATCGCC**

ATGAAGAACCATTGCTTTTCTGGGGAGTCTGGCGGTTTTTATTAAGGCTGTTTCATGTAAAGCCCAAG
AAGATGAAAGGATTGTTCTTGTGACAACAAATGTAAGTGTGCCCGGATTACTCCAGGATCATCCGTTT
TTCCGAAGATCCTAATGAGGACATTGTGGAGAGAAACATCCGAATTATTGTTCTCTGAACAACAGGGAG
AATATCTCTGATCCACCTCACCATTGAGAACCAGATTTGTGTACCATTTGTCTGACCTCTGAAAAAT
GTGATCCTACAGAAGTGGAGCTGGATAATCAGATAGTTACTGCTACCCAGAGCAATATCTGTGATGAAGA
CAGTGCTACAGAGACCTGCTACACTTATGACAGAAACAAGTGTACACAGCTGTGGTCCCACTCGTATAT
GGTGGTGAGACCAAAATGGTGAAACAGCCTTAACCCAGATGCCTGCTATCCTGAC

ACGCGTACGCGGCCGCTCGAGCAGAACTCATCTCAGAAGAGGATCTGGCAGCAAATGATATCCTGGATT
ACAAGGATGACGACGATAAGGTTTAA

Protein Sequence: >RC207932 protein sequence
Red=Cloning site Green=Tags(s)
MKNHLLFWGVLAVFIKAVHVKAQEDERIVLVDNKCKCARITSRIIRSSDPNEDIVERNIRIIVPLNNRE
NISDPTSPLRTRFVYHLSDLCKKCDPTEVELDNQIVTATQSNICDEDSATETCYTYDRNKCYTAVVPLVY
GGETKMOVETALPDACYPD

TRTRPLEQKLISEEDLAANDILDYKDDDDKV

Chromatograms: https://cdn.origene.com/chromatograms/mk6022_c02.zip



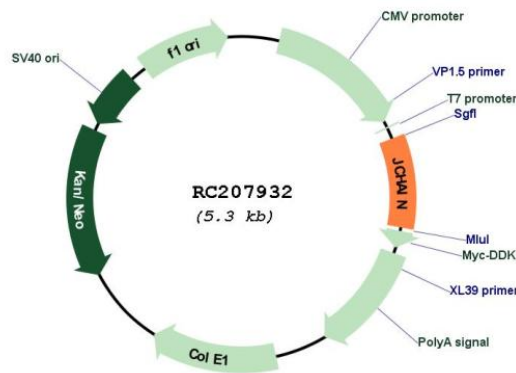
[View online >](#)

Restriction Sites: SgfI-MluI

Cloning Scheme:



Plasmid Map:



ACCN: NM_144646

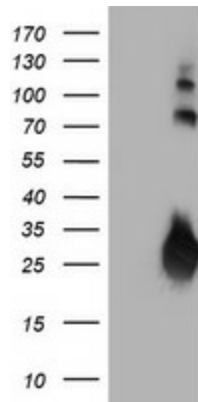
ORF Size: 477 bp

OTI Disclaimer: The molecular sequence of this clone aligns with the gene accession number as a point of reference only. However, individual transcript sequences of the same gene can differ through naturally occurring variations (e.g. polymorphisms), each with its own valid existence. This clone is substantially in agreement with the reference, but a complete review of all prevailing variants is recommended prior to use. [More info](#)

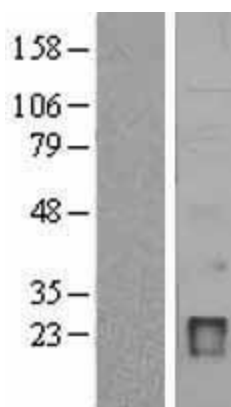
OTI Annotation: This clone was engineered to express the complete ORF with an expression tag. Expression varies depending on the nature of the gene.

Components:	The ORF clone is ion-exchange column purified and shipped in a 2D barcoded Matrix tube containing 10ug of transfection-ready, dried plasmid DNA (reconstitute with 100 ul of water).
Reconstitution Method:	<ol style="list-style-type: none">1. Centrifuge at 5,000xg for 5min.2. Carefully open the tube and add 100ul of sterile water to dissolve the DNA.3. Close the tube and incubate for 10 minutes at room temperature.4. Briefly vortex the tube and then do a quick spin (less than 5000xg) to concentrate the liquid at the bottom.5. Store the suspended plasmid at -20°C. The DNA is stable for at least one year from date of shipping when stored at -20°C.
RefSeq:	NM_144646.4
RefSeq Size:	1413 bp
RefSeq ORF:	480 bp
Locus ID:	3512
UniProt ID:	P01591
Cytogenetics:	4q13.3
MW:	18.1 kDa
Gene Summary:	Serves to link two monomer units of either IgM or IgA. In the case of IgM, the J chain-jointed dimer is a nucleating unit for the IgM pentamer, and in the case of IgA it induces larger polymers. It also help to bind these immunoglobulins to secretory component. [UniProtKB/Swiss-Prot Function]

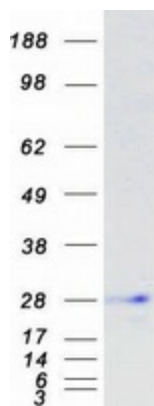
Product images:



HEK293T cells were transfected with the pCMV6-ENTRY control (Cat# [PS100001], Left lane) or pCMV6-ENTRY IGJ (Cat# RC207932, Right lane) cDNA for 48 hrs and lysed. Equivalent amounts of cell lysates (5 ug per lane) were separated by SDS-PAGE and immunoblotted with anti-IGJ (Cat# [TA504173]). Positive lysates [LY403400] (100ug) and [LC403400] (20ug) can be purchased separately from OriGene.



Western blot validation of overexpression lysate (Cat# [LY403400]) using anti-DDK antibody (Cat# [TA50011-100]). Left: Cell lysates from untransfected HEK293T cells; Right: Cell lysates from HEK293T cells transfected with RC207932 using transfection reagent MegaTran 2.0 (Cat# [TT210002]).



Coomassie blue staining of purified JCHAIN protein (Cat# [TP307932]). The protein was produced from HEK293T cells transfected with JCHAIN cDNA clone (Cat# RC207932) using MegaTran 2.0 (Cat# [TT210002]).