

## Product datasheet for **RC207926**

### **PASD5 (NPAS1) (NM\_002517) Human Tagged ORF Clone**

#### **Product data:**

Product Type:	Expression Plasmids
Product Name:	PASD5 (NPAS1) (NM_002517) Human Tagged ORF Clone
Tag:	Myc-DDK
Symbol:	PASD5
Synonyms:	bHLHe11; MOP5; PASD5
Mammalian Cell Selection:	Neomycin
Vector:	pCMV6-Entry (PS100001)
E. coli Selection:	Kanamycin (25 ug/mL)



[View online »](#)

**ORF Nucleotide Sequence:**

>RC207926 ORF sequence  
 Red=Cloning site Blue=ORF Green=Tags(s)

TTTTGTAATACGACTCACTATAGGGCGGCCGGAATTCGTCGACTGGATCCGGTACCGAGGAGATCTGCC  
 GCCGCGATCGCC

ATGGCGGCCCTATCCCGCAGTGGCGCGGAAGCGAGGTCAAATGCGTGGGAGCCGCGGCCACGC  
 TCCCTGGGACTTCTACCCGGGCTGATGGTCAAGGCGCCGTCGGACCGTGCCTGCAGGCGCAGCGCAA  
 GGAGAAGTCCCGAACGCGGCGCGCTCGCGGCGCGGAAGGAGAACCTGGAGTTCTTCGAGCTGGCCAAG  
 CTTCTCCCGCTGCCCGCGCCATCTCCAGCCAGCTGGACAAGGCTTCCATCGTGCCTCAGCGTCACT  
 ACCTCCGCTGCGCCGGTTCGCCCTCTGGGGCGCCGCTGGGGCTGAGAGCCGCGGGGCCGCGCAGC  
 TGGCCTCGCCCCAGGCCGCGGCCCGCAGCGCTGGTCTCGAAGTCTTCGAGCAGCACCTGGGAGGT  
 CACATCTGCAGTCCCTGGATGGCTTTGTGTTGCTTGAACCAGGAAGGAAAATTCCTCTACATCTCAG  
 AGACAGTCTCCATCTATCTGGTCTCTCACAGGTGGAGATGACGGGCAGCAGCGTCTTCGACTACATTCA  
 CCCTGGGACCACTCAGAGGTGCTGGAGCAACTGGGGCTGCGGACGCCGACGCCCGGCCCAACCCCG  
 CCCTCCGTCTCCTCTTCTCCTCTTCTTCTTCTCGCTTGAGATACCCCGAGATCGAGGCCAGCCTCA  
 CCAAGGTGCCCCCTCCTCCCTGGTCCAGGAGCGCTCCTTCTTTGTCCGATGAAATCCACGCTCACAA  
 GAGGGGCTGCACGTCAGGCTCAGGGTACAAGGTATCCACGTCGACTGGGCGCCTTCGGGCCACGCC  
 CTGGGCCTTGTGGCCCTCGGGCACACGTTGCCCGGCCCGCCCTGGTGGAGCTGCCACTCCATGGACACA  
 TGATCGTCTTCCGTCTCAGCCTGGTCTCACCATCCTTGCTTGTGAGAGCAGAGTCAGCGACACATGGA  
 CCTGGGGCCCTCAGAGCTGGTGGCCGAGCTGCTACAGTTTGTCCACGGACAGGACGCCACGAGGATC  
 CGCCAGAGCCACGTGGACTTGTGGACAAGGTCAGGTGATGACTGGTTACTACCGTTGGCTGCAGCGTG  
 CGGGGGCTTGTGTGGCTGCAGTCTGTGGCCACAGTGGTGGGAGCGGGAAGAGCCCGGGGACCA  
 TGTGCTTTGGGTAGCCAGTGTCTCAGCAAGCGAGGTTGGCCAACTCCTTTGGATGCCTTCCAGCTT  
 CCAGCCAGCGTGGCCTGTGAGGAGCATCCAGCCGCGGGCCAGAGCCACAGAGCCGAGCCTCCGACGG  
 AAGGGAAGCAGGCTGCCCGAGGAGAAGCAGGCCCCCAGACCCAGGGCAAACGCATCAAAGTGGAGCC  
 CGGCCCGAGGAAACCAAGGCTCCGAGGACAGTGGCGACGAGGATCCCTCCAGCCACCCGGCCACACCG  
 AGGCCCGAGTTACCTCTGTATCCGGCAGGGTCTGAAGCAGGATCCGGTGCAGGCTGGGGCTGG  
 CGCCTCCCGGGGACCCCGCCACCCTCTGCACGCGGGCTTCTGCCCGCGTGGTGCAGGCTGTG  
 CACACCCGGCACCATCCGCTACGGCCCCGCGGAGCTGGGCTGGTGTACCCGCACCTGCAGAGGCTGGT  
 CCGGGCCCGCGCTCCCGGAGGCTTTTACCCGCCCTGGGCTGCCCTACCCGGGGCCCGGGGACCA  
 GGCTGCCCGGAAGGGGAC

ACGCGTACGCGGCGGCTCGAGCAGAACTCATCTCAGAAGAGGATCTGGCAGCAAATGATATCCTGGATT  
 ACAAGGATGACGACGATAAGGTTTAA

**Protein Sequence:**

>RC207926 protein sequence  
 Red=Cloning site Green=Tags(s)

MAAPYPGSGGGSEVKCVGGRGASVPWDFLPGLMVKAPSGPCLQAQRKEKSRNAARSRRGKENLEFFELAK  
 LLPLPGAISSQLDKASIVRLSVTYLRLRRFAALGAPPWGLRAAGPPAGLAPGRRGPAALVSEVFEQHLGG  
 HILQSLDGFVFNQEGKFLYISETVSIYGLSQVEMTGSSVFDYIHPGDHSEVLEQLGLRTPTPGPPTP  
 PSVSSSSSSSLADTPEIEASLTKVPPSSLVQERSFFVRMKSTLTKRGLHVKASGYKVIHVTGRLRAHA  
 LGLVALGHTLPPAPLAELPLHGHMIVFRLSLGLTILACESRVSDHMDLGPSELVGRSCYQFVHGQDTRI  
 RQSHVDLLDKGQVMTGYRQLRAGGFVWLQSVATVAGSGKSPGEHHVLWVSHVLQAEGGQTPLDAFQL  
 PASVACEEASSPPEPEPEPTTEGKQAAPAEAPQTQKRIKVEPGPRETKGSEDSGDEDPSSHPATP  
 RPEFTSVIRAGVLKQDPVRPWGLAPPDPPPTLLHAGFLPPVVRGLCTPGTIRYGPaelGLVYPHLQRLG  
 PGPALPEAFYPPPLGLPYPGAGTRLPRKGD

TRTRPLEQKLISEEDLAANDILDYKDDDDKV

**Chromatograms:**

[https://cdn.origene.com/chromatograms/mk6279\\_a06.zip](https://cdn.origene.com/chromatograms/mk6279_a06.zip)

Restriction Sites: SgfI-MluI

Cloning Scheme:



ACCN: NM\_002517

ORF Size: 1770 bp

OTI Disclaimer: The molecular sequence of this clone aligns with the gene accession number as a point of reference only. However, individual transcript sequences of the same gene can differ through naturally occurring variations (e.g. polymorphisms), each with its own valid existence. This clone is substantially in agreement with the reference, but a complete review of all prevailing variants is recommended prior to use. [More info](#)

OTI Annotation: This clone was engineered to express the complete ORF with an expression tag. Expression varies depending on the nature of the gene.

Components: The ORF clone is ion-exchange column purified and shipped in a 2D barcoded Matrix tube containing 10ug of transfection-ready, dried plasmid DNA (reconstitute with 100 ul of water).

- Reconstitution Method:
1. Centrifuge at 5,000xg for 5min.
  2. Carefully open the tube and add 100ul of sterile water to dissolve the DNA.
  3. Close the tube and incubate for 10 minutes at room temperature.
  4. Briefly vortex the tube and then do a quick spin (less than 5000xg) to concentrate the liquid at the bottom.
  5. Store the suspended plasmid at -20°C. The DNA is stable for at least one year from date of shipping when stored at -20°C.

RefSeq: [NM\\_002517.4](#)

RefSeq Size: 2066 bp

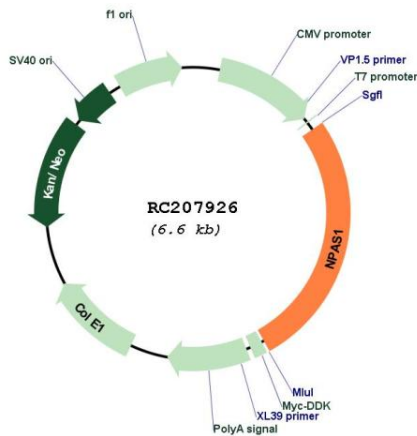
RefSeq ORF: 1773 bp

Locus ID: 4861

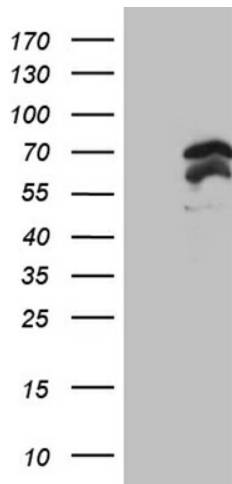
UniProt ID: [Q99742](#)  
 Cytogenetics: 19q13.32  
 Protein Families: Druggable Genome, Transcription Factors  
 MW: 62.7 kDa

Gene Summary: The protein encoded by this gene is a member of the basic helix-loop-helix (bHLH)-PAS family of transcription factors. Studies of a related mouse gene suggest that it functions in neurons. The exact function of this gene is unclear, but it may play protective or modulatory roles during late embryogenesis and postnatal development. [provided by RefSeq, Jul 2008]

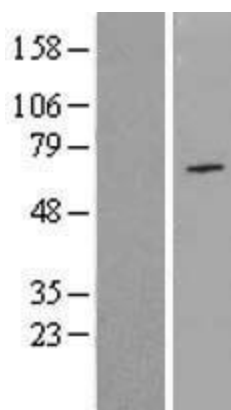
**Product images:**



Circular map for RC207926



HEK293T cells were transfected with the pCMV6-ENTRY control (Cat# [PS100001], Left lane) or pCMV6-ENTRY NPAS1 (Cat# RC207926, Right lane) cDNA for 48 hrs and lysed. Equivalent amounts of cell lysates (5 ug per lane) were separated by SDS-PAGE and immunoblotted with anti-NPAS1 (Cat# [TA809593])(1:2000). Positive lysates [LY419279] (100ug) and [LC419279] (20ug) can be purchased separately from OriGene.



Western blot validation of overexpression lysate (Cat# [LY419279]) using anti-DDK antibody (Cat# [TA50011-100]). Left: Cell lysates from untransfected HEK293T cells; Right: Cell lysates from HEK293T cells transfected with RC207926 using transfection reagent MegaTran 2.0 (Cat# [TT210002]).