

## Product datasheet for RC207922

### Pentraxin 3 (PTX3) (NM\_002852) Human Tagged ORF Clone

#### Product data:

Product Type:	Expression Plasmids
Product Name:	Pentraxin 3 (PTX3) (NM_002852) Human Tagged ORF Clone
Tag:	Myc-DDK
Symbol:	Pentraxin 3
Synonyms:	TNFAIP5; TSG-14
Mammalian Cell Selection:	Neomycin
Vector:	pCMV6-Entry (PS100001)
E. coli Selection:	Kanamycin (25 ug/mL)
ORF Nucleotide Sequence:	>RC207922 representing NM_002852 Red=Cloning site Blue=ORF Green=Tags(s)

TTTTGTAATACGACTCACTATAGGGCGGCCGGAATTCGTCGACTGGATCCGGTACCGAGGAGATCTGCCGCCGCGATCGCC

ATGCATCTCCTTGCGATTCTGTTTTGTGCTCTCTGGTCTGCAGTGTGGCCGAGAACTCGGATGATTATG  
ATCTCATGTATGTGAATTTGGACAACGAAATAGACAATGGACTCCATCCCACTGAGGACCCACGCCGTG  
CGACTGCGGTGAGGAGCACTCGGAATGGACAAGCTCTTCATCATGCTGGAGAACTCGCAGATGAGAGAG  
CGCATGCTGCTGCAAGCCACGGACGACGTCTGCGGGGCGAGCTGCAGAGGCTGCGGGAGGAGCTGGCC  
GGCTCGCGGAAAGCCTGGCGAGGCGTGCAGCGCCGGGGCTCCCGCAGAGGCCAGGCTGACCAGTGTCT  
GGACGAGCTGCTGCAGGCGACCCGCGACGCGGGCCGAGCTGGCGCGTATGGAGGGCGCGAGGCGCAG  
CGCCAGAGGAGGCGGGGCGCGCCTGGCCGCGGTGCTAGAGGAGCTGCGGCAGACGCGAGCCGACCTGC  
ACGCGGTGCGAGGCTGGGCTGCCCGGAGCTGGCTGCCGCGAGTTGTGAAACAGCTATTTTATCCCAAT  
GCGTTCCAAGAAGATTTTGGAAAGCGTGCATCCAGTGAGACCAATGAGGCTTGAGTCTTTAGTGCTGC  
ATTTGGGTCAAAGCCACAGATGTATTAACAAAACCATCTGTTTTCTATGGCACAAGAGGAATCCAT  
ATGAAATCCAGCTGTATCTCAGCTACCAATCCATAGTGTGTTGGTGGTGGAGAGGAGAACAACCTGGT  
TGCTGAAGCCATGGTTCCCTGGGAAGGTGACCCACCTGTGCGGCACCTGGAATTCAGAGGAAGGGCTC  
ACATCCTTGTTGGTAAATGGTGAACCTGGCGCTACCAGTGTGAGATGGCCACAGTCAATTGTTCTCTG  
AGGGAGGAATCCTGCAGATTGGCCAAGAAAAGAAATGGCTGTGTGGTGGTGGCTTTGATGAAACATT  
AGCCTTCTCTGGGAGACTCACAGGCTTCAATATCTGGGATAGTGTCTTAGCAATGAAGAGATAAGAGAG  
ACCGGAGGAGCAGAGTCTGTGCATCCGGGGGAATATTGTTGGTGGGAGTCACAGAGATCCAGCCAC  
ATGGAGGAGCTCAGTATGTTTCA

ACGCGTACGCGGCCGCTCGAGCAGAAACTCATCTCAGAAGAGGATCTGGCAGCAATGATATCCTGGATT  
ACAAGGATGACGACGATAAGGTTTAA



[View online »](#)

**Protein Sequence:** >RC207922 representing NM\_002852  
Red=Cloning site Green=Tags(s)

MHLLAILFCALWSAVLAENSDDYDLMYVNL DNEIDNGLHPTEDPTPCDCGQEHSEWDKLFIMLENSQMRE  
 RMLLQATDDVLRGELQRLREELGRLAESLARPCAPGAPAEARLTSALDELLQATRDAGRRLARMEGAEAQ  
 RPEEAGRALA AVL EELRQTRADLHAVQGWAARSWL PAGCETAILFPMRSKKIFGSVHPVRPMLRESFSAC  
 IWWKATDVLNKTILFSYGTKRNPYEIQLYLSYQSI V FVVGGEENKLVAEAMVSLGRWTHLCGTWNSEEG  
 TSLWVNGELAATTVEMATGHIVPEGGILQIGQEKNGCCVGGGFDETLAFSGRLTGFNIWDSVLSNEEIRE  
 TGAESCHIRGNIVGWGVTEIQPHGGAQYVS

TRTRPLEQKLISEEDLAANDILDYKDDDDKV

**Chromatograms:** [https://cdn.origene.com/chromatograms/mg3517\\_d02.zip](https://cdn.origene.com/chromatograms/mg3517_d02.zip)

**Restriction Sites:** SgfI-MluI

**Cloning Scheme:**



**ACCN:** NM\_002852

**ORF Size:** 1143 bp

**OTI Disclaimer:** The molecular sequence of this clone aligns with the gene accession number as a point of reference only. However, individual transcript sequences of the same gene can differ through naturally occurring variations (e.g. polymorphisms), each with its own valid existence. This clone is substantially in agreement with the reference, but a complete review of all prevailing variants is recommended prior to use. [More info](#)

**OTI Annotation:** This clone was engineered to express the complete ORF with an expression tag. Expression varies depending on the nature of the gene.

**Components:** The ORF clone is ion-exchange column purified and shipped in a 2D barcoded Matrix tube containing 10ug of transfection-ready, dried plasmid DNA (reconstitute with 100 ul of water).

**Reconstitution Method:**

1. Centrifuge at 5,000xg for 5min.
2. Carefully open the tube and add 100ul of sterile water to dissolve the DNA.
3. Close the tube and incubate for 10 minutes at room temperature.
4. Briefly vortex the tube and then do a quick spin (less than 5000xg) to concentrate the liquid at the bottom.
5. Store the suspended plasmid at -20°C. The DNA is stable for at least one year from date of shipping when stored at -20°C.

**RefSeq:** [NM\\_002852.2](#), [NP\\_002843.1](#)

**RefSeq Size:** 1908 bp

**RefSeq ORF:** 1146 bp

**Locus ID:** 5806

**UniProt ID:** [P26022](#)

**Cytogenetics:** 3q25.32

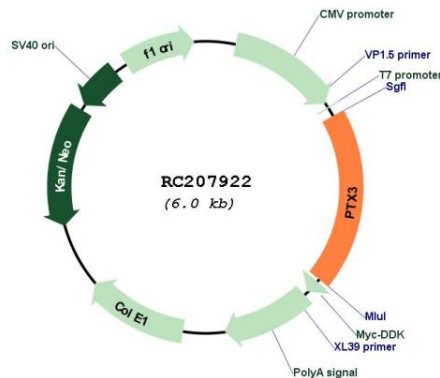
**Domains:** PTX, LamGL

**Protein Families:** Secreted Protein

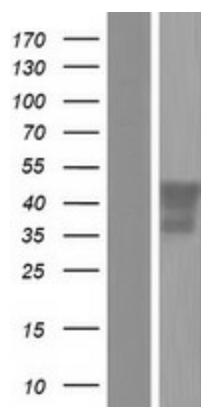
**MW:** 41.8 kDa

**Gene Summary:** This gene encodes a member of the pentraxin protein family. The expression of this protein is induced by inflammatory cytokines in response to inflammatory stimuli in several mesenchymal and epithelial cell types, particularly endothelial cells and mononuclear phagocytes. The protein promotes fibrocyte differentiation and is involved in regulating inflammation and complement activation. It also plays a role in angiogenesis and tissue remodeling. The protein serves as a biomarker for several inflammatory conditions. [provided by RefSeq, Jun 2016]

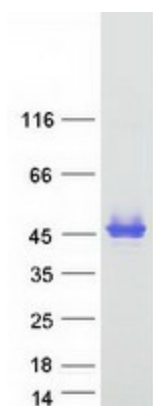
### Product images:



Circular map for RC207922



Western blot validation of overexpression lysate (Cat# [LY419080]) using anti-DDK antibody (Cat# [TA50011-100]). Left: Cell lysates from untransfected HEK293T cells; Right: Cell lysates from HEK293T cells transfected with RC207922 using transfection reagent MegaTran 2.0 (Cat# [TT210002]).



Coomassie blue staining of purified PTX3 protein (Cat# [TP307922]). The protein was produced from HEK293T cells transfected with PTX3 cDNA clone (Cat# RC207922) using MegaTran 2.0 (Cat# [TT210002]).