

Product datasheet for RC207920

HLTF (NM_003071) Human Tagged ORF Clone

Product data:

| | |
|---------------------------|---|
| Product Type: | Expression Plasmids |
| Product Name: | HLTF (NM_003071) Human Tagged ORF Clone |
| Tag: | Myc-DDK |
| Symbol: | HLTF |
| Synonyms: | HIP116; HIP116A; HLTF1; RNF80; SMARCA3; SNF2L3; ZBU1 |
| Mammalian Cell Selection: | Neomycin |
| Vector: | pCMV6-Entry (PS100001) |
| E. coli Selection: | Kanamycin (25 ug/mL) |
| ORF Nucleotide Sequence: | >RC207920 ORF sequence Red=Cloning site Blue=ORF Green=Tags(s) |

TTTTGTAATACGACTCACTATAGGGCGGCCGGAATTCGTCGACTGGATCCGGTACCGAGGAGATCTGCC
GCC**CGATCGCC**

ATGTCCTGGATGTTCAAGAGGGATCCAGTTTGAAGTACTTGCAGACTGTCCAGTATGGAGTTCATGGAA
ATTTTCCACGCCTCTCATATCCAACCTTTCTTCCACGTTTTGAATCCAAGATGTTATCCCTCCAGATGA
CTTTCTAACTAGTGATGAAGAAGTAGATTCCGTTTTATTGGAAGTTGAGAGGTCATGTGGTTGGACTA
CGCTATTACACGGGAGTAGTTAATAATAATGAAATGGTTGCATTACAACGAGATCCTAATAACCCCTATG
ATAAGAATGCAATTAAGTAAACAATGTGAATGGAAATCAAGTTGGCCATTTAAAGAAAGAGCTTGCAAG
TGCTTTGGCCTATATCATGGACAACAAATTGGCACAAATTGAAGGGTAGTTCCTTTTGGTGCAAAACAAT
GCTTTTACCATGCCTCTGCATATGACTTTTTGGGAAAAGAAGAAAATAGAAAAGCGTTTCAGATCAGT
TGAAGAAACATGGATTTAAATGGGTCCTGCACAAAAAATTTAGGATTCATTTGGAAAGTGGTTGGGG
CTCTGGAAGAGCTGGACCAAGCTATAGTATGCCAGTGCATGCTGCAGTACAGATGACAACGAACAGCTT
AAACAGAATTTGACAAATGTTTGAAGATTTAAAGAAGATGATAAAACCCATGAAATGGAACAGCTG
AGGCTATTGAAACACCACTGCTCCACATCAAAAACAAGCTCTAGCTTGGATGGTGTACCGGAAAATAG
CAAAGAACCTCCACCATTCTGGGAACAGCGAAATGACTTATACTATAACAATAACAAATTTTTCTGAG
AAGGACCGACAGAAAATGTCCATGGAGGAATTTAGCTGATATGGGTTTGGGTAACAACTCTTACAG
CCATTGCAGTAATCCTTACCAACTCCATGATGGCAGACCTCTTCTATTGAAAGAGTTAAAAAGAATCT
ACTGAAGAAGGAATATAATGTTAACGATGACTCTATGAACTTGGAGGAAACAATACCAGTGAAAAGGCA
GATGGACTAAGCAAAGACGCATCTAGTGTAGTGAACAACCCAGTATTTAGATATCAAGGAGAAGAGTA
AGTTTTCGCATGTCAGAATTGTCTAGCTCCCGCCCCAAAAGAAGAAAAACTGCTGTCCAGTACATAGAAA
CAGTGATTCAGAGGAAATGAAACAAGTGAATTGCCGAGAAAATGAAAGGCAAACCTGAAAAATGTACAG
TCTGAACTAAAGGCAGGGCGAAAGGATCTTAAAGTTATAGAAGATGTGCATTTGCATGTGCATTAA
CTTCATCTGTTCTACAACAAAAAGAAAATGTTGAAAAAGGAGCTTGTGCAGTGGAGGGTCAAAGAA
AACTGATGTTGAGGAGAGACCAAGAACAACACTGATCATCTGTCCGCTTCTGTGTTAAGCAACTGGATT



[View online »](#)

GACCAGTTGGACAACATATAAAATCAGATGTACACTTGAATTTTATGTTTATTATGGTCTGATCGTA
 TTAGAGAACCGGCCTTACTTTCAAAACAGGATATTGTTTTGACTACGTATAATATTTAACTCATGACTA
 TGGAACTAAAGGAGATAGTCCATTACATAGCATAAGGTGGCTAAGAGTGATCCTGGATGAAGGACATGCC
 ATACGAAATCCAAATGCTCAGCAGACAAAAGCTGACTTACTTGAATCAGAAAGAAGATGGGTTTTGA
 CAGGACTCCAATCCAGAATCTTTAAAGGACTTGTGGTCTCTTCTTTTAAACTTAAACCATT
 TATTGATAGAGAATGGTGGCATAGAACAATACAGCGTCTGTACAATGGGAGATGAAGGAGGACTTAGG
 CGTTTACAGTCCCTAATTAATAATATTACACTTGAAGAACAAGACAAGCAAAATTAAGGAAAACCTG
 TTTTGGAGTTACCAGAAGCTAAAGTATTTATTCAGCACATTACACTTTCAGATGAAGAGAGAAAGATTTA
 TCAGTCTGTGAAAAATGAAGGCAGAGCCACTATTGGAAGGTATTTAATGAAGGGACTGTCTGGCACAT
 TATGCAGATGTCTGGGTCTTTTCTTAGACTGCGGCAAATTTGTTGCCATACTTACCTTCTTACAAATG
 CAGTGTCTTCCAATGGCCCTCAGGAAATGATACACCTGAAGAACTGAGAAAGAAGTTAATAAGGAAGAT
 GAAGTTAATTCTGAGCTCAGGTTGAGATGAGGAATGTGCAATTTGCTGGATTCTTTAACAGTCTCTGTG
 ATAACACATTGTGCACATGTATTTGTAACCCTGTATTTGCCAAGTCATTCAGAATGAGCAGCCACATG
 CTAATGCCCTTATGCAGAAATGATATACATGAAGATAATTTATTAGAATGCTCCAGAAGAATTAGC
 ACGTGACAGTGAGAAAAGTCTGATATGGAATGGACATCCAGTCAAAGATTAATGCGCTAATGCACGCA
 TTGACTGACTTAAGAAAAGAAATCCCAACATAAAAAGTTTGGTTGTTTCTCAGTTTACAACATTCTGT
 CTTAATAGAAAATACCCTTAAAGCCTCTGGATTTGTGTTTACTCGTTGGATGGTTCCATGGCCAAAA
 GAAAAGAGTTGAATCAATTCAGTGTCTTCAAACACTGAAGCAGGATCTCCAATAATGCTTCTGTCC
 TTAAGCAGGTGGAGTTGGTTTGAATCTGTCTGCAGCTTCTCGAGTGTTTTAAATGGATCCAGCCTGGA
 ATCCTGTCTGAAGATCAGTGTCTTGCAGATGCCATAGACTTGGTCAGAAGCAAGAAGTTATCATCAC
 AAAATTCATTGTAAGGACTCTGTTGAAGAAAATATGCTGAAAATACAAAACAAAAGAGAGAAGTTGCA
 GCAGGAGCCTTTGGAACATAAAAACCAATGCTGACGAAATGAAACAAGCCAAAATTAATGAAATCAGAA
 CATTAATTGACTTA

ACGCGTACGCGGCCGCTCGAGCAGAACTCATCTCAGAAGAGGATCTGGCAGCAAATGATATCCTGGATT
 ACAAGGATGACGACGATAAGGTTTAA

Protein Sequence:

>RC207920 protein sequence
 Red=Cloning site Green=Tags(s)

MSWMFKRPVWKYLQTVQYGVHGNFPRLSYPTFFPRFEFQDVIPPDDLTSDEEVDVSVLFGSLRGHVVGL
 RYYTGVVNNNEMVALQRDPNNPYDKNAIKVNNVNGNQVGHLLKELAGALAYIMDNKLAQIEGVVFPFGANN
 AFTMPLHMTFWGKEENRKAIVSDQLKKHGFKLGPAPKTLGFNLESGWGSGRAGPSYSMPVHAQVMTTEQL
 KTEFDKLFEDLKEDDKTHEMEPAEAIETPLLPHQKQALAWMVSRENSKELPPFWEQRNDLYNTITNFSE
 KDRPENHGGILADDMLGKTLTAIAVILTNFHDGRPLPIERVKKNLLKKEYNVNDDSMKLGNNNTSEKA
 DGLSKDASRCSEQPSISDIKEKSKFRMSELSSSRPKRRKTAVQYIESSDSEEIETSELPQKMKGKLNKQV
 SETKGRAGSSKVIEDVAFACALTSSVPTTKKMLKKGACAVEGSKKTDVEERPTTLIICPLSVLSNWI
 DQFGQHIKSDVHLNFYVYYPDRIREPALLSKQDIVLTTYNILTHDYGTGDSPLHSIRWLRVILDEGHA
 IRNPNAQQTKAVLDLESERRWVLTGTPIQNSLKDLSLLSFLKLPKPFIDREWWHRTIQRPVMTMGDEGGLR
 RLQSLIKNITLRRTKTSKIKGKPVLELPERKVFIQHITLSDEERKIYQSVKNEGRATIGRYFNEGTVLAH
 YADVLGLLLRLRQICCHTYLLTNAVSSNGPSGNDTPEELRKKLIRKMKLILSSGSDEECAICLDSLTPVP
 ITHCAHFVCKPCICQVIQNEQPHAKCPLCRNDIHEDNLLCEPPEELARDSEKSDMEWTSSSKINALMHA
 LTDLRKKNPNIKSLVVSQFTTFLSLIEIPLKASGFVFTRLDGSMAQKRVESIQCFQNTAEGSPTIMLLS
 LKAGGVGLNLSAASRVFLMDPAWNPAEDQCFDRCHRLGQKQEVIIITKFIKDSVEENMLKIQNKKRELA
 AGAFGTTKPNADKQAKINEIRTLIDL

TRTRPLEQKLISEEDLAANDILDYKDDDDKV

Chromatograms:

https://cdn.origene.com/chromatograms/mk6204_e12.zip

Restriction Sites:

Sgfl-Mlul

Reconstitution Method:

1. Centrifuge at 5,000xg for 5min.
2. Carefully open the tube and add 100ul of sterile water to dissolve the DNA.
3. Close the tube and incubate for 10 minutes at room temperature.
4. Briefly vortex the tube and then do a quick spin (less than 5000xg) to concentrate the liquid at the bottom.
5. Store the suspended plasmid at -20°C. The DNA is stable for at least one year from date of shipping when stored at -20°C.

RefSeq: [NM_003071.4](#)

RefSeq Size: 5351 bp

RefSeq ORF: 3030 bp

Locus ID: 6596

UniProt ID: [Q14527](#)

Cytogenetics: 3q24

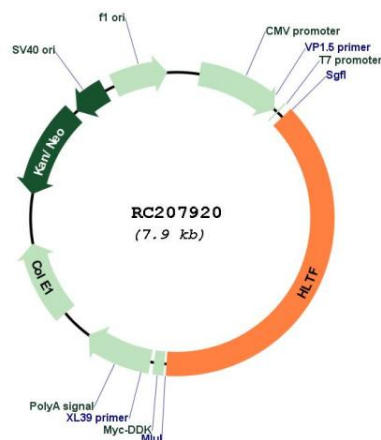
Domains: SNF2_N, DEAD, helicase_C, RING

Protein Families: Druggable Genome, Transcription Factors

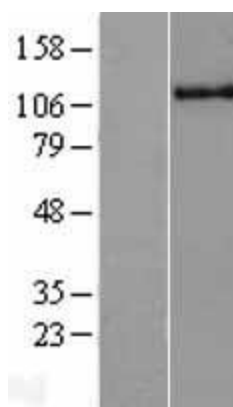
MW: 113.9 kDa

Gene Summary: This gene encodes a member of the SWI/SNF family. Members of this family have helicase and ATPase activities and are thought to regulate transcription of certain genes by altering the chromatin structure around those genes. The encoded protein contains a RING finger DNA binding motif. Two transcript variants encoding the same protein have been found for this gene. However, use of an alternative translation start site produces an isoform that is truncated at the N-terminus compared to the full-length protein. [provided by RefSeq, Jul 2008]

Product images:



Circular map for RC207920



Western blot validation of overexpression lysate (Cat# [LY401071]) using anti-DDK antibody (Cat# [TA50011-100]). Left: Cell lysates from untransfected HEK293T cells; Right: Cell lysates from HEK293T cells transfected with RC207920 using transfection reagent MegaTran 2.0 (Cat# [TT210002]).