

Product datasheet for **RC207916**

GAS 6 (GAS6) (NM_000820) Human Tagged ORF Clone

Product data:

Product Type:	Expression Plasmids
Product Name:	GAS 6 (GAS6) (NM_000820) Human Tagged ORF Clone
Tag:	Myc-DDK
Symbol:	GAS 6
Synonyms:	AXLLG; AXSF
Mammalian Cell Selection:	Neomycin
Vector:	pCMV6-Entry (PS100001)
E. coli Selection:	Kanamycin (25 ug/mL)



[View online »](#)

ORF Nucleotide
Sequence:

>RC207916 representing NM_000820
Red=Cloning site Blue=ORF Green=Tags(s)

TTTTGTAATACGACTCACTATAGGGCGGCCGGGAATTCGTCGACTGGATCCGGTACCGAGGAGATCTGCC
GCCGCGATCGCC

ATGGCCCCCTCGCTCTCGCCCGGGCCCGCCCTGCGCCGCGCGCCGAGCTGCTGCTGCTGCTGCTGG
CCGCGGAGTGCGCGCTTGCCGCGCTGTTGCCGGCGCGAGGCCACGCAGTTCCTGCGGCCAGGCAGCG
CCGCGCCTTTCAGGTCTTCGAGGAGGCCAAGCAGGGCCACCTGGAGAGGGAGTGCCTGGAGGAGCTGTGC
AGCCGCGAGGAGGCGCGGAGGTGTTGAGAACGACCCCGAGACGGATTATTTTTACCAAGATACTTAG
ACTGCATCAACAAGTATGGGTCTCCGTACACAAAACTCAGGCTTCGCCACCTGCGTGCAAAACCTGCC
TGACCAGTGCACGCCAACCCCTGCGATAGGAAGGGGACCAAGCCTGCCAGGACCTCATGGCAACTTC
TTCTGCCTGTGTAAGCTGGCTGGGGGGCCGGCTCTGCGACAAAGATGTCAACGAATGCAGCCAGGAGA
ACGGGGGCTGCCAGATCTGCCACAACAGCCGGTAGCTTCCACTGTTCTGCCACAGCGGCTTCGA
GCTCTCCTCTGATGGCAGGACCTGCCAAGACATAGACAGTGCAGACTCGGAGGCCTGCGGGGAGGCG
CGCTGCAAGAACCTGCCCGCTCCTACTCCTGCCTCTGTGACGAGGGCTTTCGCTACAGCTCCCAGGAGA
AGGCTTGCCGAGATGTGGACGAGTGTCTGCAGGGCCGCTGTGAGCAGGTCTGCGTGAACCTCCCAGGGAG
CTACACCTGCCACTGTGACGGGCGTGGGGGCTCAAGCTGTCCCAGGACATGGACACCTGTGAGGACATC
TTGCCGTGCGTGCCCTTCAGCGTGGCCAAGAGTGTGAAGTCTTGTACCTGGGCCGATGTTCACTGGGA
CCCCGTGATCCGACTGCGCTTCAAGAGGCTGCAGCCACCAGGCTGGTAGTGTGACTTCCGGAC
CTTTGACCCCGAGGGCATCCTCCTCTTGGCCGAGGCCACCAGGACAGCACCTGGATCGTGTGGCCCTG
AGAGCCGGCCGGCTGGAGCTGCAGTGCCTACAACGGTGTGCGCCGTGTACCAGCAGCGGCCCGGTCA
TCAACCATGGCATGTGGCAGACAATCTCTGTTGAGGAGCTGGCGGGAATCTGGTCAATCAAGTCAACAG
GGATGCTGTATGAAAATCGCGTGGCCGGGACTTGTTCACCCGAGCGAGGACTGTATCATCTGAAC
CTGACCGTGGGAGGTATCCCTTCCATGAGAAGGACCTCGTGCAGCCTATAAACCTCGTCTGGATGGCT
GCATGAGGAGCTGGAACCTGGCTGAACGGAGAAGACACCACCATCCAGGAAACGGTGAAGTGAACACGAG
GATGCAGTGCTTCTCGGTGACGGAGAGAGGCTCTTCTACCCCGGAGCGGCTTCGCCTTCTACAGCCTG
GACTACATGCGGACCCCTCTGGACGTGGGACTGAATCAACCTGGGAAGTAGAAGTGTGGCTCACATCC
GCCAGCCGACAGACAGGCGTGTGTTGCGCTCTGGGCCCCGACCTCCGTGCCGTGCCTCTCTCTGT
GGCACTGGTAGACTATCACTCCACGAAGAACTCAAGAAGCAGCTGGTGGTCTGGCCGTGGAGCATAACG
GCCTTGGCCCTAATGGAGATCAAGTCTGCGACGGCCAAGAGCACGTGGTCAACCTCTCGTGGGGACG
GTGAGGCCACCCTGGAGGTGGACGGCACAGGGGCCAGAGCGAGGTGAGCGCCGCGAGCTGCAGGAGAG
GCTGGCCGTGCTCGAGAGGCACCTGCGGAGCCCGTGTCTACCTTTGCTGGCGGCCTGCCAGATGTGCCG
GTGACTTCAGCGCCAGTCAACCGGTTCTACCGCGGCTGCATGACACTGGAGGTCAACCGGAGGCTGCTGG
ACCTGGACGAGGCGGCGTACAAGCACAGCGACATACGGCCCACTCCTGCCCCCGTGGAGCCCGCCG
AGCC

ACGCGTACGCGGGCCGCTCGAGCAGAACTCATCTCAGAAGAGGATCTGGCAGCAAATGATATCCTGGATT
ACAAGGATGACGACGATAAGGTTTAA

Protein Sequence: >RC207916 representing NM_000820
 Red=Cloning site Green=Tags(s)

```
MAPSLSPGPAALRRAPQLLLLLLLAAECALAALLPAREATQFLRPRQRRAFQVFEEAKQGHLERECVEELC
SREEAREVFENDPETDYFYPRYLDCINKYGSPTYKNSGFATCVQQLPDQCTPNPCDRKGTQACQDLMGNF
FCLCKAGWGGRLCDKDVNECSQENGGCLQICHNKPGSFHCSCHSGFELSSDGRTCQDIDECADSEACGEA
RCKNLPGSYSCLCDEGFAYSSQEKACRDVDECLQGRCEQVCVNSPGSYTCHCDGRGGLKLSQDMDTCEDI
LPCVPPFSVAKSVKSLYLGRMFSGTPVIRLRFKRLQPTRLVAEFDFTFDPEGILLFAGGHQDSTWIVLAL
RAGRLELQLRYNGVGRVTSSGPVINHGMWQTI SVEELARNLVIKVNRDAVMKIAVAGDLFQPERGLYHLN
LTVGGIPFHEKDLVQPINRLDGCMSWNWLNGETTTIQETVKVNTRMQCF SVTERGSFYPGSGFAFYSL
DYMRTPLDVGTSTWEVEVVAHIRPAADTVL FALWAPDLRAVPLSVALVDYHSTKLLKQLVVLAVEHT
ALALMEIKVCDGQEHVTVSLRDGEATLEVDGTRGQSEVSA AQLQERLAVLERHLRSPVLT FAGGLPDVP
VTSAPVTA FYRGCMTELVNRLLDLDEAAYKHS DITAHSCPPVEPAAA
```

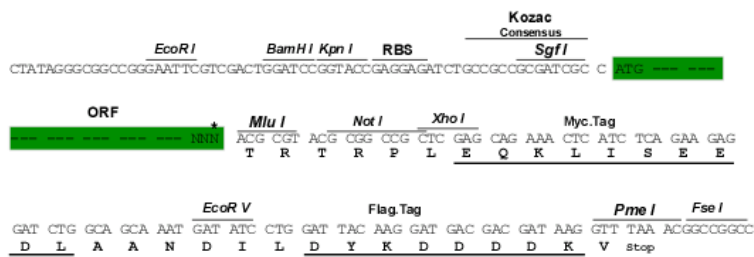
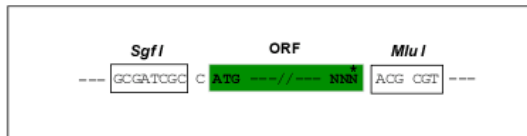
TRTRPLEQKLISEEDLAANDILDYKDDDDKV

Chromatograms: https://cdn.origene.com/chromatograms/mg2842_c01.zip

Restriction Sites: Sgfl-MluI

Cloning Scheme:

Cloning sites used for ORF Shuttling:



* The last codon before the Stop codon of the ORF

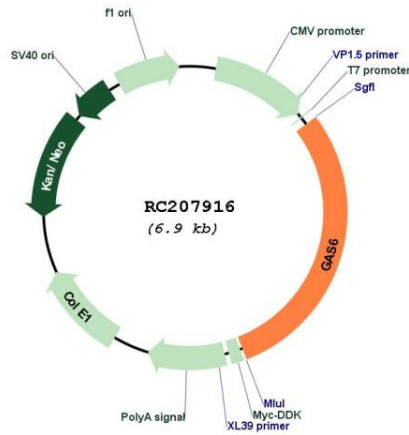
ACCN: NM_000820

ORF Size: 2034 bp

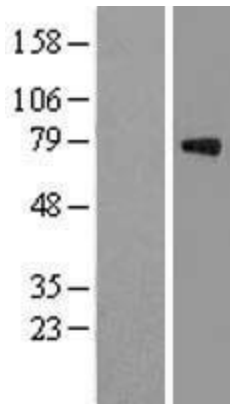
OTI Disclaimer:	<p>Due to the inherent nature of this plasmid, standard methods to replicate additional amounts of DNA in E. coli are highly likely to result in mutations and/or rearrangements. Therefore, OriGene does not guarantee the capability to replicate this plasmid DNA. Additional amounts of DNA can be purchased from OriGene with batch-specific, full-sequence verification at a reduced cost. Please contact our customer care team at custsupport@origene.com or by calling 301.340.3188 option 3 for pricing and delivery.</p> <p>The molecular sequence of this clone aligns with the gene accession number as a point of reference only. However, individual transcript sequences of the same gene can differ through naturally occurring variations (e.g. polymorphisms), each with its own valid existence. This clone is substantially in agreement with the reference, but a complete review of all prevailing variants is recommended prior to use. More info</p>
OTI Annotation:	<p>This clone was engineered to express the complete ORF with an expression tag. Expression varies depending on the nature of the gene.</p>
Components:	<p>The ORF clone is ion-exchange column purified and shipped in a 2D barcoded Matrix tube containing 10ug of transfection-ready, dried plasmid DNA (reconstitute with 100 ul of water).</p>
Reconstitution Method:	<ol style="list-style-type: none">1. Centrifuge at 5,000xg for 5min.2. Carefully open the tube and add 100ul of sterile water to dissolve the DNA.3. Close the tube and incubate for 10 minutes at room temperature.4. Briefly vortex the tube and then do a quick spin (less than 5000xg) to concentrate the liquid at the bottom.5. Store the suspended plasmid at -20°C. The DNA is stable for at least one year from date of shipping when stored at -20°C.
Note:	<p>Plasmids are not sterile. For experiments where strict sterility is required, filtration with 0.22um filter is required.</p>
RefSeq:	NM_000820.4
RefSeq Size:	2461 bp
RefSeq ORF:	2037 bp
Locus ID:	2621
UniProt ID:	Q14393
Cytogenetics:	13q34
Domains:	GLA, LamG, EGF_CA, EGF, EGF
Protein Families:	Druggable Genome, Secreted Protein
MW:	74.93 kDa

Gene Summary:

This gene encodes a gamma-carboxyglutamic acid (Gla)-containing protein thought to be involved in the stimulation of cell proliferation. This gene is frequently overexpressed in many cancers and has been implicated as an adverse prognostic marker. Elevated protein levels are additionally associated with a variety of disease states, including venous thromboembolic disease, systemic lupus erythematosus, chronic renal failure, and preeclampsia. [provided by RefSeq, Aug 2014]

Product images:


Circular map for RC207916



Western blot validation of overexpression lysate (Cat# [LY424508]) using anti-DDK antibody (Cat# [TA50011-100]). Left: Cell lysates from untransfected HEK293T cells; Right: Cell lysates from HEK293T cells transfected with RC207916 using transfection reagent MegaTran 2.0 (Cat# [TT210002]).