

Product datasheet for **RC207913**

MD1 (LY86) (NM_004271) Human Tagged ORF Clone

Product data:

Product Type: Expression Plasmids
Product Name: MD1 (LY86) (NM_004271) Human Tagged ORF Clone
Tag: Myc-DDK
Symbol: MD1
Synonyms: dj80N2.1; MD-1; MD1; MMD-1
Mammalian Cell Selection: Neomycin
Vector: pCMV6-Entry (PS100001)
E. coli Selection: Kanamycin (25 ug/mL)
ORF Nucleotide Sequence: >RC207913 ORF sequence
 Red=Cloning site Blue=ORF Green=Tags(s)

TTTTGTAATACGACTCACTATAGGGCGGCCGGAATTCGTCGACTGGATCCGGTACCGAGGAGATCTGCC
 GCC**CGATCGCC**

ATGAAGGGTTTCACAGCCACTCTTCTCTGGACTCTGATTTTTCCAGCTGCAGTGGAGGCGCGGTG
 GAAAGCCTGGCCACACACGTGGTCTGTAGCGACAGCGGCTTGAAGTCTCTACCAGAGTTGCGATCC
 ATTACAAGATTTGGCTTTTCTGTTGAAAAGTGTCCAAGCAATAAAATCAAATATCAACATTAGATTT
 GGAATTATCTGAGAGAGACATCAAAGAGCTTTTCTTGACCTAGCTCTCATGTCTCAAGGCTCATCTG
 TTTTGAATTTCTCTATCCCATCTGTGAGCGGCTCTGCCAAGTTTTCTTCTGTGGAAGAAGGAAAGG
 AGAGCAGATTTACTATGCTGGGCCTGTCAATAATCCTGAATTTACTATTCTCAGGGAGAATACCGGTT
 TTGCTGGAAGTGTACACTGAAAAACGGTCCACCGTGGCCTGTGCCAATGCTACTATCATGTGCTCC

ACGCGTACGCGGCCGCTCGAGCAGAACTCATCTCAGAAGAGGATCTGGCAGCAAATGATATCCTGGATT
 ACAAGGATGACGACGATAAGGTTTAA

Protein Sequence: >RC207913 protein sequence
 Red=Cloning site Green=Tags(s)

MKGFTATLFLWTLIFPSCSGGGGKAWPTHVVCSDSGLVLYQSCDPLQDFGFSVEKCSKQLKSNINIRF
 GIILREDIKELFLDLALMSQSSVLNFSYPICEAALPKFSFCGRRKGEQIYYAGPVNNPEFTIPQGEYQV
 LLELYTEKRSTVACANATIMCS

TRTRPLEQK**L**ISEEDLAANDILDYKDDDDK**V**

Chromatograms: https://cdn.origene.com/chromatograms/mk6033_a06.zip



[View online >](#)

Restriction Sites: SgfI-MluI

Cloning Scheme:



ACCN: NM_004271

ORF Size: 486 bp

OTI Disclaimer: The molecular sequence of this clone aligns with the gene accession number as a point of reference only. However, individual transcript sequences of the same gene can differ through naturally occurring variations (e.g. polymorphisms), each with its own valid existence. This clone is substantially in agreement with the reference, but a complete review of all prevailing variants is recommended prior to use. [More info](#)

OTI Annotation: This clone was engineered to express the complete ORF with an expression tag. Expression varies depending on the nature of the gene.

Components: The ORF clone is ion-exchange column purified and shipped in a 2D barcoded Matrix tube containing 10ug of transfection-ready, dried plasmid DNA (reconstitute with 100 ul of water).

Reconstitution Method:

1. Centrifuge at 5,000xg for 5min.
2. Carefully open the tube and add 100ul of sterile water to dissolve the DNA.
3. Close the tube and incubate for 10 minutes at room temperature.
4. Briefly vortex the tube and then do a quick spin (less than 5000xg) to concentrate the liquid at the bottom.
5. Store the suspended plasmid at -20°C. The DNA is stable for at least one year from date of shipping when stored at -20°C.

RefSeq: [NM_004271.4](#)

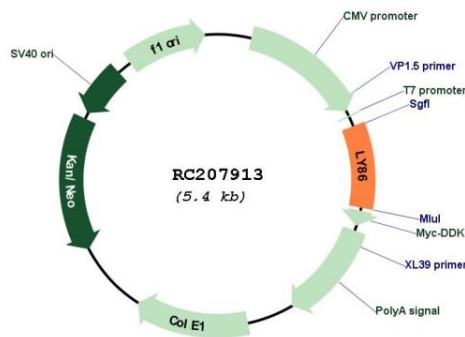
RefSeq Size: 895 bp

RefSeq ORF: 489 bp

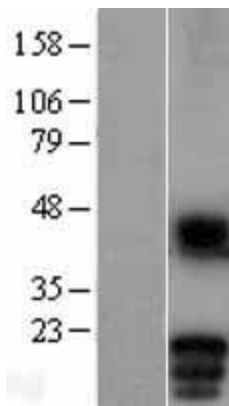
Locus ID: 9450

UniProt ID:	O95711
Cytogenetics:	6p25.1
Domains:	ML
Protein Families:	Secreted Protein
MW:	17.9 kDa
Gene Summary:	May cooperate with CD180 and TLR4 to mediate the innate immune response to bacterial lipopolysaccharide (LPS) and cytokine production. Important for efficient CD180 cell surface expression (By similarity).[UniProtKB/Swiss-Prot Function]

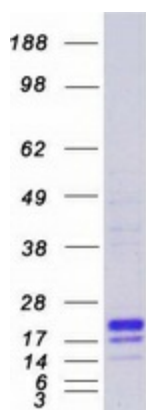
Product images:



Circular map for RC207913



Western blot validation of overexpression lysate (Cat# [LY401367]) using anti-DDK antibody (Cat# [TA50011-100]). Left: Cell lysates from untransfected HEK293T cells; Right: Cell lysates from HEK293T cells transfected with RC207913 using transfection reagent MegaTran 2.0 (Cat# [TT210002]).



Coomassie blue staining of purified LY86 protein (Cat# [TP307913]). The protein was produced from HEK293T cells transfected with LY86 cDNA clone (Cat# RC207913) using MegaTran 2.0 (Cat# [TT210002]).