

Product datasheet for RC207907

CLEC10A (NM_182906) Human Tagged ORF Clone

Product data:

Product Type:	Expression Plasmids
Product Name:	CLEC10A (NM_182906) Human Tagged ORF Clone
Tag:	Myc-DDK
Symbol:	CLEC10A
Synonyms:	CD301; CLECSF13; CLECSF14; HML; HML2; MGL
Mammalian Cell Selection:	Neomycin
Vector:	pCMV6-Entry (PS100001)
E. coli Selection:	Kanamycin (25 ug/mL)
ORF Nucleotide Sequence:	>RC207907 ORF sequence Red=Cloning site Blue=ORF Green=Tags(s)

TTTTGTAATACGACTCACTATAGGGCGGCCGGAATTCGTCGACTGGATCCGGTACCGAGGAGATCTGCC
GCC**CGGATCGCC**

ATGACAAGGACGTATGAAAACCTCCAGTACTTGGAGAATAAGGTGAAAGTCCAGGGGTTAAAAATGGGC
CACTTCTCTCCAGTCCCTCCTGCAGCGTCTCTGCTCTGGGCCCTGCCATCTCTGCTGTCCCTGGGCT
CGGCCTCTGCTGCTGGTCATCATCTGTGTGGTTGGATTCCAAAATTCAAAATTCAGAGGGACCTGGT
ACCCTGAGAACAGATTTAGCAACTTCACCTCAAACACTGTGGCGGAGATCCAGGCACTGACTTCCAGG
GCAGCAGCTTGAAGAAACGATAGCATCTCTGAAAGCTGAGGTGGAGGGTTCAAGCAGGAACGGCAGGC
AGGGGTATCTGAGCTCCAGGAACACACTACGCAGAAGGCACACCTAGGCCACTGTCCCCTGCCATCT
GTGTGTGTCCCAGTTTCTGAAATGCTCTGCGAGTCCAGCAGCTGGTGAAGACCTGAAGAACTGA
CCTGCCAGGTGGCTACTCTCAACAACAATGCCTCCACTGAAGGGACCTGCTGCCCTGTCAACTGGGTGGA
GCACCAAGACAGCTGCTACTGGTTCTCTCACTCTGGGATGTCTGGGCCGAGGCTGAGAAGTACTGCCAG
CTGAAGAACGCCACCTGGTGGTCATCAACTCCAGGGAGGAGCAGAATTTGTCCAGAAATATCTGGGCT
CCGCATACCTGGATGGCCTCAGTGACCCTGAAGGAGCCTGGAAGTGGTGGTGAACAGACTATGC
GACCGGCTTCCAGAACTGGAAGCCAGGCCAGCCAGCAGCTGGCAGGGGCACGGGCTGGTGGAGGCGAG
GACTGTGCTCACTTCCATCCAGACGGCAGGTGGAATGACGACGTCTGCCAGAGCCCTACCACTGGGTCT
CGGAGGCTGGCCTGGGTGAGCCAGCCAGGAGATCAC

ACGCGTACGCGGCCGCTCGAGCAGAAAACCTCATCTCAGAAGAGGATCTGGCAGCAAATGATATCTGGATT
ACAAGGATGACGACGATAAGGTTTAA



[View online »](#)

Protein Sequence: >RC207907 protein sequence
Red=Cloning site Green=Tags(s)

MTRTYENFYLENKVKVQGFKNGLPLQLSLLQRLCSGPCHLLLSLGLGLLLLVIICVVGFQNSKFQRDLV
 TLRTDFSNFTSNTVAEQALTSQSSLEETIASLKAIEVEGFKQERQAGVSELQEHTTQKAHLGHCPHCPS
 VCVPVHSEMLLRVQQLVQDLKKLTCQVATLNNNASTEGETCCPVNWEHQDSCYWF SHSGMSWAEAEKYCQ
 LKNAHLVVINSREEQNFVQKYLGSAYTWMGLSDPEGAWKWWVDGTDYATGFQNWKPGQPDDWQGHGLGGGE
 DCAHFHPDGRWNDDVQCQRPYHWVCEAGLGQTSQESH

TRTRPLEQKLISEEDLAANDILDYKDDDDKV

Chromatograms: https://cdn.origene.com/chromatograms/mk6515_b03.zip

Restriction Sites: SgfI-MluI

Cloning Scheme:



ACCN: NM_182906

ORF Size: 948 bp

OTI Disclaimer: The molecular sequence of this clone aligns with the gene accession number as a point of reference only. However, individual transcript sequences of the same gene can differ through naturally occurring variations (e.g. polymorphisms), each with its own valid existence. This clone is substantially in agreement with the reference, but a complete review of all prevailing variants is recommended prior to use. [More info](#)

OTI Annotation: This clone was engineered to express the complete ORF with an expression tag. Expression varies depending on the nature of the gene.

Components: The ORF clone is ion-exchange column purified and shipped in a 2D barcoded Matrix tube containing 10ug of transfection-ready, dried plasmid DNA (reconstitute with 100 ul of water).

Reconstitution Method:

1. Centrifuge at 5,000xg for 5min.
2. Carefully open the tube and add 100ul of sterile water to dissolve the DNA.
3. Close the tube and incubate for 10 minutes at room temperature.
4. Briefly vortex the tube and then do a quick spin (less than 5000xg) to concentrate the liquid at the bottom.
5. Store the suspended plasmid at -20°C. The DNA is stable for at least one year from date of shipping when stored at -20°C.

RefSeq: [NM_182906.1](#)

RefSeq Size: 1788 bp

RefSeq ORF: 951 bp

Locus ID: 10462

UniProt ID: [Q8IUN9](#)

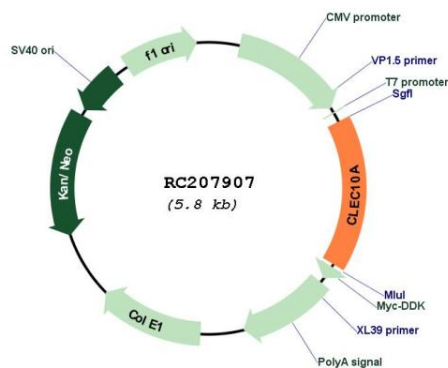
Cytogenetics: 17p13.1

Protein Families: Transmembrane

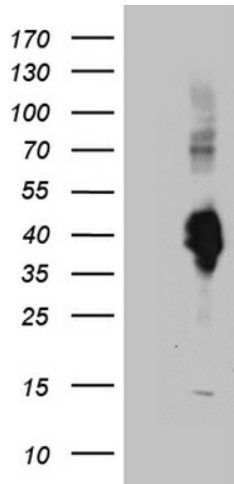
MW: 35.4 kDa

Gene Summary: This gene encodes a member of the C-type lectin/C-type lectin-like domain (CTL/CTLD) superfamily. Members of this family share a common protein fold and have diverse functions, such as cell adhesion, cell-cell signalling, glycoprotein turnover, and roles in inflammation and immune response. The encoded type 2 transmembrane protein may function as a cell surface antigen. Two transcript variants encoding distinct isoforms have been identified for this gene. [provided by RefSeq, Jul 2008]

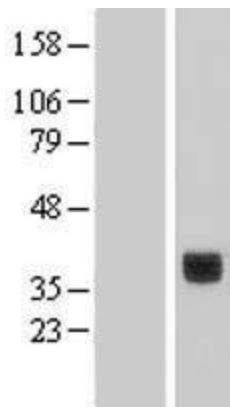
Product images:



Circular map for RC207907



HEK293T cells were transfected with the pCMV6-ENTRY control (Cat# [PS100001], Left lane) or pCMV6-ENTRY CLEC10A (Cat# RC207907, Right lane) cDNA for 48 hrs and lysed. Equivalent amounts of cell lysates (5 ug per lane) were separated by SDS-PAGE and immunoblotted with anti-CLEC10A antibody (Cat# [TA810180]). Positive lysates [LY405320] (100ug) and [LC405320] (20ug) can be purchased separately from OriGene.



Western blot validation of overexpression lysate (Cat# [LY405320]) using anti-DDK antibody (Cat# [TA50011-100]). Left: Cell lysates from untransfected HEK293T cells; Right: Cell lysates from HEK293T cells transfected with RC207907 using transfection reagent MegaTran 2.0 (Cat# [TT210002]).