

## Product datasheet for RC207905

### alpha 2 Macroglobulin (A2M) (NM\_000014) Human Tagged ORF Clone

#### Product data:

Product Type:	Expression Plasmids
Product Name:	alpha 2 Macroglobulin (A2M) (NM_000014) Human Tagged ORF Clone
Tag:	Myc-DDK
Symbol:	alpha 2 Macroglobulin
Synonyms:	A2MD; CPAMD5; FWP007; S863-7
Mammalian Cell Selection:	Neomycin
Vector:	pCMV6-Entry (PS100001)
E. coli Selection:	Kanamycin (25 ug/mL)
ORF Nucleotide Sequence:	>RC207905 ORF sequence Red=Cloning site Blue=ORF Green=Tags(s)

TTTTGTAATACGACTCACTATAGGGCGGCCGGAATTCGTCGACTGGATCCGGTACCGAGGAGATCTGCC  
GCC**CGATCGCC**

ATGGGGAAGAACAACCTCTTCATCCAAGTCTGGTTCTTCTCCTCTTGGTCTCTGCCACAGACGCCT  
CAGTCTCTGAAAACCGCAGTATATGGTCTGGTCCCCTCCCTGCTCCACTGAGACACTGAGAAGGG  
CTGTGCTCTTCTGAGCTACCTGAATGAGACAGTACTGTAAGTGTCTTCTGGAGTCTGTCAGGGGAAAC  
AGGAGCCTCTTCACTGACCTGGAGCGGAGAATGACGTACTCCACTGTGTCGCCTTCGCTGTCCAAAGT  
CTTCATCCAATGAGGAGTAATGTTCTCACTGTCCAAGTGAAAGGACCAACCAAGAATTAAGAAGCG  
GACCACAGTGATGGTTAAGAACGAGGACAGTCTGGTCTTGTCCAGACAGACAAATCAATCTACAAACCA  
GGCAGACAGTGAAATTCGTGTTGTCTCCATGGATGAAAACCTTCCACCCCTGAATGAGTTGATCCAC  
TAGTATACATTCAGGATCCCAAAGGAAATCGCATCGCACAATGGCAGAGTTTCCAGTTAGAGGGTGGCCT  
CAAGCAATTTTCTTTCCCTCTCATCAGAGCCCTTCCAGGGCTCCTACAAGGTGGTGGTACAGAAGAAA  
TCAGGTGGAAGGACAGAGCACCCCTTCCCGTGGAGGAATTTGTTCTTCCCAAGTTTGAAGTACAAGTAA  
CAGTGCCAAAGATAATCACCATCTTGAAGAAGAGATGAATGTATCAGTGTGGCCTATACACATATGG  
GAAGCCTGTCCCTGGACATGTGACTGTGAGCATTGCGAGAAAGTATAGTGACGCTCCGACTGCCACGGT  
GAAGATTCACAGGCTTTCTGTGAGAAATTCAGTGGACAGCTAAACAGCCATGGCTGCTTCTATCAGCAAG  
TAAAAACCAAGGTCTTCCAGCTGAAGAGGAAGGAGTATGAAATGAAACTTCACACTGAGGCCAGATCCA  
AGAAGAAGGAACAGTGGTGAATTGACTGGAAGGCACTCCAGTGAATCACAAGAACCATAACCAAACCTC  
TCATTTGTGAAAGTGGACTCACACTTTCGACAGGGAATCCCTTCTTTGGGCAGGTGCGCCTAGTAGATG  
GGAAAGGCGTCCCTATACCAATAAAGTCATATTCATCAGAGGAAATGAAGCAAACCTATTACTCCAATGC  
TACCACGGATGAGCATGGCCTTGTACAGTTCTCTATCAACACCACCAATGTTATGGGTACCTCTCTTACT  
GTTAGGGTCAATTACAAGGATCGTAGTCCCTGTTACGGCTACCAGTGGGTGTCAGAAGAACCGAAGAGG  
CACATCACACTGCTTATCTTGTGTTCTCCCAAGCAAGAGCTTTGTCCACCTTGAGCCCATGTCTCATGA  
ACTACCCTGTGGCATACTCAGACAGTCCAGGCACATTATATTCTGAATGGAGGCACCCTGCTGGGGCTG



[View online »](#)

AAGAAGCTCTCCTTCTATTATCTGATAATGGCAAAGGGAGGCATTGTCCGAACCTGGGACTCATGGACTGC  
TTGTGAAGCAGGAAGACATGAAGGGCCATTTTTCCATCTCAATCCCTGTGAAGTCAGACATTGCTCCTGT  
CGCTCGGTTGCTCATCTATGCTGTTTTACCTACCGGGGACGTGATTGGGGATTCTGCAAAATATGATGTT  
GAAAATTTGCTGGCCAACAAGGTGGATTGAGCTTCAGCCCATCACAAGTCTCCAGCCTCACACGCCC  
ACCTGCGAGTCACAGCGGCTCCTCAGTCCGTCTGCGCCCTCCGTGCTGTGGACCAAGCGTGTGCTCAT  
GAAGCCTGATGCTGAGCTCTCGGCGTCTCGGTTTACAACCTGCTACCAGAAAAGGACCTCACTGGCTTC  
CCTGGCCCTTTGAATGACCAGGACGATGAAGACTGCATCAATCGTCATAATGTCTATATTAATGGAATCA  
CATATACTCCAGTATCAAGTACAAATGAAAAGGATATGTACAGCTTCTAGAGGACATGGGCTTAAAGGC  
ATTCACCAACTCAAAGATTCGTAACCCAAAATGTGTCCACAGCTTCAACAGTATGAAATGCATGGACCT  
GAAGGTCTACGTGTAGGTTTTATGAGTCAGATGTAATGGGAAGAGGCCATGCACGCCTGGTGCATGTTG  
AAGAGCCTCACACGGAGACCGTACGAAAGTACTCCCTGAGACATGGATCTGGGATTTGGTGGTAA  
CTCAGCAGGTGTGGCTGAGGTAGGAGTAACAGTCCCTGACACCATCACCGAGTGAAGGCAGGGGCTTC  
TGCTGTCTGAAGATGCTGGACTTGGTATCTCTCCACTGCCTCTCTCCGAGCCTCCAGCCCTCTTTG  
TGGAGCTACAATGCCTACTCTGTGATTCTGTGGAGAGGCCTTCACTCAAGGCCACGGTCTAAACTA  
CCTTCCAAAATGCATCCGGGTGAGTGTGACAGTGAAGCCTCTCCCGCCTCCTAGCTGTCCAGTGGAG  
AAGGAACAAGCGCCTCACTGCATCTGTGCAAAACGGGCGGCAAACTGTGTCTGGGAGTAACCCCAAAGT  
CATTAGGAAATGTGAATTCAGTGTGAGCGCAGAGGCACTAGAGTCTCAAGAGCTGTGTGGGACTGAGGT  
GCCTTCAGTTCCTGAACACGGAAGGAAAGACACAGTCAACAAGCCTCTGTTGGTTGAACCTGAAGGACTA  
GAGAAGGAAACAACATCAACTCCCTACTTTGTCCATCAGGTGGTGAAGTTTCTGAAGAATTATCCCTGA  
AACTGCCACCAATGTGGTAGAAGAATCTGCCGAGCTTCTGTCTCAGTTTTGGGAGACATATTAGGCTC  
TGCCATGCAAAACACAAAAATCTTCCAGATGCCCTATGGCTGTGGAGAGCAGAATATGGTCTCTTT  
GCTCCTAACATCTATGTACTGGATTATCTAAATGAAACACAGCAGCTTACTCCAGAGTCAAGTCCAAGG  
CCATTTGGCTATCTCAACTGGTTACCAGAGCAGTTGAACTACAAACACTATGATGGCTCTACAGCAGC  
CTTTGGGAGCGATATGGCAGGAACAGGGCAACCTGGCTCACAGCCTTTGTTCTGAAGACTTTTGCC  
CAAGCTCGAGCCTACATCTTCATCGATGAAGCACACATTACCCAAGCCCTCATATGGCTCTCCAGAGGC  
AGAAGGACAATGGCTGTTTCAGGAGCTCTGGTCACTGCTCAACAATGCCATAAAGGGAGGAGTAGAAGA  
TGAAGTGACCCTCTCCGCTATATCACCATCGCCCTTCTGGAGATTCTCTCACAGTCACTACCCTGTT  
GTCCGCAATGCCCTGTTTTGCCTGGAGTCAAGCCTGGAAGACAGCACAAGAAGGGGACCATGGCAGCCATG  
TATATAACAAAGCACTGCTGGCCTATGCTTTTGCCTGGCAGGTAAACAGGACAAGGAAGGAAGTACT  
CAAGTCACTTAATGAGGAAGCTGTGAAGAAAGACAACCTGTCCATTGGGAGCGCCCTCAGAAACCAAG  
GCACCAGTGGGCATTTTTACGAACCCAGGCTCCCTCTGCTGAGGTGGAGATGACATCCTATGTGCTCC  
TCGCTTATCTCACGGCCAGCCAGCCCAACCTCGGAGGACCTGACCTCTGCAACCAACATCGTGAAGTG  
GATCACGAAGCAGCAGAATGCCAGGGCGGTTTCTCTCCACCCAGGACACAGTGGTGGCTCTCCATGCT  
CTGTCCAAATATGGAGCAGCCACATTTACCAGGACTGGGAAGGCTGCACAGGTGACTATCCAGTCTTCAG  
GGACATTTTCCAGCAATTTCAAGTGGACAACAACCGCCTGTTACTGCAGCAGGTCTCATTGCCAGA  
GCTGCCTGGGGAATACAGCATGAAAGTGACAGGAGAAGGATGTGTCTACCTCCAGACATCCTTGAATAC  
AATATTCTCCAGAAAAGGAAGATTCCCTTTGCTTTAGGAGTGCAGACTCTGCCTCAAACCTGTGATG  
AACCCAAAGCCCACACCAGCTTCCAATCTCCCTAAGTGTGAGTACACAGGGAGCCGCTCTGCCTCCAA  
CATGGCGATCGTTGATGTGAAGATGGTCTCTGGCTTCAATCCCTGAAGCCAACAGTGAAGTGTGAA  
AGATCTAACCATGTGAGCCGGACAGAAGTCAAGCAGCAACCATGTCTTGATTTACCTTGATAAGGTGCAA  
ATCAGACACTGAGCTTGTCTTACGGTTCTGCAAGATGTCCAGTAAGAGATCTGAAACAGCCATAGT  
GAAAGTCTATGATTACTACGAGACGGATGAGTTTGCAATTGCTGAGTACAATGCTCCTTGCAGCAAAGAT  
CTTGAAATGCT

ACGCGTACGCGGCGCTCGAGCAGAACTCATCTCAGAAGAGGATCTGGCAGCAATGATATCCTGGATT  
ACAAGGATGACGACGATAAGGTTTAA

Protein Sequence: >RC207905 protein sequence  
 Red=Cloning site Green=Tags(s)

```

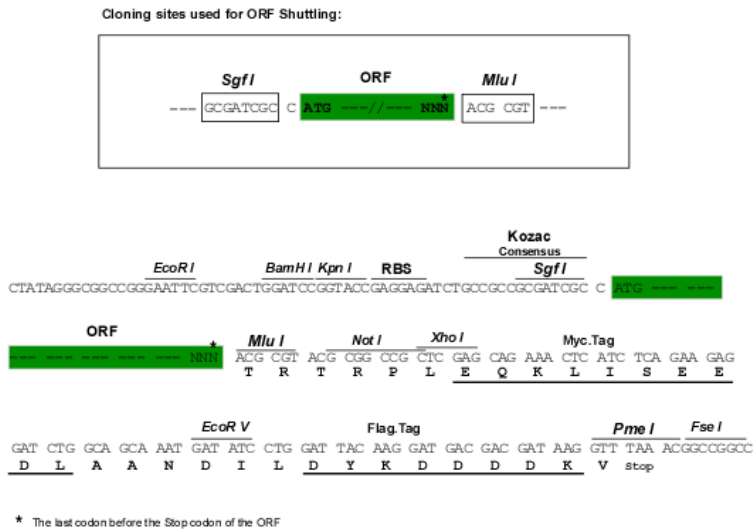
MGKNKLLHPSLVLLLLVLLPTDASVSGKPQYMVLVPSLLHTETTEKGCVLLSYLNETVTVSASLESVRGN
RSLFTDLEAENDVLHCVAFAVPKSSSNEEVMFLTVQVKGPTQEFKRRTTVMVKNEDSLVFVQTDKSIYKP
GQTVKFRVVSMDENFHLNELIPLVYIQDPKGNRIAQWQSFQLEGLKQFSFPLSSEPFQGSYKVVVQKK
SGGRTEHPFTVEEFVLPKFEVQVTPKIIITILEEEMNVSVCGLYTYGKVPVGHVTVSICRKYSDASDCHG
EDSQAFCEKFSGQLNSHGCFYQQVTKVFLKRKEYEMKLHTEAQIQEEGTVELTGRQSSEITRTITKL
SFVKVDSHFRQGIPIFFGQVRLVDGKGVPIPNKVIIFIRGNEANYYSNATTDEHGLVQFSINTTNVMGTSLT
VRVNYKDRSPCYGYQWVSEEHEEAHTAYLVFSPSKSFVHLEPMSHELPCGHTQTVQAHYILNGTLLGL
KKLSFYLLIMAKGGIVRTGTHGLLVKQEDMKGHFSISIPVKSIDIAPVARLLIYAVLPTGDVIGDSAKYDV
ENCLANKVDLSFSPSQSLPASHAHLRVTAAPQSVCALRAVDQSVLLMKPDAELASSVYNLLPEKDLTGF
PGPLNDQDDEDCINRHNVYINGITYTPVSTNEKDMYSFLEDMGLKAFNSKIRKPKMCPQLQQYEMHGP
EGLRVGFYESDVMMGRGHARLVHVEEPTETVRKYFPETWIWDLVVVNSAGVAEVGTVPDTITETWKAGAF
CLSEDAGLGISSTASLRAFQPFVVELTMPYSVIRGEAFTLKATVLNLYPKCIRVSVQLEASPAFLAVPVE
KEQAPHICANGRQTVSWAVTPKSLGNVFTVSAEALSEQELCGTEVPSVPEHGRKDTVIKPLLVPEPEGL
EKETTFNSLLCPSGGEVSEELSLKLPNNVVEESARASVSVLGDILGSAQNTQNLQMPYGCQEQNMVLF
APNIYVLDYLNQQLTPEVKSKAIGYLNQYQRLNYKHVDGYSYTFGERYGRNQNTWLTAFVLKTF
QARAYIFIDEAHITQALIWLSQLKQDNGCFRSSGSLNNAIKGGVEDEVTL SAYITIALLEIPLTVTHPV
VRNALFCELSAWKTAQEGDHGSHVYTKALLAYAFALAGNQDKRKEVLKSLNEEAVKKNDSVHWERPQKPK
APVGHFYEPQAPSAEEMTSYVLLAYLTAQPAPTSDDLTSATNIVKWIQKQNAQGGFSSQDQTVVALHA
LSKYGAATFTRTGKAAQVTIQSSGTFSSKFQVDNNRLLQQVSLPELPGEYSMKVTEGECVYLQTSKY
NILPEKEEFPFALGVQTLPTQCDPEKAHTSFQISLSVSYTGSRASNMAIVDKMVSQGFIPLKPTVKMLE
RSHVSRTEVSSNHVLIYLDKVSNTLSLFFTVLQDVPVRDLKPAIVKVVYDYETDEFAIAEYNAPCSKD
LGNA
  
```

TRTRPLEQKLISEEDLAANDILDYKDDDDKV

Chromatograms: [https://cdn.origene.com/chromatograms/mk6261\\_h02.zip](https://cdn.origene.com/chromatograms/mk6261_h02.zip)

Restriction Sites: SgfI-MluI

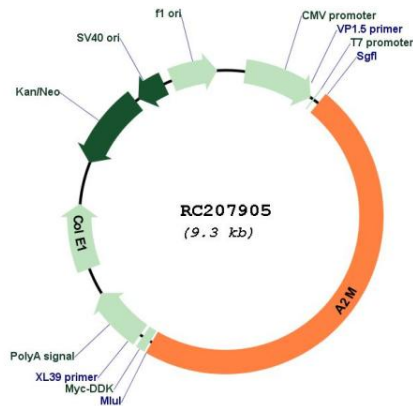
Cloning Scheme:



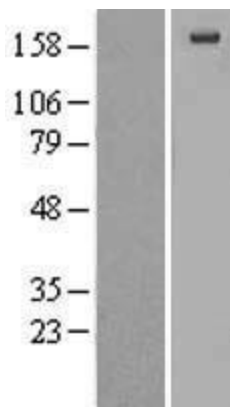
ACCN: NM\_000014

<b>ORF Size:</b>	4422 bp
<b>OTI Disclaimer:</b>	The molecular sequence of this clone aligns with the gene accession number as a point of reference only. However, individual transcript sequences of the same gene can differ through naturally occurring variations (e.g. polymorphisms), each with its own valid existence. This clone is substantially in agreement with the reference, but a complete review of all prevailing variants is recommended prior to use. <a href="#">More info</a>
<b>OTI Annotation:</b>	This clone was engineered to express the complete ORF with an expression tag. Expression varies depending on the nature of the gene.
<b>Components:</b>	The ORF clone is ion-exchange column purified and shipped in a 2D barcoded Matrix tube containing 10ug of transfection-ready, dried plasmid DNA (reconstitute with 100 ul of water).
<b>Reconstitution Method:</b>	<ol style="list-style-type: none"><li>1. Centrifuge at 5,000xg for 5min.</li><li>2. Carefully open the tube and add 100ul of sterile water to dissolve the DNA.</li><li>3. Close the tube and incubate for 10 minutes at room temperature.</li><li>4. Briefly vortex the tube and then do a quick spin (less than 5000xg) to concentrate the liquid at the bottom.</li><li>5. Store the suspended plasmid at -20°C. The DNA is stable for at least one year from date of shipping when stored at -20°C.</li></ol>
<b>RefSeq:</b>	<a href="#">NM_000014.6</a>
<b>RefSeq Size:</b>	4678 bp
<b>RefSeq ORF:</b>	4425 bp
<b>Locus ID:</b>	2
<b>UniProt ID:</b>	<a href="#">P01023</a>
<b>Cytogenetics:</b>	12p13.31
<b>Domains:</b>	A2M, A2M_N
<b>Protein Families:</b>	Druggable Genome, Secreted Protein
<b>Protein Pathways:</b>	Complement and coagulation cascades
<b>MW:</b>	163.3 kDa
<b>Gene Summary:</b>	The protein encoded by this gene is a protease inhibitor and cytokine transporter. It uses a bait-and-trap mechanism to inhibit a broad spectrum of proteases, including trypsin, thrombin and collagenase. It can also inhibit inflammatory cytokines, and it thus disrupts inflammatory cascades. Mutations in this gene are a cause of alpha-2-macroglobulin deficiency. This gene is implicated in Alzheimer's disease (AD) due to its ability to mediate the clearance and degradation of A-beta, the major component of beta-amyloid deposits. A related pseudogene, which is also located on the p arm of chromosome 12, has been identified. [provided by RefSeq, Nov 2016]

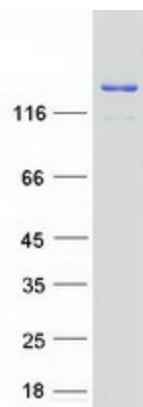
Product images:



Circular map for RC207905



Western blot validation of overexpression lysate (Cat# [LY424975]) using anti-DDK antibody (Cat# [TA50011-100]). Left: Cell lysates from untransfected HEK293T cells; Right: Cell lysates from HEK293T cells transfected with RC207905 using transfection reagent MegaTran 2.0 (Cat# [TT210002]).



Coomassie blue staining of purified A2M protein (Cat# [TP307905]). The protein was produced from HEK293T cells transfected with A2M cDNA clone (Cat# RC207905) using MegaTran 2.0 (Cat# [TT210002]).