

Product datasheet for RC207904

EHF (NM_012153) Human Tagged ORF Clone

Product data:

Product Type:	Expression Plasmids
Product Name:	EHF (NM_012153) Human Tagged ORF Clone
Tag:	Myc-DDK
Symbol:	EHF
Synonyms:	ESE3; ESE3B; ESEJ
Mammalian Cell Selection:	Neomycin
Vector:	pCMV6-Entry (PS100001)
E. coli Selection:	Kanamycin (25 ug/mL)
ORF Nucleotide Sequence:	>RC207904 ORF sequence Red=Cloning site Blue=ORF Green=Tags(s)

TTTTGTAATACGACTCACTATAGGGCGCCGGGAATTCGTCGACTGGATCCGGTACCGAGGAGATCTGCC
GCC**CGATCGCC**

ATGATTCTGGAAGGAGGTGGTGAATGAATCTCAACCCCGCAACAACCTCCTTCACCAGCCGCGCAGCT
GGACAGACAGCTACTCCACGTGCAATGTTCCAGTGGGTTTTTTGGAGGCCAGTGGCATGAAATTCATCC
TCAGTACTGGACCAAGTACCAGGTGTGGGAGTGGCTCCAGCACCTCCTGGACCAACCAGCTGGATGCC
AATTGTATCCCTTTCCAAGATTTCGACATCAACGGCGAGCACCTCTGCAGCATGAGTTTGCAGGAGTTCA
CCCGGGCGGCAGGGACGGCGGGCAGCTCCTCTACAGCAACTTGCAGCATCTGAAGTGGAAACGGCCAGTG
CAGTAGTGACCTGTTCCAGTCCACACACAATGTCATTGTCAAGACTGAACAACTGAGCCTTCCATCATG
AACACCTGGAAAGACGAGAACTATTTATATGACACCAACTATGGTAGCACAGTAGATTTGTTGGACAGCA
AACTTTCTGCCGGGCTCAGATCTCCATGACAACCACAGTCACCTTCTGTTGCAGAGTCACCTGATAT
GAAAAAGGAGCAAGACCCCTGCCAAGTGCCACACCAAAAAGCACAACCCGAGAGGGACTCACTTATGG
GAATTCATCCGCGACATCCTCTTGAACCCAGACAAGAACCAGGATTAATAAAATGGGAAGACCGATCTG
AGGGCGTCTTCAGGTTCTTGAATCAGAGGCAGTGGCTCAGCTATGGGGTAAAAAGAAGAACAACAGCAG
CATGACCTATGAAAAGCTCAGCCGAGCTATGAGATATTACTACAAAAGAGAAATCTGGAGCGTGTGGAT
GGACGAAGACTGGTATATAAATTTGGGAAGAATGCCCGAGGATGGAGAGAAAAATGAAAAC

ACGCGTACGCGGGCCGCTCGAGCAGAAACTCATCTCAGAAGAGGATCTGGCAGCAAATGATATCCTGGATT
ACAAGGATGACGACGATAAGGTTTAA



[View online »](#)

Protein Sequence: >RC207904 protein sequence
Red=Cloning site Green=Tags(s)

MILEGGGVMLNPGNNLLHQPPAWTDSYSTCNVSSGFFGGQWHEIHPQYWTKYQVWEWLQHLLDTNQLDA
 NCIPFQEFDINGEHLCSMSLQEFTRAAGTAGQLLYSNLQHLKWNQCSSDLFQSTHNVIKTEQTEPSIM
 NTWKDENLYDNYGSTVDLLDSKTFCRAQISMTTSHLPAVESPDMKKEQDPPAKCHTKKHNPGRGTHLW
 EFIRDILLNPDKNPGLIKWEDRSEGVFRFLKSEAVAQLWGKKKNNSSMTYEKLSRAMRYYYKREILERVD
 GRRLVYKFGKNARGWRENEN

TRTRPLEQKLISEEDLAANDILDYKDDDDKV

Chromatograms: https://cdn.origene.com/chromatograms/mk6022_c09.zip

Restriction Sites: SgfI-MluI

Cloning Scheme:



ACCN: NM_012153

ORF Size: 900 bp

OTI Disclaimer: The molecular sequence of this clone aligns with the gene accession number as a point of reference only. However, individual transcript sequences of the same gene can differ through naturally occurring variations (e.g. polymorphisms), each with its own valid existence. This clone is substantially in agreement with the reference, but a complete review of all prevailing variants is recommended prior to use. [More info](#)

OTI Annotation: This clone was engineered to express the complete ORF with an expression tag. Expression varies depending on the nature of the gene.

Components: The ORF clone is ion-exchange column purified and shipped in a 2D barcoded Matrix tube containing 10ug of transfection-ready, dried plasmid DNA (reconstitute with 100 ul of water).

Reconstitution Method:

1. Centrifuge at 5,000xg for 5min.
2. Carefully open the tube and add 100ul of sterile water to dissolve the DNA.
3. Close the tube and incubate for 10 minutes at room temperature.
4. Briefly vortex the tube and then do a quick spin (less than 5000xg) to concentrate the liquid at the bottom.
5. Store the suspended plasmid at -20°C. The DNA is stable for at least one year from date of shipping when stored at -20°C.

RefSeq: [NM_012153.6](#)

RefSeq Size: 5466 bp

RefSeq ORF: 903 bp

Locus ID: 26298

UniProt ID: [Q9NZC4](#)

Cytogenetics: 11p13

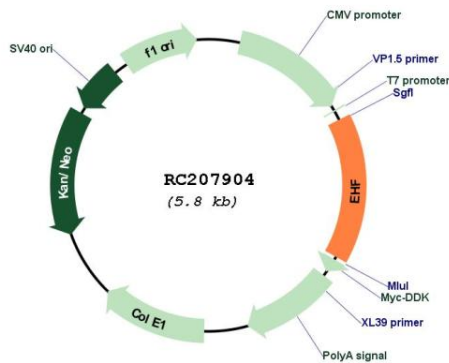
Domains: ETS, SAM_PNT

Protein Families: Transcription Factors

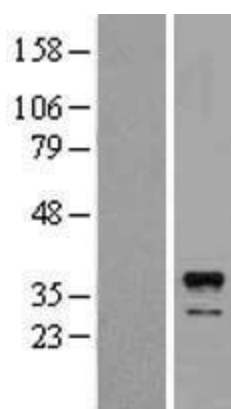
MW: 34.9 kDa

Gene Summary: This gene encodes a protein that belongs to an ETS transcription factor subfamily characterized by epithelial-specific expression (ESEs). The encoded protein acts as a transcriptional repressor and may be involved in epithelial differentiation and carcinogenesis. Three transcript variants encoding different isoforms have been found for this gene. [provided by RefSeq, Jun 2011]

Product images:



Circular map for RC207904



Western blot validation of overexpression lysate (Cat# [LY402161]) using anti-DDK antibody (Cat# [TA50011-100]). Left: Cell lysates from untransfected HEK293T cells; Right: Cell lysates from HEK293T cells transfected with RC207904 using transfection reagent MegaTran 2.0 (Cat# [TT210002]).