

Product datasheet for **RC207900**

ZNF96 (ZSCAN12) (NM_001039643) Human Tagged ORF Clone

Product data:

Product Type:	Expression Plasmids
Product Name:	ZNF96 (ZSCAN12) (NM_001039643) Human Tagged ORF Clone
Tag:	Myc-DDK
Symbol:	ZNF96
Synonyms:	dj29K1.2; KIAA0426; ZFP96; ZFP96, ZNF305, ZNF29K1, ZSCAN12, KIAA0426, dj29K1.2; zinc finger and SCAN domain containing 12; zinc finger protein 96; zinc finger protein 305; ZNF29K1; ZNF96; ZNF305
Mammalian Cell Selection:	Neomycin
Vector:	pCMV6-Entry (PS100001)
E. coli Selection:	Kanamycin (25 ug/mL)



[View online »](#)

ORF Nucleotide Sequence:

>RC207900 ORF sequence
 Red=Cloning site Blue=ORF Green=Tags(s)

TTTTGTAATACGACTCACTATAGGGCGGCCGGAATTCGTCGACTGGATCCGGTACCGAGGAGATCTGCC
 GCC**CGCATCGCC**

ATGGCATCTACTTGGGCTATCCAGGCCACATGGACCAGGATGAACCTTTGGAAGTAAAGATAGAGGAAG
 AGAAATATACCACCAGACAGGATTGGGACTGCGTAAAAACAACACCCATAGCAGAGAGGCTTCCGTCA
 GTACTTCAGACAGTTCTGCTACCAGGAGACATCTGGTCCCGTGAGGCTTTGAGCCGACTCCGAGA
 TGCCATCAGTGGCTGAGGCCAGAGACCCACACAAAGAACAGATTCTGGAGCTGCTGGTCTGGAGCAGT
 TCCTGACCATCTACCTGAGGAGCTCCAGGCCTGGGTGCAGGAGCAGCATCCAGAGAGTGGGAGGAGGT
 GGTGACTGTGCTGGAGGATTTAGAGAGAGAAGTGGATGAACCAGGAGAGCAGGTCTCAGTCCACTG
 GAACAGGAAATGTTCTTGCAGGAGACGGTACGCTACGAAAAGAAGGAGAACCAGTATGTCCTCCAGT
 CCATGAAAGCCAGCCAAAGTATGAATCTCCAGAACTTGAATCCCAACAGGAGCAAGTTTTAGATGTTGA
 GACTGGAATGAGTATGGGAATTTAAAGCAAGAAGTTTCTGAAGAAATGGAACCACATGGGAAGACATCC
 AGTAAATTTGAAATGATATGTCCAAGTCTGCTAGGTGTGGAGAACTCGTGAACCTGAAGAAATAACAG
 AAGAGCCCTCTGCTTGTCCAGAGAAGATAAACAACTACCTGTGATGAAATGGAGTAAGCCTGACTGA
 GAACTCTGACCATACTGAACATCAGAGAATCTGTCCAGGAGAAGAATCTTACGGATGTGATGACTGTGGA
 AAAGCTTTTAGTCAGCACTCACACCTCATAGAATCAGAGGATCCATACTGGAGATAGACCCTACAAAT
 GCGAAGAATGTGGAAAAGCTTTCCGTGGGAGAAGTGTGCTTATTCGACACAAAATAATACACTGGAGA
 GAAACCGTATAAGTGAATGAATGTGGCAAAGCCTTTGGCCGGTGGTCACTCTTAACCAACATCAGAGA
 CTTACACAGGAGAAAAACACTACTGTAATGACTGTGGCAAAGCCTTTAGTCAGAAAGCAGGCCTCT
 TTCACCATATCAAGATCCACACAAGAGACAAACCTTATCAGTGCACCTAGTGAATAAAAAGTTTGTGCG
 GCGTTCCATACTTACTCAGCATCAAGGAGTTCATACCGGCCCAAGCCGATGAGTGAACGAGTGTGGA
 AAAGCCTTTGTTTATAACTCATCCCTTGTTCATCAGGAAATCCACCACAAAGAAAAATGCTATCAGT
 GTAAGGAATGTGGGAAATCCTTCAGTCAGAGTGGCCTTATTCAGCATCAGAGAATTCACACTGGGAAAA
 ACCCTACAAATGTGACGTATGTGAAAAAGCCTTTATTCAAAGGACAAGTCTTACAGAATCAGCGAAT
 CACTGGAGAAAGACCCTATAAATGTGATAAGTGTGGGAAGGCGTTTACTCAAAGATCAGTCTCACGG
 AACATCAGAGAATCCACTGGAGAGAGGCCCTACAAGTGTGATGAGTGTGGGAATGCCTCCGAGGAAT
 CACCAGCCTCATTAGCATCAGAGAATCCACTGGGAGAAAGCCCTACCAATGTGATGAGTGTGGAAAA
 GCCTTCAGACAGGAGAAGACCAGCTACAAGAAATACTTCTGAAAAATCACTCTGAACCCCAAGCTG
 GAGTGAATCTTCTCTGAGCTCTCTCATTCCAGAATGGCAATCTTGTTCAGGAGAGATCTC

ACGCGTACGCGGCCGCTCGAGCAGAAACTCATCTCAGAAGAGGATCTGGCAGCAAATGATATCCTGGATT
 ACAAGGATGACGACGATAAGGTTTAA

Protein Sequence:

>RC207900 protein sequence
 Red=Cloning site Green=Tags(s)

MASTWAIQAHMDQDEPLEVKIEEEKYTTTRQDWDLRKNNTHSREVFQRQYFRQFCYQETSGPREALSRLREL
 CHQWLRPETHKEQILELLVLEQFLTILPEELQAWVQEHPESGEEVTVLEDLERELDEPGEQVSVHTG
 EQEMFLQETVRLRKEGEPMSLSQMSKAQPKYESPELESQQEQVLDVETGNEYGNLQEVSEEMEPHGKTS
 SKFENDMSKSARCGETREPEEITEEPSACSRDKOPTCDENGVSLTENS DHTEHQRI CPGEESYGCDDCG
 KAFSQSHLIEHQRIHTGDRPYKCEECGKAFGRRTVLIRHKIHTGKPYKNECGKAFGRWSALNQHQR
 LHTGKHYHCNDCGKAFSQKAGLFHHIKIHTRDKPYQCTQCNKFSRRLTQHQQVHTGAKPYECNECG
 KAFVYNSSLVSHQEIHHKEKCYQCKECSFSQSLIQHQRIHTGKPYKCDVCEKAFIQRTSLTEHQRI
 HTGERPYKCDKCGKAFTQRSVLTEHQRIHTGERPYKCECGNAFRGITSLIQHQRIHTGKPYQCECGK
 AFRQRKTSYKEILLKNHSEPQAGVNLSSLIPEWQSCFRRDL

TRTRPLEQKLISEEDLAANDILDYKDDDDKV

Chromatograms:

https://cdn.origene.com/chromatograms/mk6343_f06.zip

Restriction Sites: SgfI-MluI

Cloning Scheme:



ACCN: NM_001039643

ORF Size: 1812 bp

OTI Disclaimer: The molecular sequence of this clone aligns with the gene accession number as a point of reference only. However, individual transcript sequences of the same gene can differ through naturally occurring variations (e.g. polymorphisms), each with its own valid existence. This clone is substantially in agreement with the reference, but a complete review of all prevailing variants is recommended prior to use. [More info](#)

OTI Annotation: This clone was engineered to express the complete ORF with an expression tag. Expression varies depending on the nature of the gene.

Components: The ORF clone is ion-exchange column purified and shipped in a 2D barcoded Matrix tube containing 10ug of transfection-ready, dried plasmid DNA (reconstitute with 100 ul of water).

Reconstitution Method:

1. Centrifuge at 5,000xg for 5min.
2. Carefully open the tube and add 100ul of sterile water to dissolve the DNA.
3. Close the tube and incubate for 10 minutes at room temperature.
4. Briefly vortex the tube and then do a quick spin (less than 5000xg) to concentrate the liquid at the bottom.
5. Store the suspended plasmid at -20°C. The DNA is stable for at least one year from date of shipping when stored at -20°C.

RefSeq: [NM_001039643.1](#), [NP_001034732.1](#)

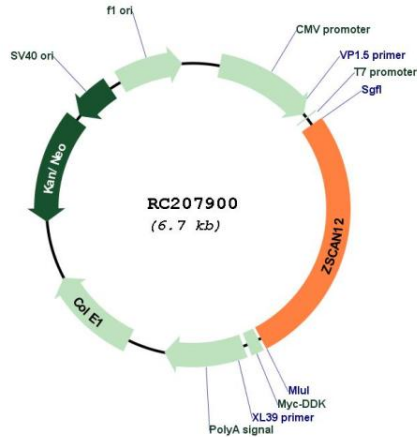
RefSeq Size: 3931 bp

RefSeq ORF: 1814 bp

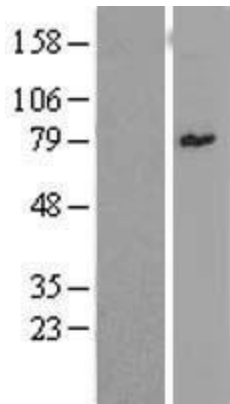
Locus ID: 9753

Cytogenetics: 6p22.1
 Protein Families: Transcription Factors
 MW: 70.2 kDa

Product images:



Circular map for RC207900



Western blot validation of overexpression lysate (Cat# [LY422096]) using anti-DDK antibody (Cat# [TA50011-100]). Left: Cell lysates from untransfected HEK293T cells; Right: Cell lysates from HEK293T cells transfected with RC207900 using transfection reagent MegaTran 2.0 (Cat# [TT210002]).