

## Product datasheet for **RC207899**

### **CHSY1 (NM\_014918) Human Tagged ORF Clone**

#### **Product data:**

Product Type:	Expression Plasmids
Product Name:	CHSY1 (NM_014918) Human Tagged ORF Clone
Tag:	Myc-DDK
Symbol:	CHSY1
Synonyms:	CHSY; ChSy-1; CSS1; TPBS
Mammalian Cell Selection:	Neomycin
Vector:	pCMV6-Entry (PS100001)
E. coli Selection:	Kanamycin (25 ug/mL)



[View online »](#)

**ORF Nucleotide Sequence:**

>RC207899 representing NM\_014918  
 Red=Cloning site Blue=ORF Green=Tags(s)

TTTTGTAATACGACTCACTATAGGGCGGCCGGGAATTCGTCGACTGGATCCGGTACCGAGGAGATCTGCC  
 GCC**CGGATCGCC**

ATGGCCGCGCGCGGCCGGCGCGCCTGGCTCAGCGTGCTGCTCGGGCTCGTCTGGGCTTCGTGCTGGCCT  
 CGCGGCTCGTCTGCCCGGGCTTCCGAGCTGAAGCGAGCGGGCCACGGCGCCGCGCCAGCCCGAGGG  
 CTGCCGGTCCGGGAGGCGGGCGGCTTCCAGGCCGGCGGGGCGCGCGGATGCGCGCGGGGCGCAGCTC  
 TGGCCGCCGGCTCGGACCCAGATGGCGGCCGCGCGACAGGAACCTTCTCTTCGTGGGAGTCATGACCG  
 CCCAGAAATACCTGCAGACTCGGGCCGTGGCCGCCTACAGAACATGGTCCAAGACAATTCCTGGGAAAGT  
 TCAGTTCTTCTCAAGTGAGGGTTCTGACACATCTGTACCAATTCAGTAGTGCCACTACGGGGTGTGGAC  
 GACTCCTACCCGCCCCAGAAGAAGTCCTTCATGATGCTCAAGTACATGCACGACCACTACTTGGACAAGT  
 ATGAATGGTTTATGAGAGCAGATGATGACGTGTACATCAAAGGAGACCGTCTGGAGAACTCCTGAGGAG  
 TTTGAACAGCAGCGAGCCCTCTTCTTGGGCGAGACGGCTGGGCACCACGGAAGAAATGGGAAAAGT  
 GCCTGGAGCCTGGTGAGAACTTCATGATGGGGGGCCTGGCGTGATCATGAGCCGGGAGGTGCTTCGGA  
 GAATGGTGCCGCACATTGGCAAGTGTCTCCGGGAGATGTACACCACCCATGAGGACGTGGAGGTGGGAA  
 GTGTGTCCGGAGGTTTGCAGGGGTGCAGTGTGTCTGGTCTTATGAGATGCAGCAGCTTTTTTATGAGAAT  
 TACGAGCAGAAAAGGGGTACATTAGAGATCTCCATAACAGTAAAATTCACCAAGCTATCACATTAC  
 ACCCAACAAAACCCACCCTACCAGTACAGGCTCCACAGCTACATGCTGAGCCGCAAGATATCCGAGCT  
 CCGCCATCGCACAAATACAGCTGCACCGGAAATGTCTGATGAGCAAAACAGCAACACAGAAATTCAT  
 AAAGAGGACCTCCAGCTGGGAATCCCTCCCTCTTCATGAGGTTTCAGCCCCGCCAGCGAGAGGAGATTC  
 TGGAAATGGGAGTTTCTGACTGGAAAATACTTGTATTCGGCAGTTGACGGCCAGCCCTCGAAGAGGAAT  
 GGACTCCGCCCAGAGGGAAGCCTTGACAGCATTGTTCATGCAGGTCATGGAGATGATCAATGCCAACGCC  
 AAGACCAGAGGGCGCATATTGACTTCAAAGAGATCCAGTACGGCTACCGCCGGTGAACCCATGTATG  
 GGGCTGAGTACATCCTGGACCTGCTGCTTCTGTACAAAAGCACAAGGGGAAAGAAATGACGGTCCCTGT  
 GAGGAGGCACGCGTATTTACAGCAGACTTTCAGCAAAATCCAGTTTGTGGAGCATGAGGAGCTGGATGCA  
 CAAGAGTTGGCCAAGAGAATCAATCAGGAATCTGGATCCTTGTCTTTCTCTCAAACCTCCCTGAAGAAGC  
 TCGTCCCTTTCAGCTCCCTGGTGAAGAGTGAAGCACAAGAACCCAAAGATAAAAAGATAAACATACT  
 GATTCTTTGTCTGGGCGTTTCGACATGTTTGTGAGATTTATGGGAAACTTTGAGAAGACGTGTCTTATC  
 CCCAATCAGAACGTCAAGCTCGTGGTCTGCTTTTCAATTCTGACTCCAACCCTGACAAGGCCAAACAAG  
 TTGAAGTATGAGAGATTACCGCATTAAAGTACCCTAAAGCCGACATGCAGATTTTGCCTGTGTCTGGAGA  
 GTTTTCAAGAGCCCTGGCCCTGGAAGTAGGATCCTCCAGTTTAAACAATGAATCTTTGCTCTTCTCTGC  
 GACGTCGACCTCGTGTACTACAGAAATCCTTCAGCGATGTCGAGCAAAACAGTTCTGGGCAACAAA  
 TATATTTTCCAATCATCTTCAGCCAGTATGACCCAAAGATTGTTTATAGTGGGAAAGTTCCCAAGTACAA  
 CCATTTTGCTTTACTCAGAAAAGTGGCTTCTGGAGAAACTATGGGTTTGGCATCACGTGATTTATAAG  
 GGAGATCTTGTCCGAGTGGTGGCTTTGATGTTTCCATCCAAGGCTGGGGCTGGAGGATGTGGACCTTT  
 TCAACAAGTTGTCCAGGCAGTTTGAAGACGTTTAGGAGCCAGGAAGTAGGAGTAGTCCACGTCCACCA  
 TCCTGTCTTTGTGATCCCAATCTTGACCCAAACAGTACAAAATGTGCTTGGGGTCCAAGCATCGACC  
 TATGGGTCCACCCAGCAGCTGGCTGAGATGTGGCTGGAAAAAATGATCCAAGTTACAGTAAAAGCAGCA  
 ATAATAATGGCTCAGTGAGGACAGCC

AC**CGGCCCGC**TCGAGCAGAAACTCATCTCAGAAGAGGATCTGGCAGCAAATGATATCCTGGA  
 TTACAAGGATGACGACGATAAGGTTTAA

**Protein Sequence:** >RC207899 representing NM\_014918  
Red=Cloning site Green=Tags(s)

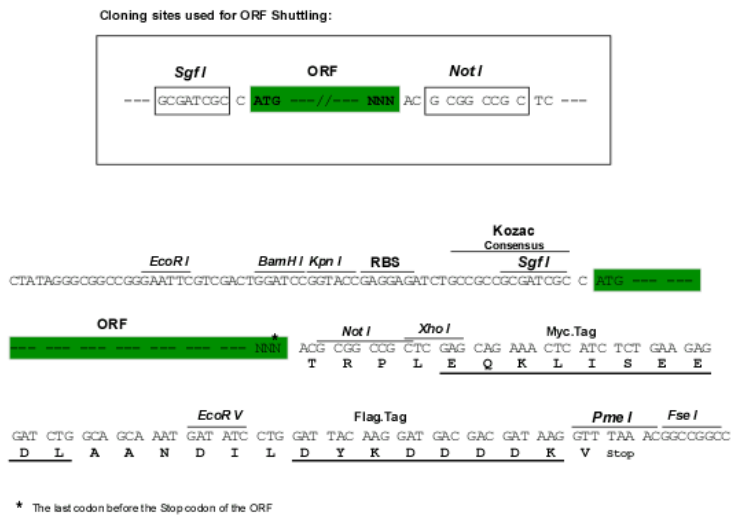
MAARGRAWL SVLLGLV LGFV LASRLVLPRA SELKRAGPRRRASPEGCRSGQAAA SQAGGARGDARGAQL  
WPPGSDPDGGPRDRNFLFVGVMTAQKYLQTRAVAAAYRTWSKTIPGKVQFFSSEGS DTSVP IPVVPLRGVD  
DSYPPQKK SFMMLKYMHDHYLDKYEFMRADDDVYIKGDRENLRLSLNSSEPLFLGQTGLGTTEEMGKL  
ALEPGENFCMGGPGVIMSREVLRRMVP HIGKCLREMYTTHEDEVGRCVRRFAGVQC VWSYEMQQLFYEN  
YEQNKKG YIRDLHNSKIHQAITLHPNKNPPYQYRLHSYMLSRKISELRHRTIQLHREIVLMSKYSNTEIH  
KEDLQLGIPPSFMRFPQRQREEILEWEFLT GKYL YSAVDGQPPRRGMDSAQREALDDIVMQVMEMINANA  
KTRGRIIDFKEIQGYRRVNP MYGAEYILD LLLL YKHKHGKMTVPVRRHAYLQQTF SKIQFVEHEELDA  
QELAKRINQESGSL SFLSNLKKLV PFQLPGSKSEHKPKDKKINIL IPLSGRFDMFVRFMGNFEKTCLI  
PNQNVKLVLLFNSDSNPDKAKQVELMRDYRIKYPKADMQILPVSGEFSRALALEVGSSQFNNESLLFFC  
DVDLVFTTEFLQRCRANTVLGQQIYFPIIFSQYDPKIVYSGKVPSDNHFAFTQKTGFWRNYGFGITCIYK  
GDLVRVGGFDVSIQGWLE DVDFNKVVQAGLKTFRSQEVGVVHVHPVFCDPNLDPKQYKMCLGSKAST  
YGSTQQLAEMWLEKNDPSYSKSSNNNGSVRTA

TRRLEQKLI SEEDLAANDILDYKDDDDKV

**Chromatograms:** [https://cdn.origene.com/chromatograms/mk8113\\_e04.zip](https://cdn.origene.com/chromatograms/mk8113_e04.zip)

**Restriction Sites:** Sgfl-NotI

Cloning Scheme:



ACCN: NM\_014918

ORF Size: 2406 bp

OTI Disclaimer: The molecular sequence of this clone aligns with the gene accession number as a point of reference only. However, individual transcript sequences of the same gene can differ through naturally occurring variations (e.g. polymorphisms), each with its own valid existence. This clone is substantially in agreement with the reference, but a complete review of all prevailing variants is recommended prior to use. [More info](#)

OTI Annotation: This clone was engineered to express the complete ORF with an expression tag. Expression varies depending on the nature of the gene.

Components: The ORF clone is ion-exchange column purified and shipped in a 2D barcoded Matrix tube containing 10ug of transfection-ready, dried plasmid DNA (reconstitute with 100 ul of water).

**Reconstitution Method:**

1. Centrifuge at 5,000xg for 5min.
2. Carefully open the tube and add 100ul of sterile water to dissolve the DNA.
3. Close the tube and incubate for 10 minutes at room temperature.
4. Briefly vortex the tube and then do a quick spin (less than 5000xg) to concentrate the liquid at the bottom.
5. Store the suspended plasmid at -20°C. The DNA is stable for at least one year from date of shipping when stored at -20°C.

**RefSeq:** [NM\\_014918.5](#)

**RefSeq Size:** 4567 bp

**RefSeq ORF:** 2409 bp

**Locus ID:** 22856

**UniProt ID:** [Q86X52](#)

**Cytogenetics:** 15q26.3

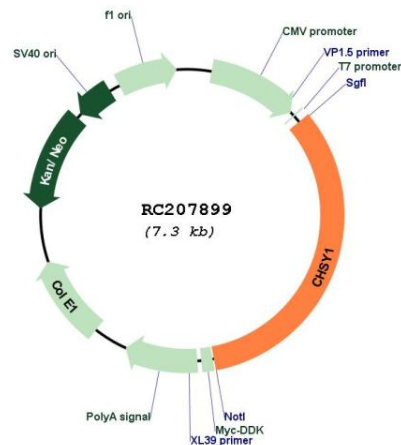
**Protein Families:** Transmembrane

**Protein Pathways:** Chondroitin sulfate biosynthesis, Metabolic pathways

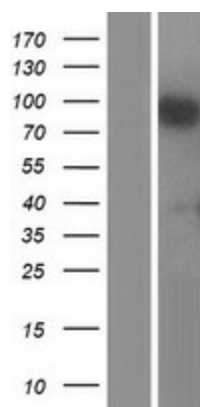
**MW:** 91.8 kDa

**Gene Summary:** This gene encodes a member of the chondroitin N-acetylgalactosaminyltransferase family. These enzymes possess dual glucuronyltransferase and galactosaminyltransferase activity and play critical roles in the biosynthesis of chondroitin sulfate, a glycosaminoglycan involved in many biological processes including cell proliferation and morphogenesis. Decreased expression of this gene may play a role in colorectal cancer, and mutations in this gene are a cause of temtamy preaxial brachydactyly syndrome. [provided by RefSeq, Dec 2011]

### Product images:



Circular map for RC207899



Western blot validation of overexpression lysate (Cat# [LY414926]) using anti-DDK antibody (Cat# [TA50011-100]). Left: Cell lysates from untransfected HEK293T cells; Right: Cell lysates from HEK293T cells transfected with RC207899 using transfection reagent MegaTran 2.0 (Cat# [TT210002]).