

Product datasheet for **RC207883**

GPR86 (P2RY13) (NM_176894) Human Tagged ORF Clone

Product data:

Product Type:	Expression Plasmids
Product Name:	GPR86 (P2RY13) (NM_176894) Human Tagged ORF Clone
Tag:	Myc-DDK
Symbol:	GPR86
Synonyms:	FKSG77; GPCR1; GPR86; GPR94; P2Y13; SP174
Mammalian Cell Selection:	Neomycin
Vector:	pCMV6-Entry (PS100001)
E. coli Selection:	Kanamycin (25 ug/mL)
ORF Nucleotide Sequence:	>RC207883 ORF sequence Red=Cloning site Blue=ORF Green=Tags(s)

TTTTGTAATACGACTCACTATAGGGCGGCCGGAATTCGTCGACTGGATCCGGTACCGAGGAGATCTGCC
GCC**CGATCGC**C

ATGAACACCACAGTGATGCAAGGCTTCAACAGATCTGAGCGGTGCCCCAGAGACTCGGATAGTACAGC
TGGTATCCCAGCCCTACACAGTGGTTTTCTGACCGGCATCCTGCTGAATACTTTGGCTCTGTGGGT
GTTTGTTCACATCCCAGCTCCTCCACCTCATCATCTACCTCAAAAACACTTTGGTGGCCGACTTGATA
ATGACTCATGCTTCTTTCAAATCCTCTGACTCACACCTGGCACCTGGCAGCTCAGAGCTTTTG
TGTGTCGTTTTCTCGGTGATATTTATGAGACCATGTATGTGGCATCGTGTGTTAGGGCTCATAGC
CTTTGACAGATTCCTCAAGATCATCAGACCTTTGAGAAATATTTTCTAAAAAACCTGTTTTGCAAAA
ACGGTCTCAATCTTCATCTGTTCTTTTTGTTCTTCATCTCCCTGCCAAATATGATCTTGAGCAACAAGG
AAGCAACACCATCGTCTGTGAAAAAGTGTCTTCTTAAAGGGCCCTCTGGGGCTGAAATGGCATCAAAT
GGTAAATAACATATGCCAGTTTATTTCTGGACTGTTTTATCCTAATGCTTGTGTTTTATGTGTTATT
GCAAAAAAGTATATGATTCTTAGAAAGTCCAAAGTAAGGACAGAAAAACAACAAAAGCTGGAAG
GCAAAGTATTTGTGTCGTGGCTGTCTTCTTTGTGTGTTTTGCTCCATTCATTTGCCAGATTCATA
TACTCACAGTCAAACCAACAATAAGACTGACTGTAGACTGCAAAATCAACTGTTTATTGCTAAAGAAACA
ACTCTCTTTTGGCAGCAACTAACATTTGTATGGATCCCTAATATACATATTCTTATGTAAAAAATTCA
CAGAAAAGCTACCATGTATGCAAGGGAGAAAGACCACAGCATCAAGCCAAGAAAATCATAGCAGTCAGAC
AGACAACATAACCTTAGGC

ACGCGTACGCGGCCGCTCGAGCAGAAACTCATCTCAGAAGAGGATCTGGCAGCAAATGATATCCTGGATT
ACAAGGATGACGACGATAAGGTTTAA



[View online »](#)

Protein Sequence: >RC207883 protein sequence
 Red=Cloning site Green=Tags(s)

MNTTVMQGFNRSERCPDRTRIVQLVFPALYTVVFLTGILLNLTALWVVFHIPPSSSTFIIYLKNTLVADLI
 MTLMLPFKILSDSHLAPWQLRAFVCRFSSVIFYETMYVGI VLLGLIAFDRFLKII RPLRNIFLKKPVFAK
 TVSIFIWFLLFFISLPMILSNKEATPSSVKKCASLKGPLGLKWHQMNNICQFIFWTVFILMLVFVVVI
 AKKVYDSYRKS KSKDRKNNKLEGVFVVAVFVCFAPFHFARVPYTHSQTNNTDCRLQNLFI AKET
 TLFLAATNICMDPLIYIFLCKKFTEKLPCMQRKTTASSQENHSSQTDNITLG

TRTRPLEQKLISEEDLAANDILDYKDDDDKV

Chromatograms: https://cdn.origene.com/chromatograms/mk6343_c04.zip

Restriction Sites: SgfI-MluI

Cloning Scheme:

Cloning sites used for ORF Shuttling:



* The last codon before the Stop codon of the ORF

ACCN: NM_176894

ORF Size: 999 bp

OTI Disclaimer: The molecular sequence of this clone aligns with the gene accession number as a point of reference only. However, individual transcript sequences of the same gene can differ through naturally occurring variations (e.g. polymorphisms), each with its own valid existence. This clone is substantially in agreement with the reference, but a complete review of all prevailing variants is recommended prior to use. [More info](#)

OTI Annotation: This clone was engineered to express the complete ORF with an expression tag. Expression varies depending on the nature of the gene.

Components: The ORF clone is ion-exchange column purified and shipped in a 2D barcoded Matrix tube containing 10ug of transfection-ready, dried plasmid DNA (reconstitute with 100 ul of water).

Reconstitution Method:

1. Centrifuge at 5,000xg for 5min.
2. Carefully open the tube and add 100ul of sterile water to dissolve the DNA.
3. Close the tube and incubate for 10 minutes at room temperature.
4. Briefly vortex the tube and then do a quick spin (less than 5000xg) to concentrate the liquid at the bottom.
5. Store the suspended plasmid at -20°C. The DNA is stable for at least one year from date of shipping when stored at -20°C.

RefSeq: [NM_176894.1](#), [NP_795713.1](#)

RefSeq Size: 2769 bp

RefSeq ORF: 1065 bp

Locus ID: 53829

UniProt ID: [Q9BPV8](#)

Cytogenetics: 3q25.1

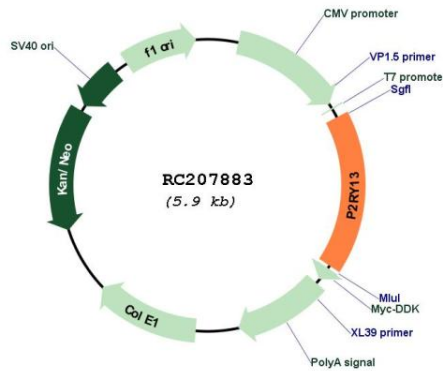
Protein Families: Druggable Genome, GPCR, Transmembrane

Protein Pathways: Neuroactive ligand-receptor interaction

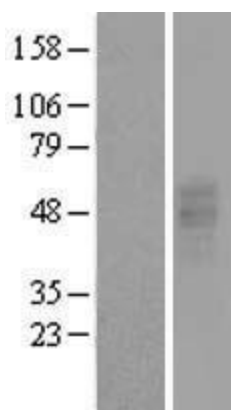
MW: 38.4 kDa

Gene Summary: The product of this gene belongs to the family of G-protein coupled receptors. This family has several receptor subtypes with different pharmacological selectivity, which overlaps in some cases, for various adenosine and uridine nucleotides. This receptor is activated by ADP. [provided by RefSeq, Sep 2008]

Product images:



Circular map for RC207883



Western blot validation of overexpression lysate (Cat# [LY406146]) using anti-DDK antibody (Cat# [TA50011-100]). Left: Cell lysates from untransfected HEK293T cells; Right: Cell lysates from HEK293T cells transfected with RC207883 using transfection reagent MegaTran 2.0 (Cat# [TT210002]).