

## Product datasheet for RC207877

### FASTK (NM\_033015) Human Tagged ORF Clone

#### Product data:

Product Type: Expression Plasmids  
 Product Name: FASTK (NM\_033015) Human Tagged ORF Clone  
 Tag: Myc-DDK  
 Symbol: FASTK  
 Synonyms: FAST  
 Mammalian Cell Selection: Neomycin  
 Vector: pCMV6-Entry (PS100001)  
 E. coli Selection: Kanamycin (25 ug/mL)  
 ORF Nucleotide Sequence: >RC207877 ORF sequence  
 Red=Cloning site Blue=ORF Green=Tags(s)

TTTTGTAATACGACTCACTATAGGGCGGCCGGGAATTCGTCGACTGGATCCGGTACCGAGGAGATCTGCC  
 GCC**CGGATCGCC**

ATGAGGAGGCCGCGGGGGAACCCGGCCCCGGGCCCGAGACCGACTGAGGGAGCGACCTGCGCAGGGC  
 CCGGGGAGTCATGCTTCCATCTGATGGTCCCCTGGTGTGTGCCCTGGAACAGGAGCGAAGGCTCCGCT  
 CCCTCCGAAGCCACCTCCCCTTTCAGCCCTTCTCCGAGGTGGCAAGGGTTGGAAGTCTCTAAGC  
 TGCCCCGTTTTCTGCGGTATCCACGGCAGCATCTGATCAGCAGCCTGGCAGAGGCAAGGCCAGAGGAAC  
 TGA**CTCC**CCACGTGATGGTCTCTGGCCAGCACCTGGCCCGCACCGGTTGCGGGAGCCCCAGCTTCT  
 GGAAGCCATTGCCCACTTCTGGTGGTTCAGGAAACGCAACTCAGCAGCAAGGTGGTACAGAAGTTGGTC  
 CTGCCCTTTGGGCGACTGAACTACCTGCCCTGGAACAGCAGTTTATGCCCTGCCTTGAGAGGATCTGG  
 CTCGGGAAGCAGGGGTGGCACCCCTGGCTACAGTCAACATCTTGATGTCAGTGGCACCCCTCATGCT  
 GCCCTTCAGAGCCCTGCACTTTGTTTTTCCCCTGGCTTCATCAACTACATCAGTGGCACCCCTCATGCT  
 CTGATTGTGCGTCGCTACCTCTCCCTGCTGGACACGGCCGTGGAGCTGGAGCTCCAGGATACCGGGGTC  
 CCCGCTTCCCGAAGGCAGCAAGTGCCCATCTTCCCAGCCTCTCATCACCGACCGTCCCGCTGCAA  
 GTACAGTACAAGGACATAGTAGCTGAGGGTTGCGCCAGCTGCTGGGGGAGGAGAAATACCGCCAGGAC  
 CTGACTGTCCCTCAGGCTACTGCACAGACTTCTGCTGTGCGCCAGCAGCTCTGGTCTGTGCTTCCC  
 TGAGGACCCAGGACCCCTTCTGCCATACCCACCAAGGTCTGCCACAGGGCCAGGCTGCCTCTAGCGC  
 CACTACTCGAGACCTGCCAGAGGGTGGTCTGGTGTGCGGGAACGCTGGCATTCTGCCGGGACGGC  
 CGGGTGTGCTGGGCTCGAGGGCCCTGAGGGAGCGGCACCTAGGCCTGATGGGCTACCAGCTCTGCCGC  
 TACCCTTCGAGGAACTGGAGTCCAGAGAGGCCTGCCAGCTCAAGAGCTACCTGAGGCAGAAGCTCCA  
 GGCCCTGGGCTGCGCTGGGGCTGAAGGGGGC

**ACGGT**ACGCGGCCGCTCGAGCAGAACTCATCTCAGAAGAGGATCTGGCAGCAAATGATATCTGGATT  
 ACAAGGATGACGACGATAAGGTTAA



**Protein Sequence:** >RC207877 protein sequence  
Red=Cloning site Green=Tags(s)

MRRPRGEPGPRAPRPTEGATCAGPGESCFFSDGPLVCALEQERRLRPPKPPPLQPLLGGGLEAALS  
 CPRFLRYPRQHLISSLAEARPEELTPHVMVLLAQHLARHRLREPQLLEAIAHFLVVQETQLSSKVVQKLV  
 LPFGRLNYLPLEQQFMPCLERILAREAGVAPLATVNILMSLCQLRCLPFRALHFVFSFGF INYISGTPHA  
 LIVRRYLSLLDTAVELELPGYRGPRLPRRQQVPIFPQPLITDRARCKYSHKDIVAEGRLQLLGEEKYRQD  
 LTVPPGYCTDFLLCASSSGAVLPVRTQDPFLPYPPRSCPQQAASSATTRDPAQRVVLVLRERWHFCRDG  
 RVLLGSRALRERHLGLMGYQLLPLPFEELESQRGLPQLKSYLRQKLQALGLRWGPEGG

TRTRPLEQKLISEEDLAANDILDYKDDDDKV

**Chromatograms:** [https://cdn.origene.com/chromatograms/mk6338\\_f06.zip](https://cdn.origene.com/chromatograms/mk6338_f06.zip)

**Restriction Sites:** SgfI-MluI

**Cloning Scheme:**



\* The last codon before the Stop codon of the ORF

**ACCN:** NM\_033015

**ORF Size:** 1224 bp

**OTI Disclaimer:** The molecular sequence of this clone aligns with the gene accession number as a point of reference only. However, individual transcript sequences of the same gene can differ through naturally occurring variations (e.g. polymorphisms), each with its own valid existence. This clone is substantially in agreement with the reference, but a complete review of all prevailing variants is recommended prior to use. [More info](#)

**OTI Annotation:** This clone was engineered to express the complete ORF with an expression tag. Expression varies depending on the nature of the gene.

**Components:** The ORF clone is ion-exchange column purified and shipped in a 2D barcoded Matrix tube containing 10ug of transfection-ready, dried plasmid DNA (reconstitute with 100 ul of water).

**Reconstitution Method:**

1. Centrifuge at 5,000xg for 5min.
2. Carefully open the tube and add 100ul of sterile water to dissolve the DNA.
3. Close the tube and incubate for 10 minutes at room temperature.
4. Briefly vortex the tube and then do a quick spin (less than 5000xg) to concentrate the liquid at the bottom.
5. Store the suspended plasmid at -20°C. The DNA is stable for at least one year from date of shipping when stored at -20°C.

**RefSeq:** [NM\\_033015.3](#)

**RefSeq Size:** 1448 bp

**RefSeq ORF:** 1227 bp

**Locus ID:** 10922

**UniProt ID:** [Q14296](#)

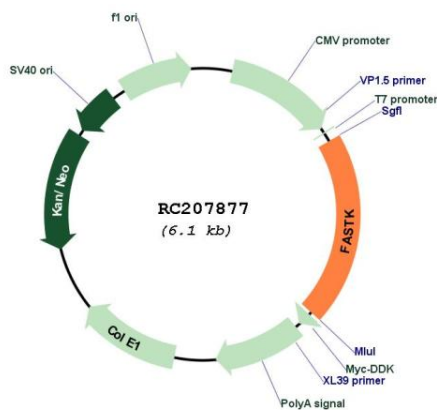
**Cytogenetics:** 7q36.1

**Protein Families:** Druggable Genome, Protein Kinase

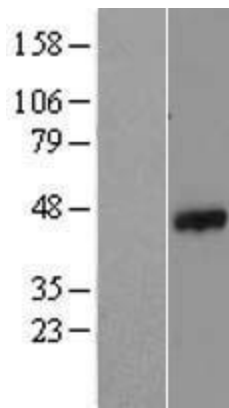
**MW:** 45.9 kDa

**Gene Summary:** The protein encoded by this gene is a member of the serine/threonine protein kinase family. This kinase was shown to be activated rapidly during Fas-mediated apoptosis in Jurkat cells. In response to Fas receptor ligation, it phosphorylates TIA1, an apoptosis-promoting nuclear RNA-binding protein. The encoded protein is a strong inducer of lymphocyte apoptosis. Two transcript variants encoding different isoforms have been found for this gene. Other variants exist, but their full-length natures have not yet been determined. [provided by RefSeq, Jul 2008]

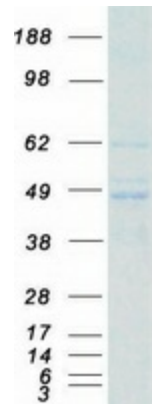
### Product images:



Circular map for RC207877



Western blot validation of overexpression lysate (Cat# [LY409778]) using anti-DDK antibody (Cat# [TA50011-100]). Left: Cell lysates from untransfected HEK293T cells; Right: Cell lysates from HEK293T cells transfected with RC207877 using transfection reagent MegaTran 2.0 (Cat# [TT210002]).



Coomassie blue staining of purified FASTK protein (Cat# [TP307877]). The protein was produced from HEK293T cells transfected with FASTK cDNA clone (Cat# RC207877) using MegaTran 2.0 (Cat# [TT210002]).