

Product datasheet for **RC207871**

WRCH1 (RHOU) (NM_021205) Human Tagged ORF Clone

Product data:

Product Type:	Expression Plasmids
Product Name:	WRCH1 (RHOU) (NM_021205) Human Tagged ORF Clone
Tag:	Myc-DDK
Symbol:	WRCH1
Synonyms:	ARHU; CDC42L1; G28K; hG28K; WRCH1
Mammalian Cell Selection:	Neomycin
Vector:	pCMV6-Entry (PS100001)
E. coli Selection:	Kanamycin (25 ug/mL)
ORF Nucleotide Sequence:	>RC207871 representing NM_021205 Red=Cloning site Blue=ORF Green=Tags(s)

TTTTGTAATACGACTCACTATAGGGCGGCCGGAATTCGTCGACTGGATCCGGTACCGAGGAGATCTGCC
GCC**CGGATCGCC**

ATGCCCCCGCAGCAGGGGACCCCGGTTCCCGACCGCTGCGAGGCGCCTCCGGTGCCGCCGCTCGGG
AGCGCGGTGGACGCGGGGACGCGGGCCTGGGGAGCCGGGGGCCGGGGCGTGCGGGGGTGCCGAGGG
GCGCGCGTCAAGTGCCTGCTGGTCGGCGACGGCGGGTGGCAAGACGAGCCTGGTGGTACACTACACC
ACCAACGGCTACCCACCGAGTACATCCCTACTGCCTTCGACAATTCTCCGCGGTGGTGTCTGTGGATG
GGCGGCCCGTGAGACTCCAACCTGTGACTGCGGACAGGATGAATTTGACAAGCTGAGGCCTCTCTG
CTACACCAACACAGACATCTTCTGCTCTGCTTCAAGTGTGAGCCCTCATCCTCCAGAACGTCAGT
GAGAAATGGGTGCCGGAGATTGCATGCCACTGTCCAAAGCCCCATCATCCTAGTTGGAACGCAGTCGG
ATCTCAGAGAAGATGTCAAAGTCTCATTGAGTTGGACAAATGCAAAGAAAAGCCAGTGCCTGAAGAGGC
GGCTAAGCTGTGCGCCGAGGAAATCAAAGCCGCTCCTACATCGAGTGTTCAGCCTTGACTCAAAAAAAC
CTCAAAGAGGTCTTTGATGCAGCCATCGTCGTTGCATTCAATACTCGGACACTCAGCAACAGCCAAAGA
AGTCTAAAAGCAGGACTCCAGATAAAATGAAAAACCTCTCAAGTCTGGTGAAGAAGTACTGCTGTT
CGTA

ACGCGTACGCGGCCGCTCGAGCAGAAACTCATCTCAGAAGAGGATCTGGCAGCAAATGATATCCTGGATT
ACAAGGATGACGACGATAAGGTTTAA



[View online »](#)

Protein Sequence: >RC207871 representing NM_021205
Red=Cloning site Green=Tags(s)

MPPQQGDPAPFDRCEAPPVPPRRERGGRRGPGEPGGRGRAGGAEGRGVKCVLVGDGAVGKTSLVVSYT
 TNGYPTEYIPTAFDNFSAVVSVDRPVRLLQLCDTAGQDEFDKLRPLCYTNTDIFLLCFVSVSPSSFQNVS
 EKWVPEIRCHCPKAPIILVGTQSDLREDVKVLIELDKCKEKPVPPEAAKLCAEEIKAASYIECSALTQKN
 LKEVFDAAIVAGIQYSDTQQQPKKSKSRTPDKMKNLSKSWWKYCCFV

TRTRPLEQKLISEEDLAANDILDYKDDDDKV

Chromatograms: https://cdn.origene.com/chromatograms/mg4618_b09.zip

Restriction Sites: SgfI-MluI

Cloning Scheme:



ACCN: NM_021205

ORF Size: 774 bp

OTI Disclaimer: The molecular sequence of this clone aligns with the gene accession number as a point of reference only. However, individual transcript sequences of the same gene can differ through naturally occurring variations (e.g. polymorphisms), each with its own valid existence. This clone is substantially in agreement with the reference, but a complete review of all prevailing variants is recommended prior to use. [More info](#)

OTI Annotation: This clone was engineered to express the complete ORF with an expression tag. Expression varies depending on the nature of the gene.

Components: The ORF clone is ion-exchange column purified and shipped in a 2D barcoded Matrix tube containing 10ug of transfection-ready, dried plasmid DNA (reconstitute with 100 ul of water).

Reconstitution Method:

1. Centrifuge at 5,000xg for 5min.
2. Carefully open the tube and add 100ul of sterile water to dissolve the DNA.
3. Close the tube and incubate for 10 minutes at room temperature.
4. Briefly vortex the tube and then do a quick spin (less than 5000xg) to concentrate the liquid at the bottom.
5. Store the suspended plasmid at -20°C. The DNA is stable for at least one year from date of shipping when stored at -20°C.

RefSeq: [NM_021205.6](#)

RefSeq Size: 4369 bp

RefSeq ORF: 777 bp

Locus ID: 58480

UniProt ID: [Q7L0Q8](#)

Cytogenetics: 1q42.13

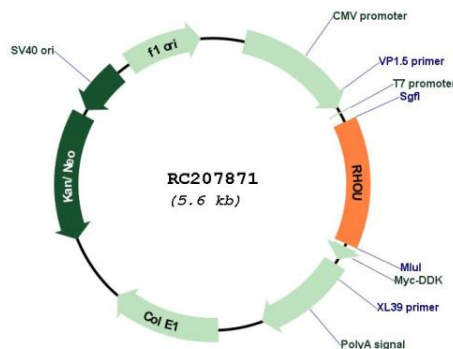
Domains: ras, RAN, RAS, RHO, RAB

Protein Families: Druggable Genome

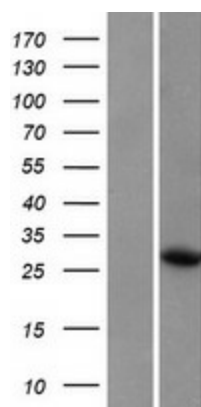
MW: 28 kDa

Gene Summary: This gene encodes a member of the Rho family of GTPases. This protein can activate PAK1 and JNK1, and can induce filopodium formation and stress fiber dissolution. It may also mediate the effects of WNT1 signaling in the regulation of cell morphology, cytoskeletal organization, and cell proliferation. A non-coding transcript variant of this gene results from naturally occurring read-through transcription between this locus and the neighboring DUSP5P (dual specificity phosphatase 5 pseudogene) locus.[provided by RefSeq, Mar 2011]

Product images:



Circular map for RC207871



Western blot validation of overexpression lysate (Cat# [LY412011]) using anti-DDK antibody (Cat# [TA50011-100]). Left: Cell lysates from untransfected HEK293T cells; Right: Cell lysates from HEK293T cells transfected with RC207871 using transfection reagent MegaTran 2.0 (Cat# [TT210002]).