

Product datasheet for RC207865

LIX1L (NM_153713) Human Tagged ORF Clone

Product data:

Product Type:	Expression Plasmids
Product Name:	LIX1L (NM_153713) Human Tagged ORF Clone
Tag:	Myc-DDK
Symbol:	LIX1L
Mammalian Cell Selection:	Neomycin
Vector:	pCMV6-Entry (PS100001)
E. coli Selection:	Kanamycin (25 ug/mL)
ORF Nucleotide Sequence:	>RC207865 representing NM_153713 Red=Cloning site Blue=ORF Green=Tags(s)

TTTTGTAATACGACTCACTATAGGGCGGCCGGAATTCGTCGACTGGATCCGGTACCGAGGAGATCTGCC
GCC**CGATCGCC**

ATGGAGACTATGCGAGCGCAGCGGCTGCAGCCTGGTGTGGGCACCAGCGGGAGGGGCACTCTCCGAGCGC
TGCGGCCCGGAGTGACTGGGGCCGCGGCTGCCACCGCCACACCCCTGCGGGCCCCCGCCTGCCCGCC
GCCTCCCGCACCGCCCGCCGCGCTGCTCCTGTCTGGGGCCCCAGGACTACCCCTGCCCGGGCGCC
GCCGGCAGCCCGCAGTGCTGCGAGAGGCCGTGGAGGCCGTGGTGGAGAGCTTCGCAAGCACACGCAGG
GCTATGGCCGAGTGAATGTGGTGGAGGCACTTCAGGAATTCGGCAGATGAAGCAGTCCCGTGGTGCTGA
CTTAAAGAATGGGGCTCTAGTGGTTTATGAGATGGTTCCTCCAACAGCCCTCCTTATGTCTGCTATGTC
ACCCTGCCTGGGGGAAGCTGCTTTGGGAGTTTCCAGTTTTGCCCCACAAAAGCTGAGGCCCGGAGGAGTG
CTGCAAAGATTGCGCTAATGAATTCTGTGTTAATGAACATCCTTCCCGAAGAATCACTGATGAGTTCAT
CGAGAAGAGTGTCTCTGAGGCCCTGGCATCTTTAATGGCAACAGGGAGGAAGCTGACAACCCAAATACA
GGGATTGGTGCCTTCCGATTCATGCTGGAATCCAACAAGGGCAAATCAATGTTGGAGTTCAGGAGCTAA
TGACAGTTTTTCAACTGCTACACTGGAATGGCAGCCTTAAGGCCATGAGGGAACGACAATGCTCTCGGCA
GGAGGTGTTGGCTCATTATTCGACCCGGGCCCTGGATGATGATATTCGCCACCAATGCCCTGGACTGG
GTGAGCCGGGAGCAGAGTGTGCCGGGGCACTGTCTAGAGAGCTGCCTCTACTGAGCGGGAGCTGGATG
AAGCCCGACTGGCAGGCAAGGAGCTGCGCTTCCACAAGGAGAAGAAAGATATTCTTGTGCTGGCTGCTGG
GCAGTTGGCAATATGCATTCTTCCAATGCTC

ACGCGTACGCGGCCGCTCGAGCAGAACTCATCTCAGAAGAGGATCTGGCAGCAAATGATATCCTGGATT
ACAAGGATGACGACGATAAGGTTTAA



[View online »](#)

Protein Sequence: >RC207865 representing NM_153713
Red=Cloning site Green=Tags(s)

METMRAQRLQPGVGTSGRGTLRALRPGVTGAAAATATPPAGPPPAPPPAPPPPLLLSGAPGLPLPPGA
 AGSPAVLREAVEAVVRSFAKHTQGYGRVNVVEALQEFWQMKQSRGADLKNALVYEMVPSNSPPYVCYV
 TLPGGSCFSGSFQFCPTKAEARRSAAKIALMNSVFNEHPSRRITDEFIEKSVSEALASFNGNREEADNPNT
 GIGAFRFMLESNKGKSMLEFQELMTVFQLLHWNGSLKAMRERQCSRQEVLAHYSHRALDDD~~IRHQMALDW~~
 VSREQSVPGALSRELA~~STERELDEARLAGKELRFHKEK~~DILVLAAGQLGNMHSSNC

TRTRPLEQKLISEEDLAANDILDYKDDDDKV

Chromatograms: https://cdn.origene.com/chromatograms/ja1737_b04.zip

Restriction Sites: Sgfl-MluI

Cloning Scheme:

Cloning sites used for ORF Shuttling:



* The last codon before the Stop codon of the ORF

ACCN: NM_153713

ORF Size: 1011 bp

OTI Disclaimer: The molecular sequence of this clone aligns with the gene accession number as a point of reference only. However, individual transcript sequences of the same gene can differ through naturally occurring variations (e.g. polymorphisms), each with its own valid existence. This clone is substantially in agreement with the reference, but a complete review of all prevailing variants is recommended prior to use. [More info](#)

OTI Annotation: This clone was engineered to express the complete ORF with an expression tag. Expression varies depending on the nature of the gene.

Components: The ORF clone is ion-exchange column purified and shipped in a 2D barcoded Matrix tube containing 10ug of transfection-ready, dried plasmid DNA (reconstitute with 100 ul of water).

Reconstitution Method:

1. Centrifuge at 5,000xg for 5min.
2. Carefully open the tube and add 100ul of sterile water to dissolve the DNA.
3. Close the tube and incubate for 10 minutes at room temperature.
4. Briefly vortex the tube and then do a quick spin (less than 5000xg) to concentrate the liquid at the bottom.
5. Store the suspended plasmid at -20°C. The DNA is stable for at least one year from date of shipping when stored at -20°C.

RefSeq: [NM_153713.1](#), [NP_714924.1](#)

RefSeq Size: 1467 bp

RefSeq ORF: 1014 bp

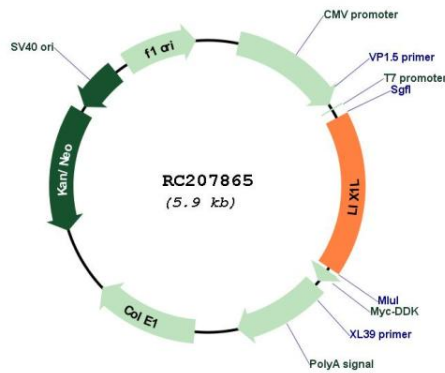
Locus ID: 128077

UniProt ID: [Q8IVB5](#)

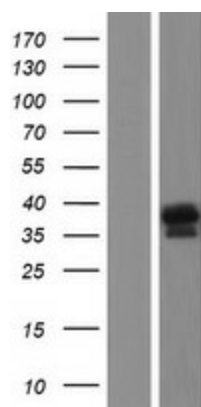
Cytogenetics: 1q21.1

MW: 36.4 kDa

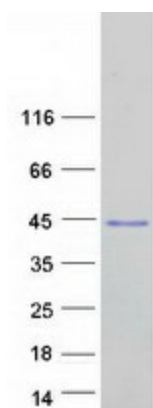
Product images:



Circular map for RC207865



Western blot validation of overexpression lysate (Cat# [LY406934]) using anti-DDK antibody (Cat# [TA50011-100]). Left: Cell lysates from untransfected HEK293T cells; Right: Cell lysates from HEK293T cells transfected with RC207865 using transfection reagent MegaTran 2.0 (Cat# [TT210002]).



Coomassie blue staining of purified LIX1L protein (Cat# [TP307865]). The protein was produced from HEK293T cells transfected with LIX1L cDNA clone (Cat# RC207865) using MegaTran 2.0 (Cat# [TT210002]).