

## Product datasheet for **RC207862**

### **CYYR1 (NM\_052954) Human Tagged ORF Clone**

#### Product data:

**Product Type:** Expression Plasmids  
**Product Name:** CYYR1 (NM\_052954) Human Tagged ORF Clone  
**Tag:** Myc-DDK  
**Symbol:** CYYR1  
**Synonyms:** C21orf95  
**Mammalian Cell Selection:** Neomycin  
**Vector:** pCMV6-Entry (PS100001)  
**E. coli Selection:** Kanamycin (25 ug/mL)  
**ORF Nucleotide Sequence:** >RC207862 ORF sequence  
**Red=Cloning site Blue=ORF Green=Tags(s)**

TTTTGTAATACGACTCACTATAGGGCGGCCGGAATTCGTCGACTGGATCCGGTACCGAGGAGATCTGCC  
GCC**CGGATCGCC**

ATGGACGCTCCGAGGCTACCCGTGCGTCCAGGGTCTTGCTTCCGAAGTTGGTCTGCTCTTTGTCTACG  
CAGATGATTGCCTTGCTCAGTGTGGCAAAGATTGCAAATCTTACTGCTGTGATGGAACACGCCCTACTG  
TTGCTCCTACTACGCTTATTTGGGAATCCTCTCGGGCACTGCAATTGCGGGCATTGTTTTGGAATA  
GTATTTATCATGGGGTATTGCTGGGATTGCCATATGCATCTGCATGTGCATGAAGAACCACAGGGCGA  
CCCGCTGGGCATCCTCAGGACGACTCACATCAACACCGTCTCCTCCTATCCTGGACCACCACCTACGG  
TCACGACCACGAGATGGAATACTGTGCAGACTTGCTCCTCCATACTCCCCACCCACAGGGTCCAGCA  
CAGCGTCTCCACCCCTCTTATCCTGAAACGCAAGGAAA

**ACGCGT**ACGCGGCCGCTCGAGCAGAACTCATCTCAGAAGAGGATCTGGCAGCAAATGATATCCTGGATT  
ACAAGGATGACGACGATAAGGTTTAA

**Protein Sequence:** >RC207862 protein sequence  
**Red=Cloning site Green=Tags(s)**

MDAPRLPVRPGVLLPKLVLLFVYADDCLAQCGKDCKSYCCDGTTPYCCSYAYIGNILSGTAIAGIVFGI  
VFIMGVIAGIAICMCMKNHRATRVGILRTHINTVSSYPGPPPYGHDHEMEYCADLPPPYSPTPQGPA  
QRSPPPPYPGNARK

**TRTRPLEQKLI**SEEDLAANDILDYKDDDDKV

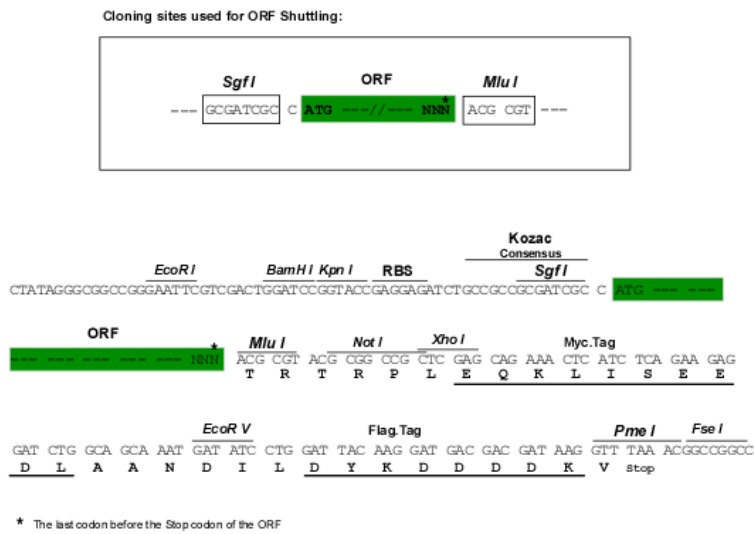
**Chromatograms:** [https://cdn.origene.com/chromatograms/mk6021\\_g10.zip](https://cdn.origene.com/chromatograms/mk6021_g10.zip)



[View online »](#)

Restriction Sites: SgfI-MluI

Cloning Scheme:



ACCN: NM\_052954

ORF Size: 462 bp

OTI Disclaimer: The molecular sequence of this clone aligns with the gene accession number as a point of reference only. However, individual transcript sequences of the same gene can differ through naturally occurring variations (e.g. polymorphisms), each with its own valid existence. This clone is substantially in agreement with the reference, but a complete review of all prevailing variants is recommended prior to use. [More info](#)

OTI Annotation: This clone was engineered to express the complete ORF with an expression tag. Expression varies depending on the nature of the gene.

Components: The ORF clone is ion-exchange column purified and shipped in a 2D barcoded Matrix tube containing 10ug of transfection-ready, dried plasmid DNA (reconstitute with 100 ul of water).

Reconstitution Method:

1. Centrifuge at 5,000xg for 5min.
2. Carefully open the tube and add 100ul of sterile water to dissolve the DNA.
3. Close the tube and incubate for 10 minutes at room temperature.
4. Briefly vortex the tube and then do a quick spin (less than 5000xg) to concentrate the liquid at the bottom.
5. Store the suspended plasmid at -20°C. The DNA is stable for at least one year from date of shipping when stored at -20°C.

RefSeq: [NM\\_052954.5](#)

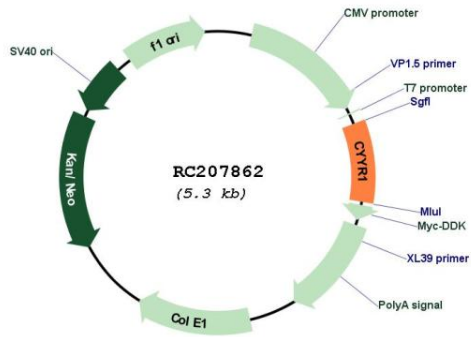
RefSeq Size: 3094 bp

RefSeq ORF: 465 bp

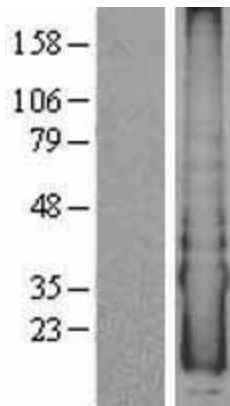
Locus ID: 116159

UniProt ID: [Q96J86](#)  
 Cytogenetics: 21q21.3  
 Protein Families: Transmembrane  
 MW: 16.6 kDa

**Product images:**



Circular map for RC207862



Western blot validation of overexpression lysate (Cat# [LY403280]) using anti-DDK antibody (Cat# [TA50011-100]). Left: Cell lysates from untransfected HEK293T cells; Right: Cell lysates from HEK293T cells transfected with RC207862 using transfection reagent MegaTran 2.0 (Cat# [TT210002]).