

Product datasheet for **RC207855**

ZCCHC7 (NM_032226) Human Tagged ORF Clone

Product data:

Product Type:	Expression Plasmids
Product Name:	ZCCHC7 (NM_032226) Human Tagged ORF Clone
Tag:	Myc-DDK
Symbol:	ZCCHC7
Synonyms:	AIR1; HSPC086
Mammalian Cell Selection:	Neomycin
Vector:	pCMV6-Entry (PS100001)
E. coli Selection:	Kanamycin (25 ug/mL)



[View online »](#)

ORF Nucleotide Sequence:

>RC207855 ORF sequence
 Red=Cloning site Blue=ORF Green=Tags(s)

TTTTGTAATACGACTCACTATAGGGCGGCCGGAATTCGTCGACTGGATCCGGTACCGAGGAGATCTGCC
 GCC**CGCATCGCC**

ATGTTTGGTGGCTATGAGACTATAGAAGCATACGAAGATGATCTTTATCGAGATGAGTCATCTAGTGAAC
 TGAGTGTGATAGTGAGGTGGAATTTCAACTCTATAGCCAAATCATTATGCCAAAGATCTTGATGATGT
 CATCAGGGAGGAAGAGCATGAAGAAAAGAACTCTGGGAATTCGGAATCTTCGAGTAGTAAACCAATCAG
 AAGAAGCTAATCGTCCTTTAGATAGTGAGGTCATCCAGCTGTCAGATGGGTGAGAGGTCATCACTTTGT
 CTGATGAAGACAGTATTTATAGATGTAAGGAAAGAATGTTAGAGTTCAAGCACAAAGAAAATGCCCATGG
 TCTTTCTTCTCTTCAATCTAATGAGCTGGTTGATAAGAAATGCAAGAGTGATATTGAGAAGCCTAAA
 TCTGAAGAGAGATCAGGTGTAATCCGAGAGGTCATGATTATAGAGGTGAGTTCAAGTGAAGGGAAGAGA
 GCACCATTTCAGAAGGTGATAATGTGAAAGCTGGATGCTACTGGGATGTGAAGTAGATGATAAAGATGA
 TGATATCCTTCTCAACCTTGTGGGATGTGAAAACCTCTGTTACTGAAGGAGAAGATGGTATAAACTGGTCC
 ATCAGTGACAAAGACATTGAGGCCAGATAGCTAATAACCGAACACCTGGAAGATGGACCCAGCGGTA
 ATTCAGCCAACAAAAACATTATCTGTAGAAATGTGACAAACGTGGTCATTTATCAAAAACTGCCCTT
 ACCACGAAAAGTTGTCGCTGCTTCTGTGCTCCAGGAGAGGACATCTCCTGTATTCTGTCCAGCCCC
 CTTTGGCAATACTGTCCTGTGCCAAGATGTTGGACCACTCATGTCTTTTCAGACATTCCTGGGATAAAC
 AGTGTGACCGATGTCATATGCTAGGCCACTATACAGATGCTTGCACAGAAATCTGGAGGCAGTATCACCT
 AACGACCAACCTGGACCACCAAAAAGCCGAAGACCCCTTCAAGACCATCAGCCTTAGCATATTGCTAT
 CACTGCGCGCAAAAAGGCCATTATGGACACGAATGTCCAGAAAGAGAAGTGTATGACCCGTCTCCAGTAT
 CTCCATTCATCTGCTACTATGATGACAAATATGAAATTCAGGAGAGAGAAAAGAGACTAAAACAAAAAT
 AAAAGTACTCAAGAAAAATGGGGTTATCCAGAGCCATCCAAGTACCTTATATAAAGCAGCAAAATGAG
 AACCCCAACCATGATATAAGGAAGGGCCGTGCCTCATGAAAAGCAACAGGTGGCCTCAAGAAAAATAAG
 AAACACAAAAAGAAATGAAGAACAAGAATAGAAACTGGGAGAAGCACAGGAAGGCTGACAGACATCGTGA
 AGTGGATGAGGATTTTCCAGGGGCCCAAAACCTACTCTTCTGCGCAGTTTTAAACCCAGAAGCCT
 TCTAAGCCCTTTCACCGTTCATCACATTACCACACGTCAAGAGAAGACAAGTCTCCAAGGAAGGCAAGA
 GGGCAAGCAGAAGAAAAAGGAGAGGTGCTGGGAAGATGATGACAATGATAACTATTTCTTATTAAGCA
 GAGAAAAAAAAGTCT

ACGCGTACGCGGCCGCTCGAGCAGAAACTCATCTCAGAAGAGGATCTGGCAGCAAATGATATCCTGGATT
 ACAAGGATGACGACGATAAGGTTTAA

Protein Sequence:

>RC207855 protein sequence
 Red=Cloning site Green=Tags(s)

MFGGYETIEAYEDDLYRDESSSELVSDSEVEFQLYSQIHYAQDLDDVIREEEHEEKNSGNSSESSSKPNQ
 KKLIVLSDSEVIQLSDGSEVITLSDSDSIYRCKGNVRVQAQENAHGLSSSLQSNELVDKCKSDIEKPK
 SEERSGVIREVMIIEVSSSEEEESTISEGDNVESWMLLGCEVDDKDDILLNLVGCENSVEGEDGINWS
 ISDKDIEAQIANNRTPGRWTQRYYSANKNIIICRNCDKRGHL SKNCPLPRKVRRFCFSRRGHLLYSCAP
 LCEYCPVKMLDHSCLFRHSWDKQCDRCHMLGHYTDACTEIWRQYHL TTKPGPPKPKTPSRPSALAYCY
 HCAQKGHYGHECPEREVYDPSVSPFICYDDKYEIQEREKRLKQKIKVLKKNVVIPEPSKLPYIKAANE
 NPHHDIRKGRASWKSNRWPQENKETQKEMKNKRNWEKHRKADRHREVEDDFPRGPPTYSSPGSFKTQKP
 SKPFHRSSHYHTSREDKSPKEGKRGKQKKKERCWEDDDNDNLFLIKQRKKKS

TRTRPLEQKLI SEEDLAANDILDYKDDDDKV

Chromatograms:

https://cdn.origene.com/chromatograms/mk6510_b12.zip

Restriction Sites:

Sgfl-Mlul

Cloning Scheme:

ACCN: NM_032226

ORF Size: 1626 bp

OTI Disclaimer: The molecular sequence of this clone aligns with the gene accession number as a point of reference only. However, individual transcript sequences of the same gene can differ through naturally occurring variations (e.g. polymorphisms), each with its own valid existence. This clone is substantially in agreement with the reference, but a complete review of all prevailing variants is recommended prior to use. [More info](#)

OTI Annotation: This clone was engineered to express the complete ORF with an expression tag. Expression varies depending on the nature of the gene.

Components: The ORF clone is ion-exchange column purified and shipped in a 2D barcoded Matrix tube containing 10ug of transfection-ready, dried plasmid DNA (reconstitute with 100 ul of water).

- Reconstitution Method:**
1. Centrifuge at 5,000xg for 5min.
 2. Carefully open the tube and add 100ul of sterile water to dissolve the DNA.
 3. Close the tube and incubate for 10 minutes at room temperature.
 4. Briefly vortex the tube and then do a quick spin (less than 5000xg) to concentrate the liquid at the bottom.
 5. Store the suspended plasmid at -20°C. The DNA is stable for at least one year from date of shipping when stored at -20°C.

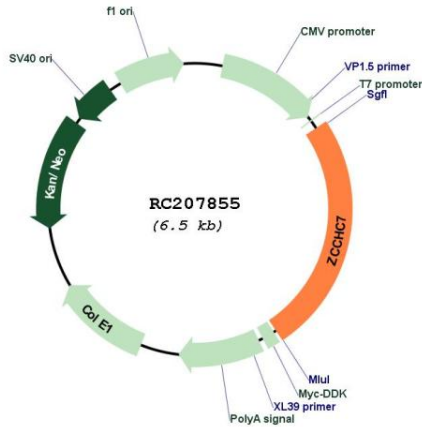
RefSeq: [NM_032226.1](#), [NP_115602.1](#)
RefSeq Size: 2701 bp

RefSeq ORF: 1632 bp

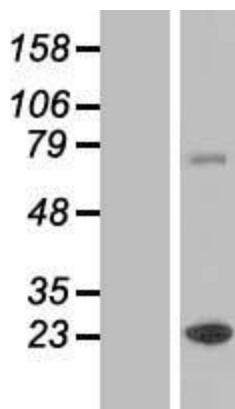
Locus ID: 84186

UniProt ID: [Q8N3Z6](#)

Cytogenetics: 9p13.2
Domains: zf-CCHC
Protein Pathways: RNA degradation
MW: 62.9 kDa

Product images:


Circular map for RC207855



Western blot validation of overexpression lysate (Cat# [LY410282]) using anti-DDK antibody (Cat# [TA50011-100]). Left: Cell lysates from untransfected HEK293T cells; Right: Cell lysates from HEK293T cells transfected with RC207855 using transfection reagent MegaTran 2.0 (Cat# [TT210002]).