

Product datasheet for **RC207854**

ATXN7L2 (NM_153340) Human Tagged ORF Clone

Product data:

Product Type:	Expression Plasmids
Product Name:	ATXN7L2 (NM_153340) Human Tagged ORF Clone
Tag:	Myc-DDK
Symbol:	ATXN7L2
Mammalian Cell Selection:	Neomycin
Vector:	pCMV6-Entry (PS100001)
E. coli Selection:	Kanamycin (25 ug/mL)



[View online »](#)

ORF Nucleotide Sequence:

>RC207854 representing NM_153340
 Red=Cloning site Blue=ORF Green=Tags(s)

TTTTGTAATACGACTCACTATAGGGCGGCCGGGAATTCGTCGACTGGATCCGGTACCGAGGAGATCTGCC
 GCC**CGGATCGCC**

ATGGCGGTGCGTGAACGCGCGGCCGAGCAATGGCCGCTCTGGAGCGCGGGTCCGAGTCTCGATGACT
 TCGCGGGACAGAGCTGGAGCTCGTGGGTGGAGCGGGCCGACCTGCCCGCGCTGACGGGGCTGAGCTGGA
 GGAGAGTAGCAAAAAACGAAGAAGTTGGATGCCATGACCCTCATTAAAGAAGACATGTCCATCTTCGGG
 CACTGCCCTGCCATGATGACTTCTACTTGGTTGTGTGAACCACTGCAGCCAAGTGGTGAAGCCTCAAG
 CTTTCCAGAAGCACTGCGAAAGAAGACATGGGCCCTCAGCAAGCTTTATGGCCGGGCCACCCACC
 TCCAGCCCTGCCAGCTCTCAGAAATGCCATGTAGTGAATGGCAGGGCCAGCTTGTAGGGCCCAAGT
 TCCACGAAACCTCCTCCAGGGAGAAGGGCCAGGGGTCCCGGAGCCGTGGCCACCAGCCTCTGAGAAGA
 CCCAGAAGGACAACCTCTGCCAGCCAGGGGCCCTCACCAAGACTCCCTGGAAAACCTCCCATGGCTCC
 CCCTTCTAAAGAACCTCCTGGCAGAGAGAACATCGAGATCATCCCAGTGAGGGTCCAGTCACTGGCT
 GAAGGCAGCCCTCCTGAAAAGGAGCCAGTGGGACCAGGCTGCCCTAAAACCCACCGGAAGATGGCTC
 GGAAGGAGTGCACCTAACAGGCACTGTGGGTAAATAATCCAGAGACAAAAAGATCTGTACCCGCT
 GTTGACCTGCAAGATCCACTCAGTACACCAGCGCCGGGAAGTCCAGGGCCGGCCAAAGACTTTGACGTG
 CTGGTGGCAGAGCTGAAGGCCAACTCCCGCAAAGGGGAGTCTCCAAGGAGAAGAGCCAGGGCGCAAGG
 AGCAAGTTCTCGAGCGCCCTCCAGGAGCTCCCTCCTCAGTCCAGGTTGTAGCAGCGGTGGCTGCTCC
 CAGCAGCACCTTCTGTTCGTGCCAAGCAGACCTACCCATACTGTGCACTGCCAGGTCGGGGCTCC
 TCCGAGAGTGAATTGGATGATGAAGGCCCTGTGGTGGTATGGGAGCCAGGCTGTTCCCTTCCCA
 TGCCCGGGGTGGGACCCAGGCTCCAGCGAAGAGAGTGAAGGAGGAGGGACATCTGACGACCTCCACCC
 ACCCCCTGACTGCCATTATGCAACCCGGCCCCACGGCCACAGGCGTTCTGCACCTTTGGGAGCCGGCTG
 GTGAGCCAGGATGCTATGTGTTTAGCCCGCGCTGGACCGTTCTGCTCAGCACTCAGTCCATGCTGG
 AACGGCACCTCAGCACACACATGTGGAAGAAGATCCCACCGCAGCTGAACCTCCAGTTCACCTGTCAA
 CTCCCCGTATCTGCTCCCTGAGCCATCCTCTACAGGCACCTGCCCCGCCTTCCAGTCCAACCCTG
 AGACCTGCCTGCCAGCCTCCATGCCCCCACCAAGGACAACCTGTCCCAGCTACCCTGCAGGCTCCC
 CCAGCGTGGCGGCTGCCTGTAGCCAGGCAGAGTGCATGGGGAGCCAGGCTATCACCTCACCCTGCCTG
 CCAACACGCCATCCCGTCTTCCAGCAAGCTGCCGCTTCCAAGGCCAGCAAGTCATCAAAGGCAAGGA
 CGGGGTGGAGGTGGAGGCCCTTCTCGAAAGCGGAAGTTATCCCTGGCCCTACCACTCT

ACGCGTACGCGGCCGCTCGAGCAGAAACTCATCTCAGAAGAGGATCTGGCAGCAAATGATATCCTGGATT
 ACAAGGATGACGACGATAAGGTTTAA

Protein Sequence:

>RC207854 representing NM_153340
 Red=Cloning site Green=Tags(s)

MAVRERAAAAMAALERRVPSLDDFAGQSWSSWVERADLPAADGAELEESSKNTKKLDAMTLIKEDMSIFG
 HCPAHDDFYLVVNCNHCNQVVKPQAFQKHCERRHGPLSKLYGRAPPPPPAPASSQKCHVVNGQGPACRAPH
 STKTSSREKQGQSRSRGHQPPEKTQKDNLCQPGGLTKDSPGKPPMAPPSPKEPPGRENIEIIPSESSHWA
 EGSPPEKEPSGTRLPKTHRKMARKECDLNRQCGVINPETKKICTRLLTCKIHSVHQRREVVQGRAKDFDV
 LVAELKANSRKGESPEKSPGRKEQVLERPSQELPSSVQVVAAVAAPSSTFSVRAKQTYPCALPRSRAS
 SESELDDEGPCGGDGPGLFPFMPRGGTQASSEEESEEGTSDDLHPPPDCHYATRPPRPQAFCTFGSRL
 VSPGCYVFSRRLDRFCALSMLERHLSTHMWKKIPPAEPPVHLVNSPLSAPLSPSSTGTCPRLPGPTL
 RPACPASMPPTKDNLVPSYPAGSPSVAACCSQAECMGEPGYHLTTACQHAIPVLQQAAAFQGGQVIQRQG
 RGGGGGPFKAIEVWPYHS

TRTRPLEQKLISEEDLAANDILDYKDDDDKV

Chromatograms:

https://cdn.origene.com/chromatograms/mg3356_d07.zip

Restriction Sites:

SgfI-MluI

Cloning Scheme:


ACCN: NM_153340

ORF Size: 1740 bp

OTI Disclaimer: The molecular sequence of this clone aligns with the gene accession number as a point of reference only. However, individual transcript sequences of the same gene can differ through naturally occurring variations (e.g. polymorphisms), each with its own valid existence. This clone is substantially in agreement with the reference, but a complete review of all prevailing variants is recommended prior to use. [More info](#)

OTI Annotation: This clone was engineered to express the complete ORF with an expression tag. Expression varies depending on the nature of the gene.

Components: The ORF clone is ion-exchange column purified and shipped in a 2D barcoded Matrix tube containing 10ug of transfection-ready, dried plasmid DNA (reconstitute with 100 ul of water).

- Reconstitution Method:**
1. Centrifuge at 5,000xg for 5min.
 2. Carefully open the tube and add 100ul of sterile water to dissolve the DNA.
 3. Close the tube and incubate for 10 minutes at room temperature.
 4. Briefly vortex the tube and then do a quick spin (less than 5000xg) to concentrate the liquid at the bottom.
 5. Store the suspended plasmid at -20°C. The DNA is stable for at least one year from date of shipping when stored at -20°C.

RefSeq: [NM_153340.2](#), [NP_699171.2](#)

RefSeq Size: 2318 bp

RefSeq ORF: 2169 bp

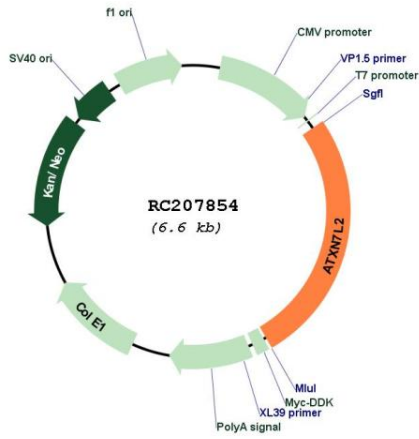
Locus ID: 127002

UniProt ID: [Q5T6C5](#)

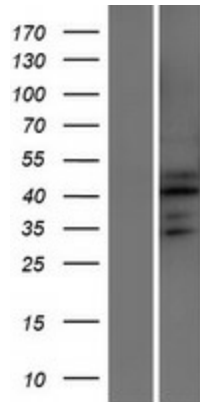
Cytogenetics: 1p13.3

MW: 77 kDa

Product images:



Circular map for RC207854



Western blot validation of overexpression lysate (Cat# [LY407058]) using anti-DDK antibody (Cat# [TA50011-100]). Left: Cell lysates from untransfected HEK293T cells; Right: Cell lysates from HEK293T cells transfected with RC207854 using transfection reagent MegaTran 2.0 (Cat# [TT210002]).