

## Product datasheet for **RC207852**

### CCNJL (NM\_024565) Human Tagged ORF Clone

#### Product data:

Product Type:	Expression Plasmids
Product Name:	CCNJL (NM_024565) Human Tagged ORF Clone
Tag:	Myc-DDK
Symbol:	CCNJL
Mammalian Cell Selection:	Neomycin
Vector:	pCMV6-Entry (PS100001)
E. coli Selection:	Kanamycin (25 ug/mL)
ORF Nucleotide Sequence:	>RC207852 ORF sequence Red=Cloning site Blue=ORF Green=Tags(s)

TTTTGTAATACGACTCACTATAGGGCGGCCGGAATTCGTCGACTGGATCCGGTACCGAGGAGATCTGCC  
GCC**CGATCGCC**

ATGATGGATGAGCCGTGGTGGGAAGGGCGCGTCGCTCGGACGTCCACTGCACCCTGCGCGAGAAGGAAC  
TGAAGCTGCCACCTCCGAGCCCACTCCCCACTCCTGAAGAGCCGCGGTTCTTCGTGGACATCCTGAC  
CCTGCTGAGCAGCCACTGCCAGCTCTGCCCTGCAGCCCGGACCTGGCCGTCTACCTGCTGGACCACTTC  
ATGGATCGCTACAACGTACCACCTCCAAGCAGCTCTACACCGTGGCCGTCTCCTGCCTCCTGCTTGCAA  
ACGGAGTTTCGCTTTATCGCCAGGCTGAAGTGCAGTGGCATGATCTCAGCTCATTGCAACCTCCACCT  
CCAGGTTCAAGCAATTCCTGCTTCAGCGCCCAACCCCAACCCACACCGCCCAAGTAGCTGAGACT  
ACAGGTAAGTTCGAGGATCGGGAAGACCAGTCCCAAGTTGGAGCAAATAAACAGCACGAGGATCCTGA  
GCAGCCAGAACTTACCCTCACCAGAAGGAGCTGCTGAGCACAGAGCTGCTGCTCCTGGAGGCCTTCAG  
CTGGAACCTCTGCCTGCCACGCCTGCCCACTTCTGACTACTACCTCTTGGCCTCCGTCAGCCAGAAG  
GACCACCACTGCCACACCTGGCCACCACCTGCCCCGCAAGACCAAGAGTGCCCAAGGAGTATGCC  
ATTACTTCTAGAGGTCACCCTGCAAGATCACATATTCTACAAATCCAGCCTTCTGTGGTCTGCTGCGG  
CTGTGTTGGGGCCTCCAGGATTTGCCTGCAGCTTCTCCCTACTGGACCAGAGACCTGCAGAGGATCTCA  
AGCTATTCCTGGAGCACCTCAGCACGTGATTGAAATCCTGCTGGTAGTGTATGACAACGTCCTCAAGG  
ATGCCGTAGCCGTCAGAGCCAGGCTTGGCAATGGTGCCTGGCACACCCCAACCCCACTCAAGTGCT  
GTTCCAGCCACCAGCCTACCCGGCCCTCGGCCAGCCAGCACCCTGGCACAGTTCAGACCCCGTG  
CAGGACCTATGCTTGGCCTATCGGGACTCCTTGCAGGCCACCGTTCAGGGAGCCTGCTCTCGGGGAGTA  
CAGGCTCATCCCTCCACACCCCGTACCAACCGCTGCAGCCCTGGATATGTGTCCCGTGCCCGTCCCTGC  
ATCCCTTAGCATGATATGGCCATTGCAGCTGAGCCAGGCACTGCCTCGCCACCACCTATGGAAGCAGC  
TACTTCAGTGGGAGCCACATGTTCCCAACCGGCTGCTTTGACAGA

**ACGCGT**ACGCGGCCGCTCGAGCAGAACTCATCTCAGAAGAGGATCTGGCAGCAAATGATATCCTGGATT  
ACAAGGATGACGACGATAAGGTTTAA



**Protein Sequence:** >RC207852 protein sequence  
Red=Cloning site Green=Tags(s)

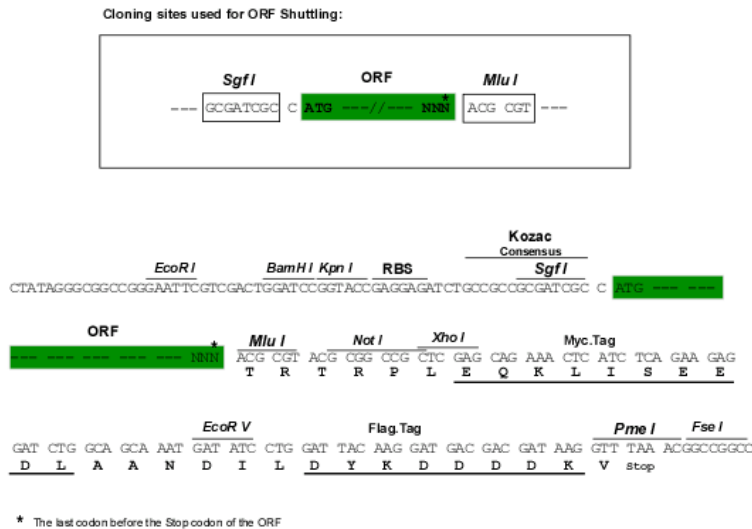
MMDEPWWEGRVASDVHCTLREKELKLPTRAHSPLLSRRFFVDILTLLSSHCQLCPAARHLAVYLLDHF  
MDRYNVTTSKQLYTVAVSCLLLANGVLLSPRLKCSGMI SAHCNHLHPGSSNSPASAPHPPTPPQVAET  
TGKFEDREDHVPKLEQINSTRILSSQNF TLTKKELLSTELLLEAFSWNLCLPTPAHFLDYLLASVSQK  
DHHCHTWPPTTCPRKTKECLKEYAHYFLEVTLQDHIFYKFQPSVVAACV GASRICLQLSPYWTRDLQRIS  
SYSLEHLSTCIEILLVVDNVLKDAVAVKSQLAMVPGTPPTPTQVLFQPPAYPALGQPATTLAQFQTPV  
QDLCLAYRDSLQAHRSGLLSGSTGSSLHTPYQLQLPDMCPVPVPASLSMHMAIAAEPHCLATTYGSS  
YFSGSHMFPTGCFDR

TRTRPLEQKLISEEDLAANDILDYKDDDDKV

**Chromatograms:** [https://cdn.origene.com/chromatograms/mk6343\\_b06.zip](https://cdn.origene.com/chromatograms/mk6343_b06.zip)

**Restriction Sites:** SgfI-MluI

**Cloning Scheme:**



**ACCN:** NM\_024565

**ORF Size:** 1305 bp

**OTI Disclaimer:** The molecular sequence of this clone aligns with the gene accession number as a point of reference only. However, individual transcript sequences of the same gene can differ through naturally occurring variations (e.g. polymorphisms), each with its own valid existence. This clone is substantially in agreement with the reference, but a complete review of all prevailing variants is recommended prior to use. [More info](#)

**OTI Annotation:** This clone was engineered to express the complete ORF with an expression tag. Expression varies depending on the nature of the gene.

**Components:** The ORF clone is ion-exchange column purified and shipped in a 2D barcoded Matrix tube containing 10ug of transfection-ready, dried plasmid DNA (reconstitute with 100 ul of water).

**Reconstitution Method:**

1. Centrifuge at 5,000xg for 5min.
2. Carefully open the tube and add 100ul of sterile water to dissolve the DNA.
3. Close the tube and incubate for 10 minutes at room temperature.
4. Briefly vortex the tube and then do a quick spin (less than 5000xg) to concentrate the liquid at the bottom.
5. Store the suspended plasmid at -20°C. The DNA is stable for at least one year from date of shipping when stored at -20°C.

**RefSeq:** [NM\\_024565.7](#)

**RefSeq Size:** 3274 bp

**RefSeq ORF:** 1308 bp

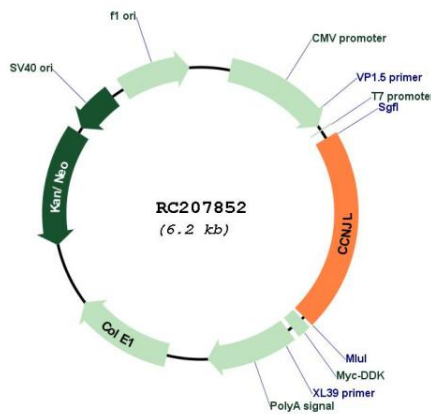
**Locus ID:** 79616

**UniProt ID:** [Q8IV13](#)

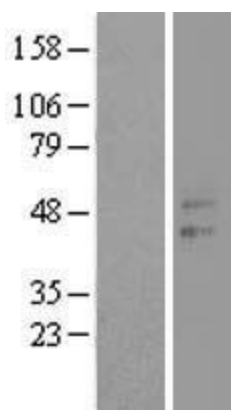
**Cytogenetics:** 5q33.3

**MW:** 48.4 kDa

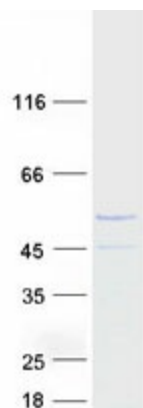
**Product images:**



Circular map for RC207852



Western blot validation of overexpression lysate (Cat# [LY411233]) using anti-DDK antibody (Cat# [TA50011-100]). Left: Cell lysates from untransfected HEK293T cells; Right: Cell lysates from HEK293T cells transfected with RC207852 using transfection reagent MegaTran 2.0 (Cat# [TT210002]).



Coomassie blue staining of purified CCNJL protein (Cat# [TP307852]). The protein was produced from HEK293T cells transfected with CCNJL cDNA clone (Cat# RC207852) using MegaTran 2.0 (Cat# [TT210002]).