

Product datasheet for **RC207850**

SLC26A11 (NM_173626) Human Tagged ORF Clone

Product data:

Product Type:	Expression Plasmids
Product Name:	SLC26A11 (NM_173626) Human Tagged ORF Clone
Tag:	Myc-DDK
Symbol:	SLC26A11
Mammalian Cell Selection:	Neomycin
Vector:	pCMV6-Entry (PS100001)
E. coli Selection:	Kanamycin (25 ug/mL)



[View online »](#)

ORF Nucleotide Sequence:

>RC207850 ORF sequence
 Red=Cloning site Blue=ORF Green=Tags(s)

TTTTGTAATACGACTCACTATAGGGCGGCCGGAATTCGTCGACTGGATCCGGTACCGAGGAGATCTGCC
 GCC**CGGATCGCC**

ATGCCTTCTTCGGTGACGGCGCTGGGTACAGCCAGGTCCTCTGGCCCCGGGATGGCCCCAGCGCCTGCT
 GCTGCTCCCTGCGGCCCTGCAGAGGAGGCTGCCCATCCTGGCGTGGCTGCCCAGCTACTCCTGCAGTG
 GCTGAAGATGGATTTCTGTCGCCGCTCTCAGTTGGCCTCACTGCCATCCCCAGGCGCTGGCCTATGCT
 GAAGTGGCTGGACTCCCGCCCAGTATGGCCTCTACTCTGCCTCATGGGCTGCTTCGTGTATTTCTTCC
 TGGGCACCTCCCGGGATGTGACTCTGGGCCACCGCCATTATGTCCCTCCTGGTCTCCTTACACCTT
 CCATGAGCCCGCTACGCTGTGCTGGCCTTCTGTCCGGCTGCATCCAGCTGGCCATGGGGTCTGT
 CGTTTGGGTTCTGCTGGACTTCATTTCTACCCCGTCATTAAGGCTTCACTCTGCTGCTGCCGTCA
 CCATCGGCTTTGGACAGATCAAGAACCTGCTGGGACTACAGAACATCCCCAGGCCGTTCTTCTGCAGGT
 GTACCACACCTTCTCAGGATTGCAGAGACCAGGTTAGGTGACGCCGCTCTGGGGTGGTCTGCATGCTG
 CTGCTGCTGGTGTGAAGCTGATGCGGGACCACGTGCCTCCCGTCCACCCGAGATGCCCCCTGGTGTGC
 GGCTCAGCCGTGGGCTGGTCTGGGCTGCCACGACAGCTCGCAACGCCCTGGTGGTCTCCTTCGACGCCCT
 GGTGCGTACTCCTTCGAGGTGACTGGATACCAGCCTTTCATCCTAACAGGGGAGACAGCTGAGGGGCTC
 CCTCCAGTCCGGATCCCGCCCTTCTCAGTGACCACAGCCAACGGGACGATCTCCTTACCAGAGATGGTGC
 AGGACATGGGAGCCGGGCTGGCCGTGGTCCCTGATGGGCTCCTGGAGAGCATTGGCGTGGCCAAAGC
 CTTGCGATCTCAGAATAATTACCGCATCGATGCCAACCAGGAGCTGCTGGCCATCGGTCTACCAACATG
 TTGGGCTCCCTCGTCTCCTCTACCCGGTACAGGCAGCTTTGGACGGACAGCCGTGAACGCTCAGTCGG
 GGGTGTGCACCCCGGGGGGCTGGTGACGGGAGTGTGGTGTGCTGTCTCTGGACTACCTGACCTC
 ACTGTTCTACTACATCCCAAGTCTGCCCTGGCTGCCGTATCATCATGGCCGTGGCCCGCTGTTCCGAC
 ACCAAGATCTTACAGGACGCTCTGGCGTGTAAAGAGGCTGGACCTGCTGCCCTGTGCGTGACCTTCTG
 TGTGCTTCTGGGAGTGCAGTACGGCATCCTGGCCGGGCCCTGGTGTCTCTGCTCATGCTCCTGCACTC
 TGCAGCCAGGCCCTGAGACCAAGGTGTCAGAGGGGCCGTTCTGGTCTGCAGCCGGCCAGCGCCTGTCC
 TTCCCTGCCATGGAGGCTCTGCGGGAGGAGATCCTAAGCCGGGCCCTGGAAGTGTCCCGCCACGCTGCC
 TGGTCTGGAGTGCACCCATGTCTGCAGCATCGACTACACTGTGGTGTGGGACTCGCGAGCTCCTCCA
 GGACTTCCAGAAGCAGGGCGTCGCCCTGGCCTTTGTGGGCTGCAGGTCCCGTCTCCGTGCTGCTG
 TCCGCTGACCTGAAGGGTTCCAGTACTTCTTACCCTGGAAGAAGCAGAGAAGCACCTGAGGCAGAAGC
 CAGGGACCCAGCCCTACAACATCAGAGAAGACTCCATTCTGGACCAAAGGTTGCCCTGCTCAAGGCA

ACGCGTACGCGGCCGCTCGAGCAGAAACTCATCTCAGAAGAGGATCTGGCAGCAAATGATATCCTGGATT
 ACAAGGATGACGACGATAAGGTTTAA

Protein Sequence:

>RC207850 protein sequence
 Red=Cloning site Green=Tags(s)

MPSSVTALGQARSSGPGMAPSACCCSPAALQRRLPILAWLPSYSLQWLKMDFVAGLSVGLTAIPQALAYA
 EVAGLPPQYGLYSAFMGCFVYFFLGTSRDVTLPPTAIMSLLVSFYTFHEPAYAVLLAFLSGCIQLAMGVL
 RLGFLLDFISYPVIKGFSAAAVTIGFGQIKNLLGLQNIIPRPFLLQVYHTFLRIAETRVGDVAVLGLVCM
 LLLVLKLMRDHVPVHPPEMPGVRLSRGLVWAATTARNALVVSFAALVAYSFEVTGYQPFILTGETAEGL
 PPVRIIPFVSVTANGTISFTEMVQDMGAGLAVVPLMGLLESIAVAKAFASQNNYRIDANQELLAIGLTNM
 LGSLVSSYPVTGSFGRNAVNAQSGVCTPAGGLVTGVLVLLSLDYLTSFYYPKSALAAVIMAVAPLFD
 TKIFRTLWRVKRLDLLPLCVTFLLCFWEVQYIGILAGALVSLMLLHSAARPETKVSEGPVLLQPASGLS
 FPAMEALREEILSRALEVSPRCLVLECTHVCSIDYTVVLLGLGELLQDFQKQGVALLAFVGLQVPVLRVLL
 SADLKGQYFSTLEEAEKHLRQKPGTQPYNIREDSSILDQKVALLKA

TRTRPLEQKLISEEDLAANDILDYKDDDDKV

Chromatograms:

https://cdn.origene.com/chromatograms/mk6343_a12.zip

Restriction Sites: SgfI-MluI

Cloning Scheme:



ACCN: NM_173626

ORF Size: 1818 bp

OTI Disclaimer: The molecular sequence of this clone aligns with the gene accession number as a point of reference only. However, individual transcript sequences of the same gene can differ through naturally occurring variations (e.g. polymorphisms), each with its own valid existence. This clone is substantially in agreement with the reference, but a complete review of all prevailing variants is recommended prior to use. [More info](#)

OTI Annotation: This clone was engineered to express the complete ORF with an expression tag. Expression varies depending on the nature of the gene.

Components: The ORF clone is ion-exchange column purified and shipped in a 2D barcoded Matrix tube containing 10ug of transfection-ready, dried plasmid DNA (reconstitute with 100 ul of water).

- Reconstitution Method:
1. Centrifuge at 5,000xg for 5min.
 2. Carefully open the tube and add 100ul of sterile water to dissolve the DNA.
 3. Close the tube and incubate for 10 minutes at room temperature.
 4. Briefly vortex the tube and then do a quick spin (less than 5000xg) to concentrate the liquid at the bottom.
 5. Store the suspended plasmid at -20°C. The DNA is stable for at least one year from date of shipping when stored at -20°C.

RefSeq: [NM_173626.4](#)

RefSeq Size: 2927 bp

RefSeq ORF: 1821 bp

Locus ID: 284129

UniProt ID: [Q86WA9](#)

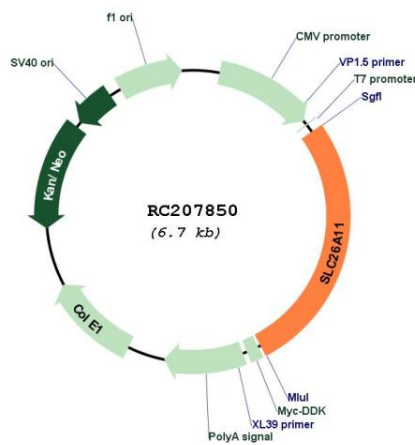
Cytogenetics: 17q25.3

Protein Families: Transmembrane

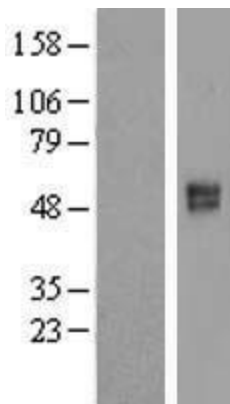
MW: 65.3 kDa

Gene Summary: This gene encodes a member of the solute linked carrier 26 family of anion exchangers. Members of this family of proteins are essential for numerous cellular functions including homeostasis and intracellular electrolyte balance. The encoded protein is a sodium independent sulfate transporter that is sensitive to the anion exchanger inhibitor 4,4'-diisothiocyanostilbene-2,2'-disulfonic acid. Alternate splicing results in multiple transcript variants.[provided by RefSeq, Oct 2009]

Product images:



Circular map for RC207850



Western blot validation of overexpression lysate (Cat# [LY406515]) using anti-DDK antibody (Cat# [TA50011-100]). Left: Cell lysates from untransfected HEK293T cells; Right: Cell lysates from HEK293T cells transfected with RC207850 using transfection reagent MegaTran 2.0 (Cat# [TT210002]).