

Product datasheet for RC207849

PRSS35 (NM_153362) Human Tagged ORF Clone

Product data:

Product Type:	Expression Plasmids
Product Name:	PRSS35 (NM_153362) Human Tagged ORF Clone
Tag:	Myc-DDK
Symbol:	PRSS35
Synonyms:	C6orf158; dj223E3.1
Mammalian Cell Selection:	Neomycin
Vector:	pCMV6-Entry (PS100001)
E. coli Selection:	Kanamycin (25 ug/mL)
ORF Nucleotide Sequence:	>RC207849 ORF sequence Red=Cloning site Blue=ORF Green=Tags(s)

TTTTGTAATACGACTCACTATAGGGCGCCGGGAATTCGTCGACTGGATCCGGTACCGAGGAGATCTGCC
GCC**CGATCGCC**

ATGGAAAATATGCTGCTTTGGTTGATATTTTTACCCCTGGTGGACCCTCATTGATGGATCTGAAATGG
AATGGGATTTTATGTGGCACTTGAGAAAGGTACCCCGATTGTCAGTGAAAGGACTTTCCATCTCACCAG
CCCCGATTTGAGGCAGATGCTAAGATGATGGTAAATACAGTGTGTGGCATCGAATGCCAGAAAGA
CTCCAACCTCCAGCCTTTCTGAATTGGAGGATTATCTTTCTATGAGACTGTCTTTGAGAATGCCACCCGAA
CCTTAACCAGGGTGAAAGTTCAAGATTTGGTTCTTGAGCCGACTCAAAATATCACCACAAAGGGAGTATC
TGTTAGGAGAAAGAGACAGGTGTATGGCACCGACAGCAGGTTGAGCATCTTGACAAAAGGTTCTTAACC
AATTTCCCTTTAGCACAGCTGTGAAGCTTTCCACGGGCTGTAGTGGCATTCTCATTTCCTCAGCATG
TTCTAACTGCTGCCACTGTGTTGATGATGAAAGGACTATGTCAAAGGGAGTAAAAAGCTAAGGGTAGG
GTTGTTGAAGTAGGAAATAAAGTGGAGGCAAGAAACGTGAGGTTCTAAGAGGAGCAGGAGAGAAGCT
AGTGGTGGTGACCAAGAGAGGGTACCAGAGAGCATCTGCAGGAGAGAGCGAAGGGTGGGAGAAGAAGAA
AAAAATCTGGCCGGGTGAGGATTGCCGAAGGGAGGCCTTCTTTGAGTGGACCCGGGTCAAGAATAC
CCACATTCGAAGGGCTGGGCACGAGGAGCATGGGGACGCTACCTGGACTATGACTATGCTCTTCTG
GAGCTGAAGCGTGTCTACAAAAAGAAATACATGGAACCTTGAATCAGCCCAACGATCAAGAAAATGCCTG
GTGGAATGATCCACTTCTCAGGATTTGATAACGATAGGGCTGATCAGTTGGTCTATCGGTTTTGAGTGT
GTCCGACGAATCCAATGATCTCCTTTACCAATACTGCGATGCTGAGTCCGGCTCCACCGGTTCCGGGGT
TATCTGCGTCTGAAAGATCCAGACAAAAAGAAATGGAAGCGCAAATCATTGCGGTCTACTCAGGCACC
AGTGGGTGGATGTCCACGGGTTGAGAAGGACTACAACGTTGCTGTTGCGATCACTCCCCTAAAATACGC
CCAGATTTGCCTCTGGATTACGGGAACGATGCCAATTGTGCTTACGGC

ACGCGTACGCGGCCGCTCGAGCAGAAACTCATCTCAGAAGAGGATCTGGCAGCAAATGATATCCTGGATT
ACAAGGATGACGACGATAAGGTTTAA



[View online >](#)

Protein Sequence: >RC207849 protein sequence
 Red=Cloning site Green=Tags(s)

MENMLLWLIFFTPGWTLIDGSEMEWDFMWHLRKVPRIVSERTFHLTSPAFAEADAKMMVNTVCGIECQKEL
 PTPSLSELEDYLSYETVFENGRTLTRVKVQDLVLEPTQNIITTKGVSRRKRQVYGTDSRFSILDKRFLT
 NFPFSTAVKLSTGCSGILISPOHVLTAACHVHDGKDYVKGSKLVRGLLKMNRKSGGKRRRGSKRSRREA
 SGGDQREGTREHLQERAKGRRRRKSSGRGQRIAEGRPSFQWTRVKNTHIPKGWARGMGDADLDYDYALL
 ELKRAHKKKYMELGISPTIKKMPGGMIHFSGFDNDRADQLVYRFCSVSDSNDLLYQYCDAESGSTGSGV
 YLRLKDPDKKNWKRKIIAVYSGHQVVDVHGVQKDYNAVAVRITPLKYAQICLWIHGNDANCAYG

TRTRPLEQKLISEEDLAANDILDYKDDDDKV

Chromatograms: https://cdn.origene.com/chromatograms/mk6236_c06.zip

Restriction Sites: SgfI-MluI

Cloning Scheme:



ACCN: NM_153362

ORF Size: 1239 bp

OTI Disclaimer: The molecular sequence of this clone aligns with the gene accession number as a point of reference only. However, individual transcript sequences of the same gene can differ through naturally occurring variations (e.g. polymorphisms), each with its own valid existence. This clone is substantially in agreement with the reference, but a complete review of all prevailing variants is recommended prior to use. [More info](#)

OTI Annotation: This clone was engineered to express the complete ORF with an expression tag. Expression varies depending on the nature of the gene.

Components: The ORF clone is ion-exchange column purified and shipped in a 2D barcoded Matrix tube containing 10ug of transfection-ready, dried plasmid DNA (reconstitute with 100 ul of water).

Reconstitution Method:

1. Centrifuge at 5,000xg for 5min.
2. Carefully open the tube and add 100ul of sterile water to dissolve the DNA.
3. Close the tube and incubate for 10 minutes at room temperature.
4. Briefly vortex the tube and then do a quick spin (less than 5000xg) to concentrate the liquid at the bottom.
5. Store the suspended plasmid at -20°C. The DNA is stable for at least one year from date of shipping when stored at -20°C.

RefSeq: [NM_153362.1](#), [NP_699193.1](#)

RefSeq Size: 2527 bp

RefSeq ORF: 1242 bp

Locus ID: 167681

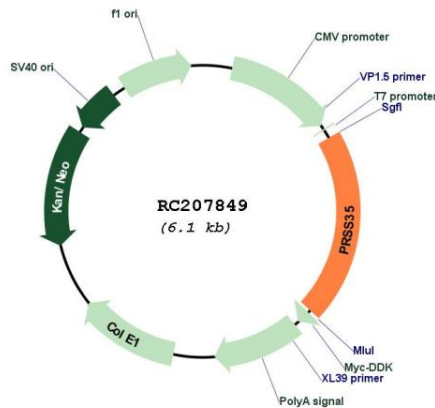
UniProt ID: [Q8N3Z0](#)

Cytogenetics: 6q14.2

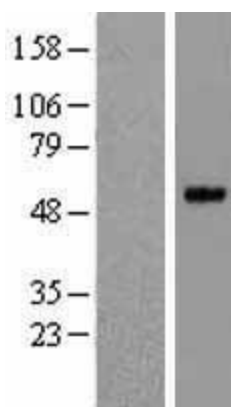
Protein Families: Druggable Genome, Protease

MW: 47.1 kDa

Product images:



Circular map for RC207849



Western blot validation of overexpression lysate (Cat# [LY407075]) using anti-DDK antibody (Cat# [TA50011-100]). Left: Cell lysates from untransfected HEK293T cells; Right: Cell lysates from HEK293T cells transfected with RC207849 using transfection reagent MegaTran 2.0 (Cat# [TT210002]).