

Product datasheet for **RC207846**

SLC25A45 (NM_001077241) Human Tagged ORF Clone

Product data:

Product Type: Expression Plasmids
 Product Name: SLC25A45 (NM_001077241) Human Tagged ORF Clone
 Tag: Myc-DDK
 Symbol: SLC25A45
 Mammalian Cell Selection: Neomycin
 Vector: pCMV6-Entry (PS100001)
 E. coli Selection: Kanamycin (25 ug/mL)
 ORF Nucleotide Sequence: >RC207846 ORF sequence
 Red=Cloning site Blue=ORF Green=Tags(s)

TTTTGTAATACGACTCACTATAGGGCGGCCGGAATTCGTCGACTGGATCCGGTACCGAGGAGATCTGCC
 GCC**CGATCGCC**

ATGGTCAAGATTTACGCCATGAGTCCCTCCTGGGCTTCTTAAGGGAATGAGCTTCCCCATTGCCAGCA
 TAGCTGTGGTCAACTCTGTCCTGTTGGGGTCTATAGCAACACCCTGCTGGTGCTCACGGCCACCTCCCA
 CCAGGAGCGGGCGGCCAGCCGCCAGCTACATGCACATCTTCTAGCGGGTGCACCGGGGGTTCCTG
 CAGGCCTACTGTCTGGCTCCTTTTGACCTCATCAAAGTCCGGCTACAAAACCAGACAGACCAAGGGCCC
 AGCCAGGGAGCCCCACCCCGGTACCAGGGGCCGTGCACTGTGCAGCCTCCATCTTCCGGGAGGAGGG
 GCCCGGGGGCTGTTCCGAGGAGCCTGGGCCCTGACGCTGAGGGACACCCACGGTGGGGATCTACTTC
 ATCACCTATGAAGGGCTCTGTCGCCAGTACACACCAGAAGGCCAGAATCCAGCTCAGCCACGGTCTGG
 TGGCAGGGGGCTTTCAGGCATTGCTTCTGGGTGGCAGCCACGCCCTTAGACGTGATCAAGTCCCGGAT
 GCAGATGGATGGACTGAGACGCAGAGTGTACCAGGGGATGCTGGACTGCATGGTGAGCAGCATCCGGCAG
 GAAGGACTGGGAGTCTTCTTCCGGGGGTACCATCAACAGTGCCCGGCCTTCCCGTCAATGCTGTCA
 CCTTCTCAGCTACGAATATCTCTCCGCTGGTGGGA

ACGCGTACGCGGCCGCTCGAGCAGAACTCATCTCAGAAGAGGATCTGGCAGCAAATGATATCTGGATT
 ACAAGGATGACGACGATAAGGTTTAA



[View online »](#)

Protein Sequence: >RC207846 protein sequence
 Red=Cloning site Green=Tags(s)

MVKIYRHESLLGFFKMSFPIASIAVNSVLFGVYSNTLLVLTATSHQERRAQQPSYMHIFLAGCTGGFL
 QAYCLAPFDLIKVRLQNQTEPRAQPGSPPPRYQGPVHCAASIFREEGPRGLFRGAWALTLRDTPTVGIYF
 IITYEGLCRQYTPEGQNPSSATVLVAGGFAGIASWVAATPLDVIKSRMQMDGLRRRVYQGMDCMVSSIRQ
 EGLGVFFRQVTTINSARAFPVNAVTFLSYEYLLRWGG

TRTRPLEQKLISEEDLAANDILDYKDDDDKV

Chromatograms: https://cdn.origene.com/chromatograms/mk6343_d11.zip

Restriction Sites: SgfI-MluI

Cloning Scheme:



ACCN: NM_001077241

ORF Size: 738 bp

OTI Disclaimer: The molecular sequence of this clone aligns with the gene accession number as a point of reference only. However, individual transcript sequences of the same gene can differ through naturally occurring variations (e.g. polymorphisms), each with its own valid existence. This clone is substantially in agreement with the reference, but a complete review of all prevailing variants is recommended prior to use. [More info](#)

OTI Annotation: This clone was engineered to express the complete ORF with an expression tag. Expression varies depending on the nature of the gene.

Components: The ORF clone is ion-exchange column purified and shipped in a 2D barcoded Matrix tube containing 10ug of transfection-ready, dried plasmid DNA (reconstitute with 100 ul of water).

Reconstitution Method:

1. Centrifuge at 5,000xg for 5min.
2. Carefully open the tube and add 100ul of sterile water to dissolve the DNA.
3. Close the tube and incubate for 10 minutes at room temperature.
4. Briefly vortex the tube and then do a quick spin (less than 5000xg) to concentrate the liquid at the bottom.
5. Store the suspended plasmid at -20°C. The DNA is stable for at least one year from date of shipping when stored at -20°C.

RefSeq: [NM_001077241.2](#), [NP_001070709.2](#)

RefSeq Size: 2252 bp

RefSeq ORF: 741 bp

Locus ID: 283130

UniProt ID: [Q8N413](#)

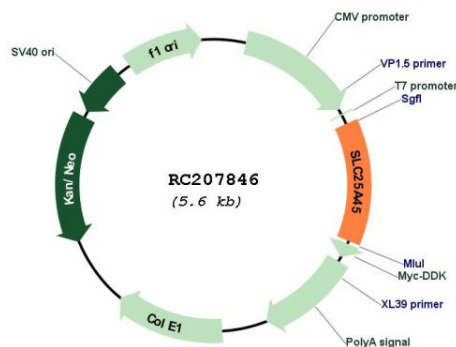
Cytogenetics: 11q13.1

Protein Families: Druggable Genome, Transmembrane

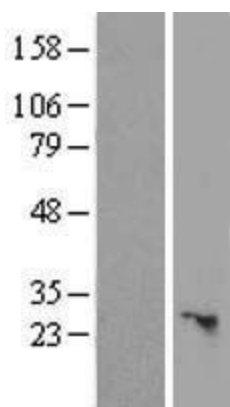
MW: 27.3 kDa

Gene Summary: SLC25A45 belongs to the SLC25 family of mitochondrial carrier proteins (Haitina et al., 2006 [PubMed 16949250]).[supplied by OMIM, Mar 2008]

Product images:



Circular map for RC207846



Western blot validation of overexpression lysate (Cat# [LY421389]) using anti-DDK antibody (Cat# [TA50011-100]). Left: Cell lysates from untransfected HEK293T cells; Right: Cell lysates from HEK293T cells transfected with RC207846 using transfection reagent MegaTran 2.0 (Cat# [TT210002]).