

Product datasheet for **RC207838**

LKAAEAR1 (NM_001007125) Human Tagged ORF Clone

Product data:

Product Type: Expression Plasmids
Product Name: LKAAEAR1 (NM_001007125) Human Tagged ORF Clone
Tag: Myc-DDK
Symbol: LKAAEAR1
Synonyms: C20orf201
Mammalian Cell Selection: Neomycin
Vector: pCMV6-Entry (PS100001)
E. coli Selection: Kanamycin (25 ug/mL)
ORF Nucleotide Sequence: >RC207838 ORF sequence
Red=Cloning site Blue=ORF Green=Tags(s)

TTTTGTAATACGACTCACTATAGGGCGGCCGGAATTCGTCGACTGGATCCGGTACCGAGGAGATCTGCC
GCC**CGATCGCC**

ATGCCCGCCAGCGAAGGAGGGCGGGCGCAAGGGCCCGGGAGCGAAGCGGGAAGAGCGCCAGGCA
CGGCGCAGGGTGAGGAGCGTGCCAAGGGGGCGCCCGCAGAGAGCCCCAAGCCGGGCTGGGCCCTGAC
GCCCGAGGGACTGGCGGCCATGCTCCCTGCGCAGCGCCACCGCCATCTGCTTTCGGCGACTGCTGGAG
GACGTGGGCGCGCGGCCCTCCACCTTCCCGTGCGGGTGGTGAACCGGGGTACCGCATGCCGACCCGC
GCCCGTGGACGCAGTCGCTCGAGCTGCCCGCCGAGCGCCAGAACCGGCTCCTCGGCGTCTCAAGGCAGC
GGAGGCCCGGGCGAGTCCGCGCCCTGCGGCTGCGCTACACCCGCATGCGGGCCGAGGAGATCGCGCTG
CTCATCCAGCGGCAAGTCCGCGCGCGCCATCCGGCTGGAGCTGTTCTGCCCGCGAGCTGAAGC
CCGCGCGGATCCCGGACCCCTGGACCGCCAAGAGGTGCAGACAAGCCCCGGTAGGGGCGGGAAAGGGG
AGGGGCCCTGCCCGCCTCCGCACACGCCGACCCAGCCTCTCTCCCGGCGAGCGGAGGCGCGTGGAGAC
CATCCTGGAGGAGAACGTGGATGGACCATCTTCCCGGCGTACGGCGACTGAGAGTGTGCGACGCGCCC
CAGCCTCCACATAAAGTTA

ACGCGTACGCGGCCGCTCGAGCAGAACTCATCTCAGAAGAGGATCTGGCAGCAAATGATATCCTGGATT
ACAAGGATGACGACGATAAGGTTTAA



[View online »](#)

Protein Sequence: >RC207838 protein sequence
 Red=Cloning site Green=Tags(s)

MPPPAKEGGRKGPRESGKSAPGTAQGEERAKGAPATEPPKPGWALTPQGLAAMLPAQRHRHLLFGDLLL
 DVGAAASTFPCGSVEPGYRMPDRPWTSLELPAERQNRLGVLKAAEARGRVRLRLRYTRMRAEEIAL
 LIQRQKSARAAIRLELFLPPQLKPARIPDPLDRQEVQTSPPGRGGGALPASAHAGPQLSPAAREARGD
 HPGGERGWHHLPAVTATESVRRAPASHIKL

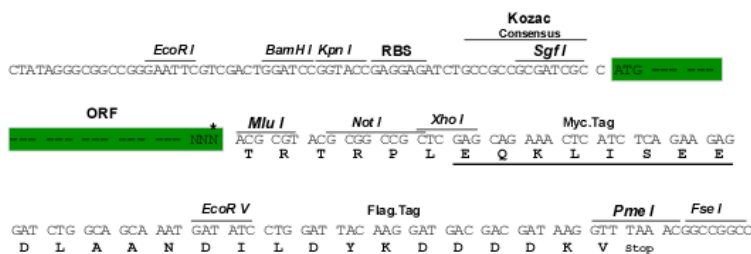
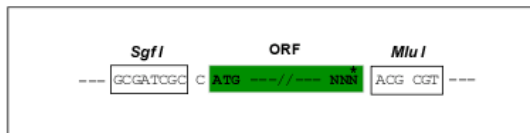
TRTRPLEQKLISEEDLAANDILDYKDDDDKV

Chromatograms: https://cdn.origene.com/chromatograms/mk6792_c12.zip

Restriction Sites: SgfI-MluI

Cloning Scheme:

Cloning sites used for ORF Shuttling:



* The last codon before the Stop codon of the ORF

ACCN: NM_001007125

ORF Size: 720 bp

OTI Disclaimer: The molecular sequence of this clone aligns with the gene accession number as a point of reference only. However, individual transcript sequences of the same gene can differ through naturally occurring variations (e.g. polymorphisms), each with its own valid existence. This clone is substantially in agreement with the reference, but a complete review of all prevailing variants is recommended prior to use. [More info](#)

OTI Annotation: This clone was engineered to express the complete ORF with an expression tag. Expression varies depending on the nature of the gene.

Components: The ORF clone is ion-exchange column purified and shipped in a 2D barcoded Matrix tube containing 10ug of transfection-ready, dried plasmid DNA (reconstitute with 100 ul of water).

Reconstitution Method:

1. Centrifuge at 5,000xg for 5min.
2. Carefully open the tube and add 100ul of sterile water to dissolve the DNA.
3. Close the tube and incubate for 10 minutes at room temperature.
4. Briefly vortex the tube and then do a quick spin (less than 5000xg) to concentrate the liquid at the bottom.
5. Store the suspended plasmid at -20°C. The DNA is stable for at least one year from date of shipping when stored at -20°C.

RefSeq: [NM_001007125.1](#), [NP_001007126.1](#)

RefSeq Size: 894 bp

RefSeq ORF: 723 bp

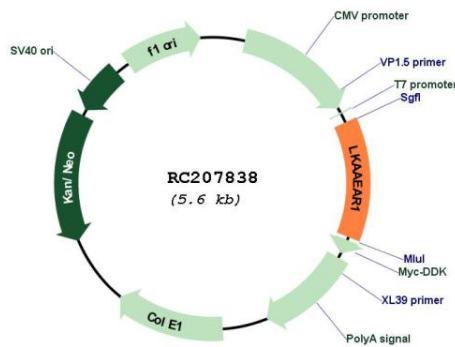
Locus ID: 198437

UniProt ID: [Q8TD35](#)

Cytogenetics: 20q13.33

MW: 25.8 kDa

Product images:



Circular map for RC207838