

Product datasheet for **RC207836**

EBF1 (NM_024007) Human Tagged ORF Clone

Product data:

Product Type:	Expression Plasmids
Product Name:	EBF1 (NM_024007) Human Tagged ORF Clone
Tag:	Myc-DDK
Symbol:	EBF1
Synonyms:	COE1; EBF; O/E-1; OLF1
Mammalian Cell Selection:	Neomycin
Vector:	pCMV6-Entry (PS100001)
E. coli Selection:	Kanamycin (25 ug/mL)



[View online »](#)

ORF Nucleotide Sequence:

>RC207836 ORF sequence
 Red=Cloning site Blue=ORF Green=Tags(s)

TTTTGTAATACGACTCACTATAGGGCGGCCGGAATTCGTCGACTGGATCCGGTACCGAGGAGATCTGCC
 GCC**GCGATCGCC**

ATGTTTGGGATTCAGAAAGCATCCAACGGAGTGAAGCAGCATGAAGGAAGAGCCGCTGGCGACGGCA
 TGAACGCGGTGCGGACGTGGATGCAAGGCGCCGGGTGCTGGACGCCAACACGGCGCGCAGAGCGGGT
 GGGTCTGGCCCGGCTCACTTTGAGAAGCAGCCGCTTCCAATCTGCGGAAATCCAATTCTTCCACTTC
 GTCCTGGCCCTACGACAGACAGGGCCAGCCGTGGAGATCGAGAGGACAGCGTTTGTGGGGTTCGTGG
 AGAAGGAAAAAGAAGCCAACAGCGAAAAGACCAATAACGGAACTCACTACCGGCTTCAGTTCTCTACAG
 CAATGGGATAAGGACGGAGCAGGATTTCTACGTGCGCCTATTGACTCCATGACAAAACAAGCCATAGTG
 TATGAAGGCCAAGACAAGAACCAGAAATGTGCCGAGTCTTGCTCACACATGAGATCATGTGCAGCCGCT
 GTTGTGACAAGAAAAGCTGTGGCAACCGAAATGAGACTCCCTCAGATCCAGTGATAATTGACAGGTTCTT
 CTTGAAATTTTTCTCAAATGTAACAAAATTGCCTAAAGAATGCGGGAAACCCAGTGACATGCGGAGA
 TTCCAGGTCGTGGTGTCTACGACAGTCAATGTGGATGGCCATGTCTTGGCAGTCTCTGATAACATGTTG
 TCCATAATAATTCCAAGCATGGGCGGAGGGCTCGGAGGCTTGACCCCTCGGAAGGTACGCCCTTATCT
 GGAACATGCTACTCCCTGTATCAAAGCCATCAGCCGAGTGAAGGATGGACGACGGGAGGTGCGACTGTG
 ATCATCATAGGGGACAATTTCTTTGATGGGTTACAGGTCAATTCGGTACCATGCTGGTCTGGAGTGAGT
 TGATCACTCCTCATGCCATCCGTGTGCAGACCCCTCCTCGGCACATCCCTGGTGTGTGGAAGTCACACT
 GTCCTACAAATCTAAGCAGTTCTGCAAAGGAACACCAGGCAGATTCAATTTACAGCGCTCAACGAACCC
 ACCATCGATTATGGTTTCCAGAGGTTACAGAAGGTCATTCTCGGCACCCTGGTGACCCTGAGCGTTTGC
 CAAAGGAAGTAATACTCAAAGGGCTCGGATCTGGTAGAAGCACTGTATGGGATGCCACACAACAACCA
 GGAAATCATTCTGAAGAGAGCGGCCGACATTGCCGAGGCCCTGTACAGTGTTCGCCGCAACCAACCA
 CTTCCCGCCCTTCTCAACCTCGGTCCACGACGGATGATGGGCGTGAATTCGTTCACTGGACAACCTGG
 CCGTGAATGTCTCCGAGGCATCACAAGCCACCAATCAGGGTTTCAACCGCAACTCAAGCAGCGTATCACC
 ACACGGGTACGTGCCGAGCACCCTCCCGAGCAGACCAACTATAACTCCGTCAACGAGCATGAACGGA
 TACGGCTCTGCCCAATGTCCAATTTGGGCGGCTCCCCACCTTCTCAACGGCTCAGCTGCCAATCCC
 CCTATGCCATAGTCCATCCAGCCCCACCATGGCTCCTCCACAAGCCTCCCTCCAACCTGCAGCAGCTC
 CTCGGGCATCTTCTCCTTCTCACCAGCCAACATGGTCTCAGCCGTGAAACAGAAGAGTGTCTTCGACCA
 GTCGTGAGACCCAGACCTCCACCTCCACCTGCACCAGCACAACGGGAACAGCCTGCAAGCGATAT
 CTGGCATGATTGTTCTCTATG

ACGCGTACGCGGCGGCTCGAGCAGAAACTCATCTCAGAAGAGGATCTGGCAGCAAATGATATCCTGGATT
 ACAAGGATGACGACGATAAGGTTTAA

Protein Sequence:

>RC207836 protein sequence
 Red=Cloning site Green=Tags(s)

MFGIQESIQRSGSSMKKEEPLGSGMNAVRTWMQGAGVLDANTAAQSGVGLARAHFEKQPPSNLRKSNFFHF
 VLALYDRQGQPVIEIERTAFVGFVEKEKEANSEKTNNGIHYRLQLLYSNGIRTEQDFYVRLIDSMTKQAI
 YEGQDKNPEMCRVLLTHEIMCSRCCDKKSCGNRNETPSDPVIIDRFLLKFFLKCNQNLKNAGNPRDMRR
 FQVVVSTTVNVDGHVLAUSDNMFVHNSKHGRRARRLDPSEGTPSYLEHATPCIKAIISPSEGWTTGGATV
 I IIGDNFFDGLQVIFGTMVWSELITPHAIRVQTPPRHIPGVVEVTL SYKSKQFCKGTPGRFIYALNEP
 TIDYGFQRLQKVI PRHPGDPERLPKEVILKRAADLVEALYGMPHNNQE IILKRAADIAEALYSVPRNHQ
 LPALANTSVHAGMMGVNSFSGQLAVNVSEASQATNQGFTRNSSVSPHGYVPSTTPQQTNYSVTTSMNG
 YGSAAMSNLGGSPFLNGSAANSPIAIVPSSPTMASSTSLPNSCSSSSGIFSFSPANMVS AVKQKSAFAP
 VVRPQTSPPPTCTSTNGNSLQAI SGMIVPPM

TRTRPLEQKLISEEDLAANDILDYKDDDDKV

Chromatograms:

https://cdn.origene.com/chromatograms/mk6147_a10.zip

Restriction Sites: SgfI-MluI

Cloning Scheme:



ACCN: NM_024007

ORF Size: 1773 bp

OTI Disclaimer: The molecular sequence of this clone aligns with the gene accession number as a point of reference only. However, individual transcript sequences of the same gene can differ through naturally occurring variations (e.g. polymorphisms), each with its own valid existence. This clone is substantially in agreement with the reference, but a complete review of all prevailing variants is recommended prior to use. [More info](#)

OTI Annotation: This clone was engineered to express the complete ORF with an expression tag. Expression varies depending on the nature of the gene.

Components: The ORF clone is ion-exchange column purified and shipped in a 2D barcoded Matrix tube containing 10ug of transfection-ready, dried plasmid DNA (reconstitute with 100 ul of water).

Reconstitution Method:

1. Centrifuge at 5,000xg for 5min.
2. Carefully open the tube and add 100ul of sterile water to dissolve the DNA.
3. Close the tube and incubate for 10 minutes at room temperature.
4. Briefly vortex the tube and then do a quick spin (less than 5000xg) to concentrate the liquid at the bottom.
5. Store the suspended plasmid at -20°C. The DNA is stable for at least one year from date of shipping when stored at -20°C.

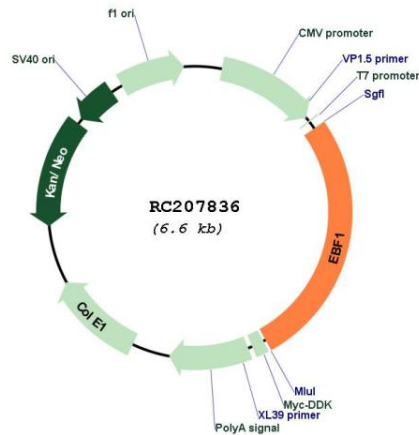
RefSeq: [NM_024007.5](#)

RefSeq Size: 5288 bp

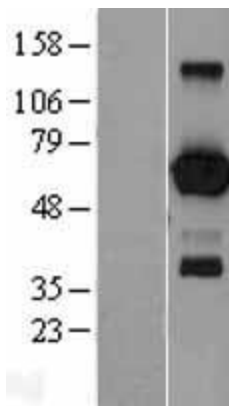
RefSeq ORF: 1776 bp

Locus ID: 1879

UniProt ID: [Q9UH73](#)
Cytogenetics: 5q33.3
Protein Families: Transcription Factors
MW: 64.5 kDa
Gene Summary: Transcriptional activator which recognizes variations of the palindromic sequence 5'-ATTCCCNNGGAATT-3'. [UniProtKB/Swiss-Prot Function]

Product images:


Circular map for RC207836



Western blot validation of overexpression lysate (Cat# [LY402969]) using anti-DDK antibody (Cat# [TA50011-100]). Left: Cell lysates from untransfected HEK293T cells; Right: Cell lysates from HEK293T cells transfected with RC207836 using transfection reagent MegaTran 2.0 (Cat# [TT210002]).