

## Product datasheet for **RC207834**

### **C13orf31 (LACC1) (NM\_153218) Human Tagged ORF Clone**

#### **Product data:**

Product Type:	Expression Plasmids
Product Name:	C13orf31 (LACC1) (NM_153218) Human Tagged ORF Clone
Tag:	Myc-DDK
Symbol:	C13orf31
Synonyms:	C13orf31; FAMIN; JUVAR
Mammalian Cell Selection:	Neomycin
Vector:	pCMV6-Entry (PS100001)
E. coli Selection:	Kanamycin (25 ug/mL)



[View online »](#)

**ORF Nucleotide Sequence:**

>RC207834 ORF sequence  
 Red=Cloning site Blue=ORF Green=Tags(s)

TTTTGTAATACGACTCACTATAGGGCGGCCGGAATTCGTCGACTGGATCCGGTACCGAGGAGATCTGCC  
 GCC**CGATCGCC**

ATGGCAGAAGCTGTTTTGATTGATCTTTTTGGTTTGAATTGAACTCTCAAAAAAAGTCCATCAGACAT  
 TACTGAAGACTTTGAATGCTGTCCAATACCACCATGCTGCCAAGGCCAAGTTTCTCTGTATAATGTGTTG  
 CAGTAACATCAGCTATGAAAGGGATGGAGAACAAGATAATTGTGAAATAGAAAACAAGCAATGGATTATCA  
 GCTCTCTTGAAGAATTTGAGATTGTTAGCTGTCCAGCATGGCTGCCACTTTGTATACCATTAACAGA  
 AAATTGATGAAAAAATCTGAGCAGCATTAAGGTAATTGTACCCAGGCACAGGAAGACATTAATGAAAGC  
 TTTTATTGATCAACTCTCACAGATGTTTACAATTTTGAATTTGAAGATTTGCAAGTGACTTTTAGGGGA  
 GGGCTTTTTAAACAGTCCATTGAAATAACGTAATCACAGCTCAAGAACTAAGAGGAATTCAGAATGAAA  
 TAGAAACATTTTTGAGAAGTCTGCCAGCACTGAGAGGAAAATTAATATTATCATTCTTCTTTGATCCC  
 AGATATTTTCATACATGGATTTACTACAAGAACAGGTGGGATATCTTATATACCAACTCTTAGCTCATT  
 AATCTCTTCAGTAGTCCAAACGGAGAGATCCCAAGGTAGTGGTTCAAGAAAATCTGCGTAGGTTGGCGA  
 ATGCTGCAGGATTAATGTGGAGAAATTTACCGAATAAAGACTCATCTCCAATGACATCTGGATTAT  
 GGAAGAAAGGAGCCTGACTCTTATGATGGAATAACCACAAAACAGAGAGGAGTCACAATAGCAGCTCTT  
 GGTGCAGACTGTATACCGATAGTTTTGTCAGATCCAGTCAAAAAGCATGTGGGGTTGCTCACGCTGGTT  
 GGAAAGGTACTTTGTGGGTGTTGCTATGGCTACAGTGAATGCTATGATAGCAGAATATGGCTGCAGTTT  
 GGAAGACATTGTTGTTGACTTGGACCTTCAGTAGGACCTTGCTGTTTTACTCTTCCAAGGAATCAGCA  
 GAGGCATTTATAATCTTCATCTGCATGTGTACAATTTGATTACCAAAATCCCTGTATCGACATCC  
 GTAAAGCCACAAGGATTTCTAGAACAGGGAGGAATTTCCACAGAATATTCAGGACCAGAACCAAGA  
 TCTCAACCTCTGTACATCTTGCCATCTGACAAGTTTTTCTCCCATGTCCGAGATGGCCCTAATTTTGGT  
 ACACAGATTGGCTTCATATCAATTAAGAA

**ACGCGT**ACGCGGCCGCTCGAGCAGAAACTCATCTCAGAAGAGGATCTGGCAGCAATGATATCCTGGATT  
 ACAAGGATGACGACGATAAGGTTTAA

**Protein Sequence:**

>RC207834 protein sequence  
 Red=Cloning site Green=Tags(s)

MAEAVLIDLFGLKLNQKNCHQTLKTLNAVQYHHAAKAKFLCIMCCSNISYERDGEQDNCEIETSNGLS  
 ALLEEFIEIVSCPSMAATLYTIKQKIDEKNLSSIKVIVPRHRKTLMKAFIDQLFTDVYNFEFEDLQVTRG  
 GLFKQSIEINVITAQELRGIQNEIETFLRSLPALRGKLTIIITSSLIPDIFIHGFTTRTGGISYIPTLSSF  
 NLFSSSKRRDPKVVVQENLRRLANAAGFNVEKFYRIKTHHSNDIWIWIMGRKEPDSYDGITTNQRGVTIAAL  
 GADCIPIVFADPVKKACGVAHAGWKGTLLGVAMATVNAMIAEYGCSELEDIVVVLGPSVGPCCFTLPRESA  
 EAFHNLHPACVQLFDSNPNCIDIRKATRILLEQGGILPQNIQDQNDLNLCTSCHPDKFFSHVRDGLNFG  
 TQIGFISIKE

**TR**TRPLEQKLISEEDLAANDILDYKDDDDKV

**Chromatograms:**

[https://cdn.origene.com/chromatograms/mk6338\\_e10.zip](https://cdn.origene.com/chromatograms/mk6338_e10.zip)

**Restriction Sites:**

SgfI-MluI

**Cloning Scheme:**


**ACCN:** NM\_153218

**ORF Size:** 1290 bp

**OTI Disclaimer:** The molecular sequence of this clone aligns with the gene accession number as a point of reference only. However, individual transcript sequences of the same gene can differ through naturally occurring variations (e.g. polymorphisms), each with its own valid existence. This clone is substantially in agreement with the reference, but a complete review of all prevailing variants is recommended prior to use. [More info](#)

**OTI Annotation:** This clone was engineered to express the complete ORF with an expression tag. Expression varies depending on the nature of the gene.

**Components:** The ORF clone is ion-exchange column purified and shipped in a 2D barcoded Matrix tube containing 10ug of transfection-ready, dried plasmid DNA (reconstitute with 100 ul of water).

- Reconstitution Method:**
1. Centrifuge at 5,000xg for 5min.
  2. Carefully open the tube and add 100ul of sterile water to dissolve the DNA.
  3. Close the tube and incubate for 10 minutes at room temperature.
  4. Briefly vortex the tube and then do a quick spin (less than 5000xg) to concentrate the liquid at the bottom.
  5. Store the suspended plasmid at -20°C. The DNA is stable for at least one year from date of shipping when stored at -20°C.

**RefSeq:** [NM\\_153218.4](#)

**RefSeq Size:** 4124 bp

**RefSeq ORF:** 1293 bp

**Locus ID:** 144811

**UniProt ID:** [Q8IV20](#)

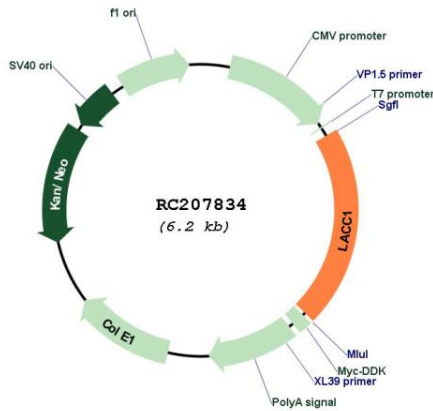
**Cytogenetics:** 13q14.11

**Domains:** DUF152

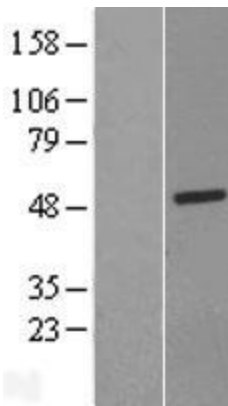
**MW:** 47.8 kDa

**Gene Summary:** This gene encodes an oxidoreductase that promotes fatty-acid oxidation, with concomitant inflammasome activation, mitochondrial and NADPH-oxidase-dependent reactive oxygen species production, and bactericidal activity of macrophages. The encoded protein forms a complex with fatty acid synthase on peroxisomes and is thought to be modulated by peroxisome proliferator-activated receptor signaling events. Naturally occurring mutations in this gene are associated with inflammatory bowel disease, Behcet's disease, leprosy, ulcerative colitis, early-onset Crohn's disease, and systemic juvenile idiopathic arthritis. [provided by RefSeq, Apr 2017]

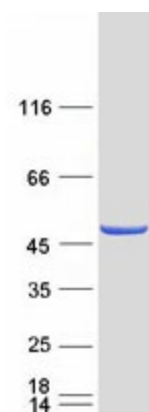
**Product images:**



Circular map for RC207834



Western blot validation of overexpression lysate (Cat# [LY426942]) using anti-DDK antibody (Cat# [TA50011-100]). Left: Cell lysates from untransfected HEK293T cells; Right: Cell lysates from HEK293T cells transfected with [RC225705] using transfection reagent MegaTran 2.0 (Cat# [TT210002]).



Coomassie blue staining of purified LACC1 protein (Cat# [TP307834]). The protein was produced from HEK293T cells transfected with LACC1 cDNA clone (Cat# RC207834) using MegaTran 2.0 (Cat# [TT210002]).