

Product datasheet for **RC207833**

HBM (NM_001003938) Human Tagged ORF Clone

Product data:

Product Type:	Expression Plasmids
Product Name:	HBM (NM_001003938) Human Tagged ORF Clone
Tag:	Myc-DDK
Symbol:	HBM
Synonyms:	HBAP2; HBK
Mammalian Cell Selection:	Neomycin
Vector:	pCMV6-Entry (PS100001)
E. coli Selection:	Kanamycin (25 ug/mL)
ORF Nucleotide Sequence:	>RC207833 ORF sequence Red=Cloning site Blue=ORF Green=Tags(s)

TTTTGTAATACGACTCACTATAGGGCGGCCGGAATTCGTCGACTGGATCCGGTACCGAGGAGATCTGCC
GCC**CGATCGCC**

ATGCTCAGCGCCAGGAGCGCGCCAAATCGCGCAGGTCTGGACCTGATTGCGGGCCACGAGGCGCAAT
TCGGGGCGGAGCTGCTGCTCAGGCTCTTCACGGTGTACCCAGCACCAAGGTCTACTTCCCGCACCTGAG
CGCCTGCCAGGACGCGACGCGCTGCTGAGCCACGGGCAGCGCATGCTGGCGGCTGTGGGCGGGCGGTG
CAGCACGTGGACAACCTGCGCGCCGCGCTGAGCCCGCTGGCGGACCTGCACGCGCTCGTGTGCGCGTGG
ACCCAGCCAACCTTCCGCTGCTAATCCAGTGTTTCCACGTGCTGCTGGCCTCCCACCTGCAGGACGAGTT
CACCGTGCAAATGCAAGCGCGTGGGACAAGTTCTGACTGGTGTGGCCGTGGTGTGACCGAAAATAC
CGC

ACGCGTACGCGGCCGCTCGAGCAGAACTCATCTCAGAAGAGGATCTGGCAGCAAATGATATCCTGGATT
ACAAGGATGACGACGATAAGGTTTAA

Protein Sequence:	>RC207833 protein sequence Red=Cloning site Green=Tags(s)
-------------------	--

MLSAQERAQIAQVWDLIAGHEAQFGAELLRLFTVYPSTKVYFPHLSACQDATQLLSHGQRMLAAVGAAV
QHVDNLRAL SPLADLHALVLRVDPANFPLLIQCFHVVLASHLQDEFTVQMQAAWDKFLTGVAVVLTEKY
R

TRTRPLEQKLI SEEDLAANDILDYKDDDDKV

Chromatograms:	https://cdn.origene.com/chromatograms/mk6360_a07.zip
----------------	---



View online »

Restriction Sites: SgfI-MluI

Cloning Scheme:



ACCN: NM_001003938

ORF Size: 423 bp

OTI Disclaimer: The molecular sequence of this clone aligns with the gene accession number as a point of reference only. However, individual transcript sequences of the same gene can differ through naturally occurring variations (e.g. polymorphisms), each with its own valid existence. This clone is substantially in agreement with the reference, but a complete review of all prevailing variants is recommended prior to use. [More info](#)

OTI Annotation: This clone was engineered to express the complete ORF with an expression tag. Expression varies depending on the nature of the gene.

Components: The ORF clone is ion-exchange column purified and shipped in a 2D barcoded Matrix tube containing 10ug of transfection-ready, dried plasmid DNA (reconstitute with 100 ul of water).

Reconstitution Method:

1. Centrifuge at 5,000xg for 5min.
2. Carefully open the tube and add 100ul of sterile water to dissolve the DNA.
3. Close the tube and incubate for 10 minutes at room temperature.
4. Briefly vortex the tube and then do a quick spin (less than 5000xg) to concentrate the liquid at the bottom.
5. Store the suspended plasmid at -20°C. The DNA is stable for at least one year from date of shipping when stored at -20°C.

RefSeq: [NM_001003938.4](#)

RefSeq Size: 524 bp

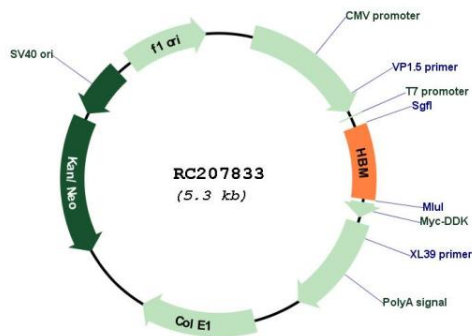
RefSeq ORF: 426 bp

Locus ID: 3042

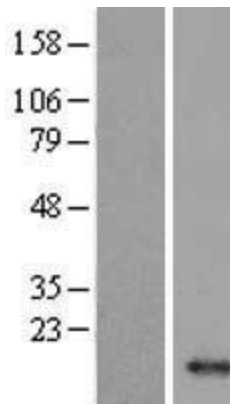
UniProt ID: [Q6B0K9](#)
 Cytogenetics: 16p13.3
 MW: 15.6 kDa

Gene Summary: The human alpha globin gene cluster located on chromosome 16 spans about 30 kb and includes seven loci: 5'- zeta - pseudozeta - mu - pseudoalpha-1 - alpha-2 - alpha-1 - theta - 3'. This gene has an ORF encoding a 141 aa polypeptide which is similar to the delta globins found in reptiles and birds. This locus was originally described as a pseudogene; however, it is currently thought to be a protein-coding gene. [provided by RefSeq, Jul 2008]

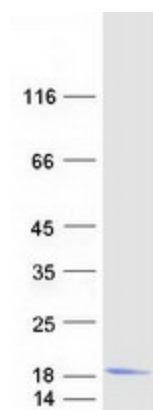
Product images:



Circular map for RC207833



Western blot validation of overexpression lysate (Cat# [LY424039]) using anti-DDK antibody (Cat# [TA50011-100]). Left: Cell lysates from untransfected HEK293T cells; Right: Cell lysates from HEK293T cells transfected with RC207833 using transfection reagent MegaTran 2.0 (Cat# [TT210002]).



Coomassie blue staining of purified HBM protein (Cat# [TP307833]). The protein was produced from HEK293T cells transfected with HBM cDNA clone (Cat# RC207833) using MegaTran 2.0 (Cat# [TT210002]).