

Product datasheet for **RC207832**

DCAF12L1 (NM_178470) Human Tagged ORF Clone

Product data:

Product Type:	Expression Plasmids
Product Name:	DCAF12L1 (NM_178470) Human Tagged ORF Clone
Tag:	Myc-DDK
Symbol:	DCAF12L1
Synonyms:	KIAA1892L; WDR40B
Mammalian Cell Selection:	Neomycin
Vector:	pCMV6-Entry (PS100001)
E. coli Selection:	Kanamycin (25 ug/mL)



[View online »](#)

ORF Nucleotide Sequence:

>RC207832 ORF sequence
 Red=Cloning site Blue=ORF Green=Tags(s)

TTTTGTAATACGACTCACTATAGGGCGGCCGGGAATTCGTCGACTGGATCCGGTACCGAGGAGATCTGCC
 GCC**CGCATCGCC**

ATGGCCCAGCAGCAAACAGGTAGCAGGAAACGGAAAGCGCCCGGGTTCGAGGCGGGCCGAGAGCTCGC
 CGTCGCAGGGCTTGGCGGCAGCGGACGGTGAAGGGCCGCTGCTACTCAAGAGGCAGAGGCGGCCGCGAC
 GTATCGCTCGATGGCGCACTATCTGAAGGTTTCGGGAGGTAGGCGGGTGGGGCCCCGCCAGGCTCCAGGGC
 TTCGATGGCGAGCTGCGGGGCTACGCGGTACAGAGGCTGCCGAGCTGCTGACGGAGCGCCAACGGAGC
 TGGGCACGGTCAACAAGGTGTTTCGCGTACAGTGGCTGAACTCCAGGCAGGTGGTGTGCGGCACCAAGTG
 TAACACGCTTTTCGTGGTGGACGTGGAGTCAGGCCACATCGCGCATCCCTCTTTCGGGACAGTGAG
 GCCAGGCTGGCCAGGACCAACAGGGCTGCGGCATCCATGCCATCGAGCTGAATCCCTCCAAGACGCTTC
 TGGCCACCGCGCGGAAAACCCCAACAGCTGGCCATCTACCAGCTGCCCTCCCTGGATCCCTGTGCCT
 GGGCGACCGCCATGGCCACAAGGACTGGATCTTCGCCGTCGCTGGCTGAGTGACACCGTAGCCGTGAGC
 GGCTCCCGCGACGGCACTGTGGCGCTGTGGCGGATGGACCCGGACAAGTTCGATGACACTGTTGCCCTGGC
 ATAGCGAGGTGGGTCTCCCCGTATATGCCACATCCGTCGAGGGATGTGGAGGCCATCCCCAGGGCCAT
 CATCAACCCAGTAACCGCAAGGTGCGGGCCCTGGCTGCGGCGGCAAGAACCAGGAACTGGGAGCGGTG
 TCCTTGGACGGCTACTTCCACCTGTGAAAGCCGGGAGCGCACTATCCAGGCTGCTGCCATCAGGCTGC
 CCTACTCCGGGATAATGTGTGCCTGACCTACTGTGATGATATGTCTGTGTACGCCGTGGGCTCCCATTC
 CCACGTCTCTTCTGGATCTGCGCCAGGACAGCAGAACATCCGGCCCTGTGTCTCGAGAGGGTGGC
 ACAGGCGTGGGTCGCTGAGCTTCTACCGCCACATCATCTGTGGGCACCGGTGAGGCTCCCTGCTCT
 TCTATGACGTCCGGGCCAGAAATTCCTGGAGGAAAGAGCCTCCGCCACCCTGGAGTCTCTTCGGGACC
 TGCAAGGAGGAAGCTCAGGCTTGCCTGTGGCAGAGGCTGGCTCAACCACAATGATTTCTGGGTGAATTAC
 TTTGGTGGCATGGAAGTGTTCCTCAATGCGCTCTACACCCACTGCTACAACGGCTGAGATGAAGCTCT
 TTGTGGCTGGGGGCTCTCCCTGCAGGCTCCATGGGAATATGCAGGCTCTGGAGC

ACGCGTACGCGGCCGCTCGAGCAGAACTCATCTCAGAAGAGGATCTGGCAGCAAATGATATCCTGGATT
 ACAAGGATGACGACGATAAGGTTTAA

Protein Sequence:

>RC207832 protein sequence
 Red=Cloning site Green=Tags(s)

MAQQQTGSRKRKAPAVEAGAESSPSQGLAADGEGPLLLKRRPATYRSMAYHLKVREVGWGPRLQG
 FDGELRGYAVQRLPELLTERQLELGTVNKVFASQWLNRSQVVCGTKCNTLFVVDVESGHIARIPLLRDSE
 ARLAQDQGGCIHAIELNPSKTLATGGENPNSLAIYQLPSLDPLCLGDRHGHKDWIFAVAWLSDTVAVS
 GSRDGTVALWRMDPKFDDTVAWHSEVGLPVYAHIRPRDVEAIPRAIINPSNRKVRALACGGKNQELGAV
 SLDGYFHLWKAGSALSRLLSIRLPYFRDNVCLTYCDDMSVYAVGSHSHVFLDLRQDQONIRPLCSREGG
 TGVRSLSFYRHIIIVGTGQGSLLFYDVRAQKFLERASATLESSGPARRKRLRLACGRGWLNHDFWVNY
 FGGMEVFPNALYTHCYNWPEMKLFVAGGPLPAGLHGNYAGLWS

TRTRPLEQKLISEEDLAANDILDYKDDDDKV

Chromatograms:

https://cdn.origene.com/chromatograms/mk6338_f10.zip

Restriction Sites:

Sgfl-Mlul

Cloning Scheme:



ACCN: NM_178470

ORF Size: 1389 bp

OTI Disclaimer: The molecular sequence of this clone aligns with the gene accession number as a point of reference only. However, individual transcript sequences of the same gene can differ through naturally occurring variations (e.g. polymorphisms), each with its own valid existence. This clone is substantially in agreement with the reference, but a complete review of all prevailing variants is recommended prior to use. [More info](#)

OTI Annotation: This clone was engineered to express the complete ORF with an expression tag. Expression varies depending on the nature of the gene.

Components: The ORF clone is ion-exchange column purified and shipped in a 2D barcoded Matrix tube containing 10ug of transfection-ready, dried plasmid DNA (reconstitute with 100 ul of water).

Reconstitution Method:

1. Centrifuge at 5,000xg for 5min.
2. Carefully open the tube and add 100ul of sterile water to dissolve the DNA.
3. Close the tube and incubate for 10 minutes at room temperature.
4. Briefly vortex the tube and then do a quick spin (less than 5000xg) to concentrate the liquid at the bottom.
5. Store the suspended plasmid at -20°C. The DNA is stable for at least one year from date of shipping when stored at -20°C.

RefSeq: [NM_178470.2](#)

RefSeq Size: 3403 bp

RefSeq ORF: 1392 bp

Locus ID: 139170

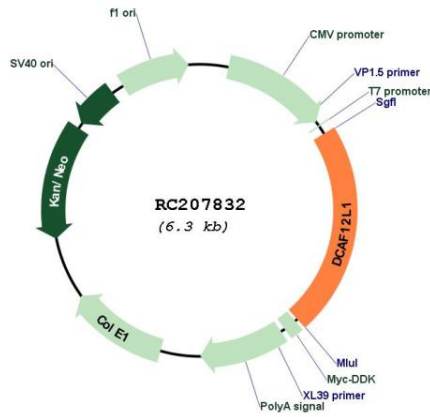
UniProt ID: [Q5VU92](#)

Cytogenetics: Xq25

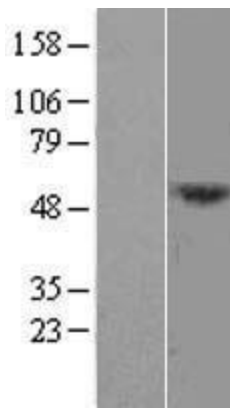
MW: 51.1 kDa

Gene Summary: This gene encodes a member of the WD repeat protein family. WD repeats are minimally conserved regions of approximately 40 amino acids typically bracketed by gly-his and trp-asp (GH-WD), which may facilitate formation of heterotrimeric or multiprotein complexes. Members of this family are involved in a variety of cellular processes, including cell cycle progression, signal transduction, apoptosis, and gene regulation. [provided by RefSeq, Jul 2008]

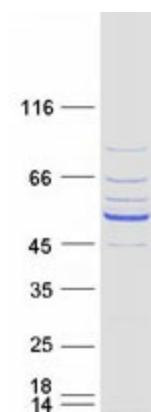
Product images:



Circular map for RC207832



Western blot validation of overexpression lysate (Cat# [LY405936]) using anti-DDK antibody (Cat# [TA50011-100]). Left: Cell lysates from untransfected HEK293T cells; Right: Cell lysates from HEK293T cells transfected with RC207832 using transfection reagent MegaTran 2.0 (Cat# [TT210002]).



Coomassie blue staining of purified DCAF12L1 protein (Cat# [TP307832]). The protein was produced from HEK293T cells transfected with DCAF12L1 cDNA clone (Cat# RC207832) using MegaTran 2.0 (Cat# [TT210002]).