

## Product datasheet for **RC207828**

### **ZZZ3 (NM\_015534) Human Tagged ORF Clone**

#### **Product data:**

Product Type:	Expression Plasmids
Product Name:	ZZZ3 (NM_015534) Human Tagged ORF Clone
Tag:	Myc-DDK
Symbol:	ZZZ3
Synonyms:	ATAC1
Mammalian Cell Selection:	Neomycin
Vector:	pCMV6-Entry (PS100001)
E. coli Selection:	Kanamycin (25 ug/mL)



[View online »](#)

**ORF Nucleotide  
Sequence:**

>RC207828 representing NM\_015534  
 Red=Cloning site Blue=ORF Green=Tags(s)

TTTTGTAATACGACTCACTATAGGGCGGCCGGGAATTCGTCGACTGGATCCGGTACCGAGGAGATCTGCC  
 GCC**GCGATCGCC**

ATGGCTGCTTCCCGATCTACTCGTGTTACAAGATCAACAGTGGGGTTAAACGGCTTGGATGAATCTTTTT  
 GTGGTAGAACTTTAAGGAATCGTAGCATTGCGCATCCTGAAGAAATCTTCTAATTCTCAAGTACGATC  
 AAGATCACCAAAGAAGAGACCAGAGCCTGTGCCAATTCAGAAAAGGAAATAATAATGGGAGAACCACTGAT  
 TAAAAACAGCAGAGTACCCGAGAATCATGGGTAAGCCCTAGGAAAAGAGGACTTTCTTCTCAGAAAAGG  
 ATAACATAGAAAAGGCAGGCTATAGAAAATTGTGAGAGAAGGCAACAGAACCTGTTTCACCAAGTTTTAAA  
 AAGAATTAAGCGTTGTCTTAGATCTGAAGCACCAACAGTTCAGAAGAAGATTCTCTATAAAATCAGAC  
 AAGGAGTCAGTAGAACAGAGGAGTACAGTAGTGGACAATGATGCAGATTTTCAAGGGACTAAACGAGCTT  
 GTCGATGCTTATACTGGATGATTGTGAGAAAAGGAAATTAAGGTGAATGCAGTGAGGAAGGGCC  
 ACTTAATTCTGCAGTAGTTGAAGAAATCACAGGCTATTTGGCTGTCAATGGTGTGATGACAGTGATTCA  
 GCTGTTATAAACTGTGATGACTGTCAGCCTGATGGGAACACTAAACAAAATAGCATTGGTTCCTATGTGT  
 TACAGGAAAAATCAGTAGCTGAAAATGGGGATACGGATACCCAAACTTCAATGTTCTTGATAGTAGGAA  
 GGAGGACAGTTATATAGACCATAAGGTGCCTTGCACAGATTACACAAGTGCAGGTCAAGTTGGAGGACCAC  
 AAAATAGTAACTGCCTGCCTTGCCTGTGGAACATGTTAATCAGTCTGACTACTGAGCCAGCTACAGGGCCCT  
 TTTCTGAAACTCAGTCATCTTTAAGGGATTCTGAGGAGGAAGTAGATGTGGTGGGAGATAGCAGTGCCTC  
 AAAAGAGCAGTGTAAAGAAAACCAATAACGAACTGGACACAAGTCTTGAGAGTATGCCAGCCTCCGGA  
 GAACCTGAACCATCTCCTGTTCTAGACTGTGTTTCAGCTCAAATGATGTCTTTATCAGAACCTCAAGAAC  
 ATCGTTATACTTGAGAACCTCACACGAAGGGCAGCCCTACCAGAGGTAGTCCCACTAAAAACAGTTTC  
 TCCTTACAGAGAAAATGGACAATTTGAGGAGAATAATCTTAGTCCTAATGAAACAAATGCAACTGTTAGT  
 GATAATGTAAGTCAATCTCCTACAAATCCTGGTAAAATTTCTCAAAATGAAAAAGGGATATGTTGTGACT  
 CTCAAAATAATGGAAGTGAAGGAGTAAGTAAACCACCCTCAGAGGCAAGACTCAATATTGGACATTTGCC  
 ATCTGCCAAAGAGAGTGCAGTCAAGCATTACAGAAGAGGAAGATGATGATCCTGATGTTTATTACTTT  
 GAATCAGATCATGTGGCACTGAAACACAACAAGATTATCAGAGACTATTACAGACGATTGCTGTACTCG  
 AGGCTCAGCGTTCTCAAGCAGTCCAAGACCTTGAAGTTTAGGCAGGCACCAGAGAGAAGCACTGAAAAA  
 TCCCATTTGGATTTGTGAAAAAATCCAGAAGAAGGCTGATATTGGGCTTCCATATCCACAGAGAGTTGTT  
 CAATTGCCTGAGATCGTATGGGACCAATATACCCATAGCCTTGGGAATTTTGAAGAGAATTTAAAAATC  
 GTAAAAGACATACTAGAAGAGTTAAGCTAGTTTTTGATAAAGTAGGTTTACCTGCTAGACAAAAAGTCC  
 TTTAGATCCTAAGAAGGATGGAGAGTCCCTTTCATATTCTATGTTGCCTTTGAGTGATGGTCCAGAAGGC  
 TCAAGCAGTCGTCTCAGATGATAAGAGGACGCTTGTGTGATGATACCAACCTGAAACATTTAACCAGT  
 TGTGGACTGTTGAAGAACAGAAAAGCTGGAACAGCTACTCATCAATACCCTCCTGAAGAAGTAGAATC  
 TCGACGCTGGCAGAAGATAGCAGATGAATTTGGCAACAGGACAGCAAAACAGGTTGCCAGCCGAGTACAG  
 AAGTATTTCAAAAGCTAACTAAAGCTGGCATTCCAGTACCAGGCAGAACACCAAACTTATATATACT  
 CCAAAAAGTCTTCAACAAGCAGACGACAGCACCTTAAATAAGCATCTCTTTAAGCCTTCCACTTTCAT  
 GACTTCACATGAACCGCCAGTGTATATGGATGAAGATGATGACCGATCTGTTTTATAGCCACATGAAC  
 ACTGCTGTTGAAGATGCATCAGATGACGAAAGTATTCCTATCATGTATAGGAATTTACCTGAATATAAG  
 AACTATTACAGTTTAAAAAGTTAAAGAAGCAGAACTTCAGCAATGCAAGCTGAAAGTGGATTTGTGCA  
 ACATGTGGGCTTTAAGTGTGATAACTGTGGCATAGAACCATCCAGGGTGTTCGGTGGCATTGCCAGGAT  
 TGTCTCCAGAAATGTCTTTGGATTTCTGTGATTCTTGTTCAGACTGTCTACATGAAACAGATATTCACA  
 AGGAAGATCACCAATTAGAACCTATTTATAGTTCAGAGACATTCTTAGACAGAGACTACTGTGTCTCA  
 GGGCACCAGTTACAATTACCTTGACCCAACTACTTTCCAGCAACAGA

**ACGCGT**ACGCGGCCGCTCGAGCAGAACTCATCTCAGAAGAGGATCTGGCAGCAATGATATCCTGGATT  
 ACAAGGATGACGACGATAAGGTTTAA

**Protein Sequence:** >RC207828 representing NM\_015534  
Red=Cloning site Green=Tags(s)

MAASRSTRVTRSTVGLNGLDEFCGRTLRNRSlAHPEEISSNSQVRSRSPKKRPEPVPIQKGNNGRRTD  
 LKQOSTRESWVSPRKRGLSSSEKDNIERQAIENCERRQTEPVSPVLKRIKRLRSEAPNSSEEDSPIKSD  
 KESVEQRSTVVDNDADFQGTKRACRCLILDDCEKREIKKVNVEEGPLNSAVVEEITGYLAVNGVDDSDS  
 AVINCDDCQPDGNTKQNSIGSYVLQEKSAENGDTDTQTSMFLDSRKEDSYIDHKVPCTDSQVQVKLEDH  
 KIVTACLPEVHVNLTPATGPFSETQSSLRDSEEEVDVVGDSASKEQCKENTNNELDTSLESPASG  
 EPEPSPVLDCVSAQMMSLSEPQEHRYTLRTSPRAAPTRGSPTKNSSPYRENGQFEENLSPNETATVS  
 DNVSQSPNPGEISQNEKGI CCDSQNGSEGVS KPPSEARLNIGHLPSAKE SASQHITEEEDDDPDVYF  
 ESDHVALKHNKDYQRLQLTIAVLEAQRSQAVQDLESLGRHQREALKNPIGFVEKLQKKADIGLPYQRRV  
 QLPEI VWDQYTHSLGNFEREFKNRKRHTRRVKLVFDKVG LPARPKSPLDPKKGESLSYSMLPLSDGPEG  
 SSSRPQMIRGRLCDDTKPETFNQLWTVVEQKLEQLLIKYPPEEVSRRWQKIADELGNRTAKQVASRVQ  
 KYFIKLTAGIPVGRTPNLIIYSKKSSTRRQHPLNKHLFKPSTFMTSHEPPVYMEEDDRSCFHSHMN  
 TAVEDASDDESIPIMYRNLPEYKELLQFKLKKQKLQMQAESGFVQHVGFKCDNCGIEPIQGV RWHCQD  
 CPPEMSLDFCDSCDCLHETDIHKEDHQLPEIYRSETFLDRDYCVSQGTSYNYLDPNYFPANR

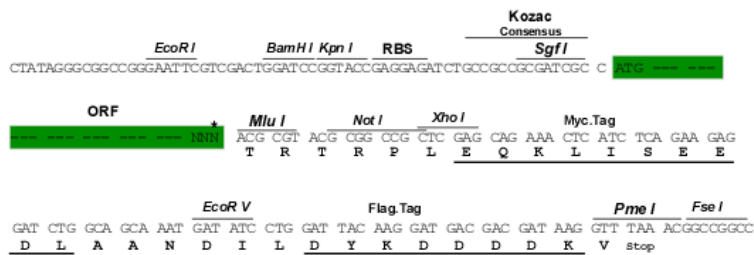
TRTRPLEQKLISEEDLAANDILDYKDDDDKV

**Chromatograms:** [https://cdn.origene.com/chromatograms/mg2919\\_g06.zip](https://cdn.origene.com/chromatograms/mg2919_g06.zip)

**Restriction Sites:** SgfI-MluI

**Cloning Scheme:**

Cloning sites used for ORF Shuttling:

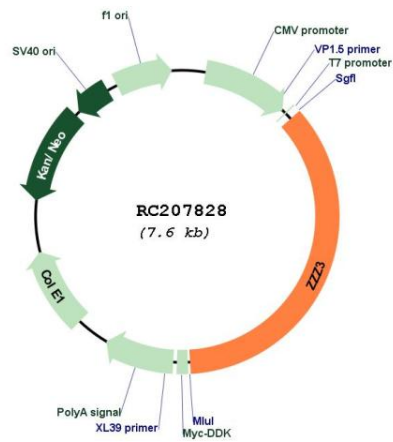


\* The last codon before the Stop codon of the ORF

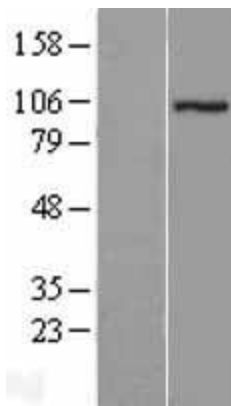
**ACCN:** NM\_015534

<b>ORF Size:</b>	2709 bp
<b>OTI Disclaimer:</b>	The molecular sequence of this clone aligns with the gene accession number as a point of reference only. However, individual transcript sequences of the same gene can differ through naturally occurring variations (e.g. polymorphisms), each with its own valid existence. This clone is substantially in agreement with the reference, but a complete review of all prevailing variants is recommended prior to use. <a href="#">More info</a>
<b>OTI Annotation:</b>	This clone was engineered to express the complete ORF with an expression tag. Expression varies depending on the nature of the gene.
<b>Components:</b>	The ORF clone is ion-exchange column purified and shipped in a 2D barcoded Matrix tube containing 10ug of transfection-ready, dried plasmid DNA (reconstitute with 100 ul of water).
<b>Reconstitution Method:</b>	<ol style="list-style-type: none"><li>1. Centrifuge at 5,000xg for 5min.</li><li>2. Carefully open the tube and add 100ul of sterile water to dissolve the DNA.</li><li>3. Close the tube and incubate for 10 minutes at room temperature.</li><li>4. Briefly vortex the tube and then do a quick spin (less than 5000xg) to concentrate the liquid at the bottom.</li><li>5. Store the suspended plasmid at -20°C. The DNA is stable for at least one year from date of shipping when stored at -20°C.</li></ol>
<b>RefSeq:</b>	<a href="#">NM_015534.6</a>
<b>RefSeq Size:</b>	4347 bp
<b>RefSeq ORF:</b>	2712 bp
<b>Locus ID:</b>	26009
<b>UniProt ID:</b>	<a href="#">Q8IYH5</a>
<b>Cytogenetics:</b>	1p31.1
<b>Protein Families:</b>	Transcription Factors
<b>MW:</b>	101.8 kDa
<b>Gene Summary:</b>	Component of the ATAC complex, a complex with histone acetyltransferase activity on histones H3 and H4.[UniProtKB/Swiss-Prot Function]

Product images:



Circular map for RC207828



Western blot validation of overexpression lysate (Cat# [LY414483]) using anti-DDK antibody (Cat# [TA50011-100]). Left: Cell lysates from untransfected HEK293T cells; Right: Cell lysates from HEK293T cells transfected with RC207828 using transfection reagent MegaTran 2.0 (Cat# [TT210002]).