

Product datasheet for **RC207825**

LNX2 (NM_153371) Human Tagged ORF Clone

Product data:

| | |
|---------------------------|---|
| Product Type: | Expression Plasmids |
| Product Name: | LNX2 (NM_153371) Human Tagged ORF Clone |
| Tag: | Myc-DDK |
| Symbol: | LNX2 |
| Synonyms: | PDZRN1 |
| Mammalian Cell Selection: | Neomycin |
| Vector: | pCMV6-Entry (PS100001) |
| E. coli Selection: | Kanamycin (25 ug/mL) |



[View online »](#)

ORF Nucleotide Sequence:

>RC207825 ORF sequence
 Red=Cloning site Blue=ORF Green=Tags(s)

TTTTGTAATACGACTCACTATAGGGCGGCCGGGAATTCGTCGACTGGATCCGGTACCGAGGAGATCTGCC
 GCC**CGGATCGCC**

ATGGGAACAACAAGTGATGAGATGGTGTCTGTGGAACAGACCTCCTCCTTCTCTAAACCCCTGTGTT
 TTGAATGTGGCCAACAGCACTGGACAAGAGAAAACCATTTGTACAATTACCAGAATGAAGTGGATGATGA
 CCTAGTCTGCCATATTTGCCCTTCAACCTCTGCTGCAGCCACTAGACACACCCTGTGGACATACATTCTGC
 TACAAGTGCCTCAGAACTTTTTACAAGAGAAAGATTTCTGTCCGTTGGACCGGAAAAGACTTCATTTTA
 AGTTGTGCAAGAAGTCTAGTATTCTAGTTCATAAACTCCTAGACAAATTATTAGTTTTATGTCCATTTTC
 TTCAGTGTGCAAGATGTAATGCAACGTTGTGATCTGGAGGCACATCTCAAAAACAGATGTCCTGGAGCT
 TCTCATCGGAGAGTTGCCCTGGAGAGAAGGAAAAGTCTAGTAACTCAAGCAGAGATTGAGAATGAAAATG
 GGCCCACTCTACTAGATCCTGCAGGTACCTTATCTCCAGAAGCAGACTGTTTGGGGACAGGCGCAGTGCC
 TGTGGAGCGGCACTTGACATCAGCGTCTTTCCACATGGAGTGAGGAGCCTGGCCTTGACAACCCCTGCC
 TTTGAGGAGAGCGCTGGAGCTGACACCACACAACGCCACTTAGTTTACCAGAAGGAGAAATCACCACGA
 TTGAAATTCATCGGTCCAATCCTTACATTCAGTTAGGAATCAGCATTGTGGGTGGCAACGAAACACCTTT
 GATTAACATTGTCATCCAGGAGGTCTATCGGGATGGGGTCATTGCCAGAGACGGGAGACTTCTTGCTGGA
 GACCAGATTCTTCAGGTCAACAATAACAATATCAGCAATGTGTCCATAACTATGCCCGAGCTGTCTTT
 CCCAGCCCTGCAACACTGCATCTTACTGTGCTTCGAGAGAGGCGCTTTGGCAACCGAGCACACAACCA
 TTCTGATAGTAACTCTCCACGAGAAGAGATTTTCCAAGTGGCTTTCATAAACGGGACTCTGGTGAACAG
 CTTGGCATTAAATTTGGTGCAGGACAGATGAGCCAGGGGTTTTATTCTTGACCTGTTGGAAGGGGGGT
 TGGCTGCCAGGACCGGAGCTAAGCAGCAATGACCGAGTGCTGGCCATCAATGGGCACGACCTGAAGTA
 TGGAACTCCGGAGCTTGCTGCCAGATTATTCAGGCCAGTGAGAGAGAGTGAATTTAACAATTGCTAGA
 CCAGGGAACCCAGCCTGGTAACACCATTAGAGAAGCAGGAAATCATAGCAGCAGCAGCCAGCACCACA
 CACCACCACCGTATTATAGCAGACCAAGCTCACATAAGGATCTTACTCAGTGTGTACATGCCAAGAAAA
 ACACATTACTGTAAGAAGGAACCACATGAATCCCTTGGCATGACCGTTGCTGGGGCAGGGGAAGTAAG
 AGTGGTGAGCTGCCATCTTTGTGACCAGTGCCACCCCATGGCTGCCTTGACGAGATGGCAGAATAA
 AGAGAGGTGATGTGTGCTAAATATCAACGGCATTGATTTGACCAATTTAAGTACAGTGAGGCAGTTGC
 AATGCTGAAAGCCAGTGCCGCTCCCTGCTGTTGCCCTTAAAGCACTTGAGTCCAGATTGTTGAGGAG
 GCGACTCAGAACCGGAGGAGCAGCCGAGTACTTTCAGCGAAAAATGAGTATGATGCCAGTTGGTCCCAT
 CATGGGTGATGTGGCTTGGGCTTCCAGCACACTTCATAGCTGCCACGATATAGTTTTACGAAGAAGTTA
 CTTGGGAAGTTGGGGCTTTAGTATCGTTGGTGGATATGAAGAGAACCACCAATCAGCCTTTTTTCATT
 AAAACTATTGTCTTGGGAACCTGCTTATTATGATGGAAGATTAAGTGTGGTGACATGATTGTGGCCG
 TAAATGGGCTGTCAACCGTGGGCATGAGCCACTCTGCACTAGTTCCCATGTTGAAGGAGCAGAGGAACAA
 AGTCACTCTGACCGTTATTTGTTGGCCTGGCAGCCTTGTA

ACGCGTACGCGGGCGCTCGAGCAGAACTCATCTCAGAAGAGGATCTGGCAGCAATGATATCCTGGATT
 ACAAGGATGACGACGATAAGGTTTAA

Protein Sequence: >RC207825 protein sequence
Red=Cloning site Green=Tags(s)

MGTTSDEMVSVEQTSSSSLNPLCFECGQQHWHTRENHLYNYQNEVDDDLVCHICLQPLLQPLDTPCGHTFC
 YKCLRNFLQEKDFCPLDRKRLHFKLCKKSSILVHKLLDKLLVLCPFSSVCKDVMQRCDLEAHLKNRCPGA
 SHRRVALERRKTSRTQAEIENENGPTLLDPAGTLSPEADCLGTGAVPVERHLTSASLSTWSEEPGLDNPA
 FEESAGADTTQPLSLPEGEITTIIEIHRSNPYIQLGISIVGGNETPLINIVIQEVYRDGVIARDGRLLAG
 DQILQVNNYNISNVSHNYARAVLSQPCNTLHLTVLRERRFGNRAHNHSDSNSPREEIFQVALHKRDSGEQ
 LGIKLVRRRTDEPGVFILDLEGLLAAQDGRLLSSNDRVLAINGHDLKYGTPELAAQIIQASGERVNLTAR
 PGKQPQNGTIREAGNHSSSSQHHTPPPYSRPSSHKDLTQCVTCQEKHITVKKEPHESLGMTVAGGRGSK
 SGELPIFVTSVPPHGCLARDGRIKRGDVLNNGIDLNLSHSEAVAMLKASAASPAVALKALEVQIVEE
 ATQNAEEQPSTFSENEYDASWSPSWMWLGLPSTLHSCHDIVLRRSYLGSWGFIVGGYEENHTNQPFPI
 KTIIVLGTPAYDGRLLKCGDMIVAVNGLSTVGMSSHALVPMLKEQRNKVTLTVICWPGSLV

TRTRPLEQKLISEEDLAANDILDYKDDDDKV

Chromatograms: https://cdn.origene.com/chromatograms/mk6862_e11.zip

Restriction Sites: SgfI-MluI

Cloning Scheme:



ACCN: NM_153371

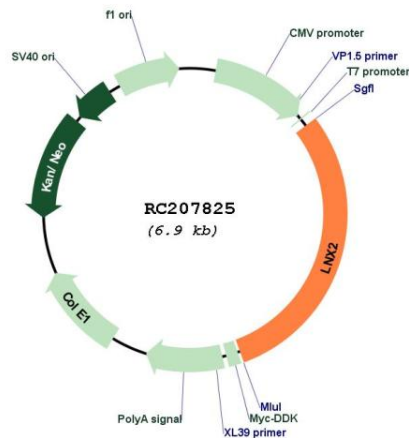
ORF Size: 2070 bp

OTI Disclaimer: The molecular sequence of this clone aligns with the gene accession number as a point of reference only. However, individual transcript sequences of the same gene can differ through naturally occurring variations (e.g. polymorphisms), each with its own valid existence. This clone is substantially in agreement with the reference, but a complete review of all prevailing variants is recommended prior to use. [More info](#)

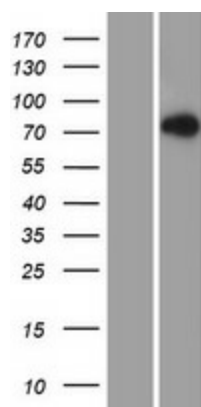
OTI Annotation: This clone was engineered to express the complete ORF with an expression tag. Expression varies depending on the nature of the gene.

| | |
|-------------------------------|---|
| Components: | The ORF clone is ion-exchange column purified and shipped in a 2D barcoded Matrix tube containing 10ug of transfection-ready, dried plasmid DNA (reconstitute with 100 ul of water). |
| Reconstitution Method: | <ol style="list-style-type: none"> 1. Centrifuge at 5,000xg for 5min. 2. Carefully open the tube and add 100ul of sterile water to dissolve the DNA. 3. Close the tube and incubate for 10 minutes at room temperature. 4. Briefly vortex the tube and then do a quick spin (less than 5000xg) to concentrate the liquid at the bottom. 5. Store the suspended plasmid at -20°C. The DNA is stable for at least one year from date of shipping when stored at -20°C. |
| RefSeq: | <u>NM_153371.4</u> |
| RefSeq Size: | 4804 bp |
| RefSeq ORF: | 2073 bp |
| Locus ID: | 222484 |
| UniProt ID: | <u>Q8N448</u> |
| Cytogenetics: | 13q12.2 |
| Domains: | PDZ, RING |
| Protein Families: | Druggable Genome |
| MW: | 76 kDa |

Product images:



Circular map for RC207825



Western blot validation of overexpression lysate (Cat# [LY407083]) using anti-DDK antibody (Cat# [TA50011-100]). Left: Cell lysates from untransfected HEK293T cells; Right: Cell lysates from HEK293T cells transfected with RC207825 using transfection reagent MegaTran 2.0 (Cat# [TT210002]).